

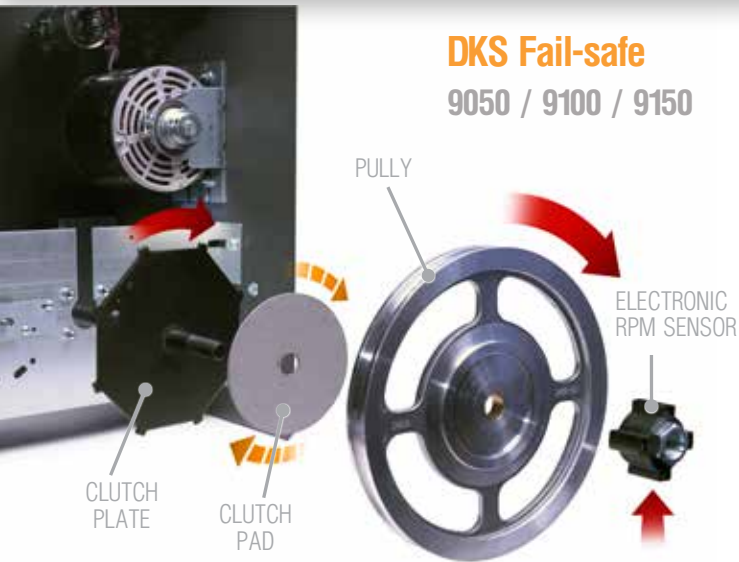
VEHICULAR AC & DC SLIDE GATE OPERATORS



Residential • Apartment/College Residence Halls • Gated Communities
Mixed Use Buildings • Commercial/Industrial • Parking • Self Storage

AC & DC POWERED GATE OPERATORS

A SYSTEM FOR ALL APPLICATIONS



DKS Fail-safe 9050 / 9100 / 9150

1. Gate is obstructed.
2. Pressure builds on drive train.
3. Clutch pad allows pulley to slip, releasing pressure on the gear drive and gate.
4. Electronic RPM sensor activates and reverses gate.

DC Slide Gate Operator Battery Back-up and Solar Power

The DKS 9024 DC Slide Gate Operator is perfect where backup power for a large gate is critical, as they keep running when AC power has been lost. The solar power version is ideal in applications where AC power is unavailable. The powerful 1/2 HP Quadra Drive Motor with a heavy duty full size 30:1 ratio gear moves gates up to 1000 Lb. (453kg).

The small, compact design and is ideally suited for residential or commercial applications.

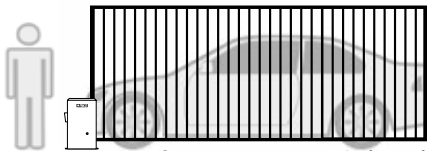


Controls Gates from 16' (4.8m) to 45' (13.7m)

Small Size Gates

Residential

Slide gates up to 16' (4.8m), 500 Lb. (227kg) DKS 9050 slide gate operator.

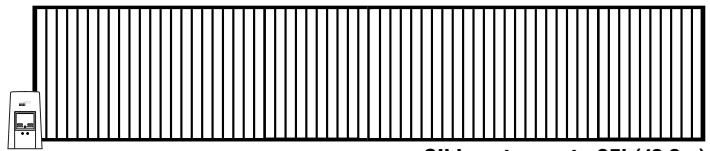


Slide gates up to 16' (4.8m)

Medium Size Gates

Residential, Commercial, Industrial

Slide gates up to 30'-35' (9.1m-10.6m), 1000 Lb. (453kg) DKS 9100, 9150 1/2HP and 9000 1/2 & 1HP, 9024DC up to 40' (12.2m) slide gate operators.

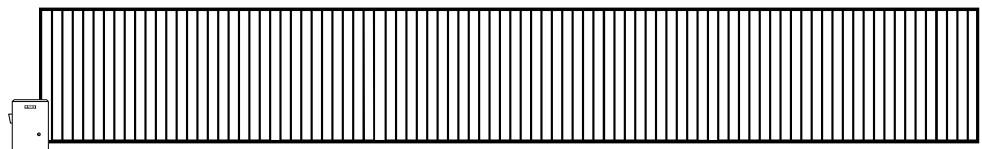


Slide gates up to 35' (10.6m)

Large Size Gates

Commercial and Industrial

Slide gates up to 45' (13.7m), 1500 Lb. (680kg) DKS 9150 1HP slide gate operator.



Slide gates up to 45' (13.7m)

Whole System Emergency Power Backup

The Model 1000 power inverter provides backup power for a complete gated access control system (phone system, controller, accessories, keypads, etc.) when primary AC power fails by converting 12 volt DC power to 120 volt AC power. Maintains a completely operable access control system during power outages and is ideal for any applications with a single gate system.



DKS takes safety a few steps further

All DoorKing slide gate operators are compliant with the U.L. 325 standard for safety. DKS gate operators will provide a safe operating environment when installed correctly with the required entrapment protection devices.



9000 For gates up to 35 ft (10.6m) / 1500 lbs (680kg)

9050 For gates up to 16 ft (4.8m) / 500 lbs (227kg)

**QUIETER
COMPACT
DESIGN**



Model 9000

- Adjustable direct driven limits for precise gate control
- Easy to use manual T-handle release
- Polyethylene cover for durability
- Steel frame for strength and quiet operation
- 1/2 and 1 horsepower models
- Full feature circuit board
- Primary and secondary units for bi-parting (dual) gates

**RESIDENTIAL
BUILT IN
SAFETY
FEATURES**



Model 9050 and Model 9100

- Designed for limited-duty residential applications only (100 maximum cycles per day)
- Built-in mechanical and electronic reverse system
- Electronic magnetic limits eliminate old style mechanical switches that can wear out, break or fail
- Automatic self-setting limits mean no limit switch adjustment – ever

1. DC/Solar 9024

- Operator is 24 Volt DC and includes built-in battery backup
- 115/230 VAC (switch selectable) or 24 VDC Solar Power
- 1/2 HP Quadra Drive Heavy-duty DC motor
- Heavy-duty gearbox
- Solar power ready, with 0.0 Amp SBPD Circuit



2. Safety

- All Models
- Automatically reverses gate when an obstruction condition exists



Key Features

Electrical (all models)

- Auto-close timer
- Selectable loop/reverse input function; stop or reverse
- Built in On / Off and alarm reset switches
- Ports for plug-in open and reverse loop detectors – DKS detectors only
- Convenience outlets for accessory transformers (9024's AC powered model only)

9000/9150

- Input voltage: 115, 208, 230, 460 VAC

9100/9050

- Input voltage: 115 VAC

9024

- 115, 230 VAC or 24 VDC

ADDITIONAL FEATURES

9050/9100/9150

- Fail-Safe release standard
- Optional Fail-Secure release kit
- Automatically assumes fail-safe mode when an entrapment condition exists
- Automatic limit adjustment
- Adjustable partial open (except 9050)
- Anti-tailgating feature (except 9050)

9100 For gates up to 30 ft (9.1m) / 1000 lbs (453kg)

9150 For gates up to 45 ft (13.7m) / 1500 lbs (680kg)

THE SAFEST SELF ADJUSTING GATE OPERATORS



Model 9150

- Built-in mechanical and electronic reverse system
- Electronic magnetic limits eliminate old style mechanical switches that can wear out, break or fail
- Automatic self-setting limits mean no limit switch adjustment – ever
- Designed for continuous-duty applications
- Advanced microprocessor control board features programming switches to set the mode of operation required
- 1/2 or 1 HP continuous-duty motors

9024 For gates up to 40 ft (12.2m) / 1000 lbs (453.6kg)

24 VOLT DC BATTERY BACK-UP & SOLAR



Model 9024

- A DC motor and battery backup for continued gate operation if AC power is lost or for Solar power where no AC is available
- 115/230 VAC Input (switch selectable) or 24 VDC Solar Power Input
- Powerful 1/2 HP Quadra Drive motor for long life, with heavy-duty full size 30:1 ratio gearbox
- Solar power ready
- “T-Handle” release is easily accessible from front of operator

3. Manual Release

9000 / 9024 Models

- Easy to use manual T-handle

9050 / 9100 / 9150 Models

- Fail-safe



4. Convenience Open

9150 Model

- Convenience Open option provides power to open the gate if primary (AC) power fails



9000/9024

- Manual release T-handle is easily accessible from front of operator – re-connects automatically when handle is released
- Direct driven limit nuts for precise gate control
- Adjustable partial open limit
- Anti-tailgating feature
- Standard normally closed stop circuit
- Simple bi-parting gate interface

9024

- Two 7.2 Ah Batteries standard, 18 Ah batteries optional. Required for solar powered operator (2 required)
- Powerful 1/2 HP Quadra Drive motor for long life

9024 (continued)

- Heavy-duty gearbox - 30:1 ratio
- DC Power Shut-Off switch
- Battery protection circuit
- AC Powered Operator Only - 115 VAC Convenience outlets, and AC Power Shut-Off switch
- DC Powered Operator Only - 0.0 Amp SBPD (PatPend) Circuit insures longer battery life
- With battery backup approximately 40 cycles with 7.2 Ah batteries, 150 cycles w/18 Ah batteries. Assumes a 16-ft (4.8m), 1000 Lb (453kg) gate. (Other external factors will affect the performance of the gate operator and may reduce the number of cycles)

Accessories

ENTRAPMENT



5. Steel Built

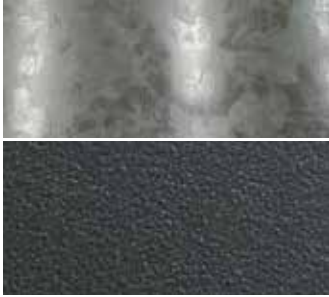
9050 / 9100 / 9150 Models

- G90 galvanized steel frame to prevent rusting

- Steel cover is plated and painted

9000 / 9024 Models

- Steel frame with durable polyethylene cover



6. Gate Tracker™

9000 / 9100 / 9150 / 9024 Models

- Provides operator data to companion access controller (DKS 1833 / 1835 / 1837 / 1838)



| | 9000 | 9024DC | 9050 | 9100 | 9150 |
|--|-----------------|-----------------|----------------|-----------------|-----------------|
| Residential Applications | ✓ | ✓ | ✓ | ✓ | ✓ |
| Commercial/Industrial | ✓ | ✓ | - | ✓ | ✓ |
| Gate Length Maximum: | 35 ft (10.6m) | 40 ft (12.2m) | 16 ft (4.8m) | 30 ft (9.1m) | 45 ft (13.7m) |
| Gate Weight Maximum | 1500 LB (680kg) | 1000 LB (453kg) | 500 LB (227kg) | 1000 LB (453kg) | 1500 LB (680kg) |
| Horse Power | | | | | |
| 1/2 HP | ✓ | ✓ | ✓ | ✓ | ✓ |
| 1 HP | ✓ | - | - | - | ✓ |
| Loop Detector Ports | ✓ | ✓ | ✓ | ✓ | ✓ |
| Gate Tracker | ✓ | ✓ | - | ✓ | ✓ |
| Partial Open and Anti Tail-gating Features | ✓ | ✓ | - | ✓ | ✓ |

| Model | Usage | | | Gate Maximums* | | Electrical | |
|--------|-------|-----|-----|----------------|------------------|------------|------|
| | Res | Com | Ind | Length | Weight | 1/2 HP | 1 HP |
| 9000 | ✓ | ✓ | ✓ | 35 Ft. (10.6m) | 1000 Lb. (453kg) | ✓ | |
| 9000 | ✓ | ✓ | ✓ | 35 Ft. (10.6m) | 1500 Lb. (680kg) | | ✓ |
| 9024DC | ✓ | ✓ | | 40 Ft. (12.2m) | 1000 Lb. (453kg) | ✓ | |
| 9050 | ✓ | | | 16 Ft. (4.8m) | 500 Lb. (227kg) | ✓ | |
| 9100 | ✓ | ✓ | | 30 Ft. (9.1m) | 1000 Lb. (453kg) | ✓ | |
| 9150 | ✓ | ✓ | ✓ | 30 Ft. (9.1m) | 1000 Lb. (453kg) | ✓ | |
| 9150 | | ✓ | ✓ | 45 Ft. (13.7m) | 1500 Lb. (680kg) | | ✓ |

* Assumes gate to be in good condition and sliding on a level surface.

PREVENTION DEVICES

Photo-eyes

- Photo-reflective beams have a scan distance up to 45 ft. (14m)
- Includes reflector and mounting bracket
- Thru-beam photocells have a scan distance up to 100 ft. (30.48m)
- Separate sender and receiver
- Hooded metal enclosure
- Infrared beam



Reversing edges

- A variety of edge styles for different gates
- Mounting channels included
- 2-wire edges can be hard wired

Loop Detectors



Plug-in detectors (DKS only) and hard wired detectors. Single and dual channel. Pre-fabricated loops available or form your own loops.

Control Stations

Gate control stations provide complete manual control. Both indoor and outdoor control stations available.

