



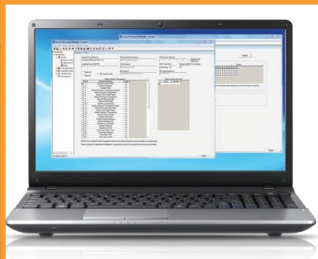
# 9590/9595 MAXIMUM SECURITY SLIDE GATE OPERATOR



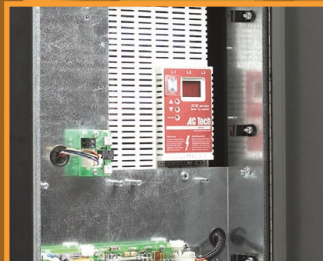
## THE WORK HORSE OF MAXIMUM SECURITY

- User adjustable variable speed control
- Slow-start / slow-stop operation
- High tensile strength roller chain provides a direct mechanical linkage to the gate, will not slip and is unaffected by weather or other contaminants such as dirt, oil, grease, ice, etc.
- Integral internal direct driven limit switch system cannot be tampered with externally
- 5-year limited warranty

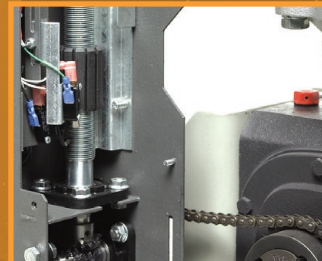
## MAXIMUM SECURITY



**Gate Tracker™**  
reporting output



**Solid-State**  
variable speed control



**Direct Drive**  
limit switches

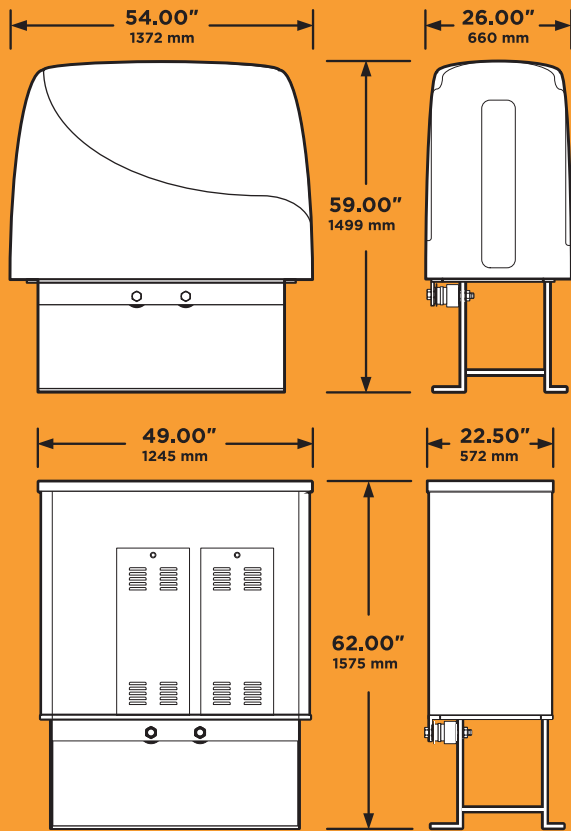


**Large Gates**  
up to 28,000 pounds

**ACCESS CONTROL SOLUTIONS**



# 9590/9595 MAXIMUM SECURITY SLIDE GATE OPERATORS



	9590	9595
CHAIN	#100	#100
SPEED VARIABLE	1-2 Ft/sec .3-.6m/sec	1-2 Ft/sec .3-.6m/sec
MAXIMUM GATE WEIGHT	28,000 Lbs 12,700 Kg	28,000 Lbs 12,700 Kg
MAXIMUM GATE LENGTH	160 Ft 48m	160 Ft 48m
MINIMUM GATE LENGTH	25 Ft 7.6m	25 Ft 7.6m
CLASS OF OPERATION	III, IV	III, IV
VOLTAGE VAC	208, 230, 460	208, 230, 460
HP	10	10
GEARBOX RATIO*	30:1	10:1
MAGNETIC BRAKE	Option	Included
POWER OUTLETS 115 VAC	2	2
LOOP PORTS	2	2

\* Operators with 30:1 gearbox are fail-secure and require mechanical disconnect to move gate. Operators with 10:1 gearbox can be back driven with mechanical assistance once power is removed.

## TECHNICAL FEATURES

### MECHANICAL

- 3/8" Steel frame
- Lightweight 1/4" (6.25mm) polyethylene molded cover
- Primary Reduction is provided by a 30:1 or 10:1 heavy-duty gear reducer running in a continuous oil bath.
- Chain: includes 20' of #100 Roller chain

### GATE TRACKER™

Reporting output provides operator data to a DKS 1833, 1835, 1837 or 1838 access control system (requires 2358 expansion board)

### OPTIONS

- Heavy-duty 10 ga steel housing
- Chain tray kit (p/n 2601-270) is available in 10-ft lengths and is recommended on gates exceeding 20-ft in length
- Red/Green traffic signal provides a visual indication when it is OK for traffic to proceed

### ELECTRICAL

- Adjustable speed control circuit: 1-2 ft/sec
- Slow start / slow stop
- Adjustable partial open
- Anti-tailgating
- Selectable stop / reverse loop function
- Direct driven limit switches
- Built-in power switch
- Built-in 3-button control (open-close-stop)
- Warn-before-operate function
- Built-in diagnostics check for specific fault conditions
- Port for plug-in loop detectors (DKS Detectors only)
- Two 115 VAC Convenience outlets

### MISCELLANEOUS

- Environmental: 10°F to 140°F (-12°C to 62°C)
- Thermostatically controlled heater kit recommended for colder environments
- Shipping weight approximately 700-1200 Lbs (317-544 kg) Depending on model and options selected

### SAFETY

This vehicular slide gate operator is designed for Class III and IV applications only and should never be used in applications serving the general public such as apartment complexes, gated communities, residential applications, parking garages, etc.

Operator requires Type B1 and/or Type B2 entrapment protection in each direction of travel, otherwise the operator will not run.



## DoorKing® Inc.

Access Control Solutions since 1948



120 S. Glasgow Avenue,  
Inglewood, California 90301 U.S.A.  
Tel: 310-645-0023 FAX: 310-641-1586  
www.doorking.com

© 2021 All Rights Reserved.  
Product specifications may  
change without notice. Rev. 3/21



### MEMBER:



### DISTRIBUTED BY:

