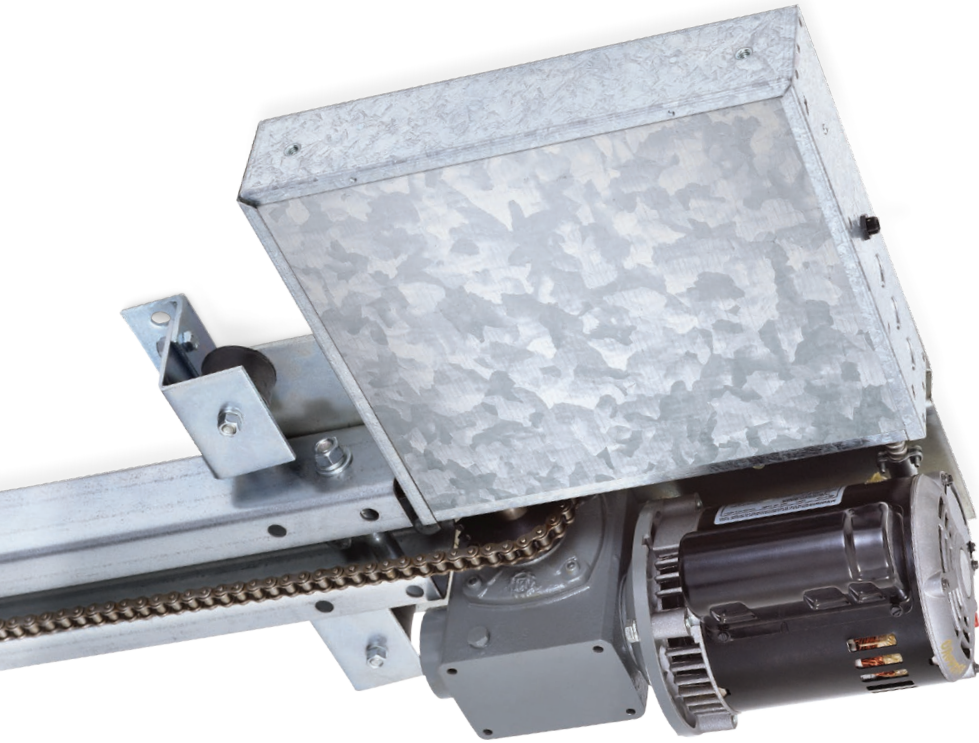




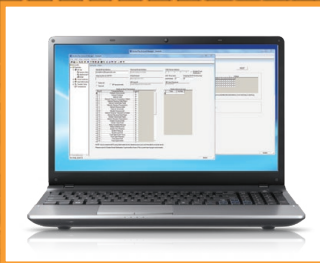
# 1175 VEHICULAR OVERHEAD AC OPERATOR



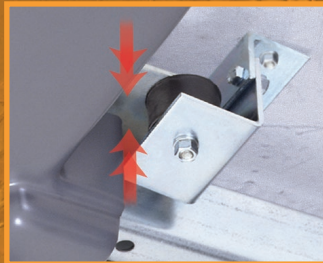
## INDUSTRIAL STRENGTH PARKING STRUCTURE LOW PROFILE

- Advanced Microprocessor Control Board with built-in operator diagnostics
- Plug-in Loop Detectors simplify wiring and make installation easy
- Low profile for underground parking applications
- Keyed Manual Release
- 5-Year Limited Warranty

PARKING • GATED COMMUNITIES • APARTMENT  
COMPLEXES • COMMERCIAL • INDUSTRIAL



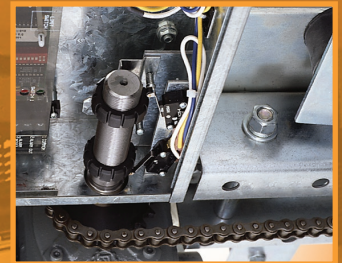
**Gate Tracker™**  
reporting output



**Shock Mounts**  
greatly reduce noise and vibration



**Polyethylene Cover**  
option available

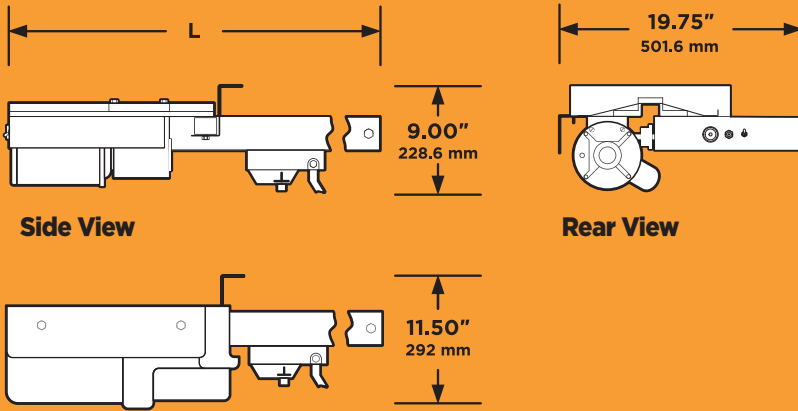


**Direct Drive Limit  
Switches**  
easily adjustable and don't need to be  
reset after power outage

ACCESS CONTROL SOLUTIONS



# 1175 VEHICULAR OVERHEAD AC OPERATOR



## Optional Cover

For 8' (2.44m) high gate L = 12.25' (3.73m)  
 For 10' (3.05m) high gate L = 14.25' (4.34m)  
 For 12' (3.66m) high gate L = 16.25' (4.95m)  
 For 14' (4.27m) high gate L = 18.25' (5.56m)

## 1175

<b>MAXIMUM GATE HEIGHT</b>	8 ft 2.43 m	10 ft 3.05 m	12 ft 3.66 m	14 ft 4.27 m
<b>OVERALL LENGTH</b>	12.25 ft 3.73 m	14.25 ft 4.34 m	16.25 ft 4.95 m	18.25 ft 5.56 m
<b>MOUNT OPTIONS<sup>1</sup></b>	Ceiling			
<b>CLASS OF OPERATION<sup>2</sup></b>	II, III, IV			
<b>VOLTAGE</b>	115 VAC			
<b>HP</b>	1/2			
<b>POWER OUTLETS</b>	N/A			
<b>MAXIMUM CYCLES / DAY</b>	Continuous			
<b>LOOP PORTS<sup>3</sup></b>	2			
<b>ADJUSTABLE CLUTCH<sup>4</sup></b>	No			

- If the operator is mounted less than 8 feet above the ground, the optional powerhead cover (1175-020) is required.
- II = Commercial; III = Limited Access; IV = Restricted Access.
- Plug-in loop detector ports; open and reverse. DoorKing plug-in loop detectors only.
- Operator is equipped with a Type A inherent detection system.

## TECHNICAL FEATURES

### MECHANICAL

- 40:1 Gear Reduction running in a continuous oil bath
- #40 chain
- Gate speed approximately 10 in/sec (254 mm/sec)
- 3 inch (76.2mm) rails
- G90 Galvanized Steel frame to prevent rusting
- Fail-Secure, keyed quick release for manual gate operation in the event of a power outage
- Shock Mounts

### GATE TRACKER™

Reporting output provides operator data to a DKS 1833, 1835, 1837 or 1838 access control system (requires 2358 expansion board)

### OPTIONS

- Rail assembly for 8 ft (2.43m) high gate
- Rail assembly for 10 ft (3.05m) high gate
- Rail assembly for 12 ft (3.66m) high gate
- Rail assembly for 14 ft (4.27m) high gate
- Polyethylene Powerhead Cover (required if powerhead assembly is mounted less than 8 ft (2.43 m) above the ground)

### ELECTRICAL

- Programming Switches
- Built-in Power On / Off Switch
- Direct Driven Limit Nuts for precise gate control
- Auto-Close timer 1-23 sec
- Ports for plug-in Open and Reverse Loop Detectors (DKS Detectors only)

### MISCELLANEOUS

- Environmental: 10°F to 140°F (-12°C to 62°C)
- Thermostatically Controlled Heater Kit recommended for colder environments.
- Shipping weight approximately 175-225 lb (79-102 kg) depending on model and options selected.
- Operator requires Type B1 or Type B2 entrapment protection devices with 10K resistive termination, otherwise the operator will not function.



## DoorKing® Inc.

Access Control Solutions since 1948



120 S. Glasgow Avenue,  
 Inglewood, California 90301 U.S.A.  
 Tel: 310-645-0023 FAX: 310-641-1586  
 www.doorking.com

© 2021 All Rights Reserved.  
 Product specifications may change without notice. Rev. 3/21



### MEMBER:



### DISTRIBUTED BY:

