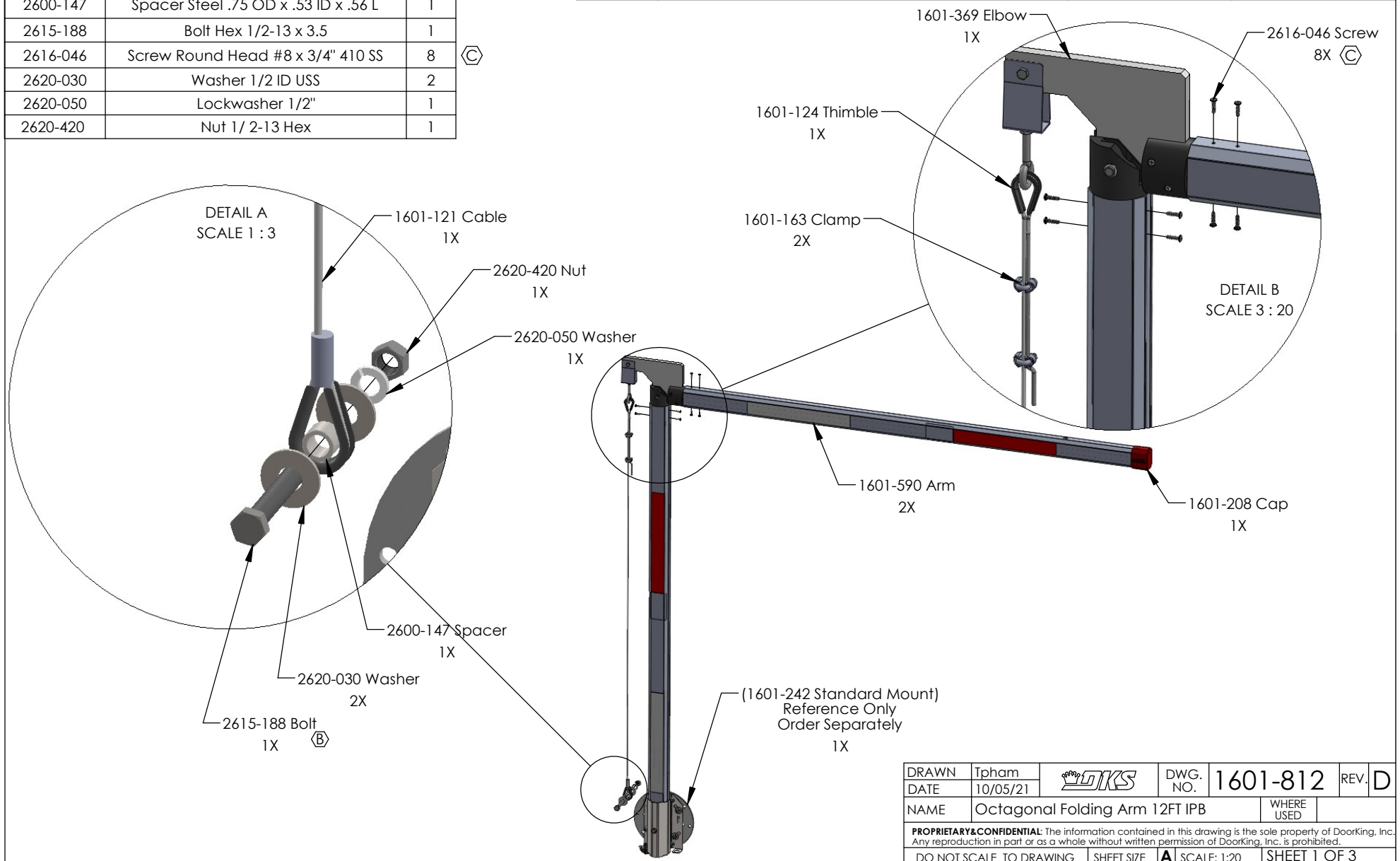


PartNo	Description	QTY.
1601-121	Cable Steel 70.5 Length	1
1601-124	Thimble Eye Bare End	1
1601-163	Cable Clamp 1/8 Dia Rope	2
1601-208	Cap Octagonal Spring Lock	1
1601-369	Elbow Octagon Assembly	1
1601-590	Octagonal Folding Arm 6FT Assy	2
2600-147	Spacer Steel .75 OD x .53 ID x .56 L	1
2615-188	Bolt Hex 1/2-13 x 3.5	1
2616-046	Screw Round Head #8 x 3/4" 410 SS	8
2620-030	Washer 1/2 ID USS	2
2620-050	Lockwasher 1/2"	1
2620-420	Nut 1/ 2-13 Hex	1

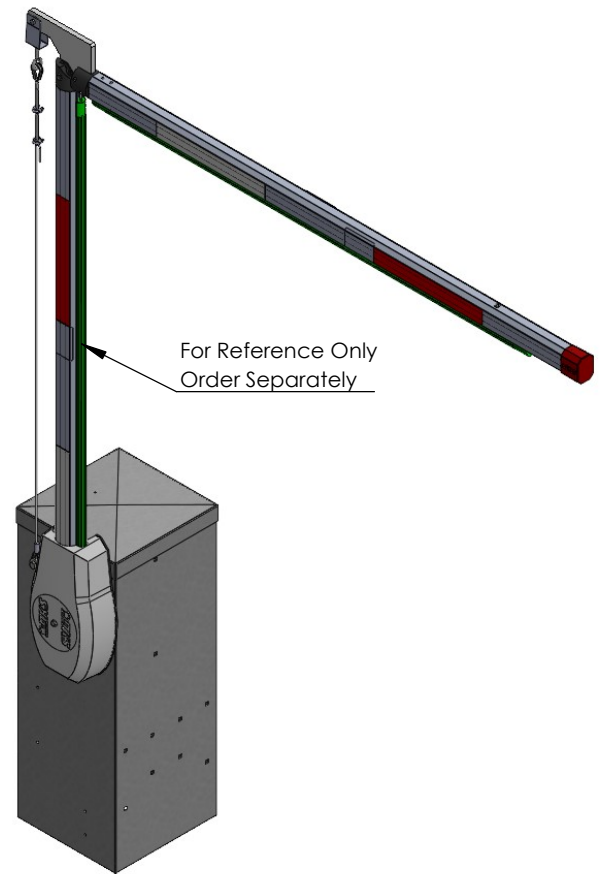
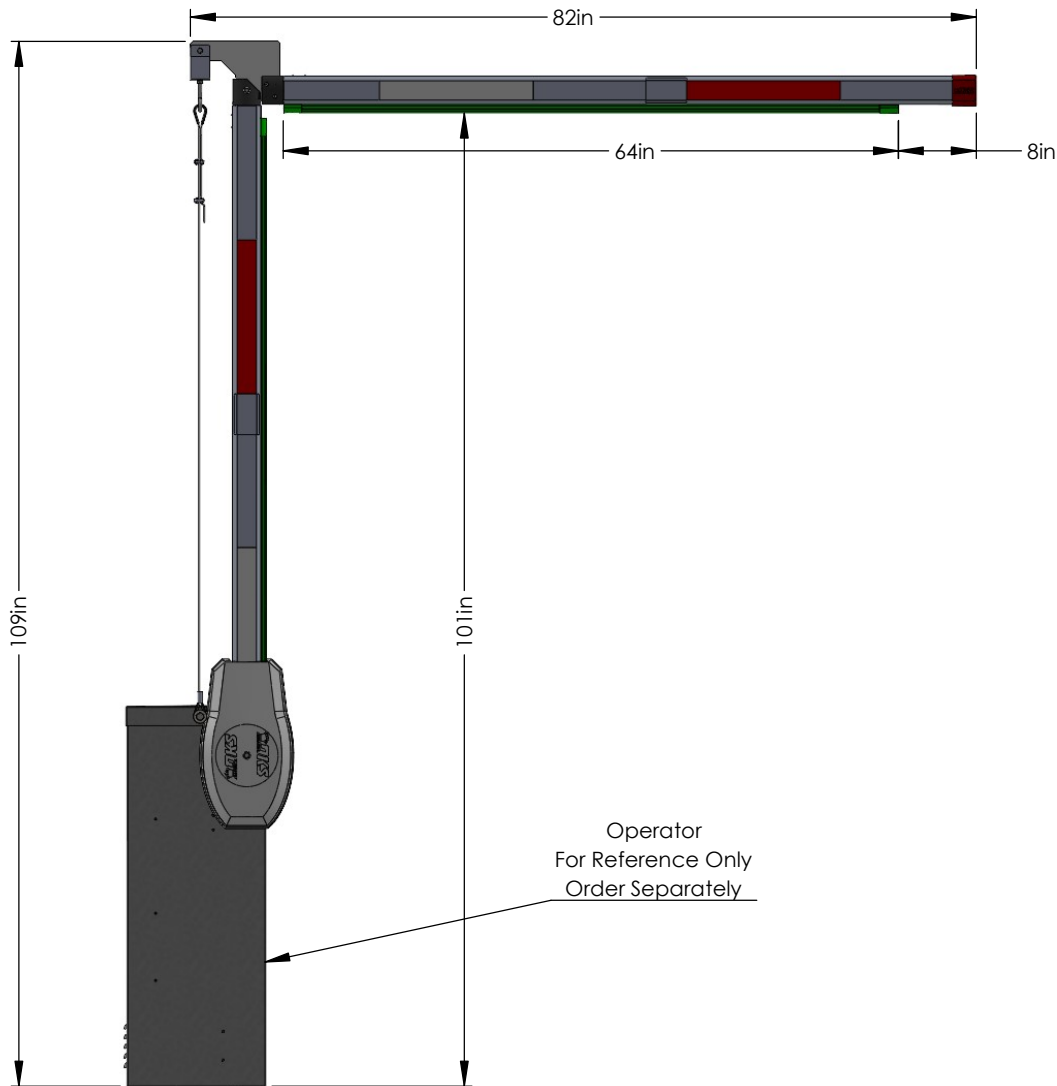
REVISIONS			
REV.	DESCRIPTION	DATE	APPROVED
A	New Part Number	9/28/2021	Tpham
B	2615-188 Bolt 3.5" Replaced 2615-181 1.5" Bolt	2/10/2022	Tpham
C	2616-046 Screw 8X was 2616-045 Screw 8X	4/12/2023	Tpham
D	Sheet 2: 1601-235 Edge Hardwares Kit was 1601-242 Hardware Only Kit; Remove Harness and other accessories from 1601-822 Edge Kit (Duplication)	10/27/2023	Tpham



DRAWN	Tpham		DWG. NO.	1601-812	REV.	D
DATE	10/05/21		WHERE USED			
NAME	Octagonal Folding Arm 12FT IPB					
PROPRIETARY & CONFIDENTIAL: The information contained in this drawing is the sole property of Doorking, Inc. Any reproduction in part or as a whole without written permission of Doorking, Inc. is prohibited.						
DO NOT SCALE TO DRAWING		SHEET SIZE	A	SCALE: 1:20	SHEET 1 OF 3	

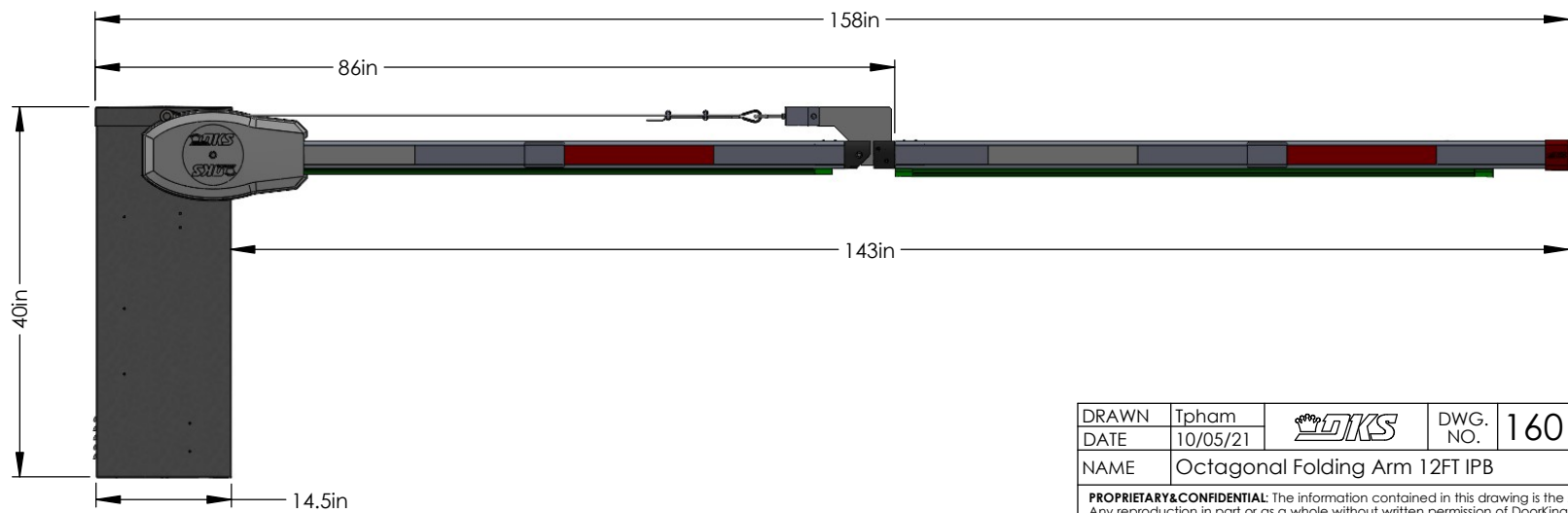
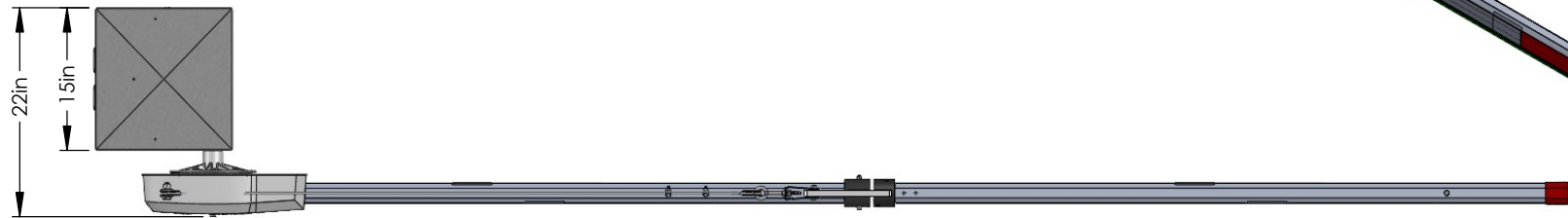
OCTAGONAL FOLDING ARM 12FT OPTIONS

	Arm Kit	Mounting Hardware Kit	Edge Kit
A. Standard Folding Arm 12FT	1601-812 Arm 12FT	1601-242 Standard Mount Hardware	
B. Folding Arm 12FT + LED Reverse Edge	1601-812 Arm 12FT	1601-235 Reverse Edge Hardware	1601-822 Edge LEDs Kit (Includes: 2 Edges+ Adapter Cables)



DRAWN	Tpham		DWG. NO.	1601-812	REV.	D
DATE	10/05/21		NAME	Octagonal Folding Arm 12FT IPB	WHERE USED	
PROPRIETARY & CONFIDENTIAL: The information contained in this drawing is the sole property of DoorKing, Inc. Any reproduction in part or as a whole without written permission of DoorKing, Inc. is prohibited.						
DO NOT SCALE TO DRAWING		SHEET SIZE	A	SCALE: 1:20	SHEET 2 OF 3	

Operator
For Reference Only
Order Separately



DRAWN	Tpham		DWG. NO.	1601-812	REV.	D
DATE	10/05/21		NAME	Octagonal Folding Arm 12FT IPB	WHERE USED	
<p>PROPRIETARY & CONFIDENTIAL: The information contained in this drawing is the sole property of DoorKing, Inc. Any reproduction in part or as a whole without written permission of DoorKing, Inc. is prohibited.</p>						
DO NOT SCALE TO DRAWING		SHEET SIZE	A	SCALE: 1:20	SHEET 3 OF 3	