

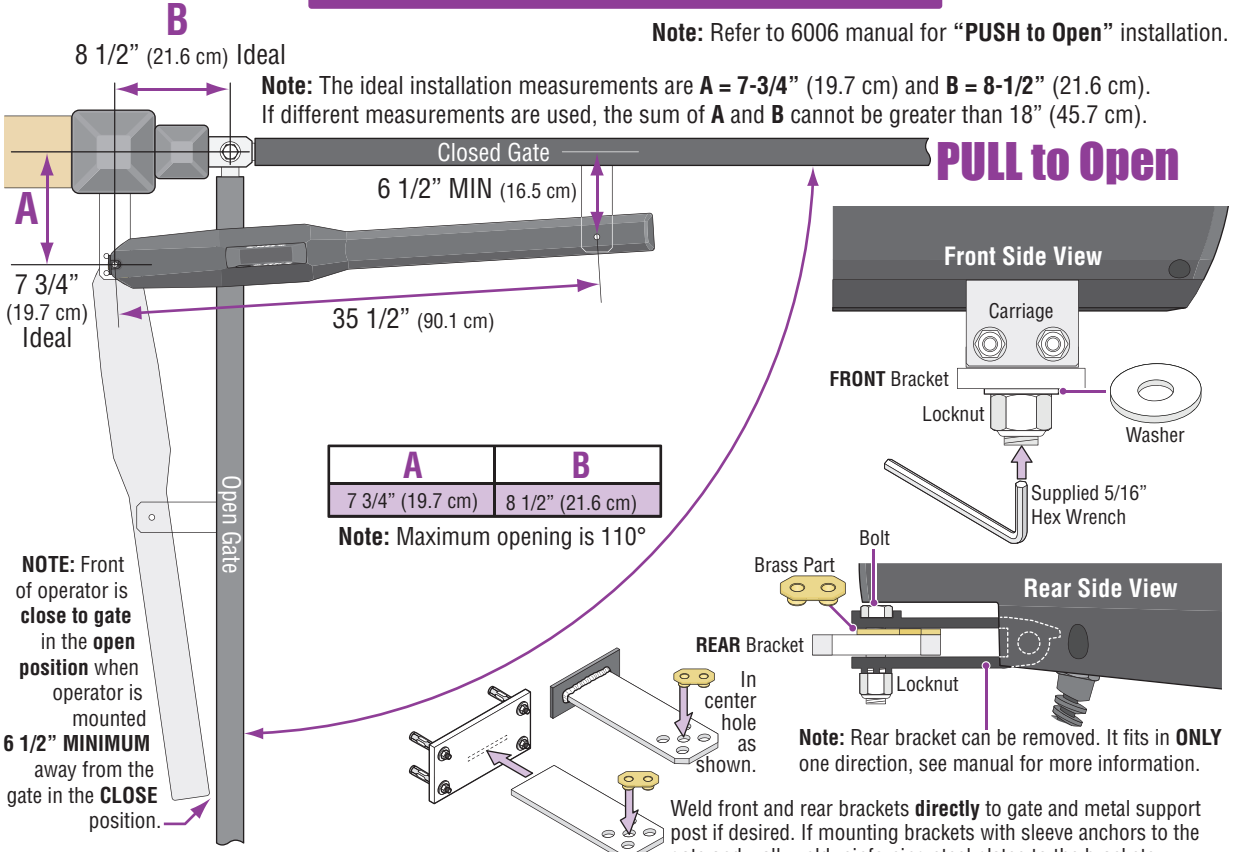
QUICKSTART "BASIC" GUIDELINES FOR MODEL 6006 - FOR A GATE UP TO 18 FEET, 600LBS AND "PULL TO OPEN"

UL 325 August
2018 Standard



120 S. Glasgow Avenue
Inglewood, California 90301
U.S.A.

"PULL to Open" Installation



Opening Direction DIP-Switch 1 (SW 1)

The operator **MUST OPEN GATE** upon initial power up and OPEN command. **PUSH to Open** - Refer to 6006 manual

If the operator closes gate after giving open command, shut off power and reverse this switch setting otherwise operator will **NOT** function correctly.

Control Box

Securely mount a control box near the actuator arm with appropriate hardware not supplied).

Coaxial Cable Antenna Kit
P/N 1514-073 (Sold separately)

115 VAC
or Solar
Power
Input

Bracket
Offset
2 1/4"
(5.7 cm)

Actuator
Cable

Loops Conduit

Power Conduit

Top

Middle

Bottom

Actuator arm and brackets **MUST** be level!

A support bar must
be installed the
entire length of the
gate to support the
pickets.

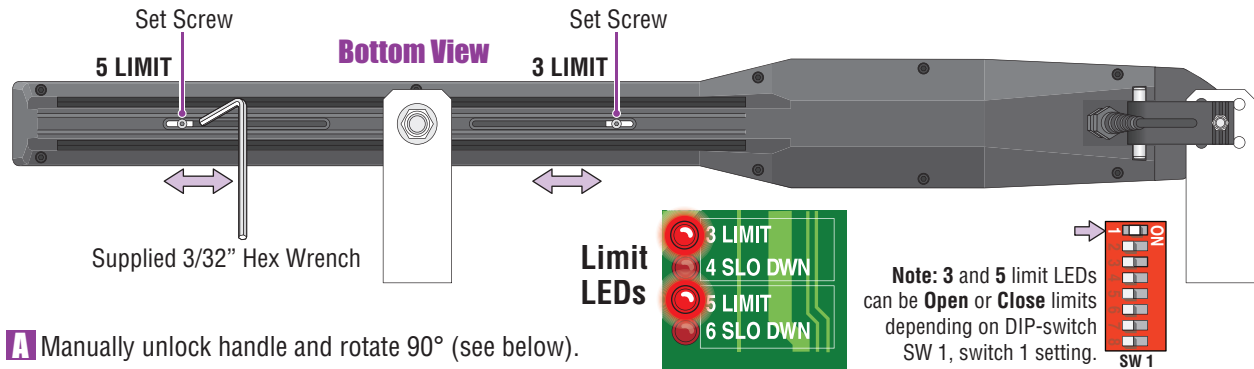
The 6006 is intended for installation only on swing gates used for vehicles.

Pedestrians must be supplied with a separate access opening. For safety and installation instructions, please refer to 6006 Actuator Arm and Control Box Mounting manual, 115 VAC or Solar Control Box Wiring/Owner's manuals.

Limit Sensors Adjustment

Operator Opens to the Inside

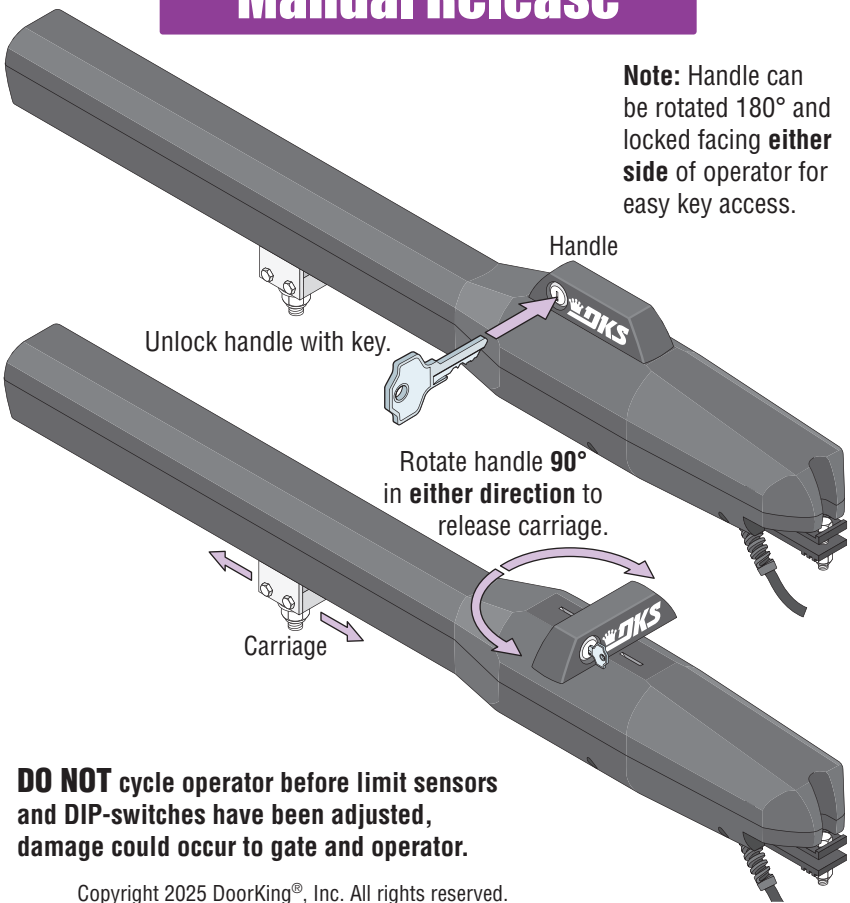
Power to the circuit board must be ON when adjusting the limit sensors.



A Manually unlock handle and rotate 90° (see below).

B Manually move the gate to the desired open or closed position. Loosen set screw and slowly slide the limit assembly. **SLOW DOWN** LED will light first, continue sliding until the corresponding **LIMIT LED** on the circuit board lights up. Tighten screw. Manually move the gate to other position. Repeat process with the other limit assembly.

Manual Release



Copyright 2025 DoorKing®, Inc. All rights reserved.

Wiring to Circuit Board

Note: If factory wired jumpers are on operator terminal, they **MUST** be removed.

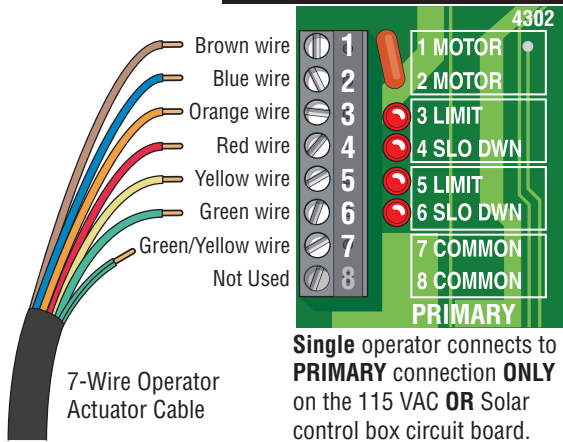
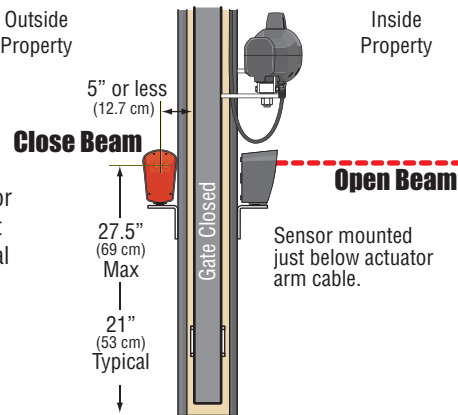
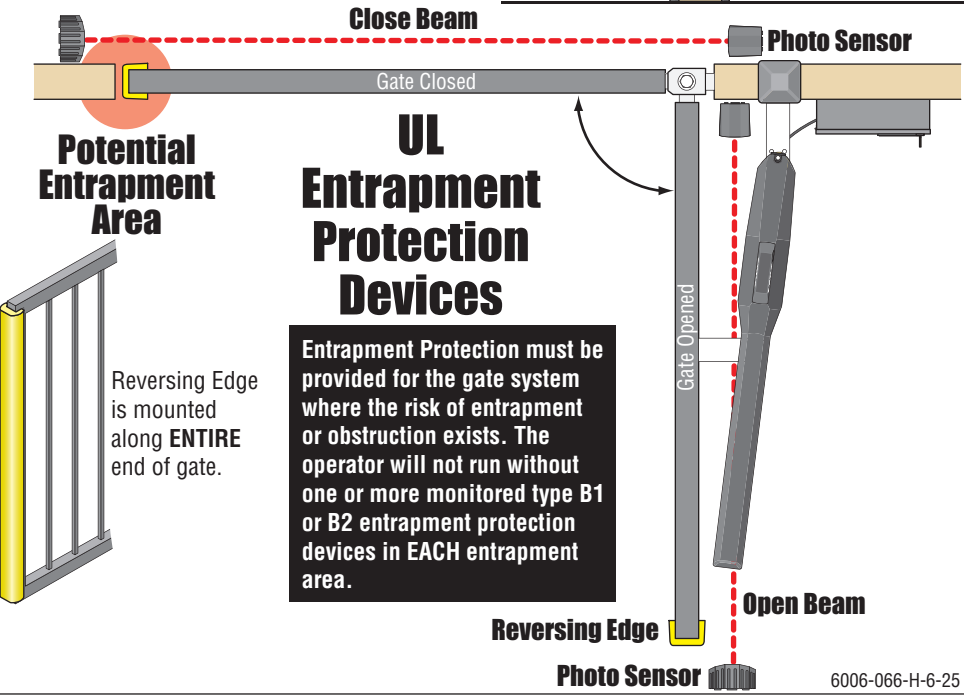


Photo Sensors Height



Note: Only 1 monitored Device can be connected for each cycling direction. An **OPTIONAL** Expansion Kit (sold separately) will allow connection for additional devices. Refer to **YOUR** chosen 115 VAC **OR** Solar powered control box manuals to wire entrapment protection devices.



6006-066-H-6-25