

STANDARD OCTAGON / ROUND ARM KITS

DoorKing Part Numbers:

8080-235

Octagon Arm **WITH**
Reverse Edge Hardware Kit

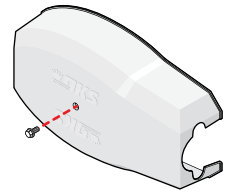
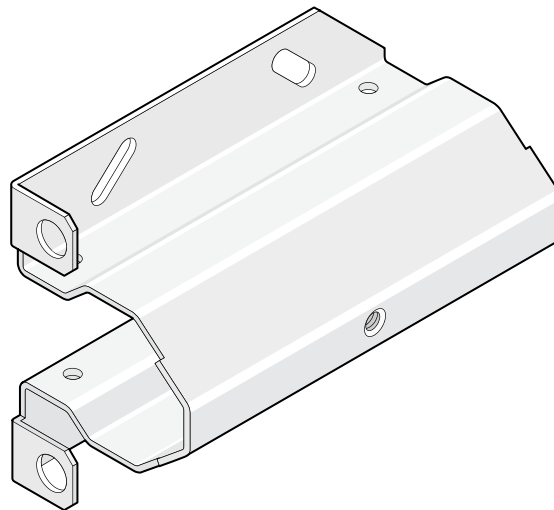
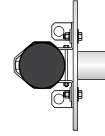
1601-242

Octagon/Round Arm **WITHOUT**
Reverse Edge Hardware Kit

These kits are designed for **ALL OCTAGON** arm 1600 barrier gate operators. A **reversing edge** with **OR** without Red/Green LEDs for the **OCTAGON** arm is sold separately and is **HIGHLY** recommended for safety.

The **ROUND** arm can be used on a 1601 or a 1603 auto-spikes **ONLY**. It **CANNOT** be used on a 1602, 1620 lane barrier or a 1625 wedge barrier. See your chosen operator's Installation/Owners manual for **ROUND** arm **safety protection device** information.

14 ft ROUND Arm (1601 or 1603 ONLY)



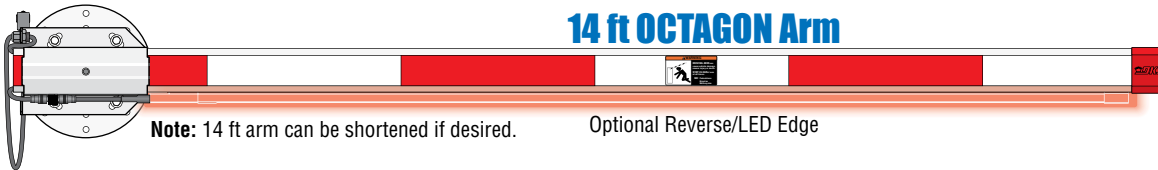
Plastic arm cover with securing bolt included.

17 ft OCTAGON Arm (1602 ONLY)



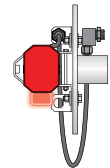
Optional 15 Ft Reverse/LED Edge

14 ft OCTAGON Arm



Note: 14 ft arm can be shortened if desired.

Optional Reverse/LED Edge



120 S. Glasgow Avenue
Inglewood, California 90301 U.S.A.

Copyright 2026 DoorKing®, Inc. All rights reserved.

2 Install Octagon or Round Arm with STANDARD Bracket on Hub

DoorKing Part Numbers:

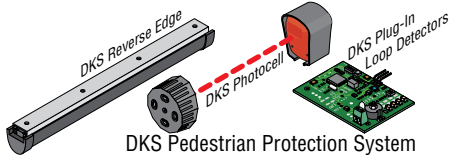
8080-235

Hardware Kit for Octagon Arm
WITH Reverse Edge

1601-242

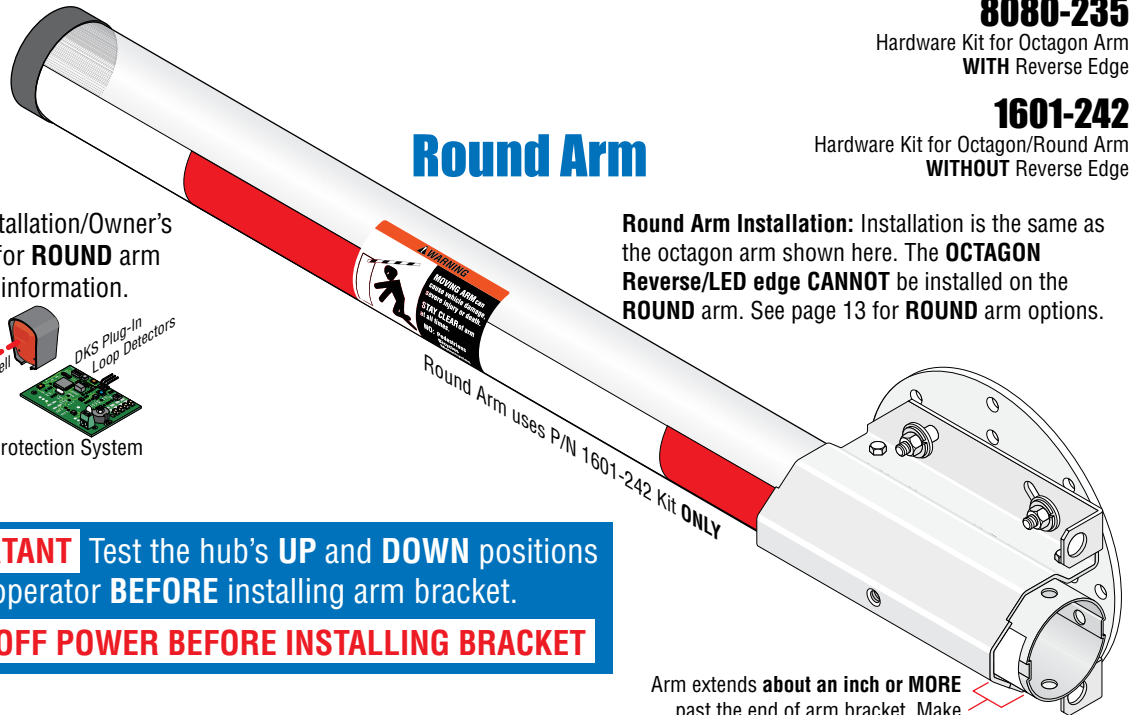
Hardware Kit for Octagon/Round Arm
WITHOUT Reverse Edge

Note: See 1601/1602 Installation/Owner's manual (1601-065 PDF) for **ROUND** arm safety protection device information.



Round Arm

Round Arm Installation: Installation is the same as the octagon arm shown here. The **OCTAGON Reverse/LED edge CANNOT** be installed on the **ROUND** arm. See page 13 for **ROUND** arm options.



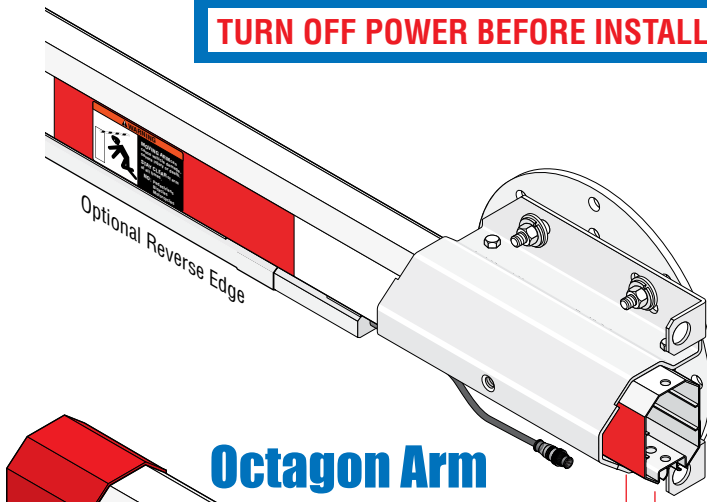
IMPORTANT Test the hub's **UP** and **DOWN** positions on the operator **BEFORE** installing arm bracket.

TURN OFF POWER BEFORE INSTALLING BRACKET

Arm extends **about an inch or MORE** past the end of arm bracket. Make sure plastic arm cover fits over arm.

ROUND Arm Options:

- 14 Ft 1-piece arm
 - 14 Ft 2-piece arm
- See page 13



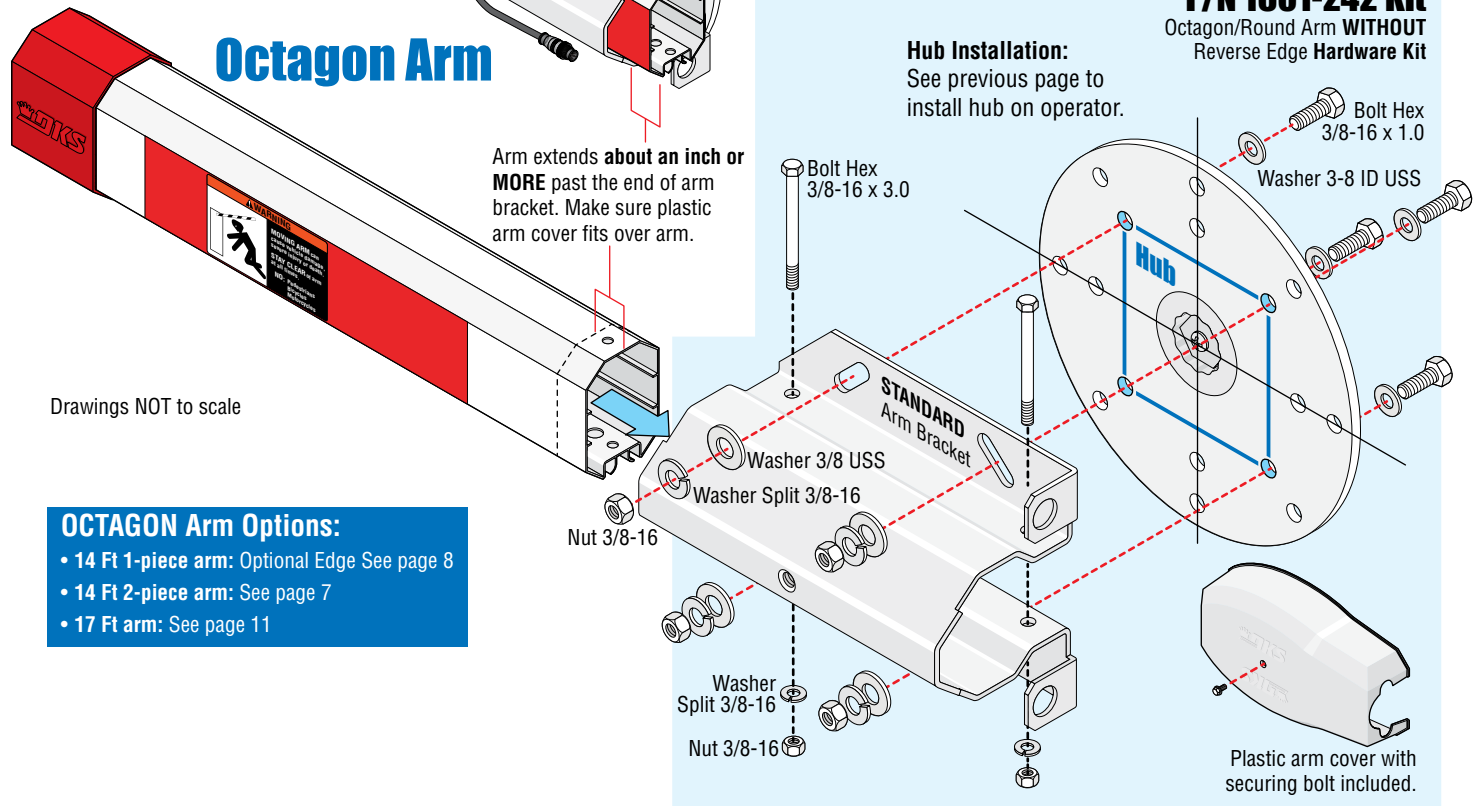
Octagon Arm

Arm extends **about an inch or MORE** past the end of arm bracket. Make sure plastic arm cover fits over arm.

P/N 1601-242 Kit

Octagon/Round Arm **WITHOUT** Reverse Edge Hardware Kit

Hub Installation:
See previous page to install hub on operator.



Plastic arm cover with securing bolt included.

OCTAGON Arm Options:

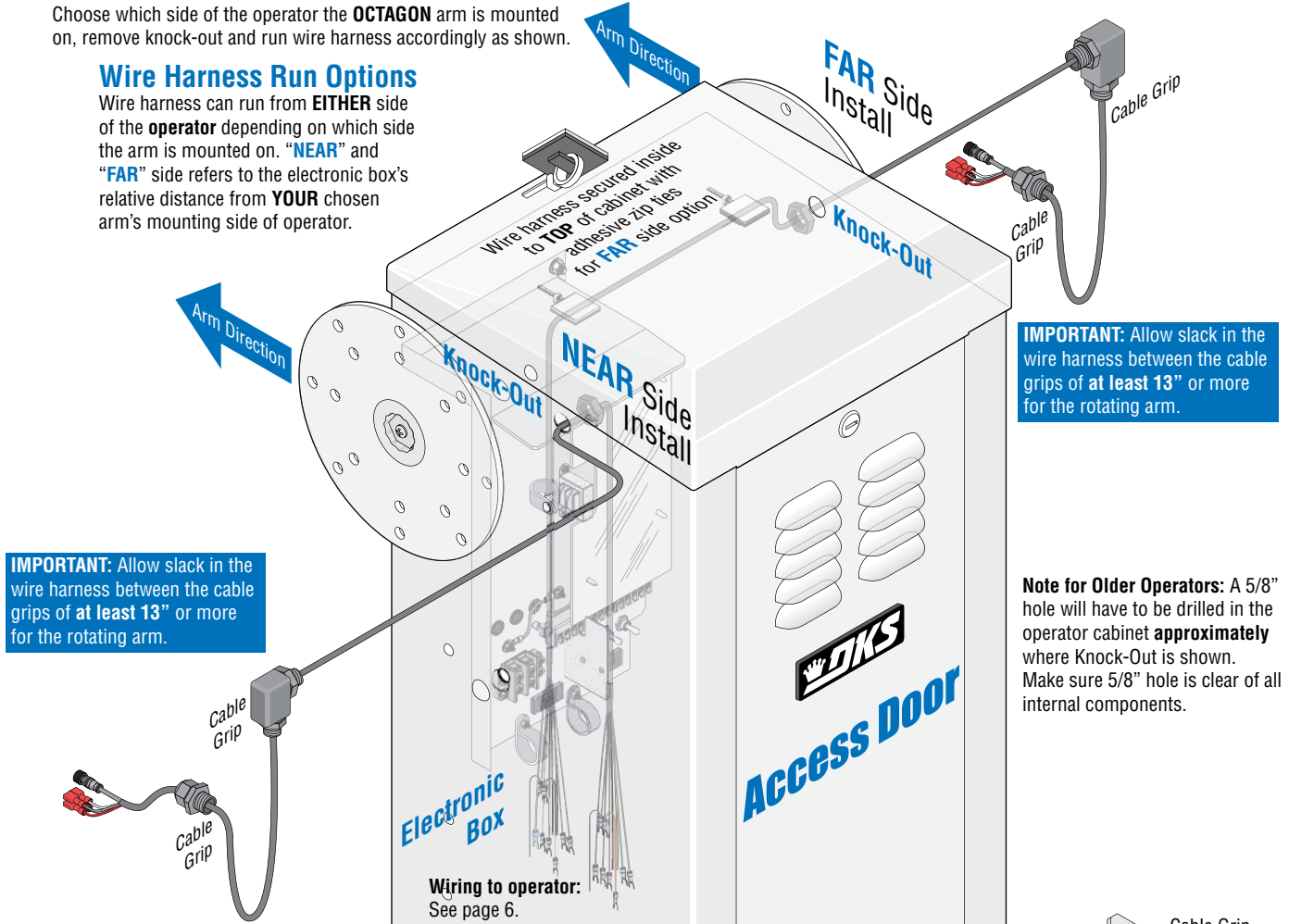
- 14 Ft 1-piece arm: Optional Edge See page 8
- 14 Ft 2-piece arm: See page 7
- 17 Ft arm: See page 11

3 Install OCTAGON Arm Wire Harness (8080-356)

Choose which side of the operator the **OCTAGON** arm is mounted on, remove knock-out and run wire harness accordingly as shown.

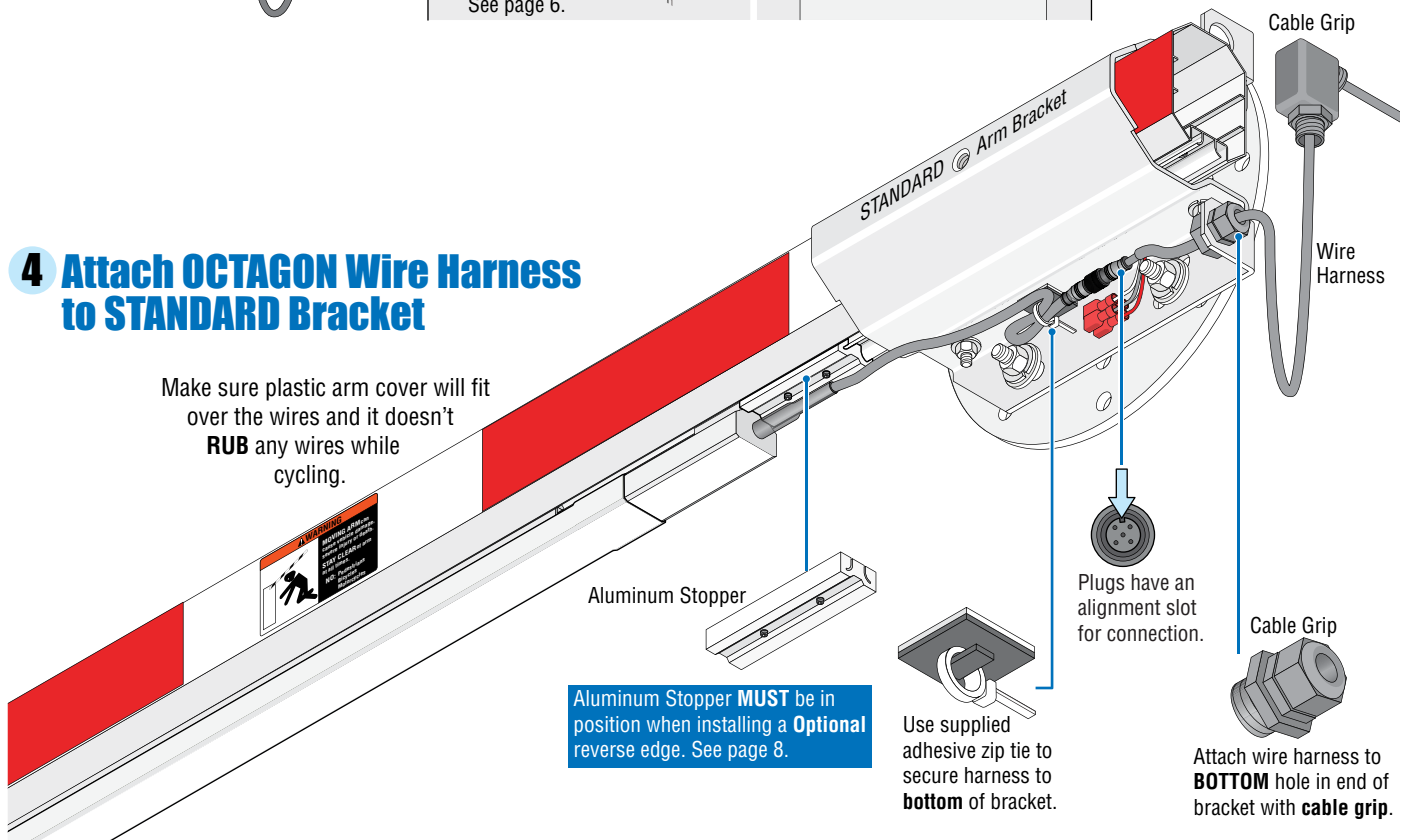
Wire Harness Run Options

Wire harness can run from **EITHER** side of the operator depending on which side the arm is mounted on. “**NEAR**” and “**FAR**” side refers to the electronic box’s relative distance from **YOUR** chosen arm’s mounting side of operator.

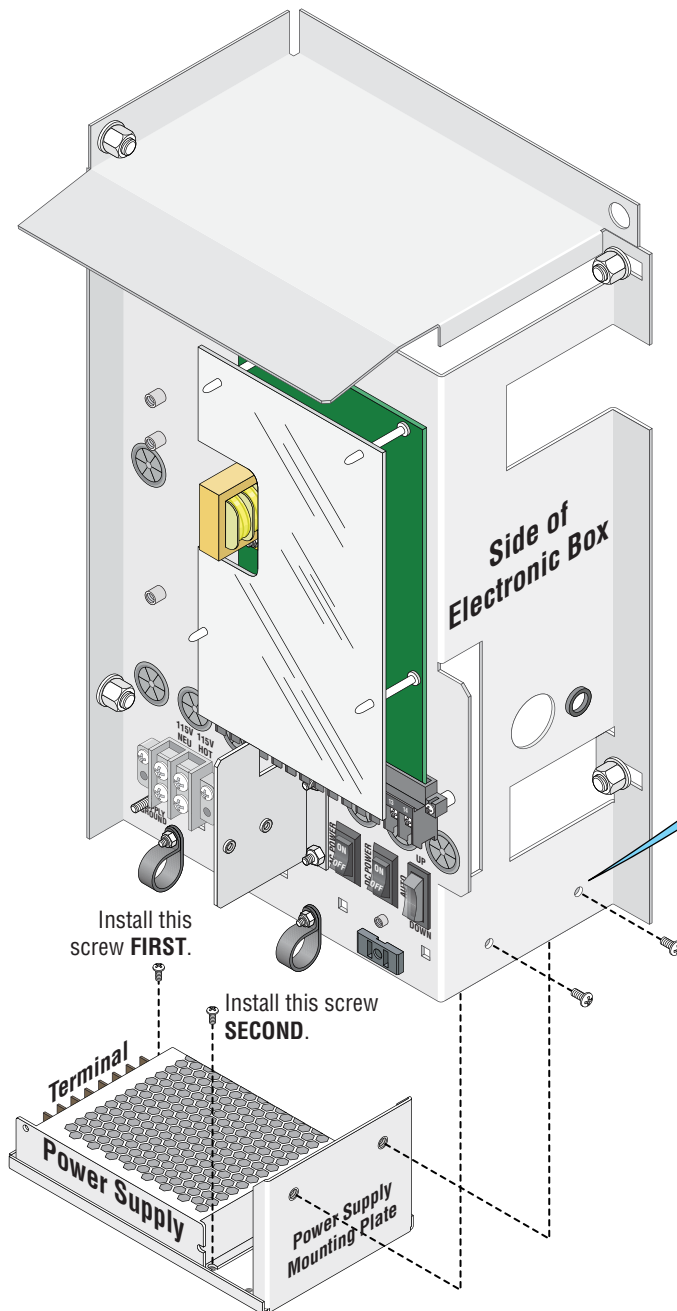


4 Attach OCTAGON Wire Harness to STANDARD Bracket

Make sure plastic arm cover will fit over the wires and it doesn't **RUB** any wires while cycling.

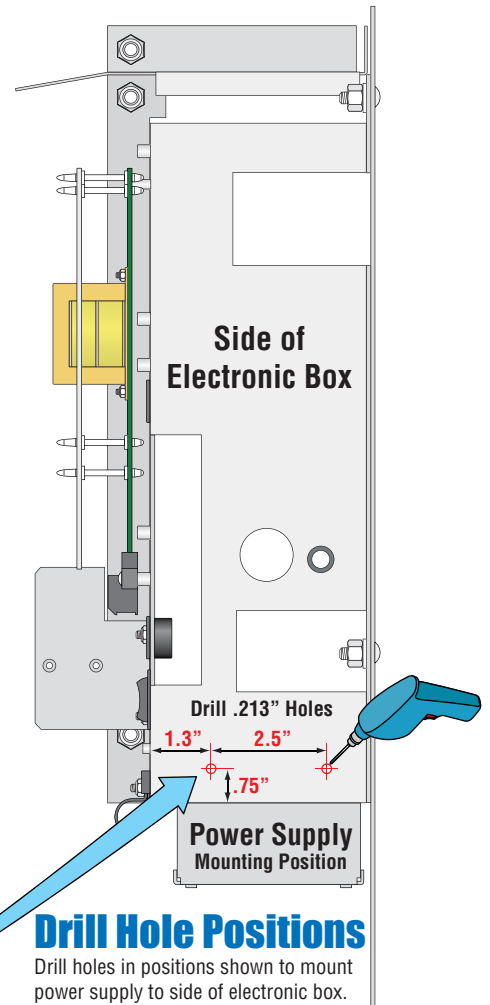


5 Mount Power Supply (OCTAGON arm ONLY)



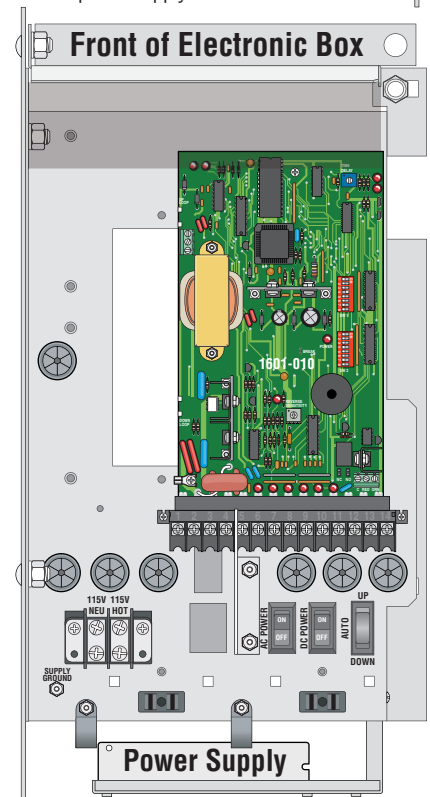
Mount Power Supply

IMPORTANT: Power supply **MUST** be wired **BEFORE** mounting it on the operator as shown. Terminals are only accessible when power supply is **NOT** mounted. See next page for wiring.



Drill Hole Positions

Drill holes in positions shown to mount power supply to side of electronic box.



8 Connect Wire Harness to Operator ... and Wiring OPTIONS

MAKE SURE ALL POWER IS TURNED OFF TO OPERATOR!

OPTIONAL DKS Pedestrian Protection System Set-up

Note: The arm will **NOT** allow a tailgating vehicle unauthorized entry, **BUT** helps protect pedestrians from a lowering arm when they are in the arm's swing path.

(Sold Separately) **Devices Required:**

Plug-in Single Channel Loop Detector with Auxiliary Relay
P/N 9411-010

DKS Photocell
P/N 8080-057

See 1601-065 PDF for more info **when used.**
HIGHLY Recommended

Keep wires clear of all moving parts.

Note: The traffic light is wired together with the break-away arm in **some** installations when desired, so it's shown here for wiring reference. See Traffic Light 1603-264 PDF for more info **when used.**

Recommended

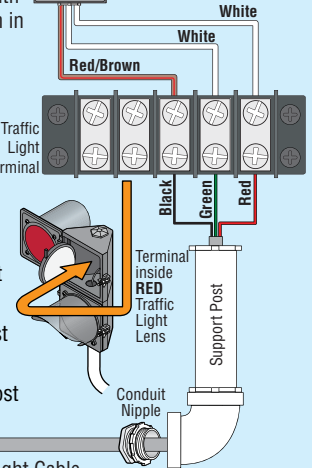
6 Ft Cable / No Post
P/N 1603-221

6 Ft Cable / 35" Post
P/N 1603-222

11 Ft Cable / 95" Post
P/N 1603-223

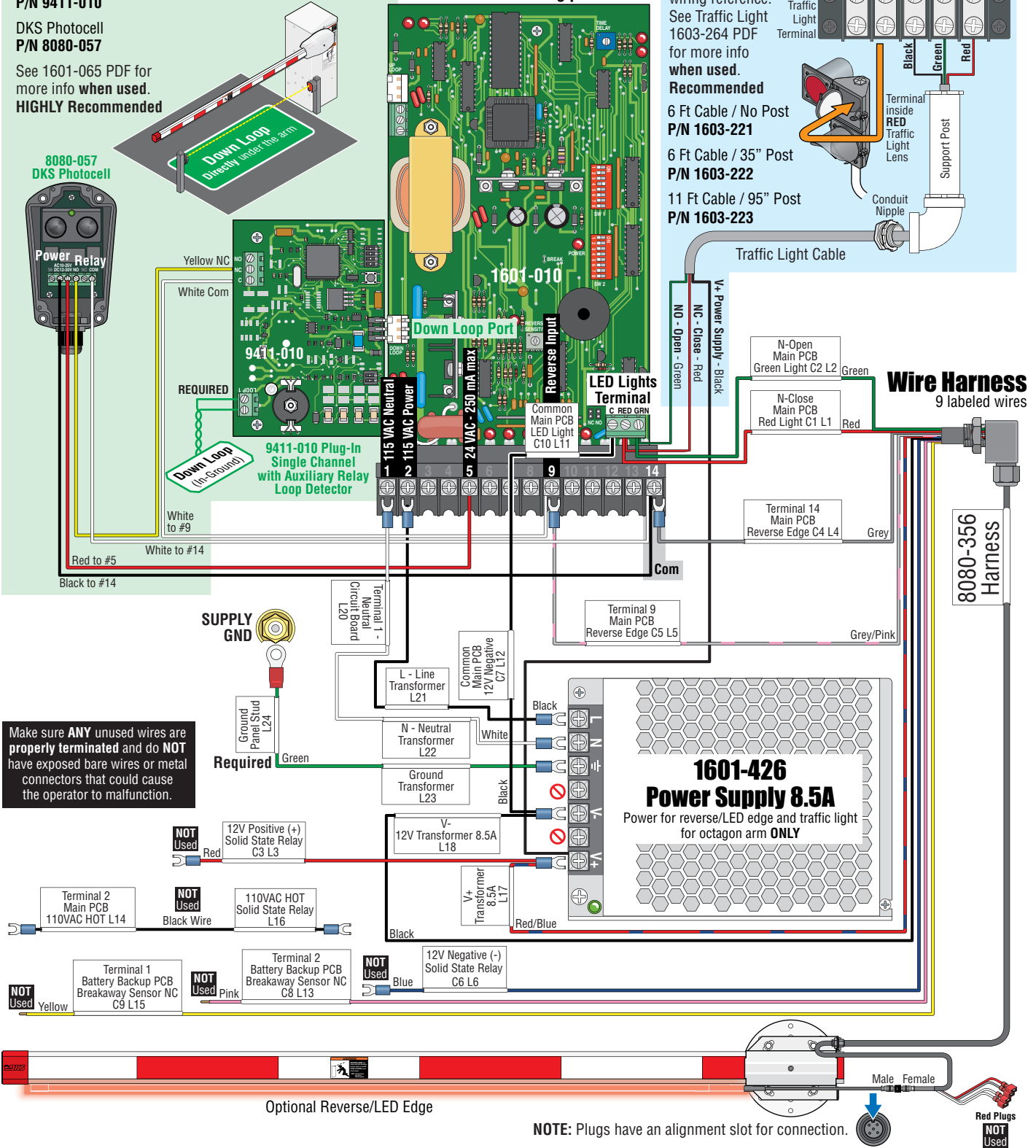
OPTIONAL LED Traffic Light

Different Kits Available



Wire Harness
9 labeled wires

8080-356
Harness



Make sure **ANY** unused wires are properly terminated and do **NOT** have exposed bare wires or metal connectors that could cause the operator to malfunction.

SUPPLY GND

Required

NOT Used 12V Positive (+) Solid State Relay C3 L3

NOT Used Terminal 2 Main PCB 110VAC HOT L14

NOT Used Terminal 1 Battery Backup PCB Breakaway Sensor NC C9 L15

NOT Used Terminal 2 Battery Backup PCB Breakaway Sensor NC C8 L13

NOT Used 12V Negative (-) Solid State Relay C6 L6

NOT Used 110VAC HOT Solid State Relay L16

14 Ft 2-Piece OCTAGON Arm Assembly

DoorKing Part Number

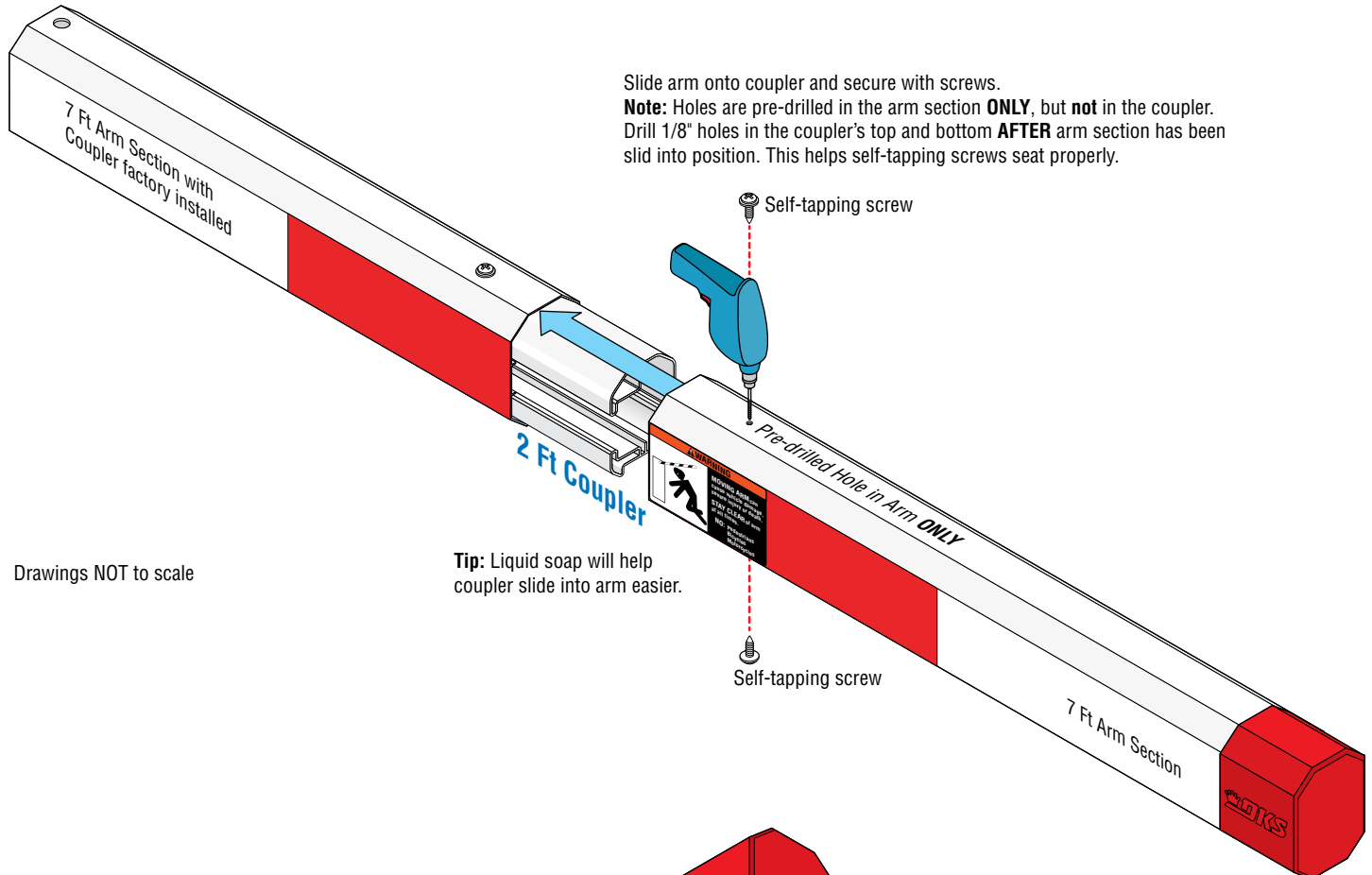
1601-567

14 Ft 2-Piece Octagon Arm Kit

This kit is designed for use on ALL 1600 barrier gate operators. It has two 7 ft arm sections that assemble into a 14 ft arm.

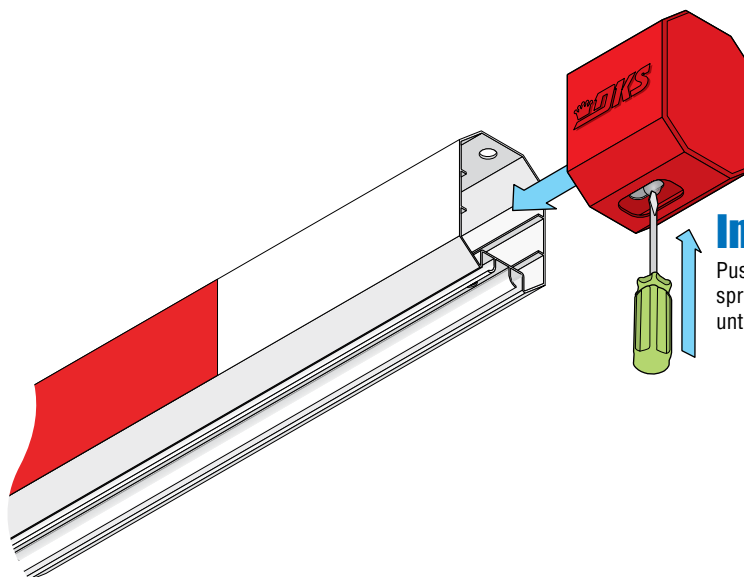
A reverse edge **SHOULD** be installed on this arm. It is sold separately but **highly recommended** for safety, see next page.

Assemble 2-Piece Arm



Drawings NOT to scale

Tip: Liquid soap will help coupler slide into arm easier.



If Shortening Arm see page 10

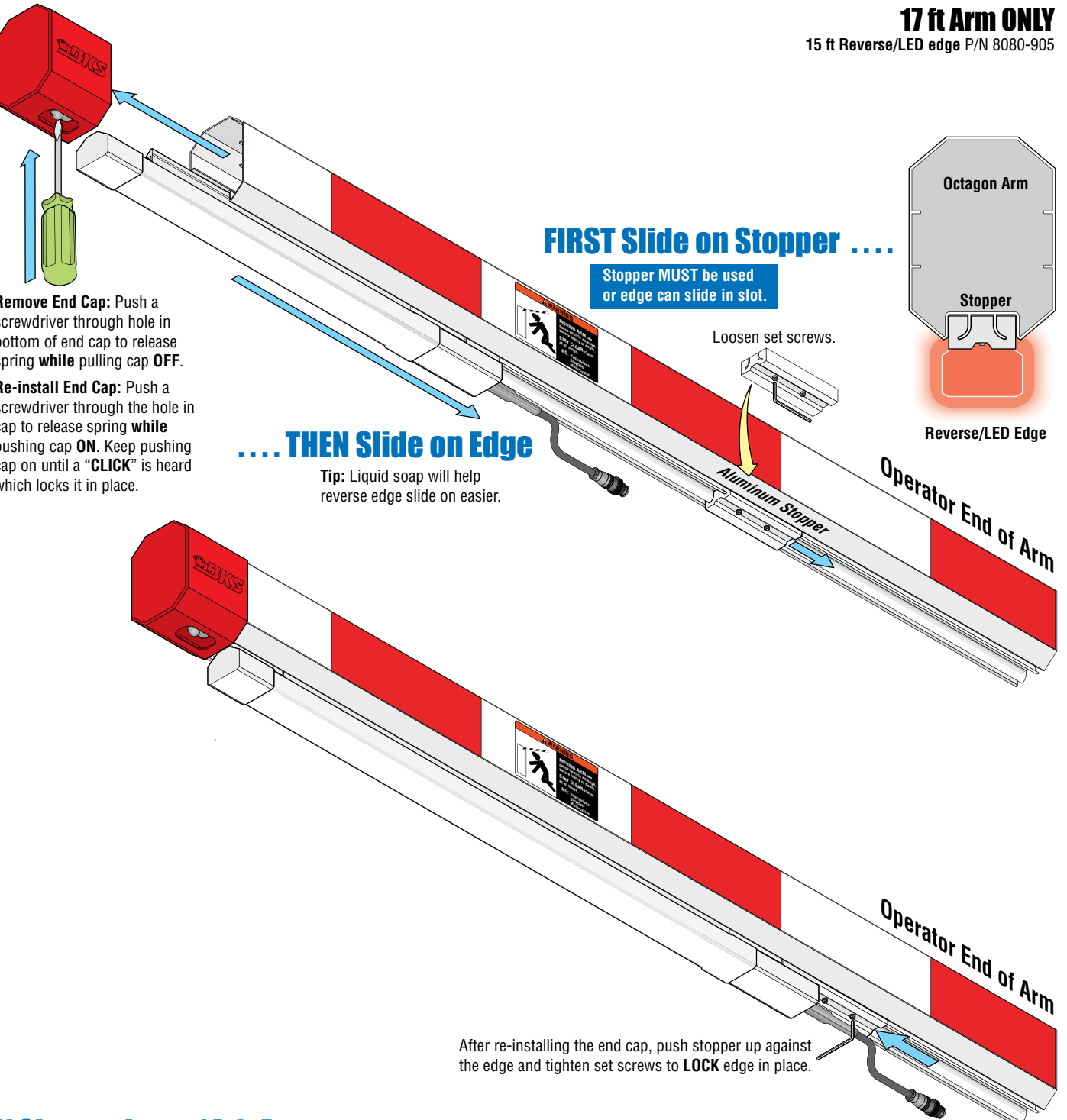
1601-268-S-4-26

Reverse Edge - Reverse/LED Edge Installation

These kits are designed to install on a **Standard** 14 ft 1-piece or 2-piece and a 17 ft **OCTAGON** arm on the 1600 barrier gate operators but **NOT** on a 1603 auto-spikes operator with a **ROUND** arm.

Note: DO NOT operate arm with a **malfunctioning** reverse edge.

Installation



Remove End Cap: Push a screwdriver through hole in bottom of end cap to release spring **while** pulling cap **OFF**.

Re-install End Cap: Push a screwdriver through the hole in cap to release spring **while** pushing cap **ON**. Keep pushing cap on until a "**CLICK**" is heard which locks it in place.

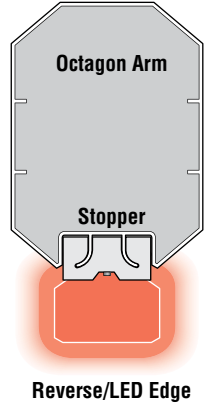
FIRST Slide on Stopper

Stopper MUST be used or edge can slide in slot.

Loosen set screws.

.... THEN Slide on Edge

Tip: Liquid soap will help reverse edge slide on easier.



After re-installing the end cap, push stopper up against the edge and tighten set screws to **LOCK** edge in place.

If Shortening a 14-ft Arm see page 10

MALE Plug connects to the 8080-356 wire harness. see page 6.

14 Ft Rubber Bumper Installation

DoorKing Part Number
8080-089
14 Ft Rubber Bumper

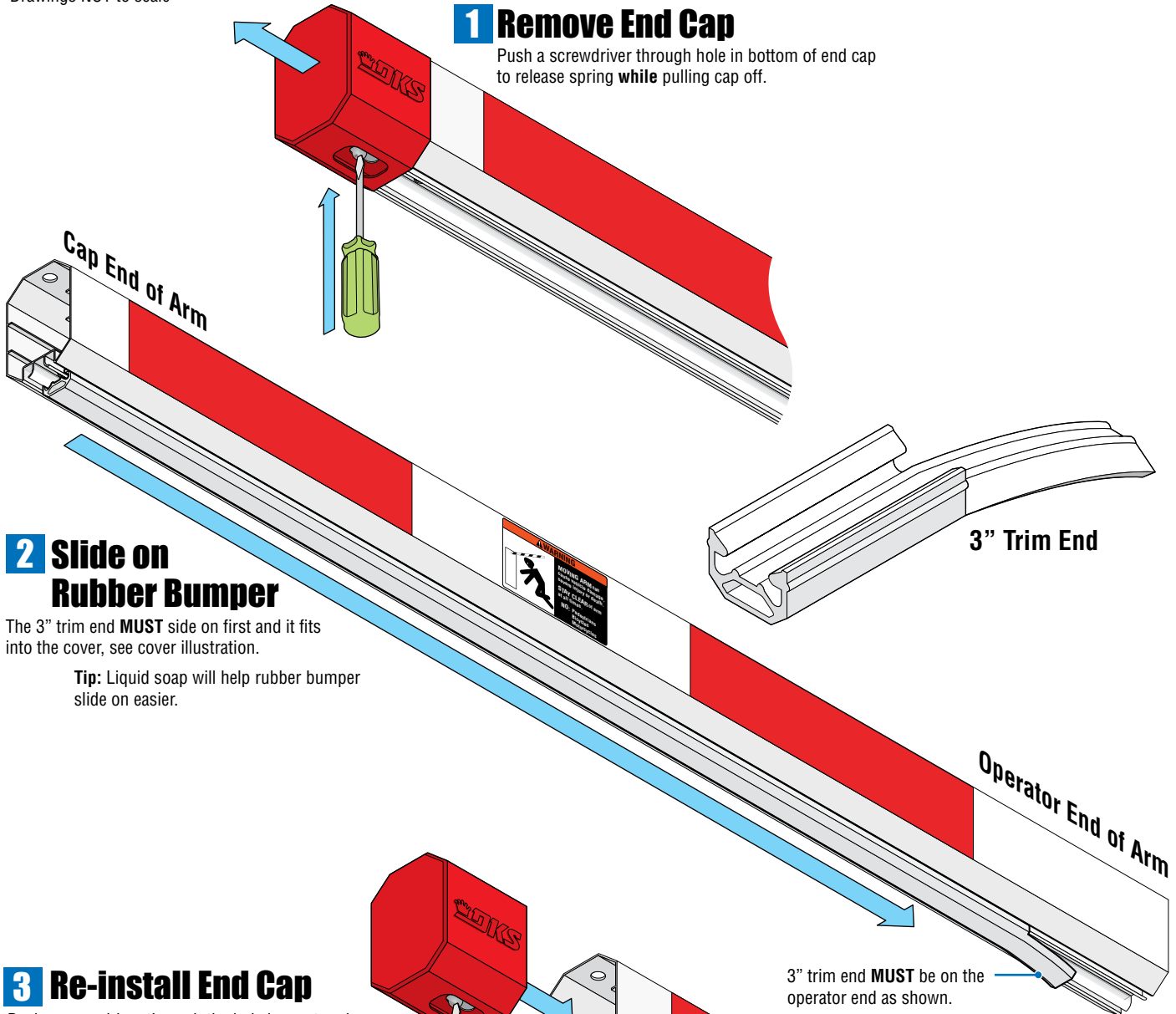
This rubber bumper is designed to install on a 14 ft 1-piece or 2-piece **octagon arm** (not included) for a 1601, 1603 auto-spikes, 1620 lane barrier or a 1625 wedge barrier gate operator. It **CANNOT** be used on a 1602 operator. It offers **MINIMAL** safety protection.

Installation

Drawings NOT to scale

1 Remove End Cap

Push a screwdriver through hole in bottom of end cap to release spring **while** pulling cap off.



2 Slide on Rubber Bumper

The 3" trim end **MUST** side on first and it fits into the cover, see cover illustration.

Tip: Liquid soap will help rubber bumper slide on easier.

3 Re-install End Cap

Push a screwdriver through the hole in cap to release spring **while** pushing cap on. Keep pushing cap on until a **"CLICK"** is heard which locks it in place.

If using a shortened arm rubber bumper can be cut to length

1601-268-S-4-26

Shortening a 14-Ft OCTAGON Arm to 7-Ft, 8-Ft, 11-Ft

DoorKing Part Numbers:

Reverse Edge

- (Arm cut to 7 ft) **5 ft Reverse edge** P/N 8080-605
- (Arm cut to 8 ft) **6 ft Reverse edge** P/N 8080-606
- (Arm cut to 11 ft) **9 ft Reverse edge** P/N 8080-609
- (14 ft Arm) **12 ft Reverse edge** P/N 8080-612

Reverse/LED Edge

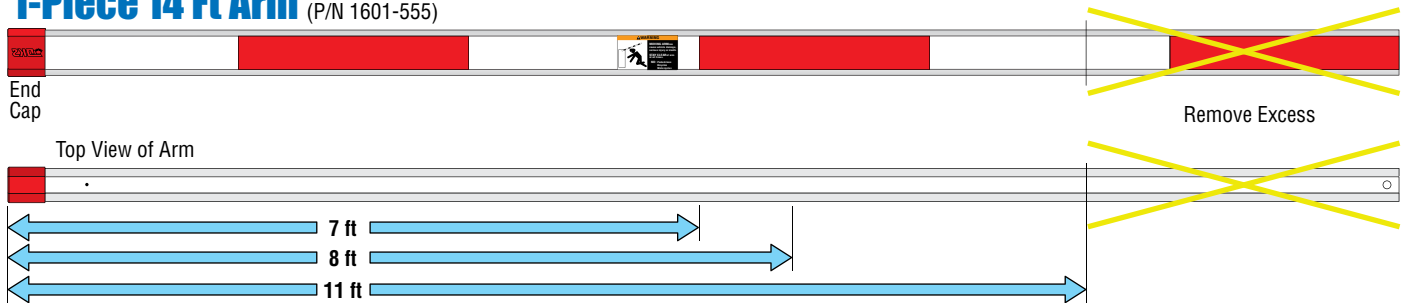
- (Arm cut to 7 ft) **5 ft Reverse/LED edge** P/N 8080-905
- (Arm cut to 8 ft) **6 ft Reverse/LED edge** P/N 8080-906
- (Arm cut to 11 ft) **9 ft Reverse/LED edge** P/N 8080-909
- (14 ft Arm) **12 ft Reverse/LED edge** P/N 8080-912

A 14 ft 1-piece **OR** 2-piece arm can be shortened to fit **different** length reverse edges. The shortened arm lengths are shown **depending on the length of the reverse edge chosen**. Follow the diagrams below depending on which style arm you have selected to shorten.

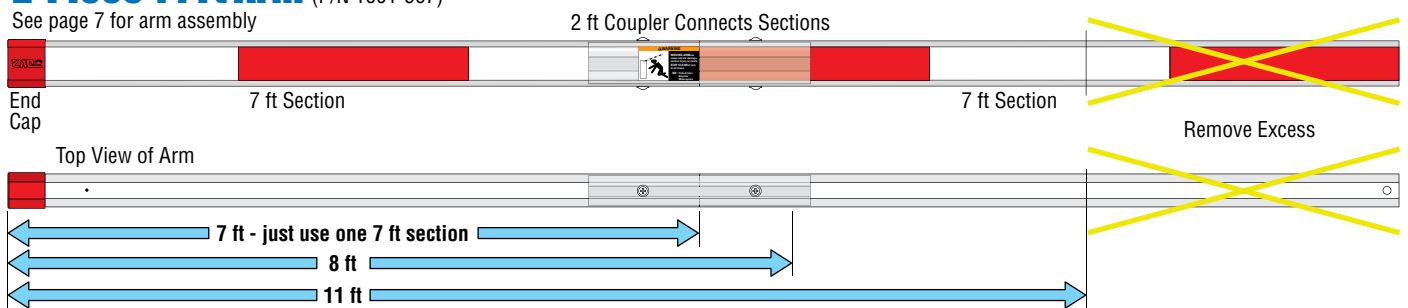
Note: Reverse edges **CANNOT** be cut down. They **MUST** remain intact.

Drawings NOT to scale

1-Piece 14 Ft Arm (P/N 1601-555)



2-Piece 14 Ft Arm (P/N 1601-567)



17 Ft OCTAGON Arm Assembly for a 1602 ONLY

DoorKing Part Numbers:

1602-303

Octagon Arm 3-ft Extension Kit

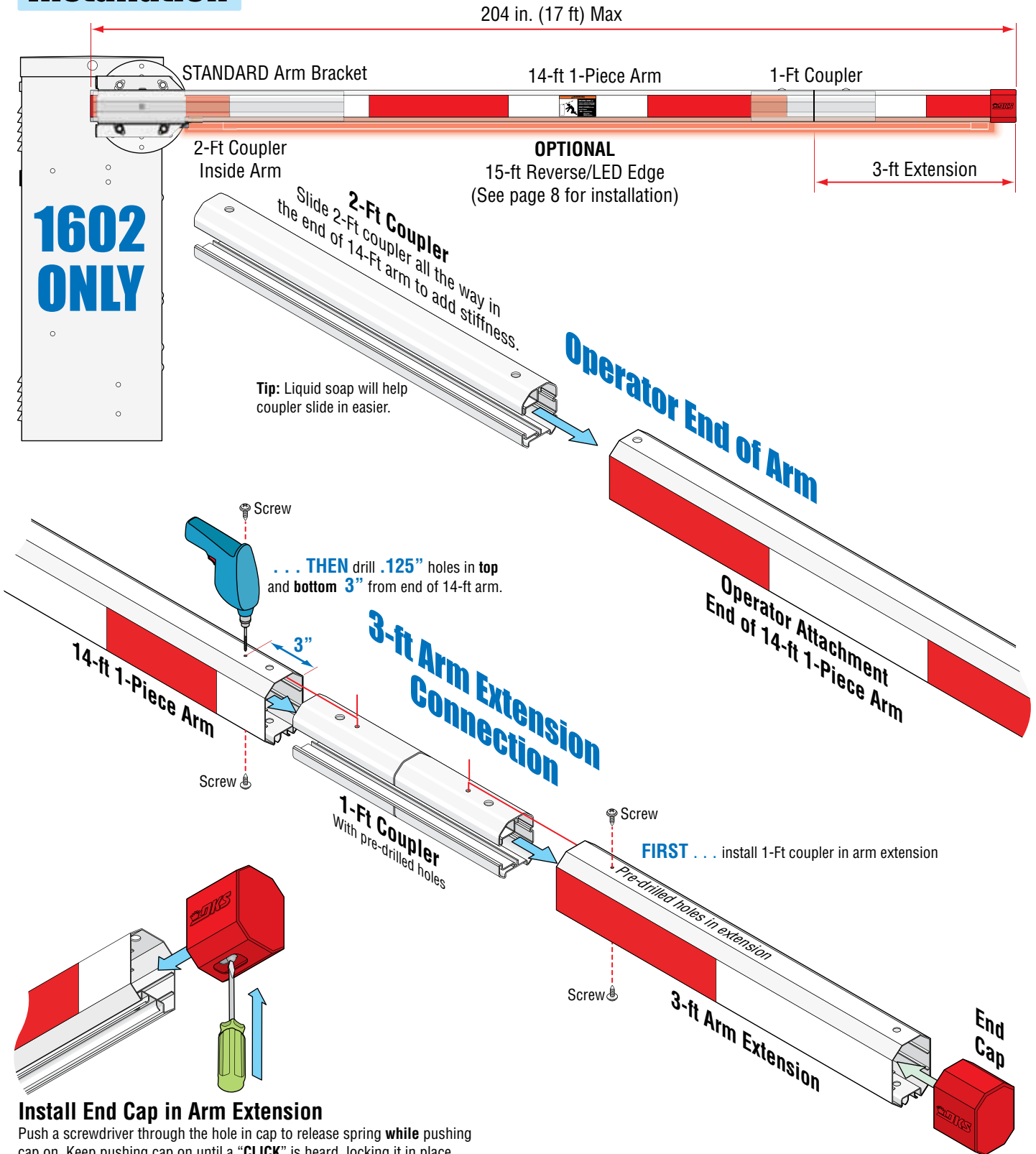
8080-915

15 ft Reverse/LED Edge
(Sold Separately)

This kit is designed for a **1602** barrier gate operator **ONLY**. It **CANNOT** be used on a 1601 OR 1603 auto-spikes. It will extend a 14 ft octagonal arm an **extra three feet**. The 15 ft reverse edge is sold separately but **highly recommended** for safety when lowering this **very long arm**.

Installation

Drawing NOT to scale



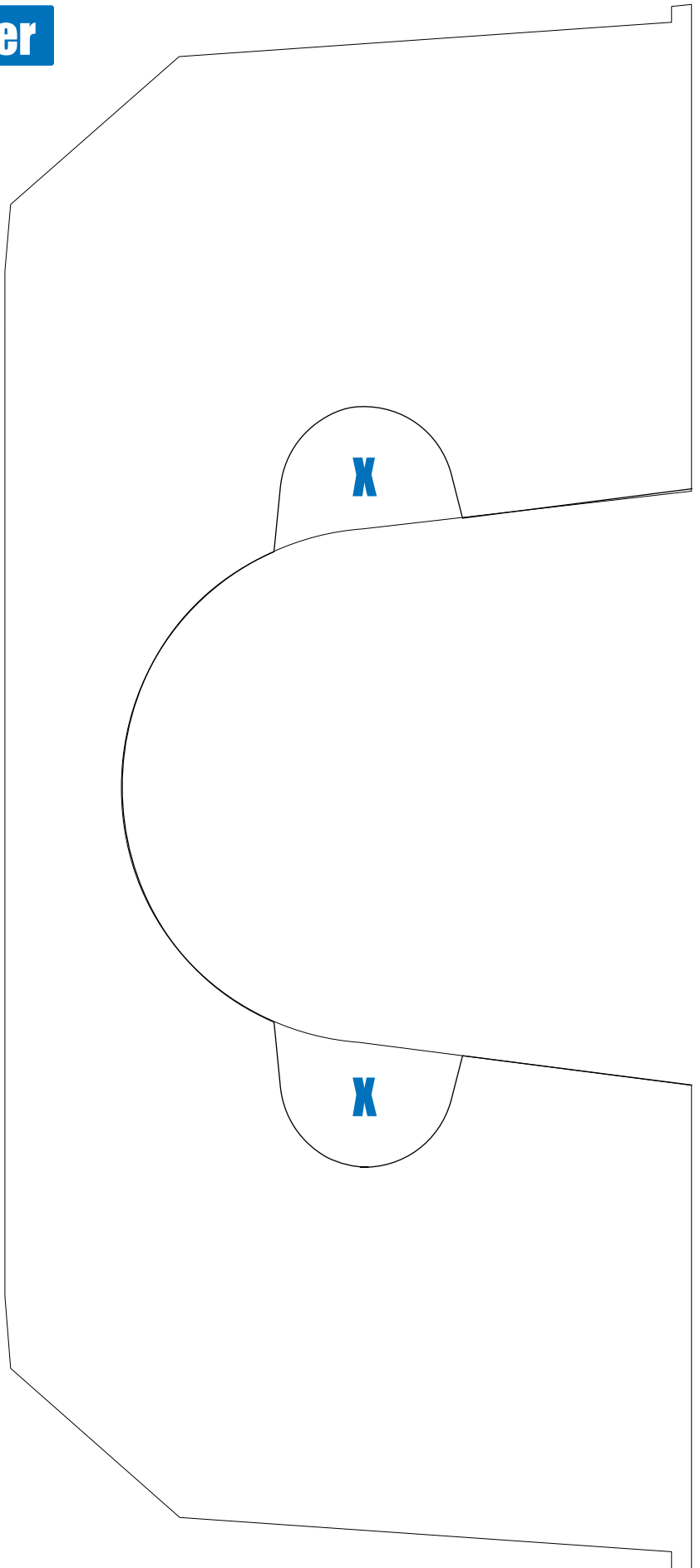
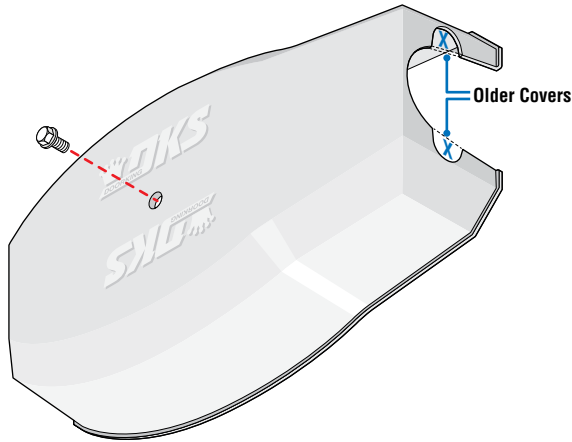
Install End Cap in Arm Extension

Push a screwdriver through the hole in cap to release spring while pushing cap on. Keep pushing cap on until a "CLICK" is heard, locking it in place.

1601-268-S-4-26

Older Existing Arm Cover

Older existing plastic arm cover will need to have a notch cut out for a **OCTAGON** Arm's reverse edge. Only one side of the cover will need to be cut out depending on which side of the operator the arm is mounted on. Use this template as a guide to remove material from the cover.



14 FT ROUND Arm Options

DoorKing Part Numbers:

1601-524

2-Piece Round 14-ft Arm

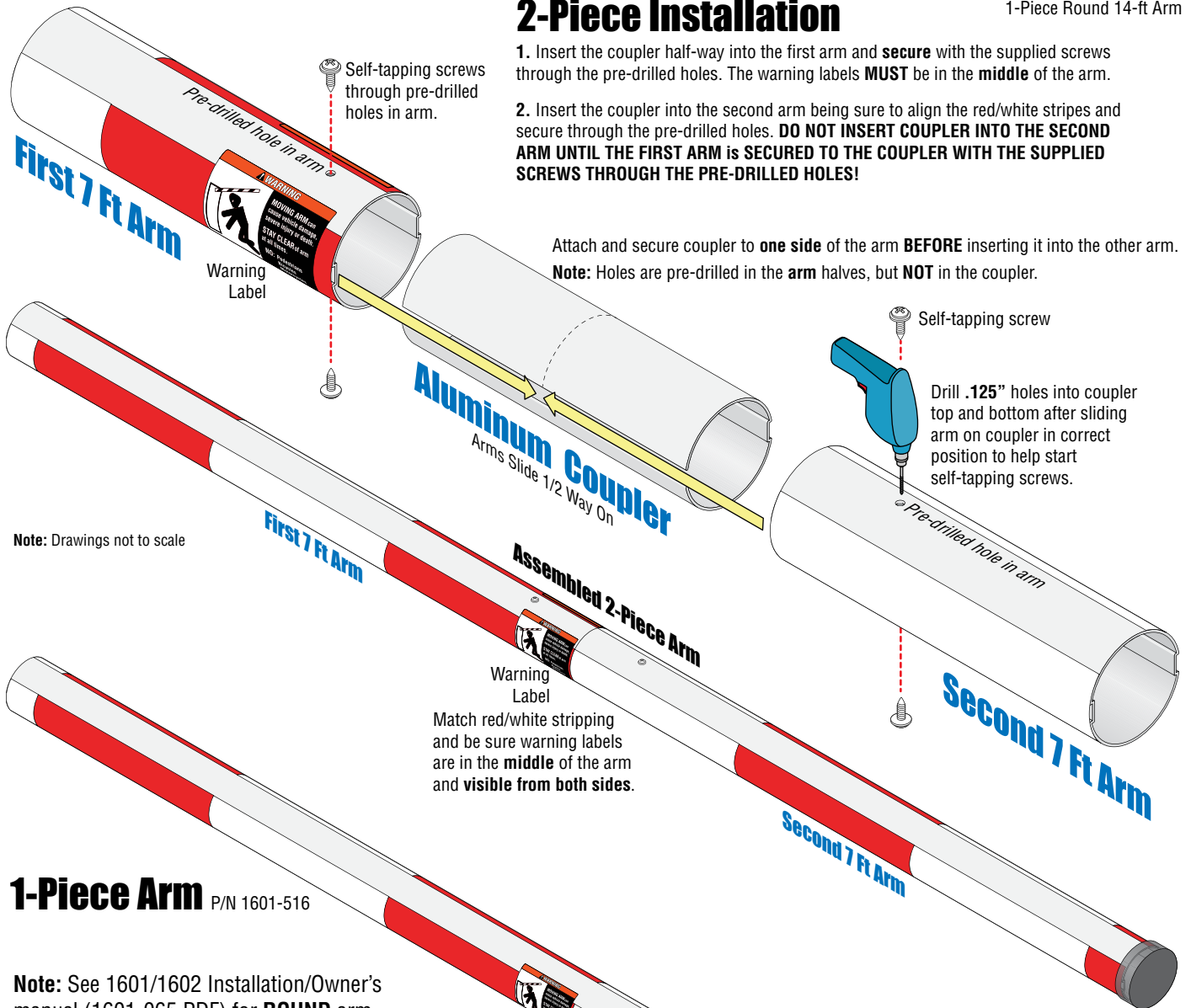
1601-516

1-Piece Round 14-ft Arm

2-Piece Arm P/N 1601-524

2-Piece Installation

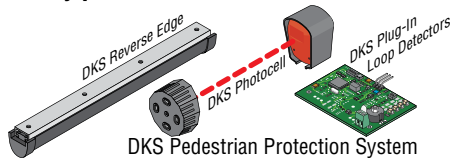
1. Insert the coupler half-way into the first arm and **secure** with the supplied screws through the pre-drilled holes. The warning labels **MUST** be in the **middle** of the arm.
2. Insert the coupler into the second arm being sure to align the red/white stripes and secure through the pre-drilled holes. **DO NOT INSERT COUPLER INTO THE SECOND ARM UNTIL THE FIRST ARM IS SECURED TO THE COUPLER WITH THE SUPPLIED SCREWS THROUGH THE PRE-DRILLED HOLES!**



Note: Drawings not to scale

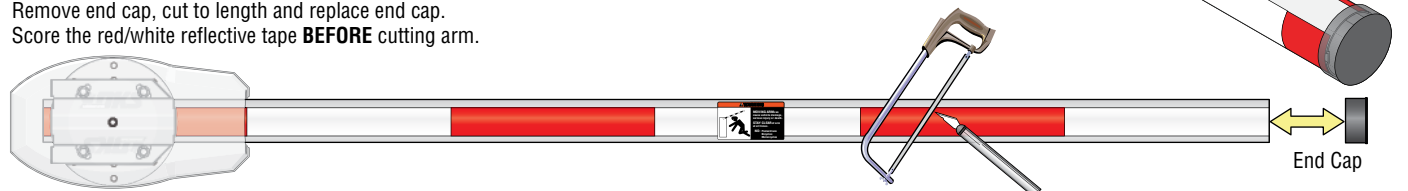
1-Piece Arm P/N 1601-516

Note: See 1601/1602 Installation/Owner's manual (1601-065 PDF) for **ROUND** arm safety protection device information.



Shortening Arm

Either style arm can be cut down to any desired length. Remove end cap, cut to length and replace end cap. Score the red/white reflective tape **BEFORE** cutting arm.



1601-268-S-4-26

