

# OCTAGON FOLDING ARM INSTALLATION

This arm is designed **ONLY** for the 1601 and 1603 model barrier gate operators **with or without Reverse Edge & LEDs**. Recommended for low headroom applications.

DoorKing Part Numbers:

**1601-812**

2-6ft Folding Octagon Arms

**1601-242**

Standard Mount Hardware Kit

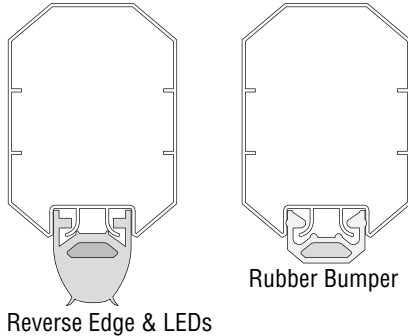
**1601-822**

2-Reverse Edge & LEDs Kit

**8080-089**

Rubber Bumper

## General Layout



## LED Arm Raised - Green Lights



Choose: Reverse Edge & LEDs **OR** Rubber Bumper **OR** Nothing

**IMPORTANT:** Reversing edge **CANNOT** be shortened.

**Tip:** Liquid soap will help edges slide on easier.

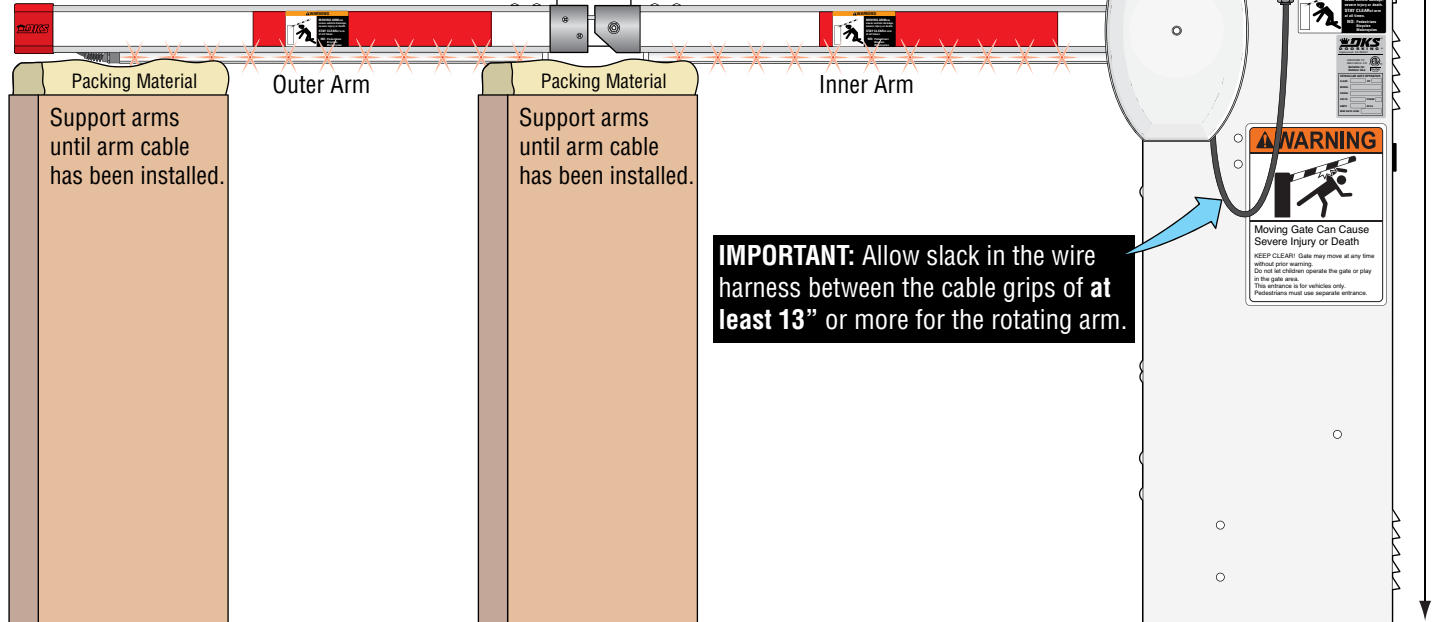
**1601:**  
**109"**

**1603:**  
**113"**

Adjust arm cable with eyebolt and cable clamps to level outer arm in **DOWN** position **ONLY**.  
**IMPORTANT:** **DO NOT** adjust arm cable too tight or it will bind when operating.

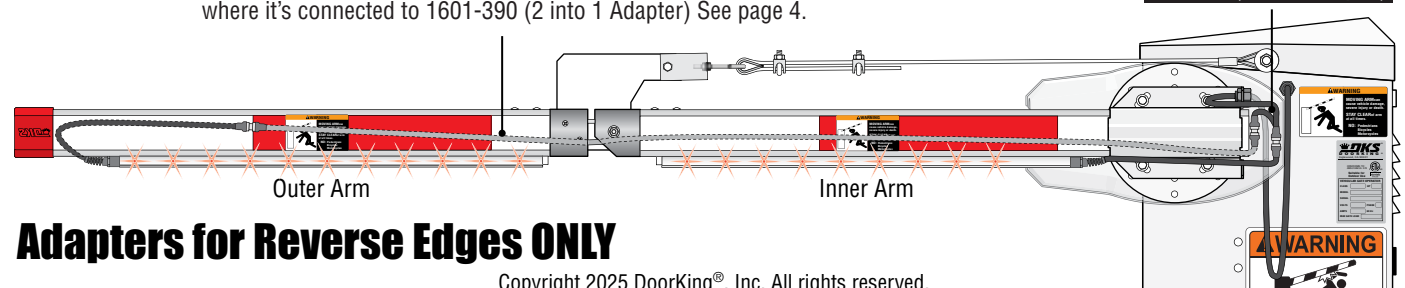
## LED Arm Lowered - Red Lights

Drawings not to scale



**1601-391 (17ft Long Adapter)** runs **inside** arms and thru elbow to end of arm where it's connected to 1601-390 (2 into 1 Adapter) See page 4.

**1601-390 (2 into 1 Adapter)**



## Adapters for Reverse Edges ONLY

Copyright 2025 DoorKing®, Inc. All rights reserved.

# Installation Guidelines

DoorKing Part Numbers:

**1601-812**

2-6ft Folding Octagon Arms

**1601-242**

Standard Mount Hardware Kit

**1601-822**

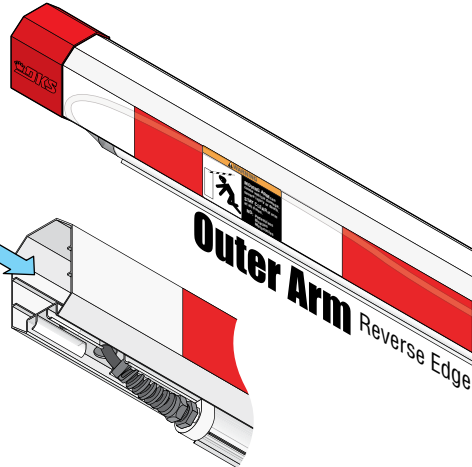
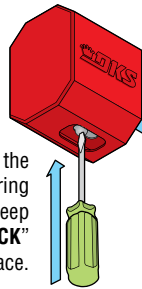
2-Reverse Edge & LEDs Kit

**8080-089**

Rubber Bumper

## End Cap

Push a screwdriver through the hole in cap to release spring **while** pushing cap on. Keep pushing cap on until a "**CLICK**" is heard which locks it in place.

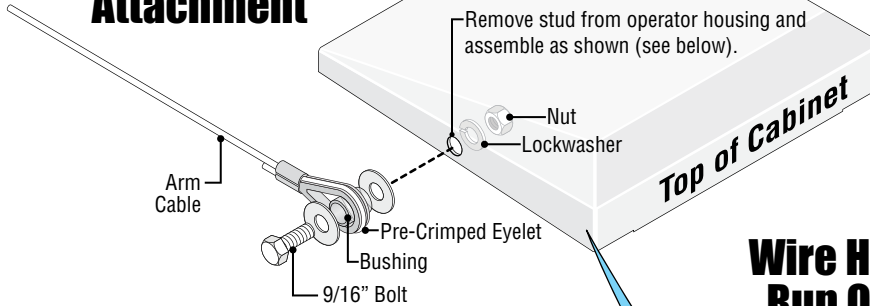


Self-Tapping Screws through **Pre-Drilled Holes** in Top and Bottom of **EACH** Arm.

## Elbow Assembly

**IMPORTANT:** Place 1601-391 (17ft Long Adapter) thru elbow and **inside** both arms **BEFORE** securing arms to elbow.

## Folding Arm Cable Attachment



Remove stud from operator housing and assemble as shown (see below).

Nut  
Lockwasher

Arm Cable

Pre-Crimped Eyelet  
Bushing  
9/16" Bolt

Top of Cabinet

## Wire Harness Run Options

(Wire Harness 8080-356)

Far Side Option

Reverse Edge  
Inner Arm  
End of Cable  
**IMPORTANT:** Arm Cable **MUST** be clamped as shown.

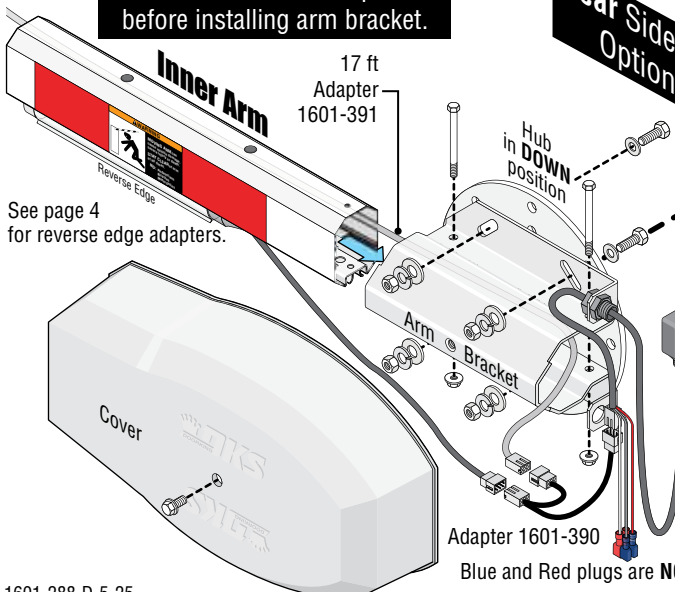
Cable Grip

## Arm Connection to Operator

Choose which side of the operator the arm is mounted on, remove knock-out and run wire harness accordingly as shown.

**Test hub UP and DOWN position before installing arm bracket.**

Near Side Option



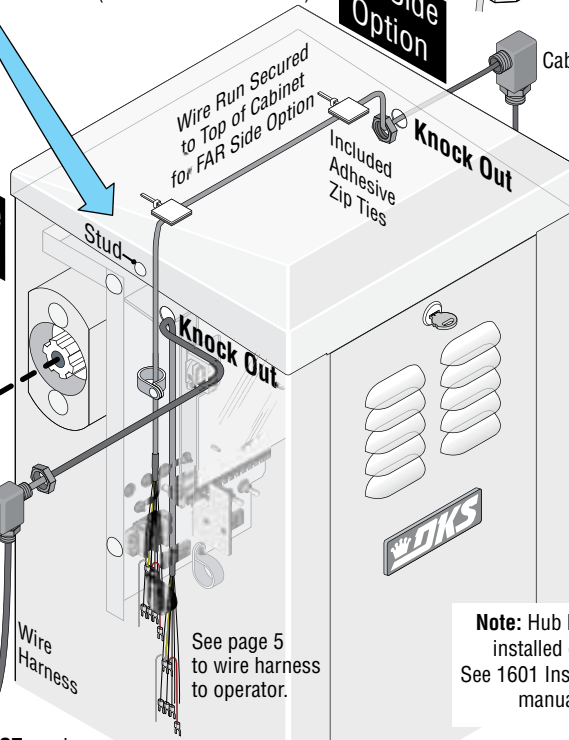
See page 4 for reverse edge adapters.

17 ft  
Adapter  
1601-391

Hub in DOWN position

Adapter 1601-390

Blue and Red plugs are **NOT** used.



Wire Run Secured to Top of Cabinet for FAR Side Option

Included Adhesive Zip Ties

Knock Out

See page 5 to wire harness to operator.

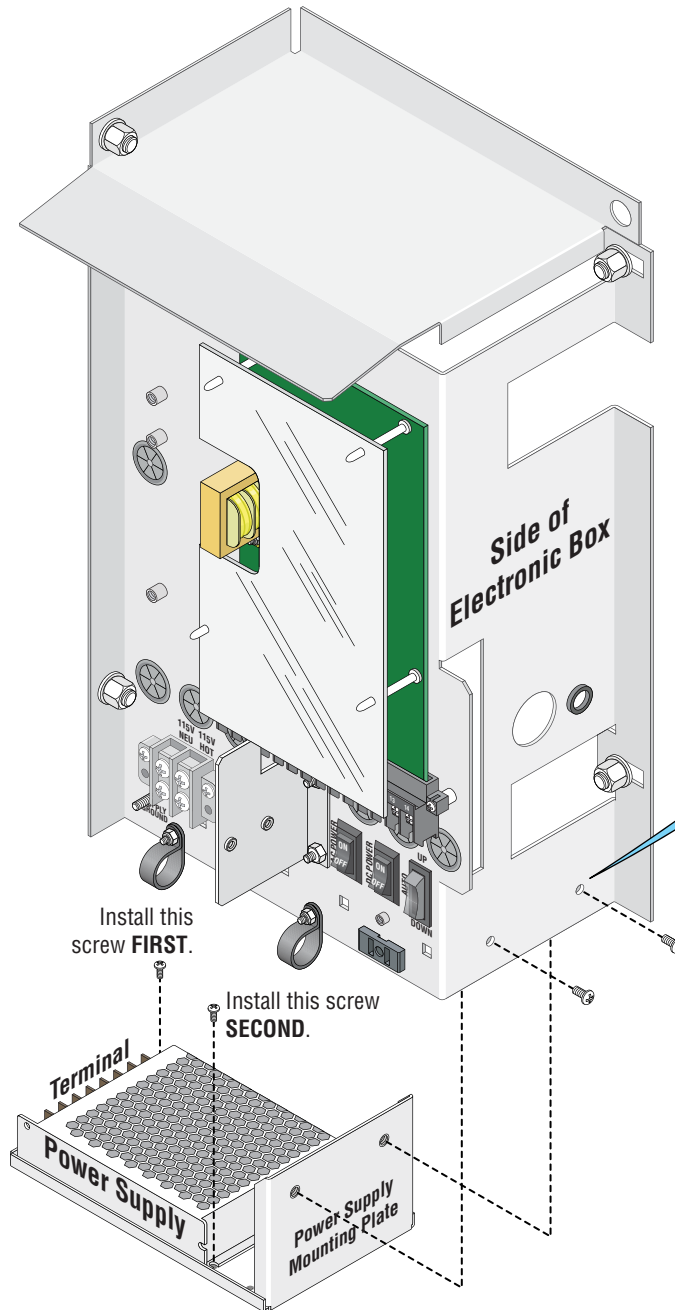
**Note:** Hub **MUST** already be installed on gate operator. See 1601 Installation/Owner's manual for correct hub installation.

# Mount Power Supply

DoorKing Part Number:

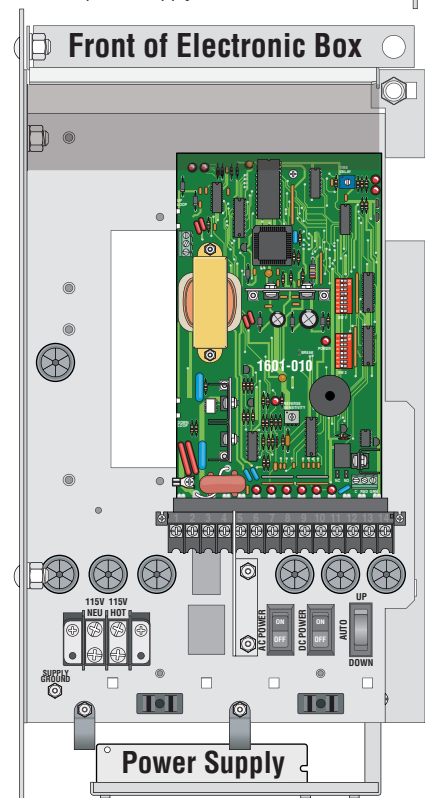
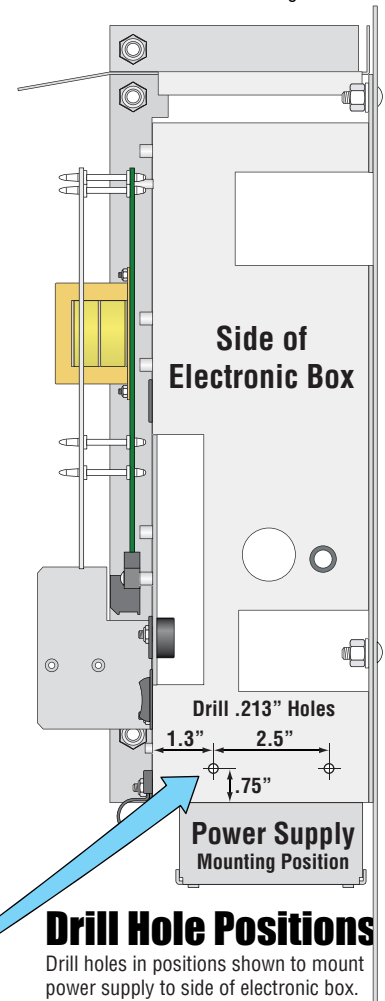
**1601-822**

2-Reverse Edge & LEDs Kit



## Mount Power Supply

**IMPORTANT:** Power supply **MUST** be wired **BEFORE** mounting it as shown. See page 5.



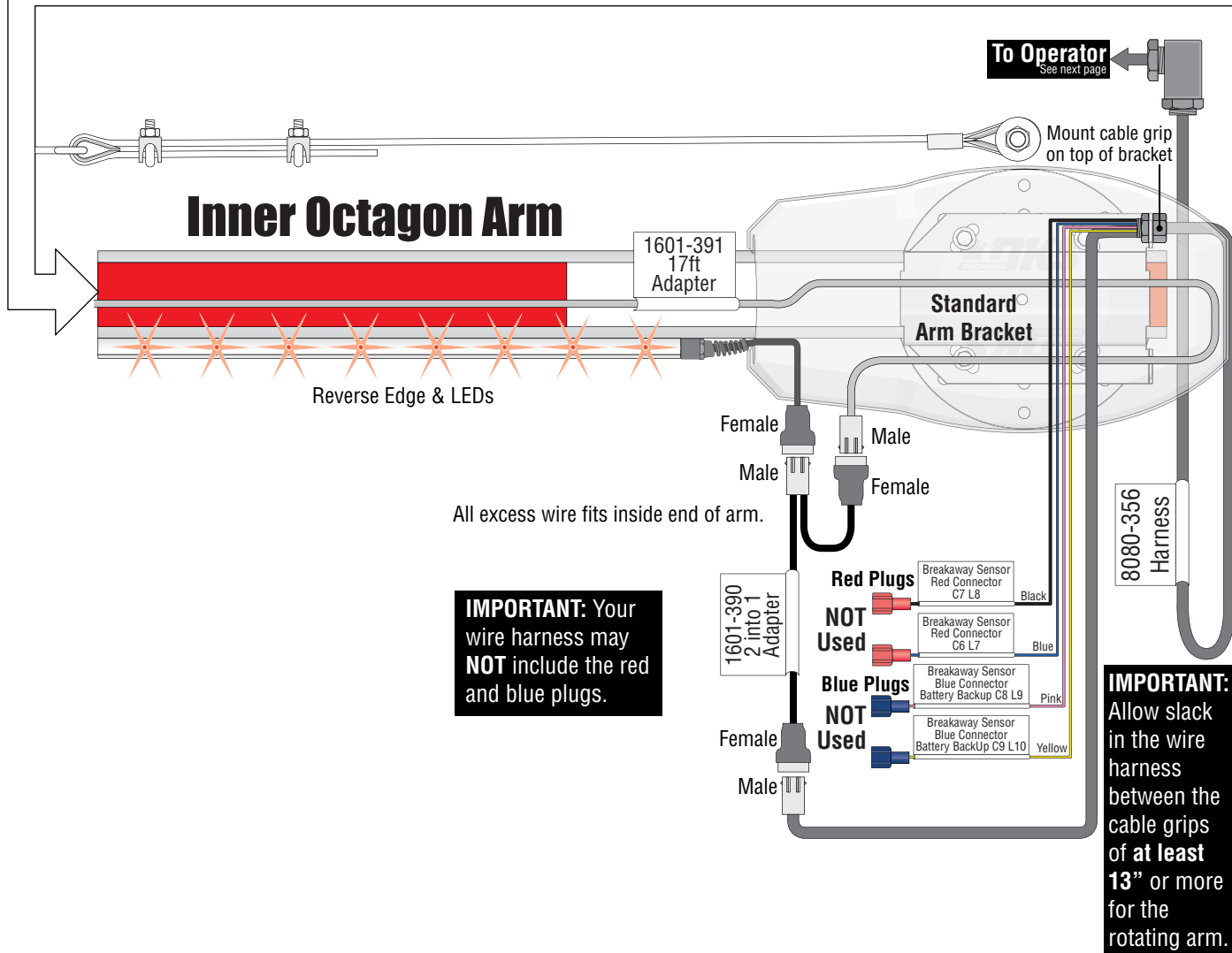
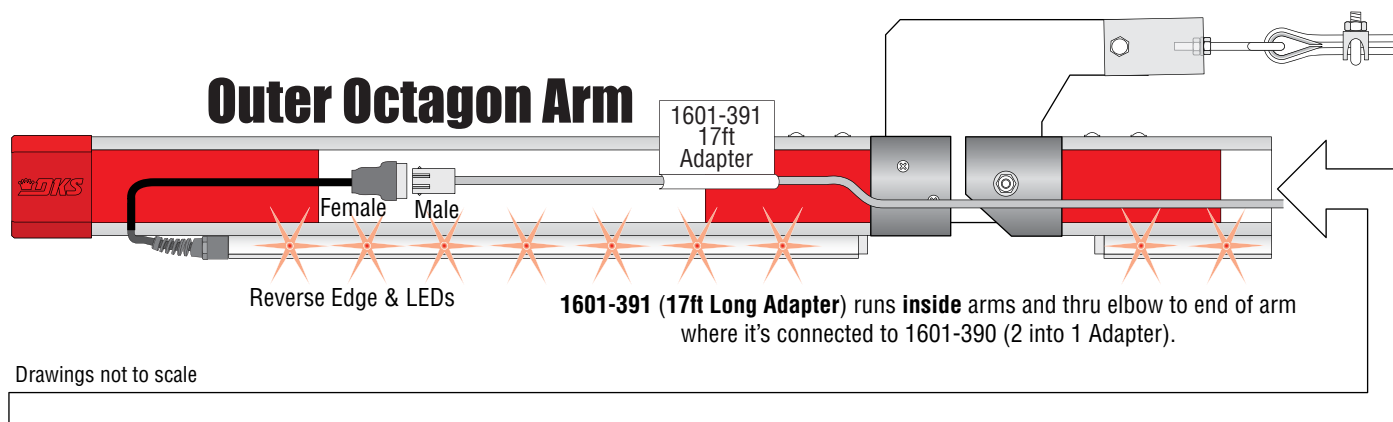
# Reverse Edge Folding Arm Connection

DoorKing Part Number:

**1601-822**

2-Reverse Edge & LEDs Kit

**MAKE SURE ALL POWER IS TURNED OFF TO OPERATOR!**



DoorKing Part Number  
**1601-822**  
2-Reverse Edge & LEDs Kit

**NOTE:** The traffic light is wired together with the folding arm in some installations, so it's shown here for wiring reference. See Traffic Light manual 1603-264 for more info when used.

**Optional**  
**LED Traffic**  
**Light Kit**  
Sold Separately

