

1601 BREAKAWAY ROUND ARM INSTALLATION KIT

DoorKing Part Number

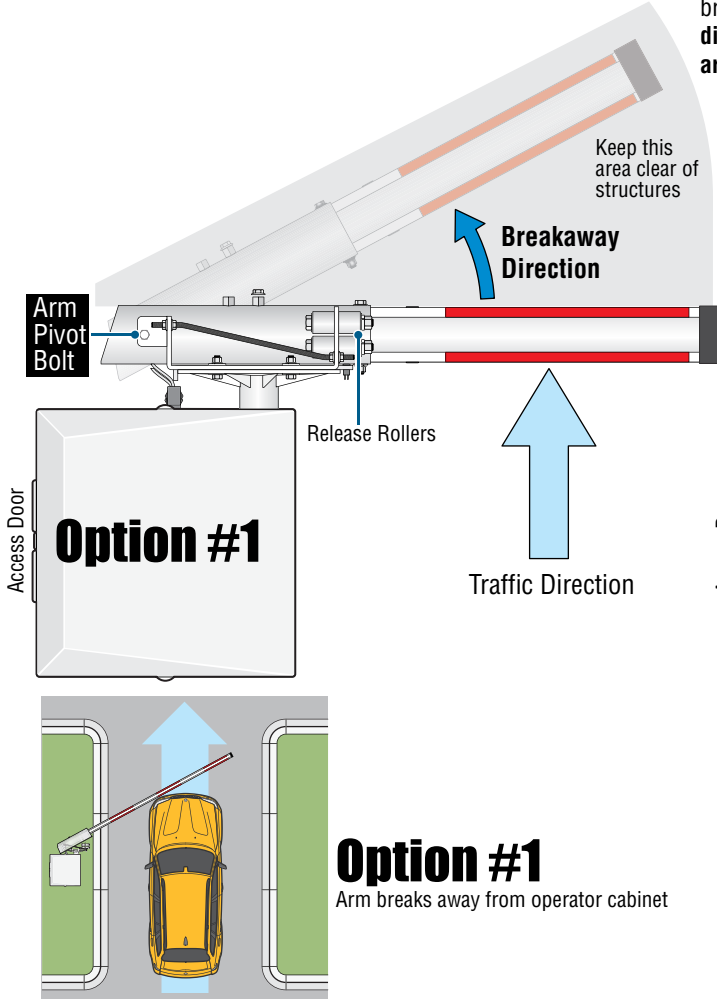
1601-285

This kit is designed for a 1601 barrier gate operator **ONLY**. It **CANNOT** be used with 1602 or 1603 operators. The kit provides a breakaway bracket assembly for a **round arm**.

If the arm is struck and breaks away (pivots in **ONE DIRECTION ONLY**, see below), gate operator will automatically shut down. The arm manually snaps back into the release rollers to function normally again.

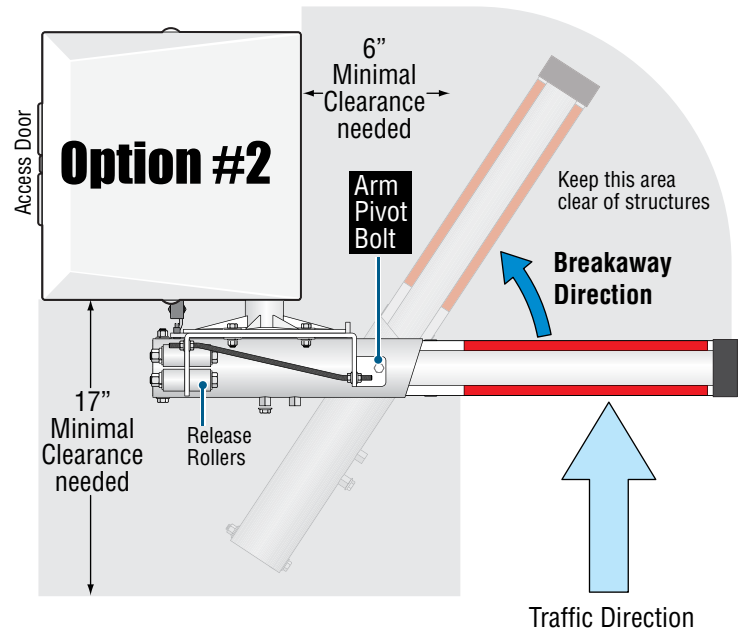
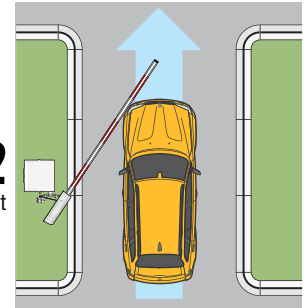
Breakaway Arm Direction Options

Arm will only pivot in **ONE DIRECTION** depending on which way the breakaway arm bracket is installed. **Choose the desired breakaway direction** and install breakaway arm bracket accordingly (note position of arm pivot bolt and release rollers).



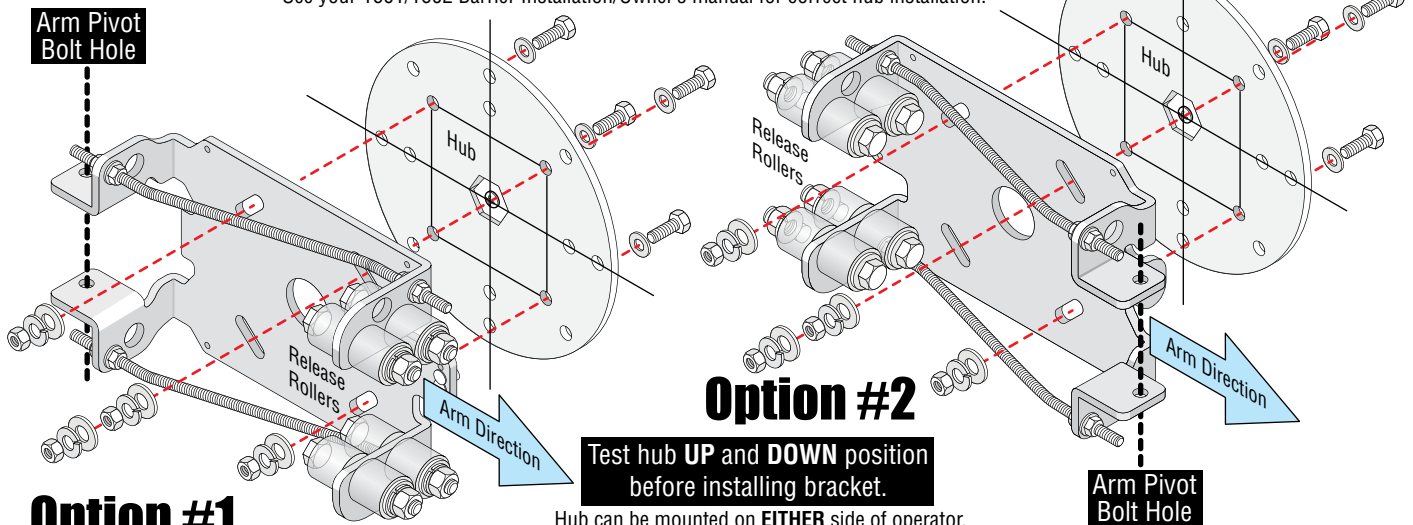
Option #2

Arm breaks towards operator cabinet



Install Bracket

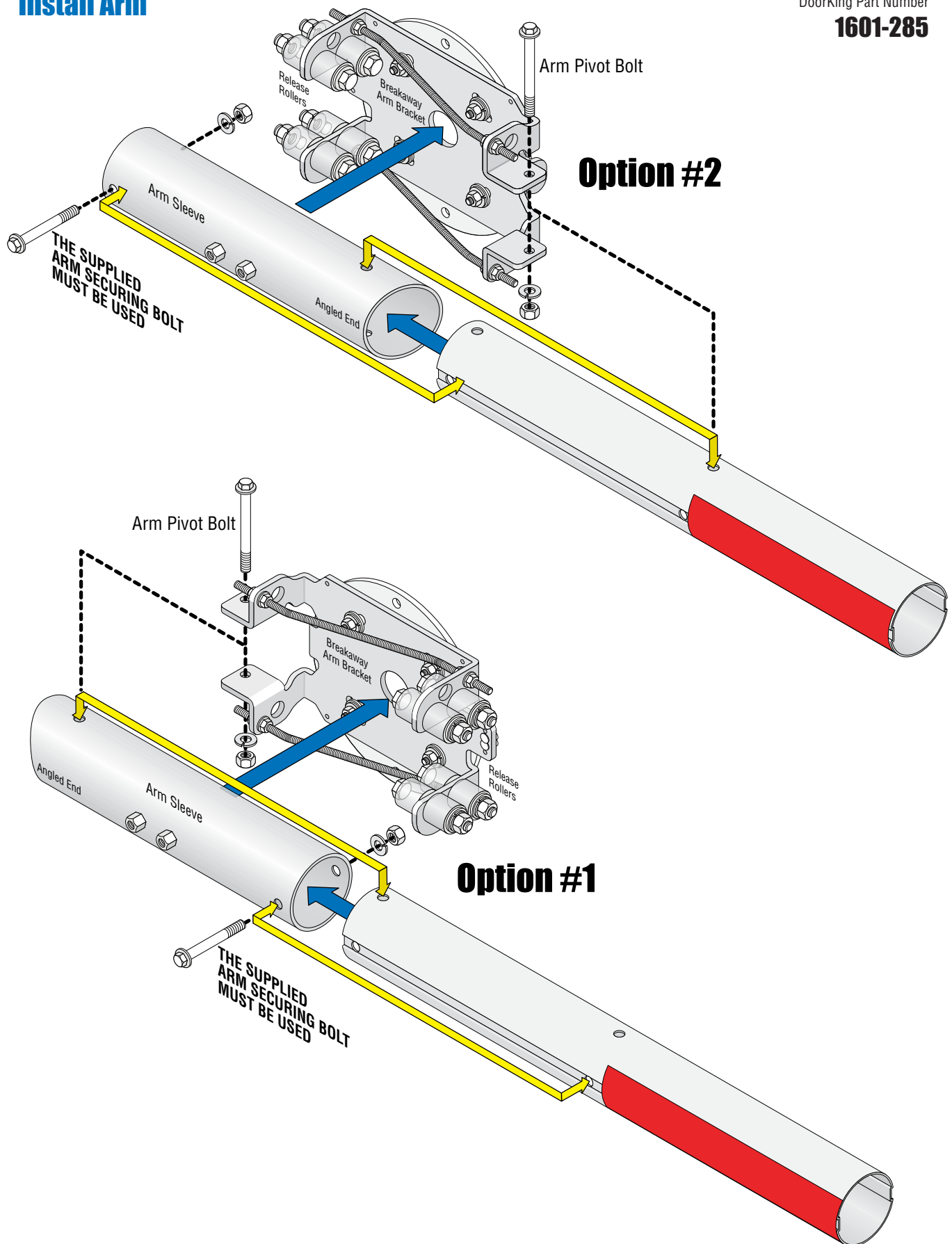
Hub **MUST** already be installed on gate operator. See your 1601/1602 Barrier Installation/Owner's manual for correct hub installation.



Install Arm

DoorKing Part Number

1601-285



Install Harness (8080-356)

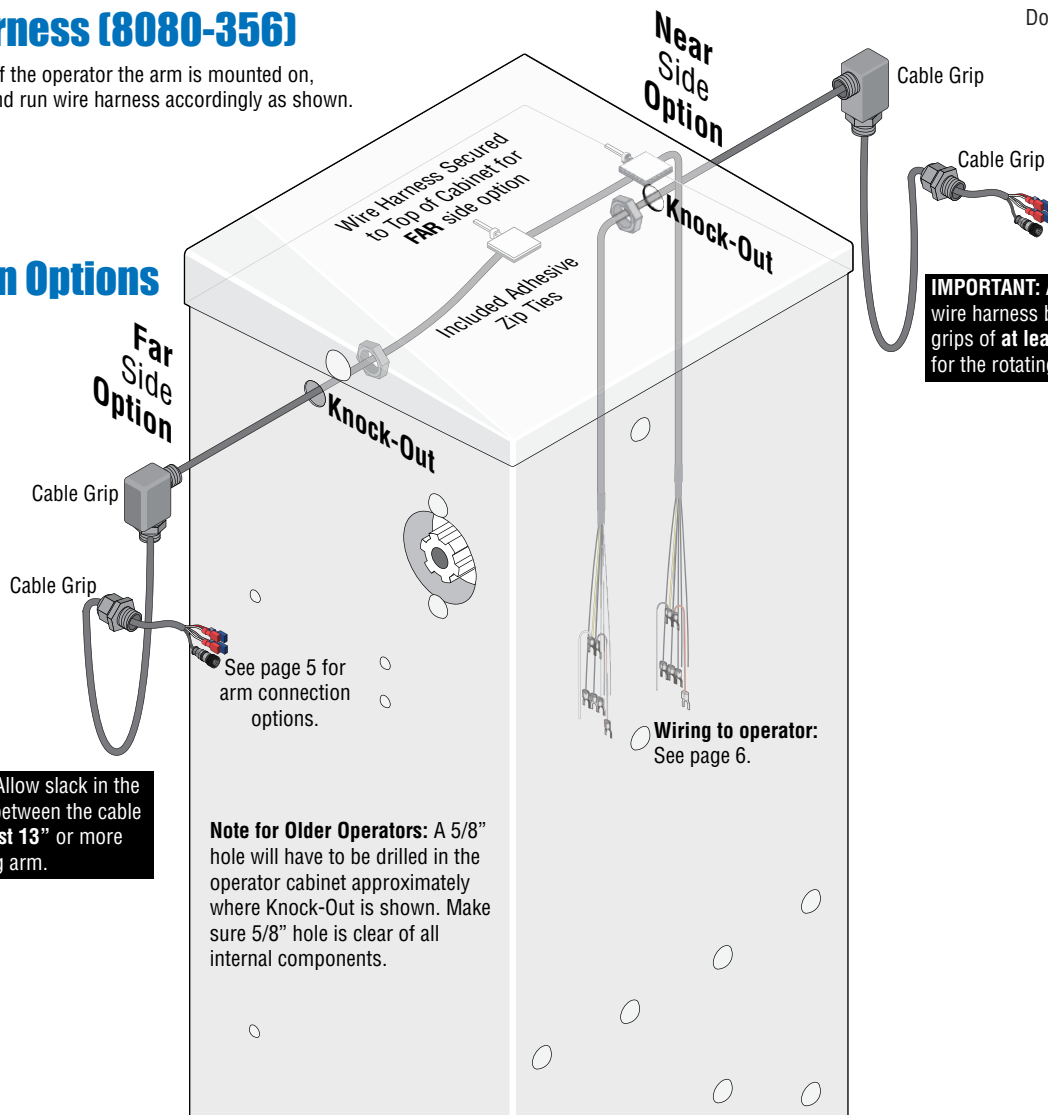
Choose which side of the operator the arm is mounted on, remove knock-out and run wire harness accordingly as shown.

DoorKing Part Number

1601-285

Cable Run Options

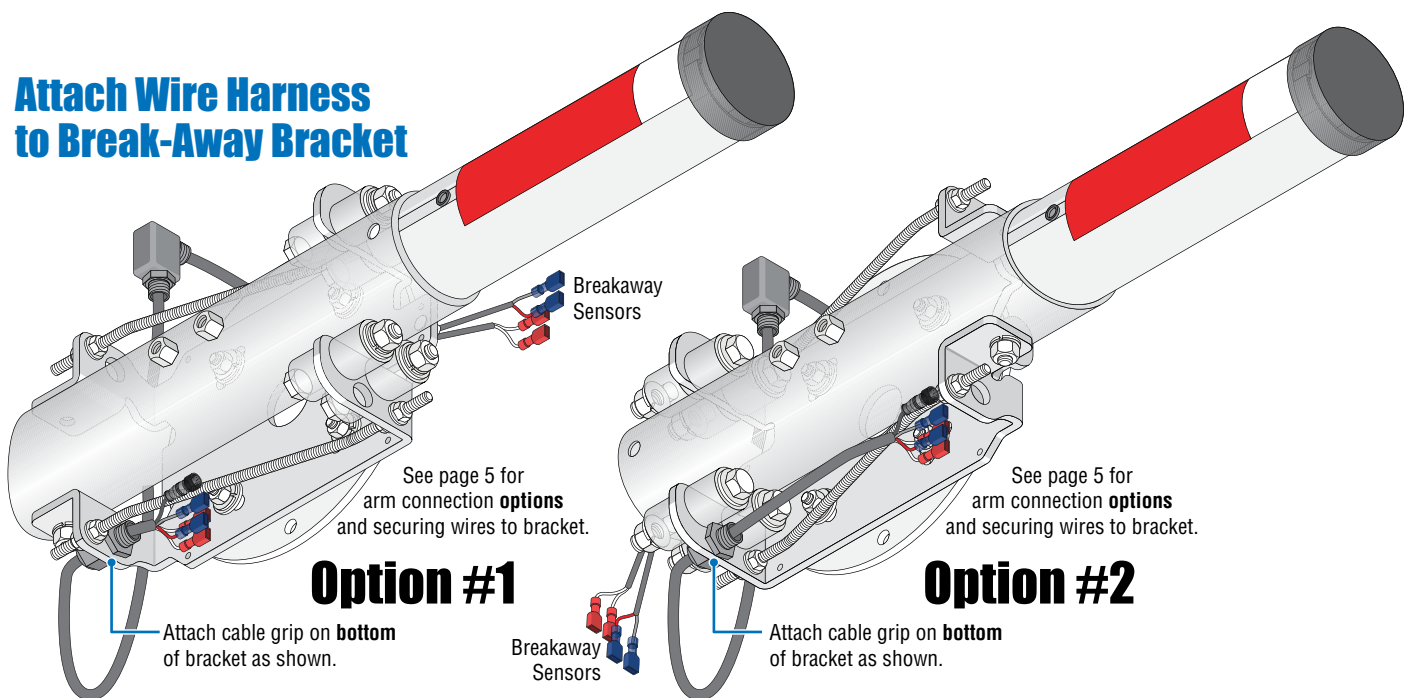
IMPORTANT: Allow slack in the wire harness between the cable grips of **at least 13"** or more for the rotating arm.



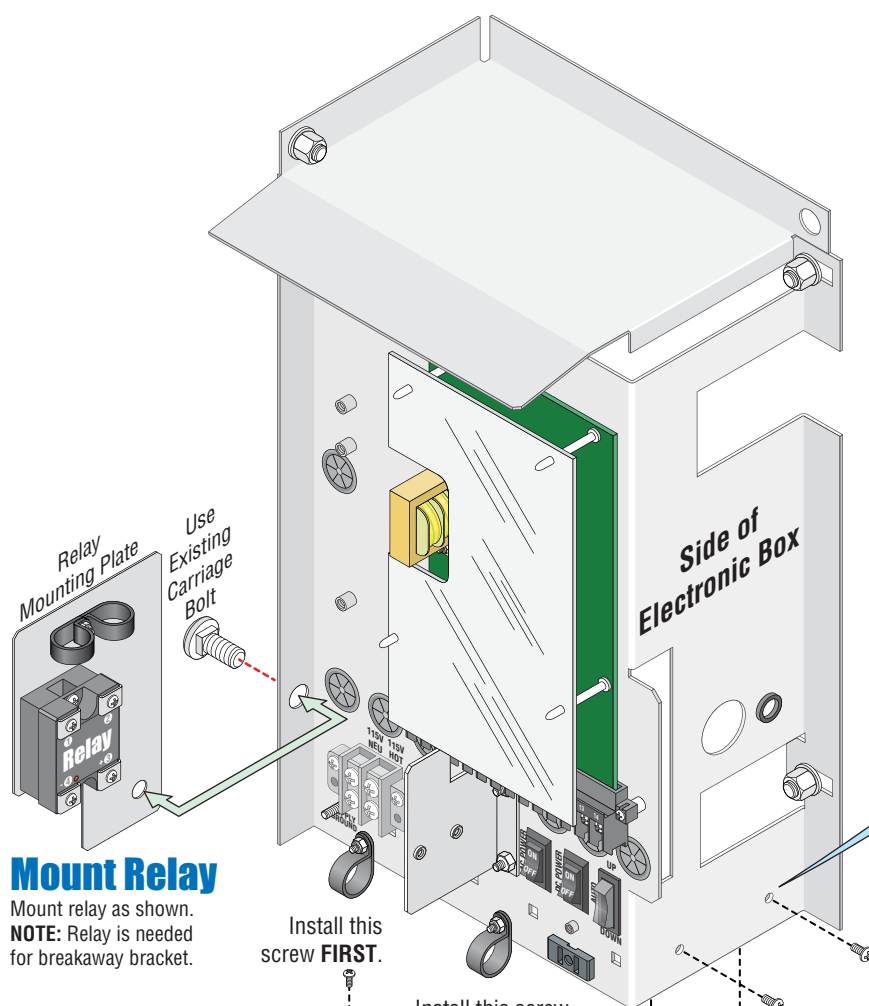
IMPORTANT: Allow slack in the wire harness between the cable grips of **at least 13"** or more for the rotating arm.

Note for Older Operators: A 5/8" hole will have to be drilled in the operator cabinet approximately where Knock-Out is shown. Make sure 5/8" hole is clear of all internal components.

Attach Wire Harness to Break-Away Bracket



Mount Power Supply and Relay

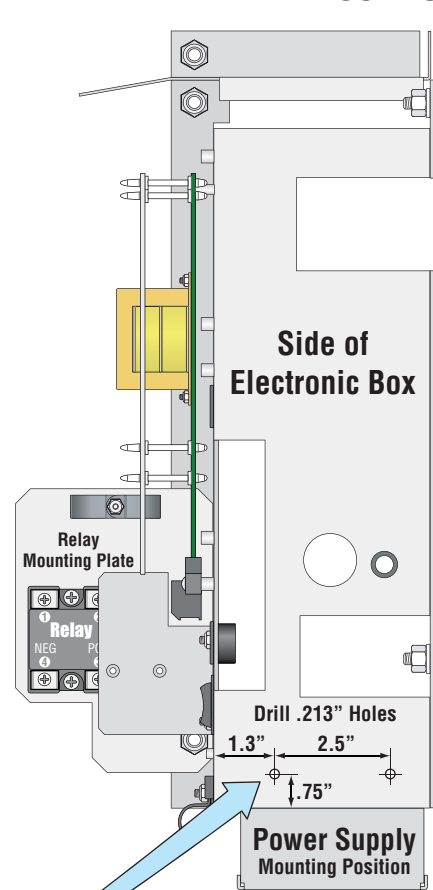


Mount Relay

Mount relay as shown.
NOTE: Relay is needed for breakaway bracket.

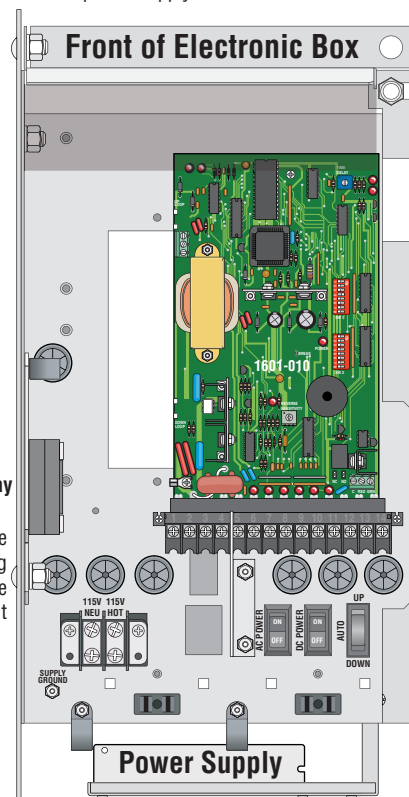
Mount Power Supply

IMPORTANT: Power supply **MUST** be wired **BEFORE** mounting it as shown. See page 6.



Drill Hole Positions

Drill holes in positions shown to mount power supply to side of electronic box.

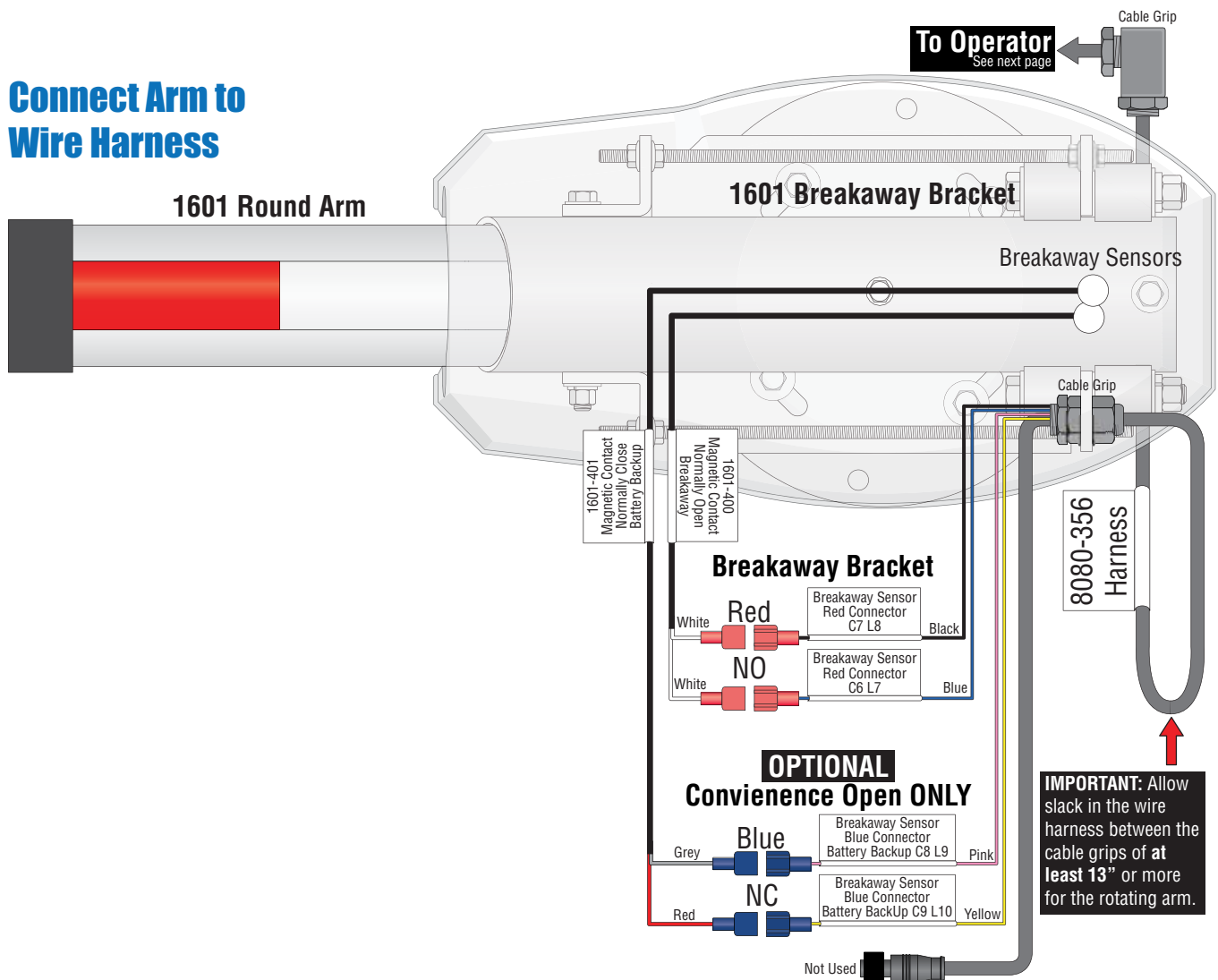


1601 Round Breakaway Arm - Arm Connection

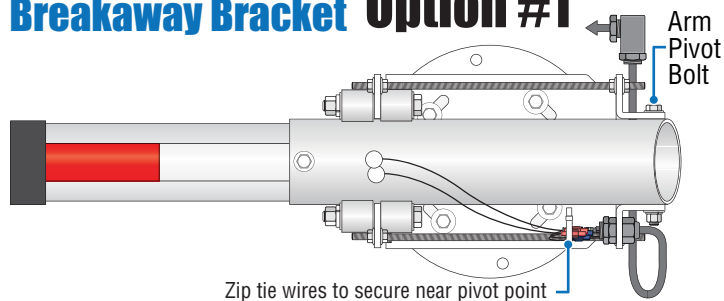
DoorKing Part Number
1601-285

MAKE SURE ALL POWER IS TURNED OFF TO OPERATOR!

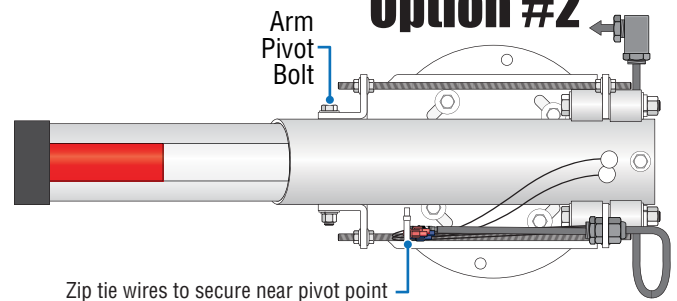
Connect Arm to Wire Harness



Secure Wires to Breakaway Bracket Option #1



Option #2



IMPORTANT: To secure wires to bracket, allow for some slack in the wires to account for the arm pivoting when arm "Breaks Away" from bracket. Test breakaway feature to **make sure** there is enough slack in the wires when securing wires.

Breakaway Arm Reset Procedure

If arm gets struck and breaks away, gate operator will automatically shut down (Breakaway sensors are tripped). Simply snap arm back into the release rollers. Make sure all wires are out of the way of the arm when snapping arm back in position. Normal operation can then continue.

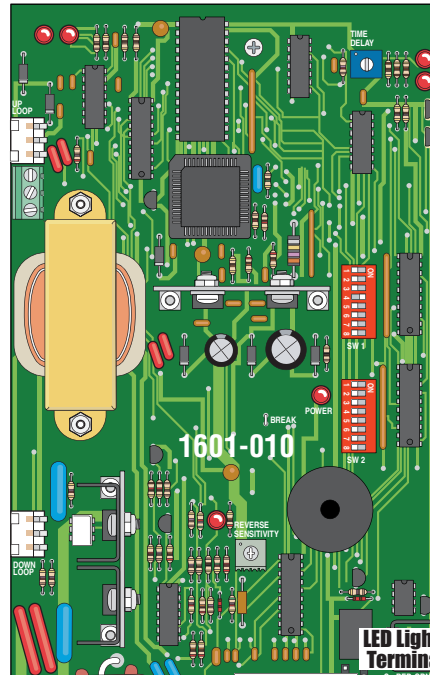
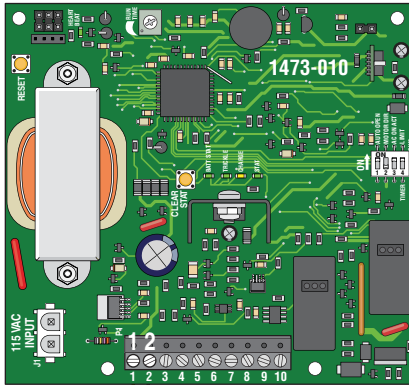
DO NOT OPERATE ARM WITHOUT BREAKAWAY SENSORS FUNCTIONING.

1601 Round Breakaway Arm - Wiring Operator

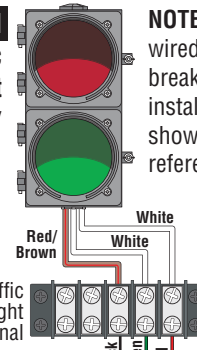
MAKE SURE ALL POWER IS TURNED OFF TO OPERATOR!

OPTIONAL Convenience Open 1473

NOTE: Will **NOT** work with older model 2340-010 convenience open board



Optional LED Traffic Light Kit
Sold Separately



NOTE: The traffic light is wired together with the break-away arm in some installations, so it's shown here for wiring reference. See Traffic Light manual 1603-264 for more info when used.

