

# STANDARD ARM BRACKET HARDWARE KITS

These kits are designed for all 1600 barrier gate operators. A reversing edge with **OR** without Red/Green LEDs for a **octagon** arm is sold separately and is **HIGHLY** recommended for safety.

DoorKing Part Numbers:

**1601-235**

Octagon Arm **WITH**  
Reverse Edge Hardware Kit

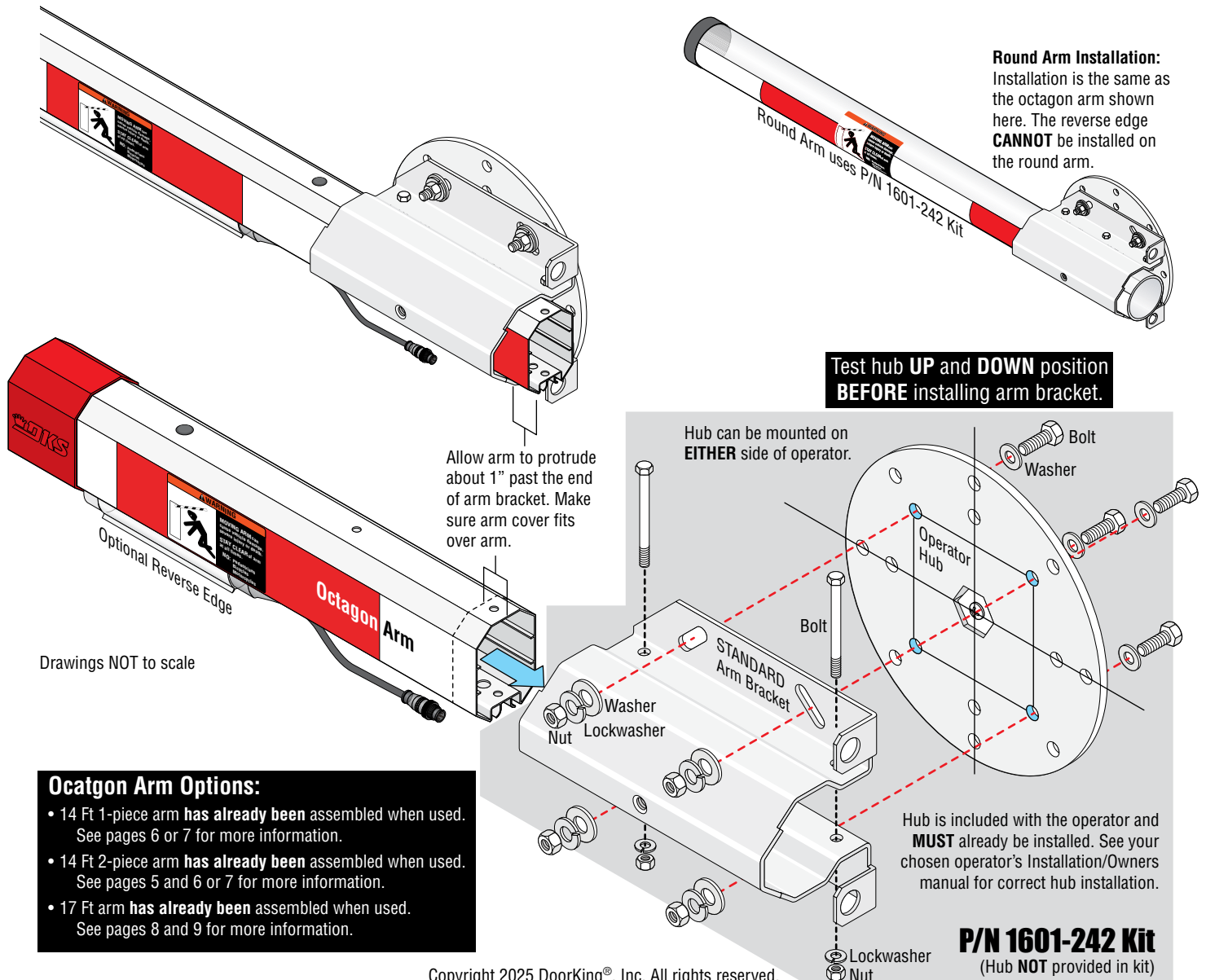
**1601-242**

Octagon/Round Arm **WITHOUT**  
Reverse Edge Hardware Kit

## STANDARD Octagon Arm Bracket Installation Steps:

1 Install Standard Arm Bracket on Operator Hub (For 1601-242 kit or 1601-235 kit)	1
2 Install Wire Harness (ONLY when using 1601-235 kit)	2
3 Cable Run Options (ONLY when using 1601-235 kit)	2
4 Attach Wire Harness to Standard Bracket (ONLY when using 1601-235 kit)	2
5 Mount Power Supply (ONLY when using 1601-235 kit)	3
6 Octagon Arm - Wiring to Operator (ONLY when using 1601-235 kit)	4
• 14 Ft 2-Piece Arm Assembly (Optional) (Sold Separately)	5
• 14 Ft Reverse Edge / Red Green LED Installation (Optional) (Sold Separately)	6
• 14 Ft Rubber Bumper Installation (Optional) (Sold Separately)	7
• 17 Ft Octagon Arm Assembly for a 1602 ONLY (Optional) (Sold Separately)	8
• 15 Ft Reverse Edge / Red Green LED Installation on 17 Ft Arm ONLY (Optional) (Sold Separately)	9
Older Existing Arm Plastic Cover Modification (If Necessary)	10

## 1 Install Standard Arm Bracket on Operator Hub



Copyright 2025 DoorKing®, Inc. All rights reserved.

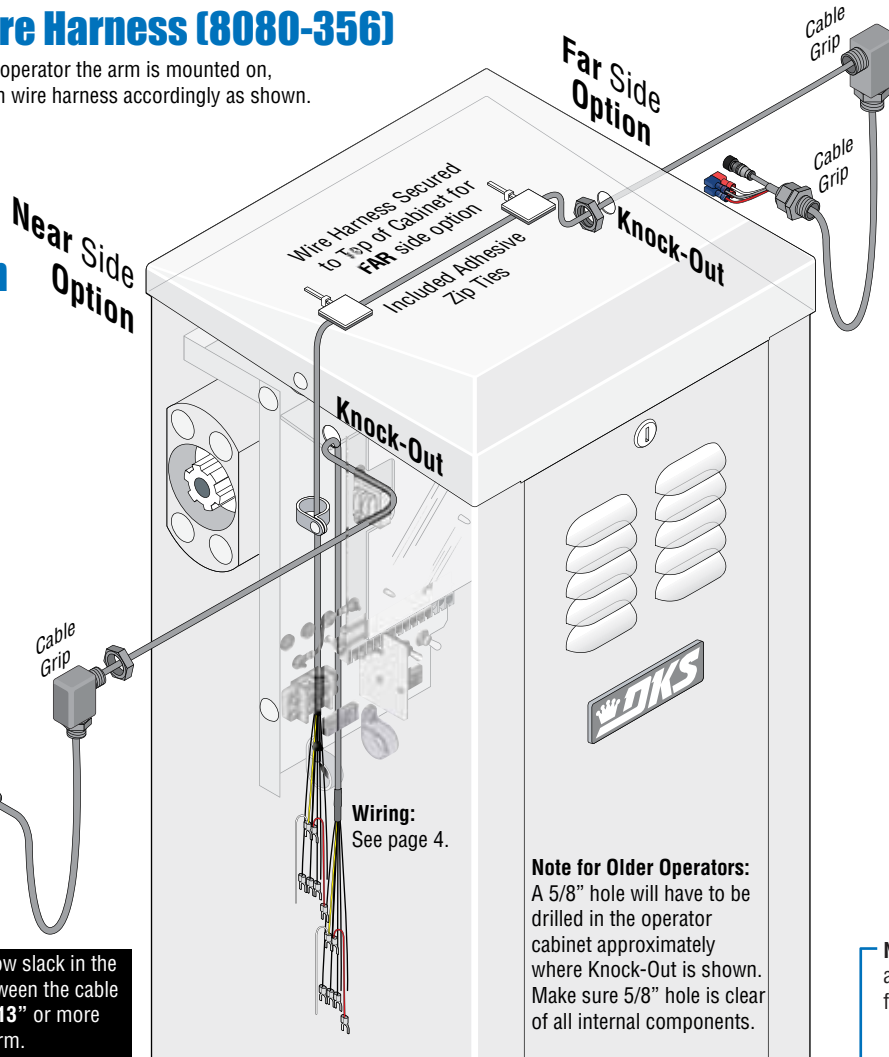
## 2 Install Wire Harness (8080-356)

Choose which side of the operator the arm is mounted on, remove knock-out and run wire harness accordingly as shown.

## 3 Cable Run Options

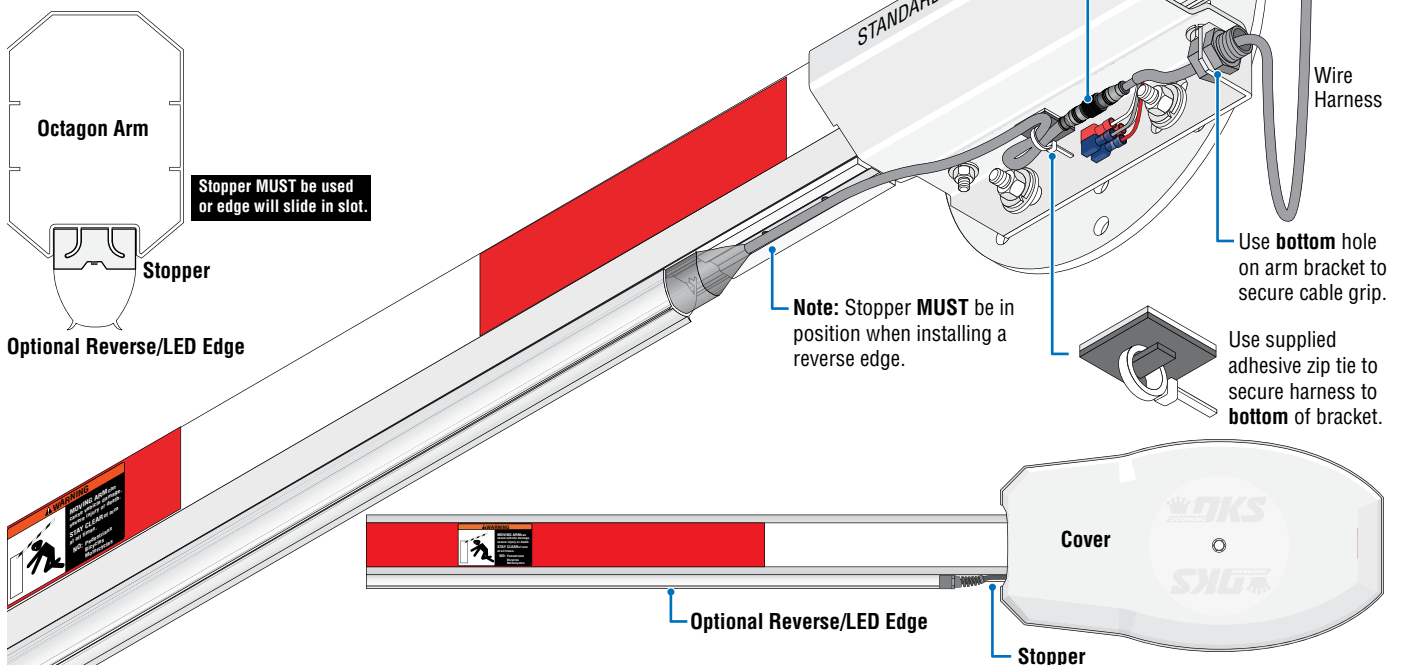
See page 4 for arm connection options.

**IMPORTANT:** Allow slack in the wire harness between the cable grips of **at least 13"** or more for the rotating arm.

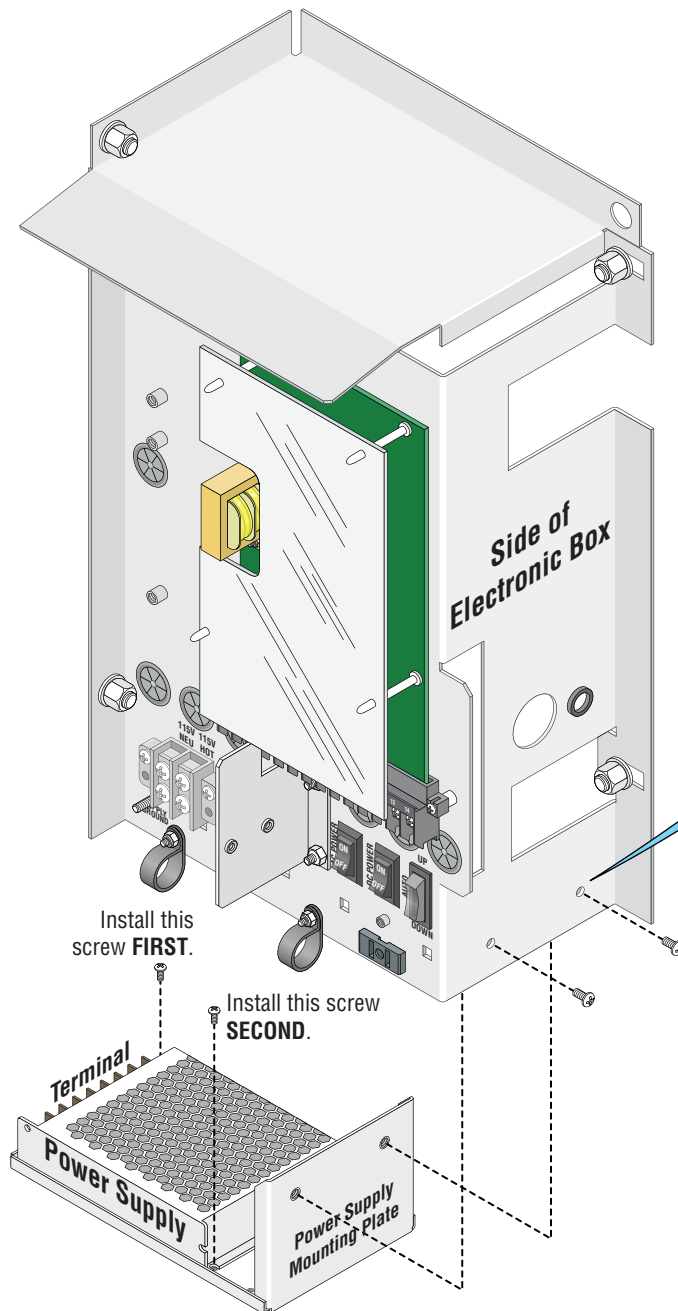


**IMPORTANT:** Allow slack in the wire harness between the cable grips of **at least 13"** or more for the rotating arm.

## 4 Attach Wire Harness to STANDARD Bracket

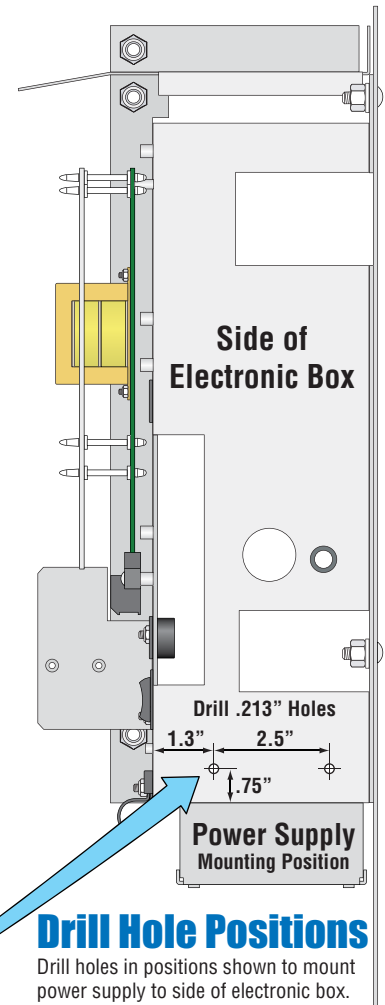


## 5 Mount Power Supply



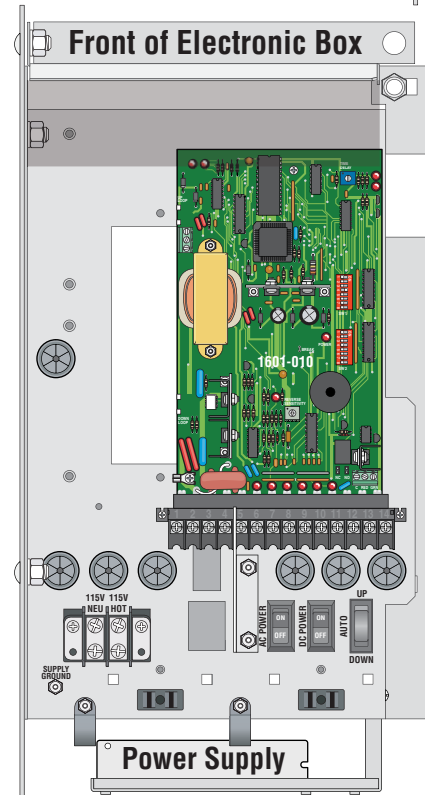
### Mount Power Supply

**IMPORTANT:** Power supply **MUST** be wired **BEFORE** mounting it as shown. See next page.

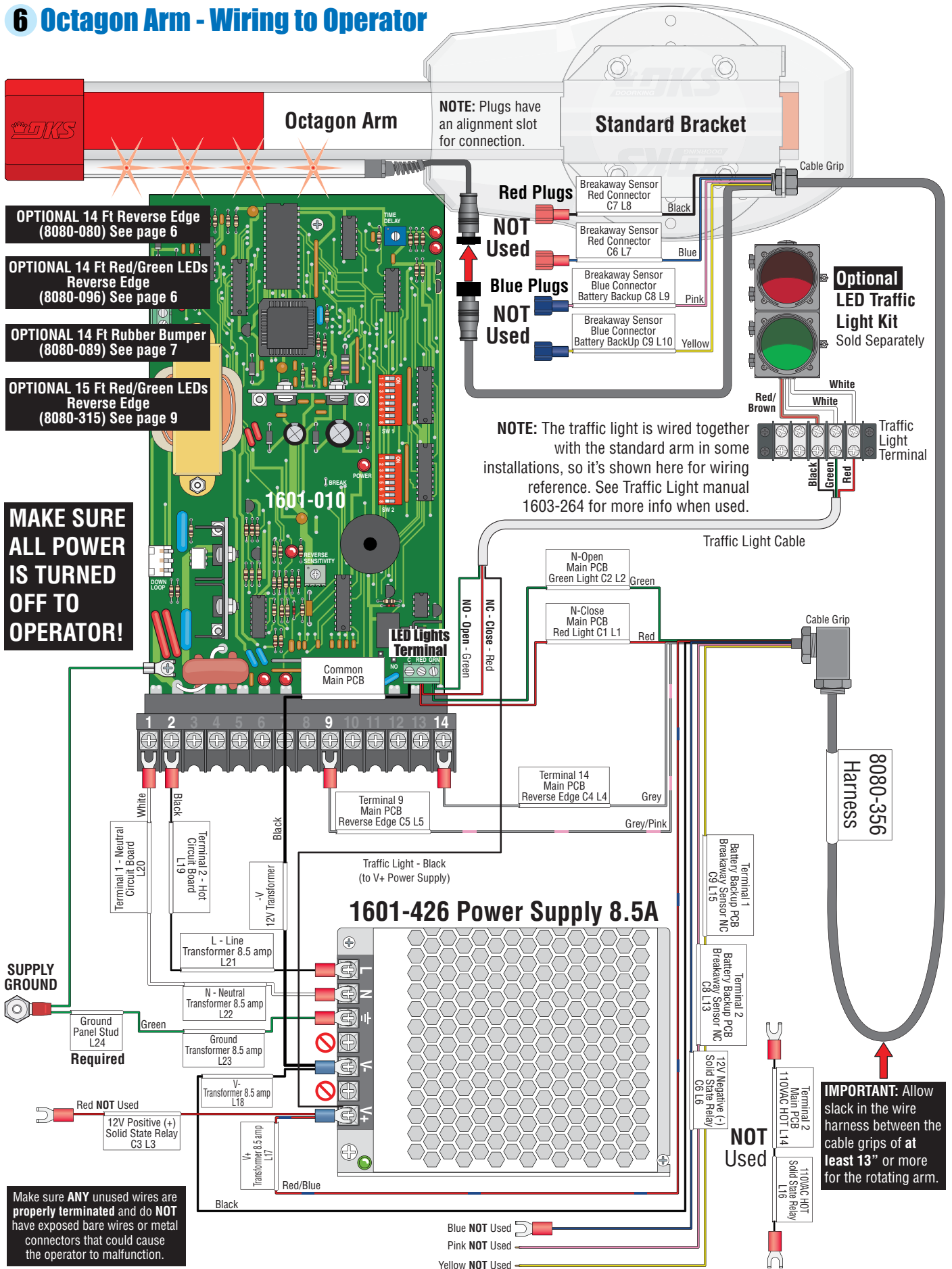


### Drill Hole Positions

Drill holes in positions shown to mount power supply to side of electronic box.



## 6 Octagon Arm - Wiring to Operator



# 14 Ft 2-Piece Octagon Arm Assembly

DoorKing Part Number

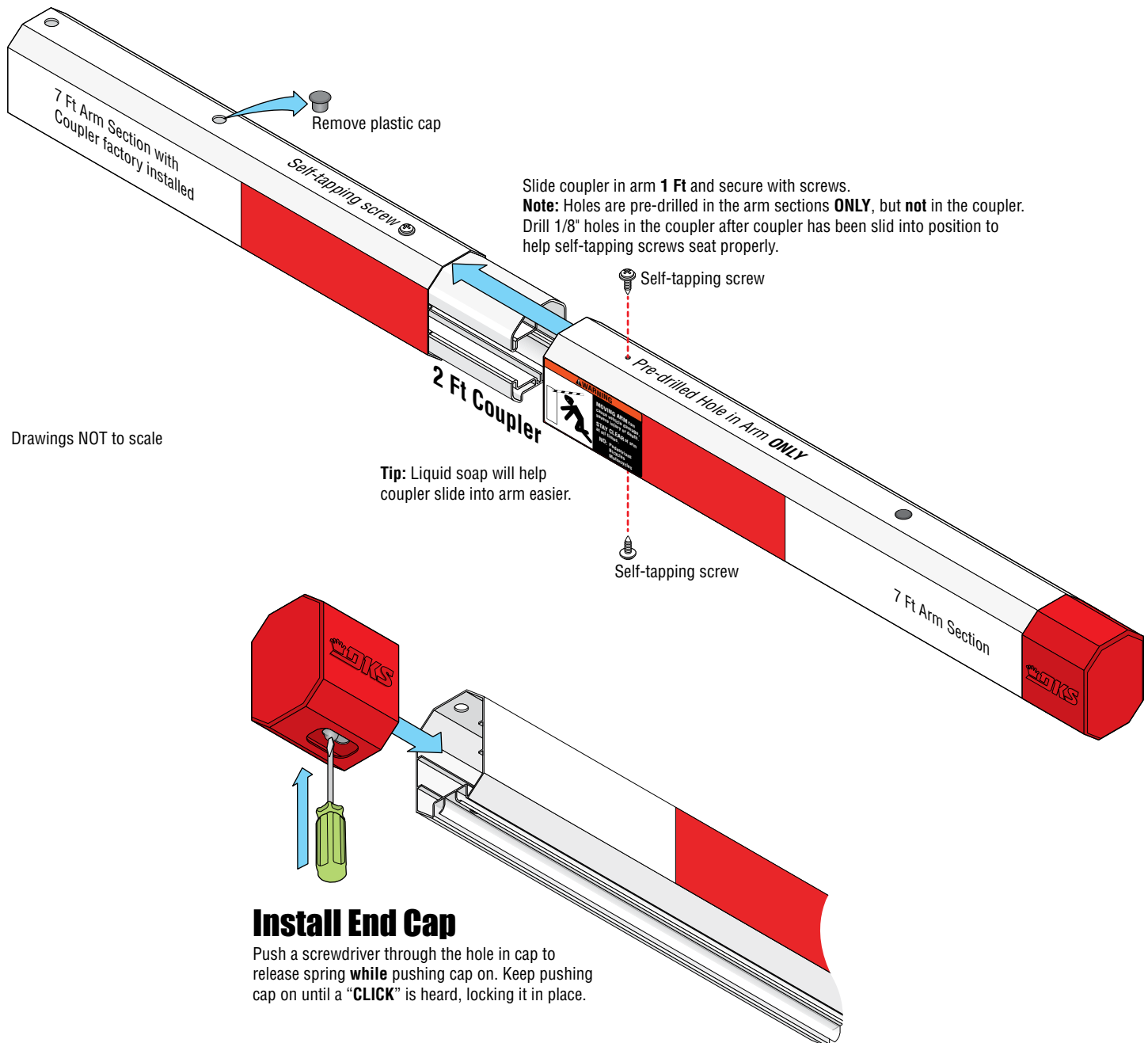
**1601-567**

14 Ft 2-Piece Octagon Arm Kit

This kit is designed for use on a 1601 or 1603 barrier gate operators **ONLY**. It has 2-7 ft arm sections that assemble into a 14 ft arm.

A reverse edge can be installed on this arm. It is sold separately but **highly recommended** for safety, see next page.

## Assemble 2-Piece Arm



Drawings NOT to scale



# 14 Ft Reverse Edge / Red Green LED Installation

DoorKing Part Numbers

**8080-080**

14 Ft Reverse Edge

**8080-096**

14 Ft Reverse Edge + Red/Green LED

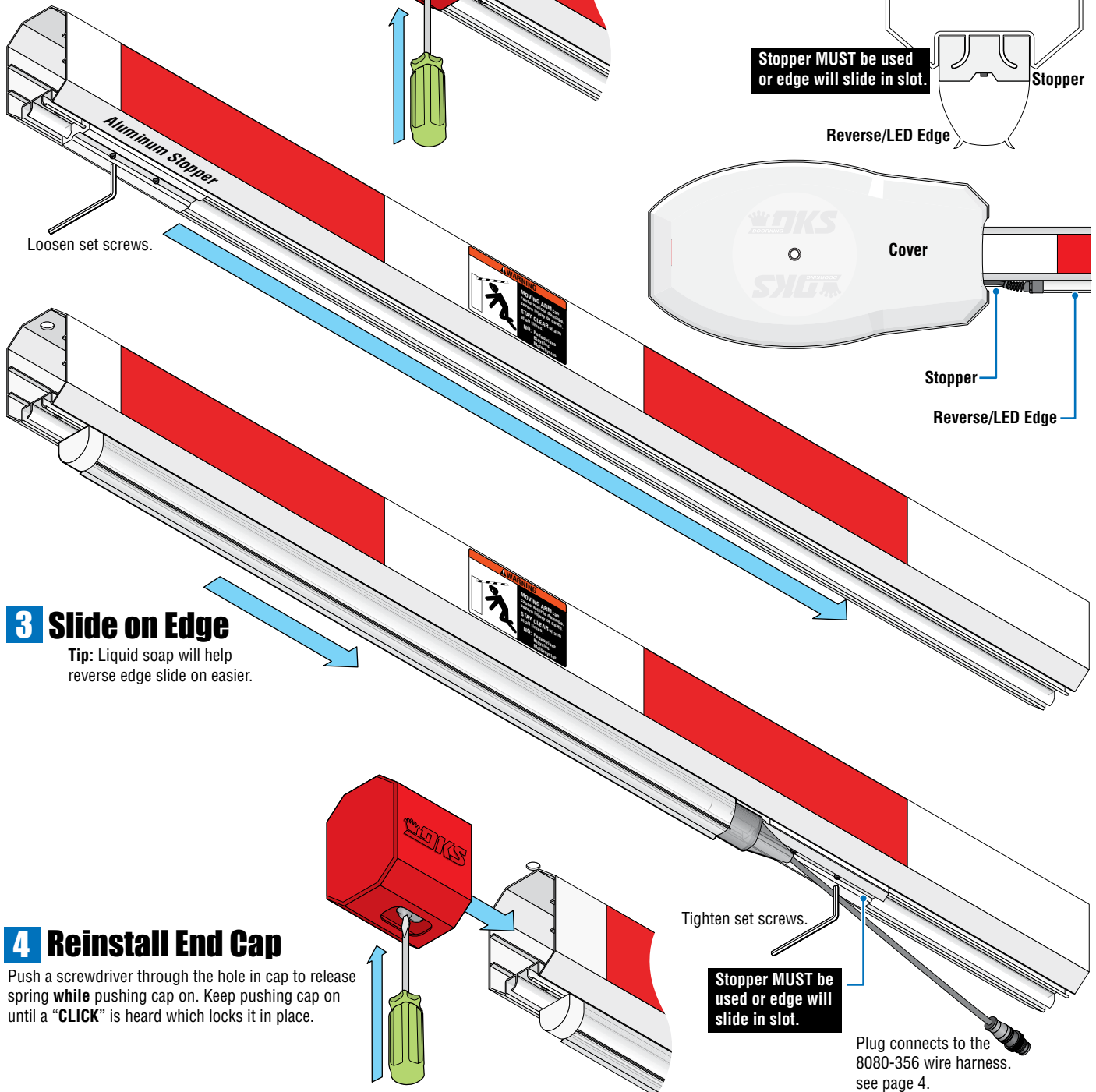
This kit is designed to install on a 14 ft 1-piece or 2-piece **octagon arm** for a 1601/1603 barrier gate operator. It **CANNOT** be used with a 1602 operator.

**Note:** DO NOT operate arm with a malfunctioning reverse edge.

## Installation

Drawings NOT to scale

### 2 Slide on Stopper



# 14 Ft Rubber Bumper Installation

DoorKing Part Number

**8080-089**

14 Ft Rubber Bumper

This rubber bumper is designed to install on a 14 ft 1-piece or 2-piece **octagon arm** (not included) for a 1601/1603 barrier gate operator.

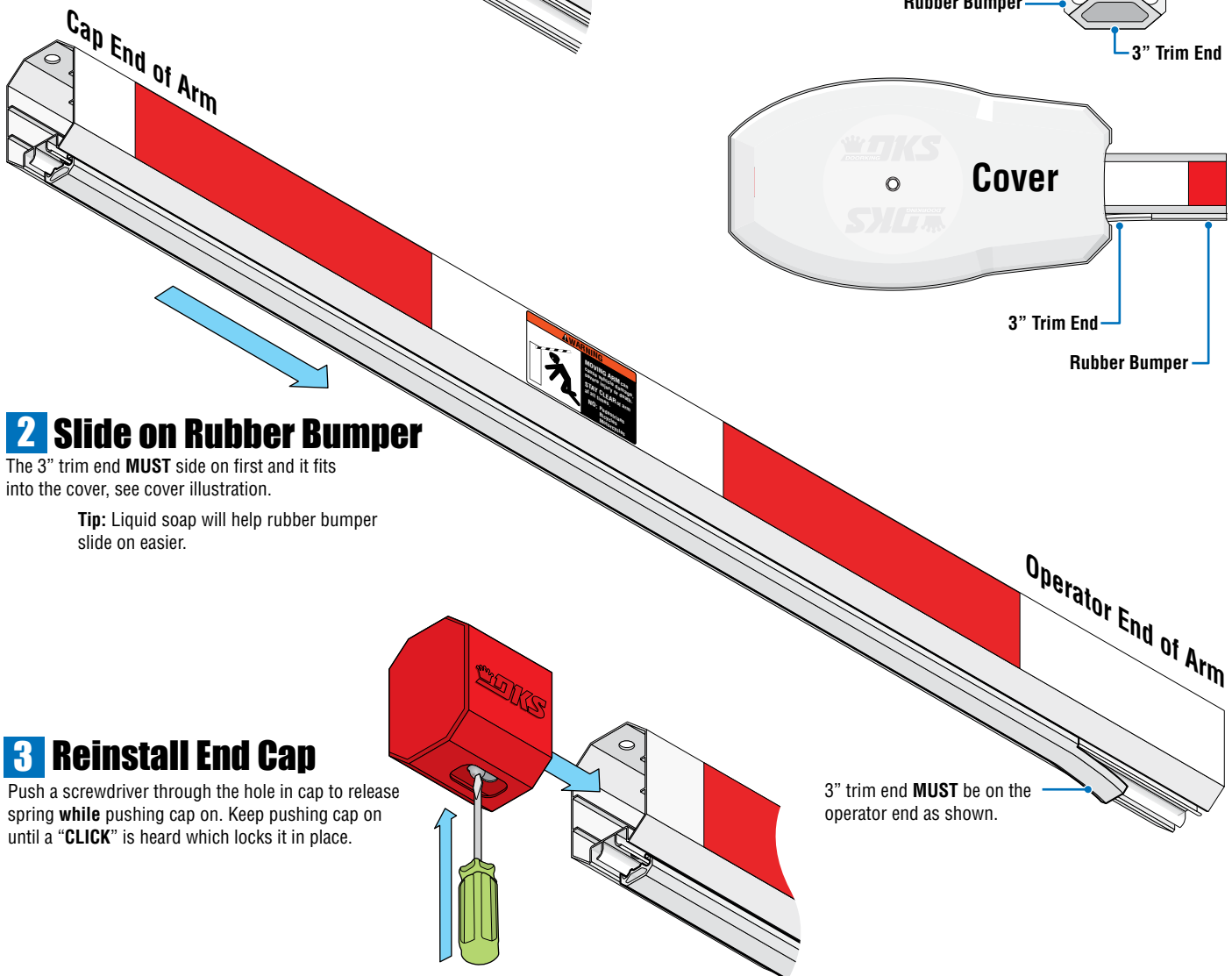
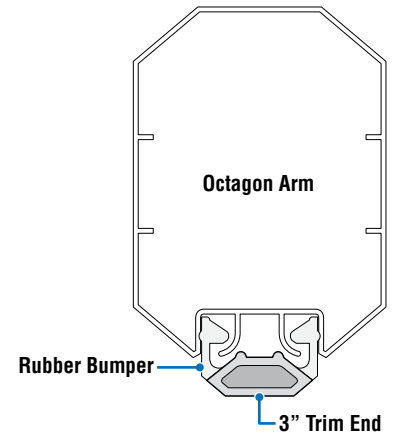
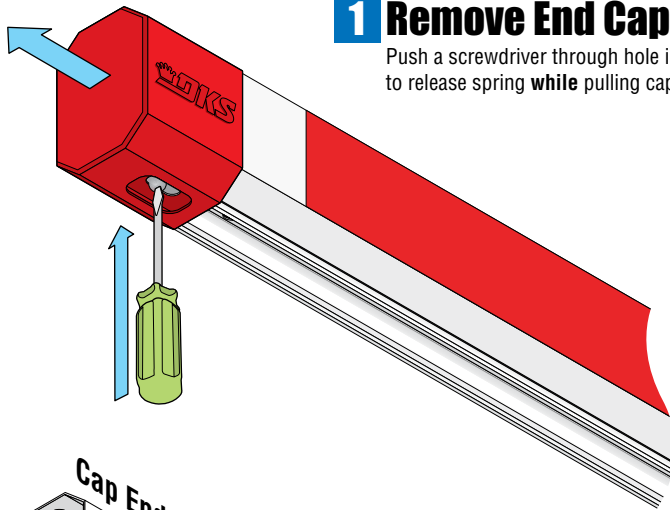
It **CANNOT** be used with a 1602 operator.

## Installation

Drawings NOT to scale

### 1 Remove End Cap

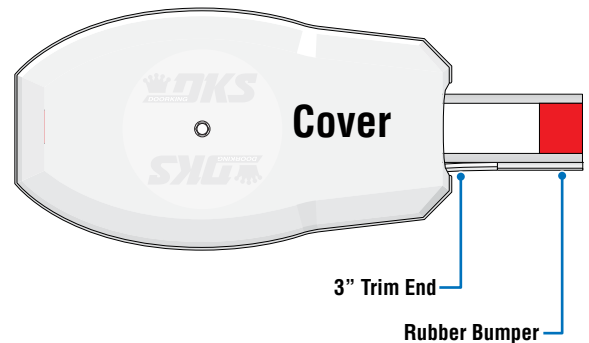
Push a screwdriver through hole in bottom of end cap to release spring **while** pulling cap off.



### 2 Slide on Rubber Bumper

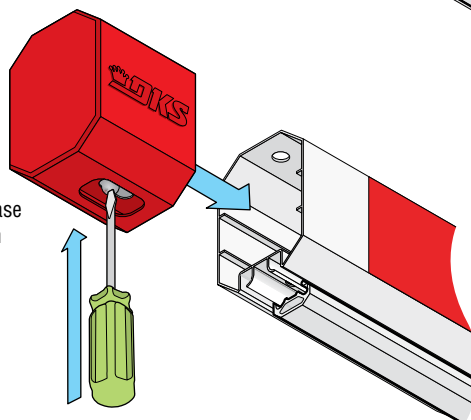
The 3" trim end **MUST** side on first and it fits into the cover, see cover illustration.

**Tip:** Liquid soap will help rubber bumper slide on easier.



### 3 Reinstall End Cap

Push a screwdriver through the hole in cap to release spring **while** pushing cap on. Keep pushing cap on until a "**CLICK**" is heard which locks it in place.



3" trim end **MUST** be on the operator end as shown.

# 17 Ft Octagon Arm Assembly for a 1602 ONLY

DoorKing Part Numbers:

**1602-303**

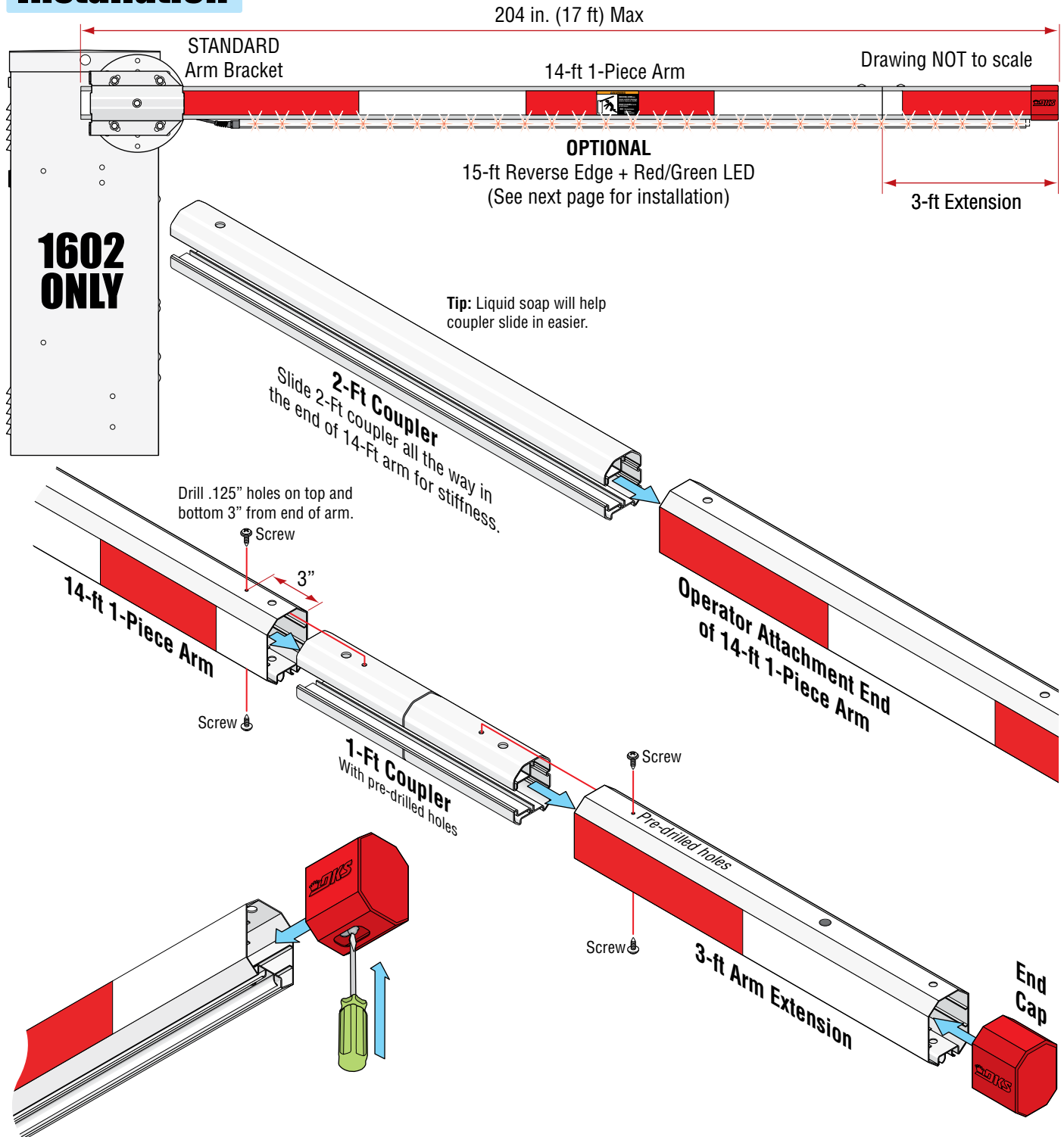
Octagon Arm 3-ft Extension Kit

**8080-315**

15-ft Reverse Edge + Red/Green LED  
(Sold Separately  
See next page)

This kit is designed for a **1602** barrier gate operator **ONLY**. It **CANNOT** be used with 1601 barrier **OR** 1603 auto-spikes barrier operators. It will extend a 14 ft octagonal arm an **extra three feet**. The reverse edge is sold separately but **highly recommended** for safety when lowering this very long arm.

## Installation



### Install End Cap

Push a screwdriver through the hole in cap to release spring **while** pushing cap on. Keep pushing cap on until a "**CLICK**" is heard, locking it in place.



# 15 Ft Reverse Edge / Red Green LED Installation on 17 Ft Arm ONLY

DoorKing Part Number:

**8080-315**

15-ft Reverse Edge + Red/Green LED  
(Sold Separately)

This edge will **ONLY** fit on a 14-ft octagon arm with the **3-ft extension** installed on it.

**Note:** DO NOT operate arm with a malfunctioning reverse edge.

## Installation

Drawings NOT to scale

### 2 Slide on Stopper

Loosen set screws.

### 1 Remove End Cap

Push a screwdriver through hole in bottom of end cap to release spring while pulling cap off.

Stopper MUST be used or edge will slide in slot.

Reverse/LED Edge

Cover

Push stopper against reverse edge and tighten it so edge does NOT slide in slot.

### 3 Slide on Edge

**Tip:** Liquid soap will help reverse edge slide on easier.

### 4 Reinstall End Cap

Push a screwdriver through the hole in cap to release spring while pushing cap on. Keep pushing cap on until a "CLICK" is heard which locks it in place.

Tighten set screws.

Stopper MUST be used or edge will slide in slot.

Plug connects to the 8080-356 wire harness. see page 4.

## Older Existing Arm Cover

Older existing plastic arm cover will need to have a notch cut out for the reverse edge. Only one side of the cover will need to be cut out depending on which side of the operator the arm is mounted on. Use this template as a guide to remove material from the cover.

