

1601 MANUAL RELEASE KIT

DoorKing Part Number

1601-270

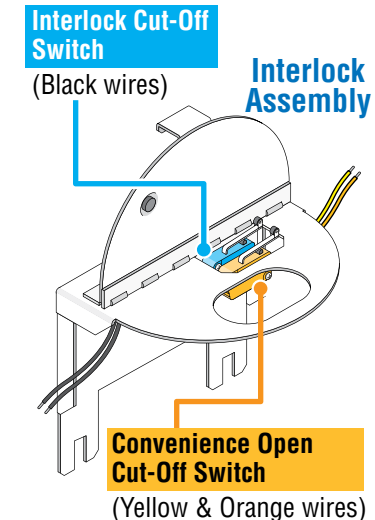
This kit is designed for the 1601 barrier gate operator **WITH** or **WITHOUT** the **Convenience Open** and/or **Break-Away Arm** options. It provides interlock and convenience open cut-off switches to shut-off **ALL** power when **manually cranking** the arm **UP** or **DOWN**.

Kit Includes: Interlock assembly, Double motor pulley, Crank tool, 2 spring clips with locknuts.

Choose YOUR Operator Setup: Page:

- A Standard Operator** _____ 1
- B ONLY Break-Away Arm** _____ 2
- C Convenience Open & Break-Away Arm** _____ 3
- D ONLY Convenience Open** _____ 4

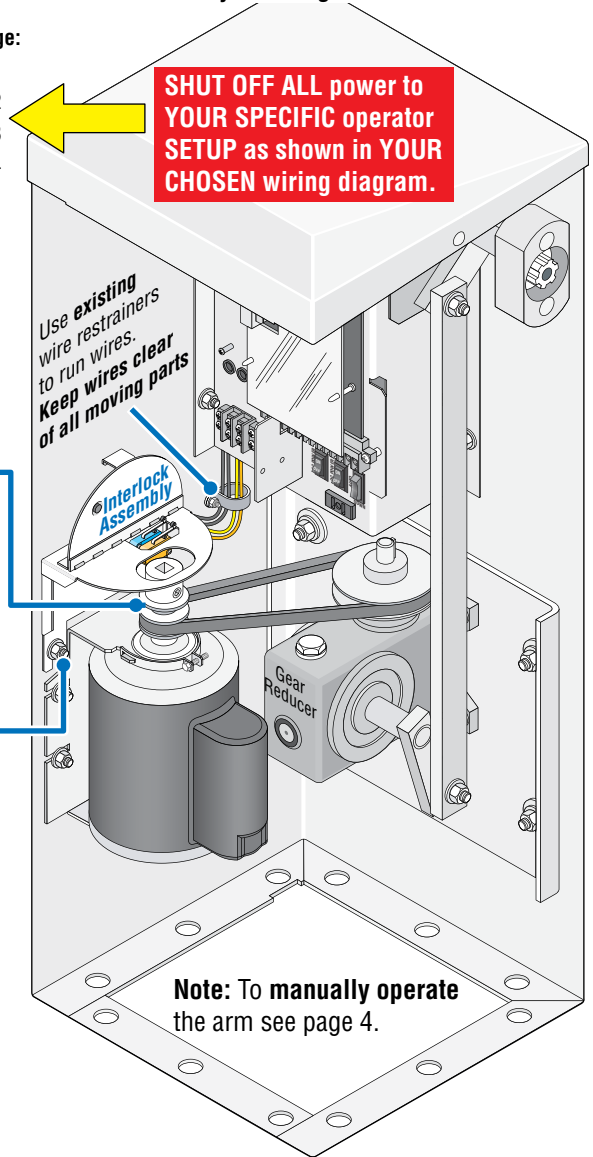
Install Interlock Assembly and Crank Tool



Mount spring clips with locknuts on **existing** threaded studs inside access door.
Spring Clip and Locknut x 2

Replace existing single motor pulley with double motor pulley. **Align** motor pulley with gear reducer pulley.

Mount interlock assembly using **existing** carriage bolts in operator cabinet.

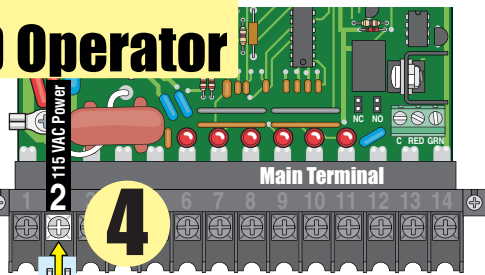


Wiring a: STANDARD Operator

NO Convenience Open
NO Break-Away Arm

DANGER
HIGH VOLTAGE!

115 VAC Input Power Terminal



4 CONNECT Interlock Cut-Off switch wire to Main Term #2.

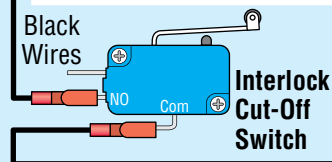
Note: Convenience open cut-off switch is **NOT** used.

Make sure **ANY** unused wires are **properly terminated** and do **NOT** have exposed bare wires or metal connectors that could cause the operator to malfunction.

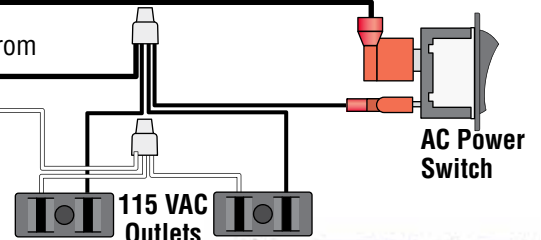
SHUT-OFF POWER!
SHUT OFF the AC input power to the operator from the circuit breaker.



2 DISCONNECT Existing Black Wire from #2 Main Terminal



3 RE-CONNECT existing black wire to Interlock Cut-Off Switch wire.



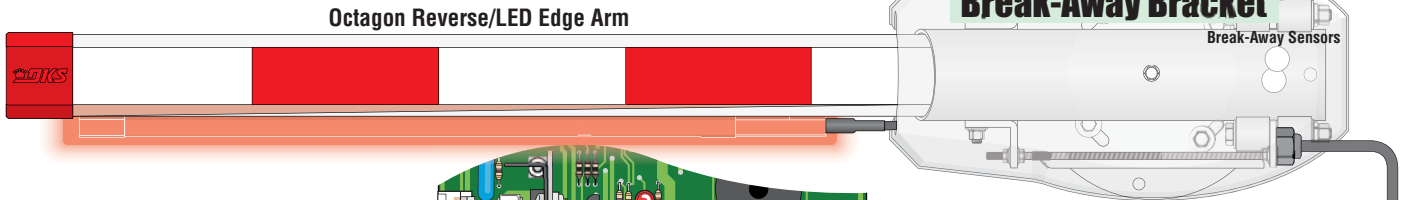
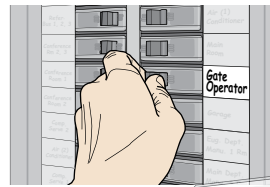
Wiring a Barrier Operator with: ONLY Break-Away Arm

NO Convenience Open

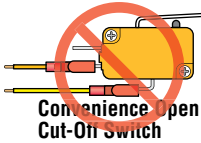
SHUT-OFF POWER!

SHUT OFF the AC input power to the operator from the circuit breaker.

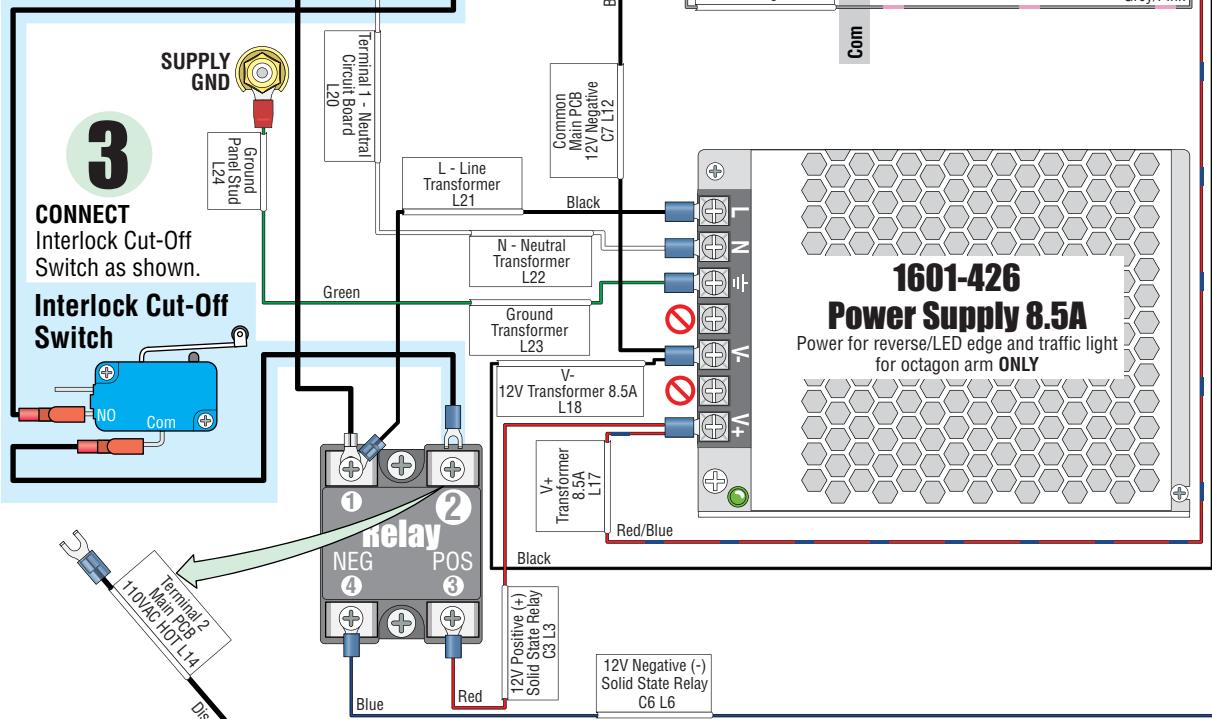
1



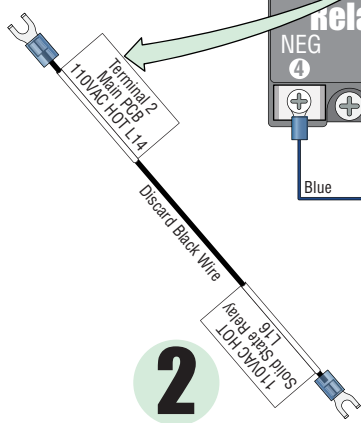
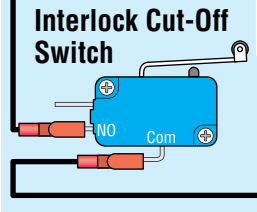
Make sure ANY unused wires are properly terminated and do NOT have exposed bare wires or metal connectors that could cause the operator to malfunction.



Note: Convenience open cut-off switch is NOT used.



3
CONNECT Interlock Cut-Off Switch as shown.



ALL extra wiring shown for reference ONLY and remain in place

NOT Used Pink
NOT Used Yellow

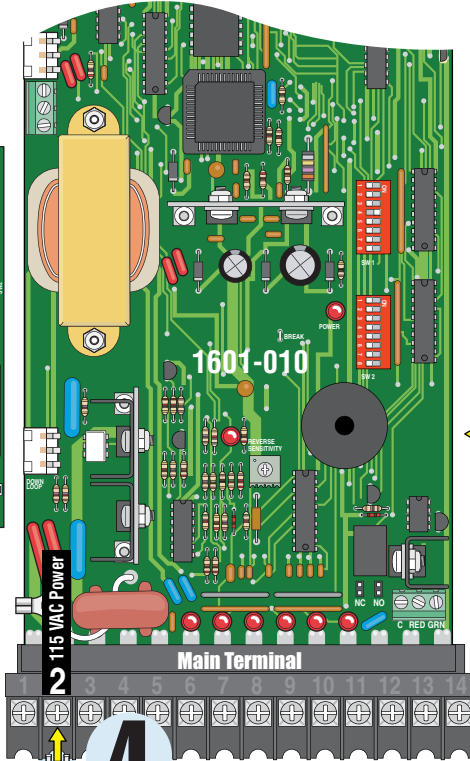
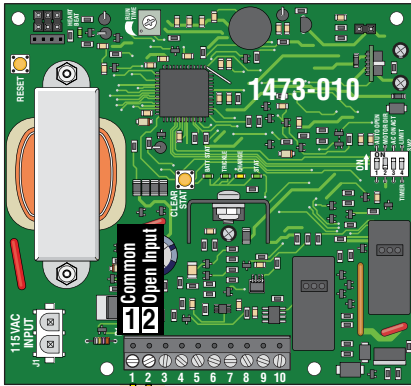
REMOVE black wire from Relay #2 and Main Terminal #2 and Discard wire.

D Wiring a Barrier Operator with: ONLY Convenience Open

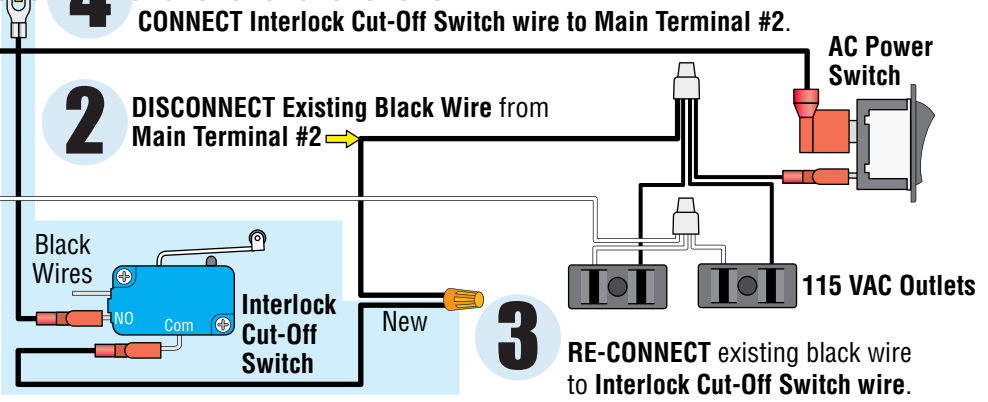
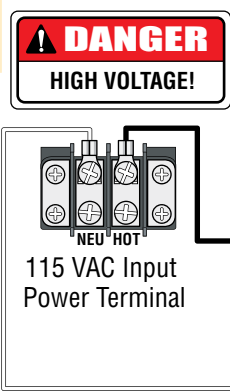
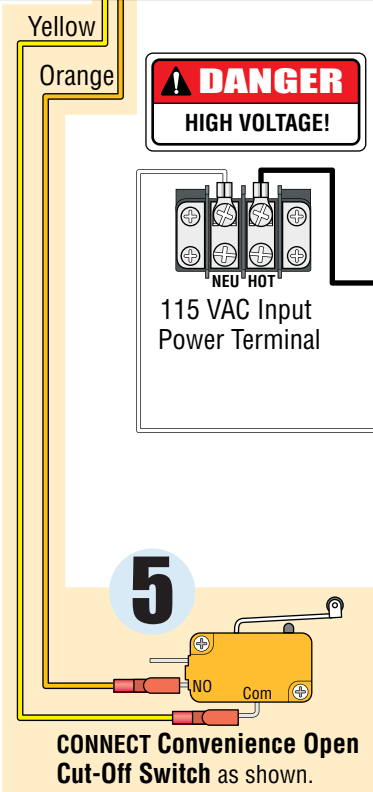
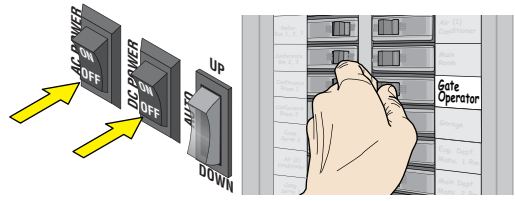
NO Break-Away Arm

Convenience Open

NOTE: Will NOT work with older model 2340-010 convenience open board



1 SHUT-OFF POWER!
FIRST . . . SHUT OFF AC and DC power switches on the operator,
THEN . . . SHUT OFF the AC input power to the operator from the circuit breaker.



4 CONNECT Interlock Cut-Off Switch wire to Main Terminal #2.

Manual Operation

1. Unlock and remove access door.
2. Remove crank tool from inside access door.
3. Flip interlock assembly door up, power will be disabled from operator.
4. Insert crank tool into motor pulley as shown.
5. Rotate crank tool to manually move operator arm UP or DOWN.

