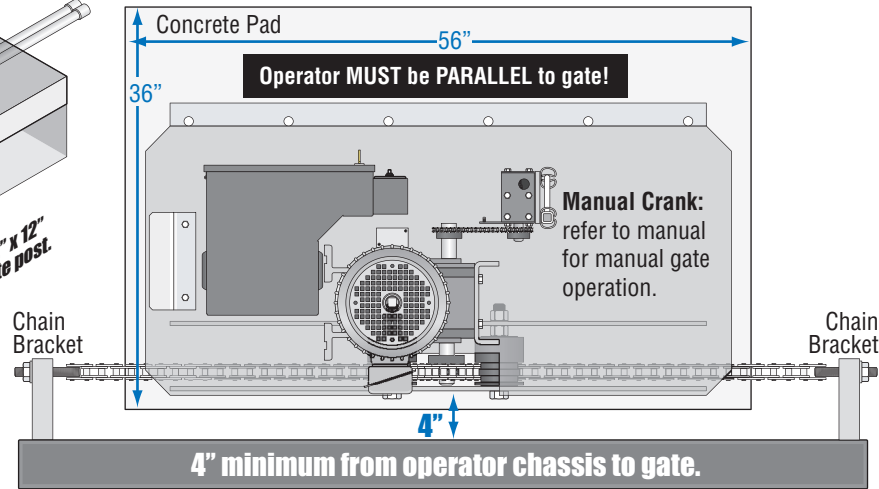
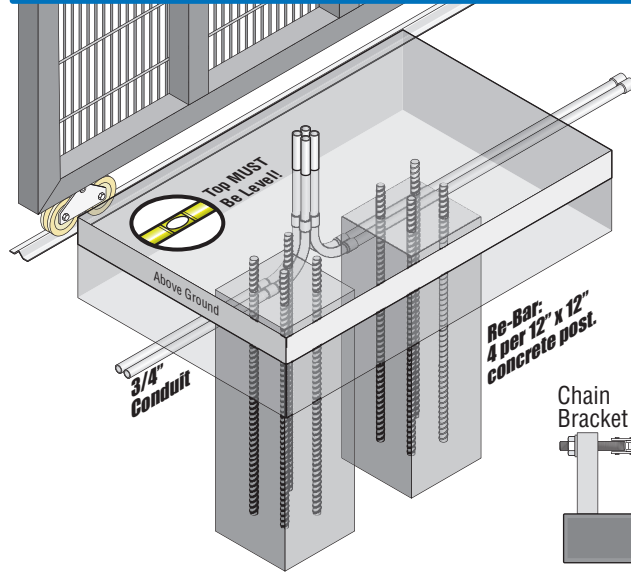
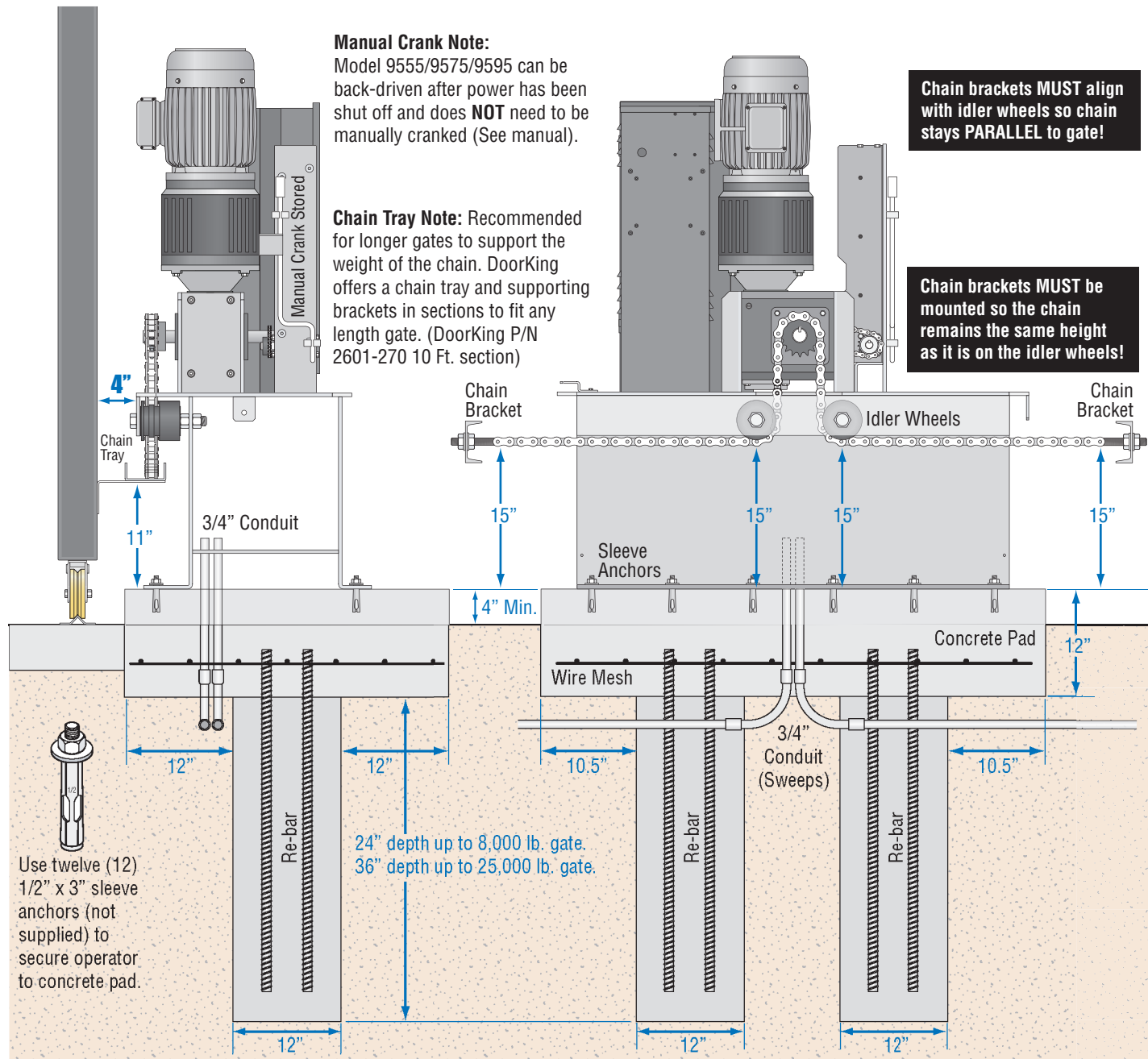


# QUICKSTART "BASIC" GUIDELINES FOR MODEL 9500 "FULL OPEN"



**Manual Crank Note:**  
Model 9555/9575/9595 can be back-driven after power has been shut off and does **NOT** need to be manually cranked (See manual).

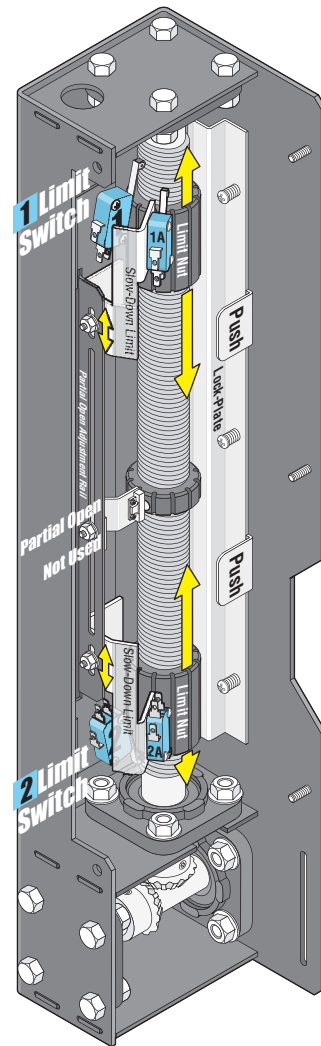
**Chain Tray Note:** Recommended for longer gates to support the weight of the chain. DoorKing offers a chain tray and supporting brackets in sections to fit any length gate. (DoorKing P/N 2601-270 10 Ft. section)



Use twelve (12) 1/2" x 3" sleeve anchors (not supplied) to secure operator to concrete pad.

24" depth up to 8,000 lb. gate.  
36" depth up to 25,000 lb. gate.

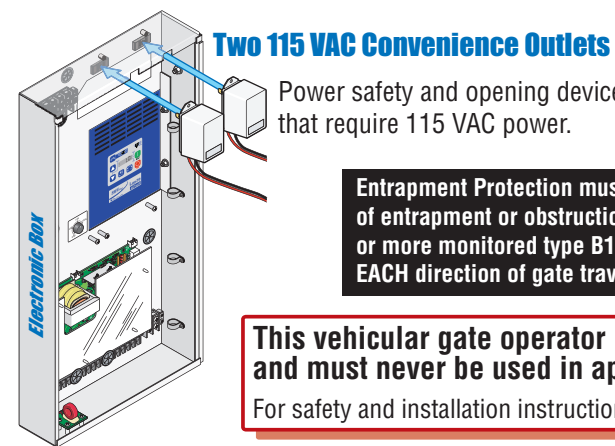
## Limit Switches



With power **OFF**, push and hold the lock plate down where shown to adjust the Open and Close limit nuts.

After adjusting the limit-nuts, be sure that the lock-plate is engaged in the slots on the limit-nuts to prevent them from rotating. The slow-down limits will move up or down 3/4 inch. **DO NOT** remove the slow-down limit assembly from the 3/4 inch slot and re-attach it in the longer slot on the partial open adjustment rail to gain further adjustment. **This will cause mechanical damage to the switch assembly when the operator is activated.**

Turn power **ON** and activate the gate operator. Re-adjust the limit nuts as necessary for full-open and full-close gate travel. After you are satisfied with the gate limit settings, the speed control knob can then be adjusted to personal preference.

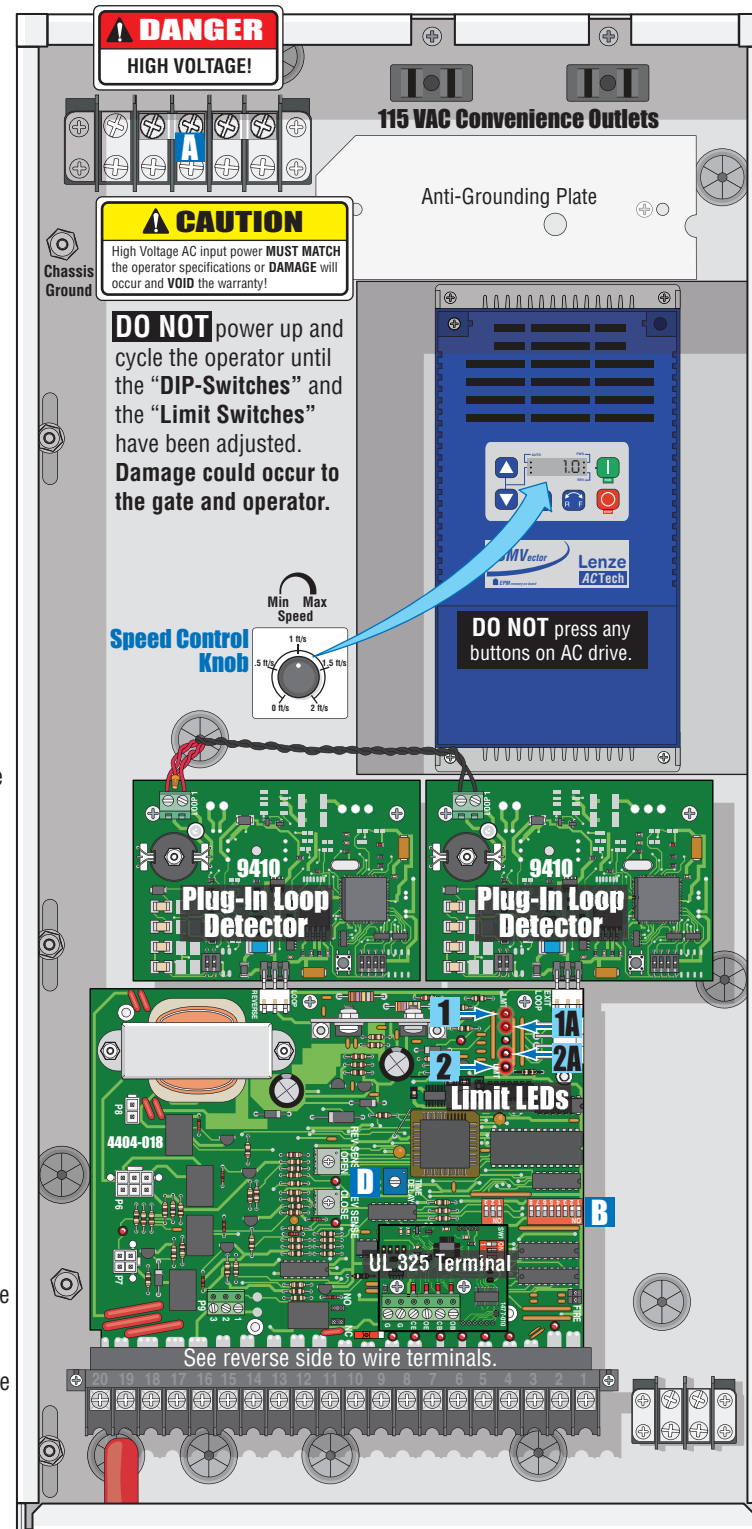


Power safety and opening devices that require 115 VAC power.

Entrapment Protection must be provided for the gate system where the risk of entrapment or obstruction exists. The operator will **NOT** run without **ONE** or more monitored type B1 or B2 external entrapment protection devices in **EACH** direction of gate travel (minimum of 2 external devices required).

This vehicular gate operator is designed for Class III and Class IV applications **ONLY** and must never be used in applications serving the general public.

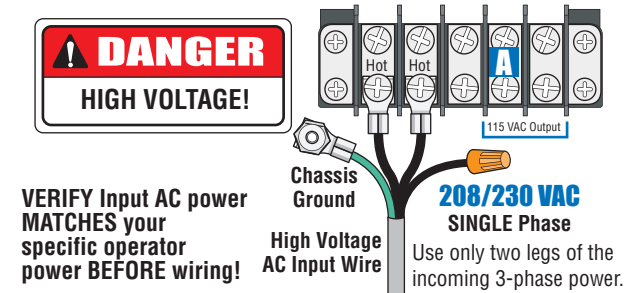
For safety and installation instructions, please refer to the Installation/Owner's manual.



## High Voltage Connection

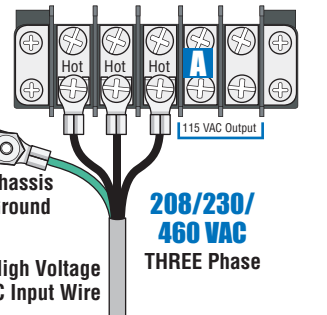
**GATE OPERATOR MUST BE PROPERLY GROUNDED!!**

**Tip:** It is recommended that a surge suppressor be installed on the high voltage power line.



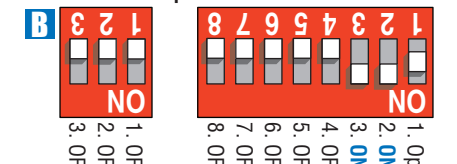
**VERIFY** Input AC power **MATCHES** your specific operator power **BEFORE** wiring!

**Check polarity of Three Phase:** Position the gate half way open. Give open command and while gate is opening, activate the appropriate limit switch with your finger. Gate should **STOP**. If it does not, activate the other limit switch. If this **STOPS** the gate, AC power wires must be changed (Reverse the connection of any 2 wires and re-check limits).



## DIP-Switches

SW 1 and 2 are Upside-Down on Circuit Board.



## Auto-Close Timer

See reverse side



## Plug-In Loop Detectors

Not included - Refer to the Installation/Owner's manual **AND** Loop Information Manual (available from [www.doorking.com](http://www.doorking.com)) for more information on loops and plug-in loop detectors.

**Important Note:** DoorKing highly recommends that loops and loop detectors are installed with this slide gate operator. A loop detection system will prevent the gate from automatically opening or closing on a vehicle when it is in the gate's path.

# QUICKSTART "BASIC" GUIDELINES FOR MODEL 9500 - DIP-SWITCH AND WIRING REFERENCE

UL 325 August 2018 Standard



120 S. Glasgow Avenue  
Inglewood, California 90301  
U.S.A.

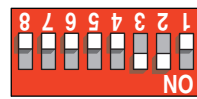
**This vehicular gate operator is designed for Class III and Class IV applications only and must never be used in applications serving the general public.**

For safety and installation instructions, please refer to the Installation/Owner's manual.

**Important:** Controls intended for user activation must be located at least six (6) feet away from any moving part of the gate and where the user is prevented from reaching over, under, around or through the gate to operate the controls. Emergency access controls only accessible by authorized personnel (e.g., fire, police, EMS) may be placed at any location in the line-of-sight of the gate.

## SW 1 DIP-Switches (Right Hand Side)

Switch	Function	Setting	Description
1	Changes the direction the operator will open/close the gate.		
2	Auto-Close Timer	OFF	Auto-close timer is OFF. Manual input required to close gate.
		ON	Auto-close timer is ON. Adjustable from 1-23 seconds to close gate.
3	Exit Loop Port Output	OFF	The output wired to terminal #4 becomes the output from the exit loop detector plugged into the EXIT Loop port. Used for dual operator application.
	Full Open Input	ON	<b>Normal Setting.</b> Terminal #4 is a normal full open input.
4 and 5	Relay Activation and LED Indicator Light Activation	4-OFF 5-OFF	Relay activates and LED is ON when the gate is fully open.
		4-OFF 5-ON	Relay activates and LED is ON when the gate is not closed.
		4-ON 5-OFF	Relay activates and LED is ON when the gate is opening and open.
		4-ON 5-ON	Relay activates and LED is ON when the gate is opening and closing.
6	Warn Before Operate	OFF	Internal alarm will <b>NOT</b> sound.
		ON	Internal alarm will sound before gate starts and throughout gate's cycle.
7	Reverses Gate	OFF	<b>Normal Setting.</b> Input to terminal #6 and/or reverse loops will REVERSE gate during CLOSE cycle.
	Stops Gate	ON	Input to terminal #6 and/or reverse loops will STOP gate during CLOSE cycle.
8	Quick-Close Timer Override	OFF	<b>Normal Setting.</b> Timer will function normally.
		ON	Opening gate will stop and begin to close as soon as all reversing inputs (Reverse loops, photo sensors) are cleared regardless of the distance the gate has opened.



**SW 1**  
Upside-Down on Circuit Board.

## SW 2 DIP-Switches (Left Hand Side)

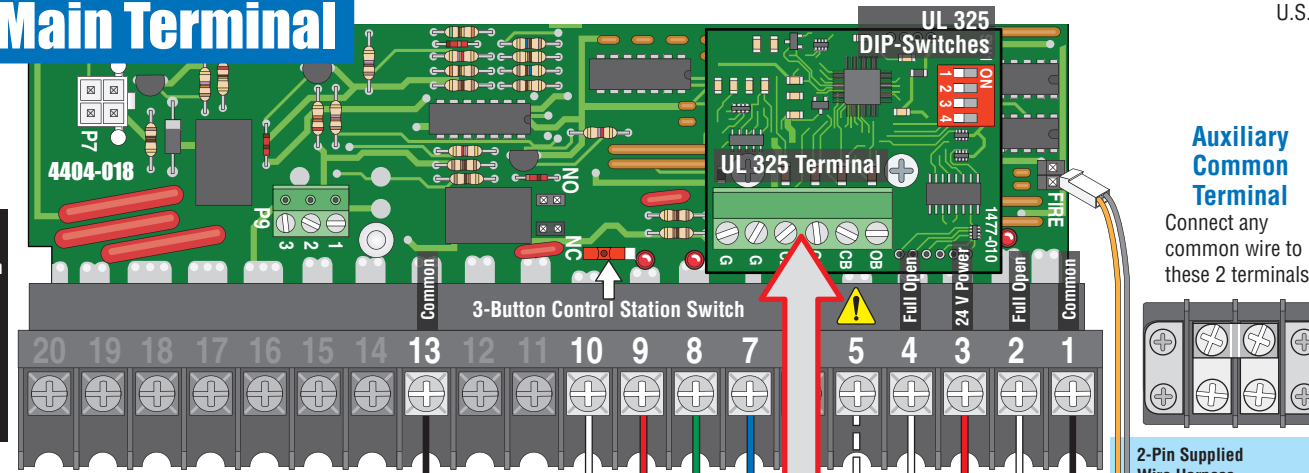
Switch	Function	Setting	Description
1	Self-Test	OFF	<b>Normal Setting.</b> Normal gate operation.
		ON	Self-test mode. Operator <b>MUST</b> be disconnected from gate to run self-test.
2	Gate Opens Uphill	OFF	<b>Normal Setting.</b> Level gate operation or gate opens DOWNHILL.
		ON	<b>MUST</b> be ON if gate opens UPHILL.
3	Gate Opens Downhill	OFF	<b>Normal Setting.</b> Level gate operation or gate opens UPHILL.
		ON	<b>MUST</b> be ON if gate opens DOWNHILL.



**SW 2**  
Upside-Down on Circuit Board.

**Note:** After a DIP-switch setting is changed, power must be turned OFF and then turned back on for the new setting to take affect.

## Main Terminal

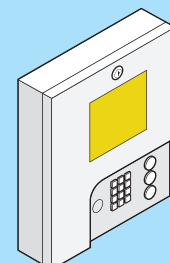


**Entrapment Protection** must be provided for the gate system where the risk of entrapment or obstruction exists. The operator will NOT run without ONE or more monitored type B1 or B2 external entrapment protection devices in EACH direction of gate travel (minimum of 2 external devices required).

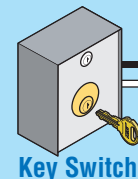
Note: All stand-alone and telephone entry devices must use a separate power source.



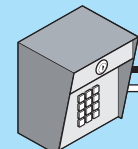
SW 1, Switch 3 **MUST** be ON except for dual operators or exit loop partial open applications.



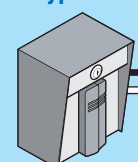
Telephone Entry



Key Switch

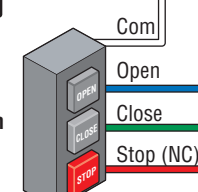


Stand-Alone Keypad



Stand-Alone Card Reader

**3-Button Control Station Switch** in **RIGHT** position ONLY when using a 4-wire 3-button control station with a normally closed STOP circuit.

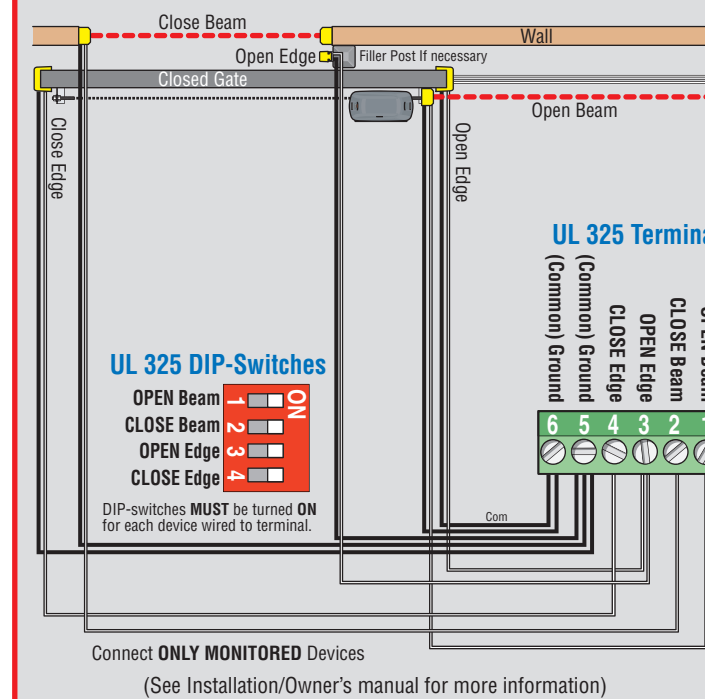


3-Button Control Station

### External Entrapment Protection Devices

**IMPORTANT:** Only 1 monitored Device can be connected to each input. An **OPTIONAL** Expansion Kit (sold separately) will allow connection for additional devices.

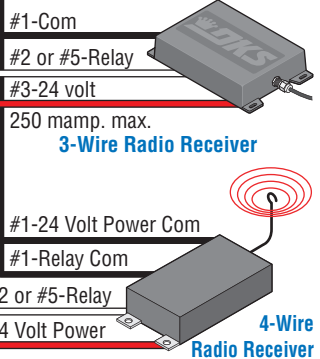
**IMPORTANT:** Monitored Photo and Edge sensors must be end-of-line resistive types. See specific manufacturer's wiring manual for more information.



Gate will **ONLY OPEN** when this device is activated by authorized personnel ONLY (fire, police, EMS) and operator has power. Alarm will sound during entire open cycle. Operator will then go into a hard shutdown once fully opened. Operator **MUST** be reset to function normally again. This device **MUST** be mounted in the line-of-site of gate so authorized personnel can monitor gate movement.

**Activation Note:** Activation of this device will **OPEN** gate regardless of the status of the open direction monitored external entrapment protection device(s). If gate is opening, and the operator's **inherent** entrapment protection system detects an obstruction, the operator will reverse approx. 2 inches and go into a hard shutdown. Operator reset button **MUST** be pushed to function again **OR** cycle operator's power.

**Main Terminal #3 Note:** Exceeding 250 mA of power from this terminal may cause the circuit board transformer to overheat, causing intermittent problems.



**#5 Terminal Note:** Any opening device connected to terminal #5 will open the gate to the partial open setting. External entrapment protection devices will also open the gate to the partial open setting. If the **Inherent Reverse Sensor** gets activated during the close cycle, it will always **fully** open the gate.