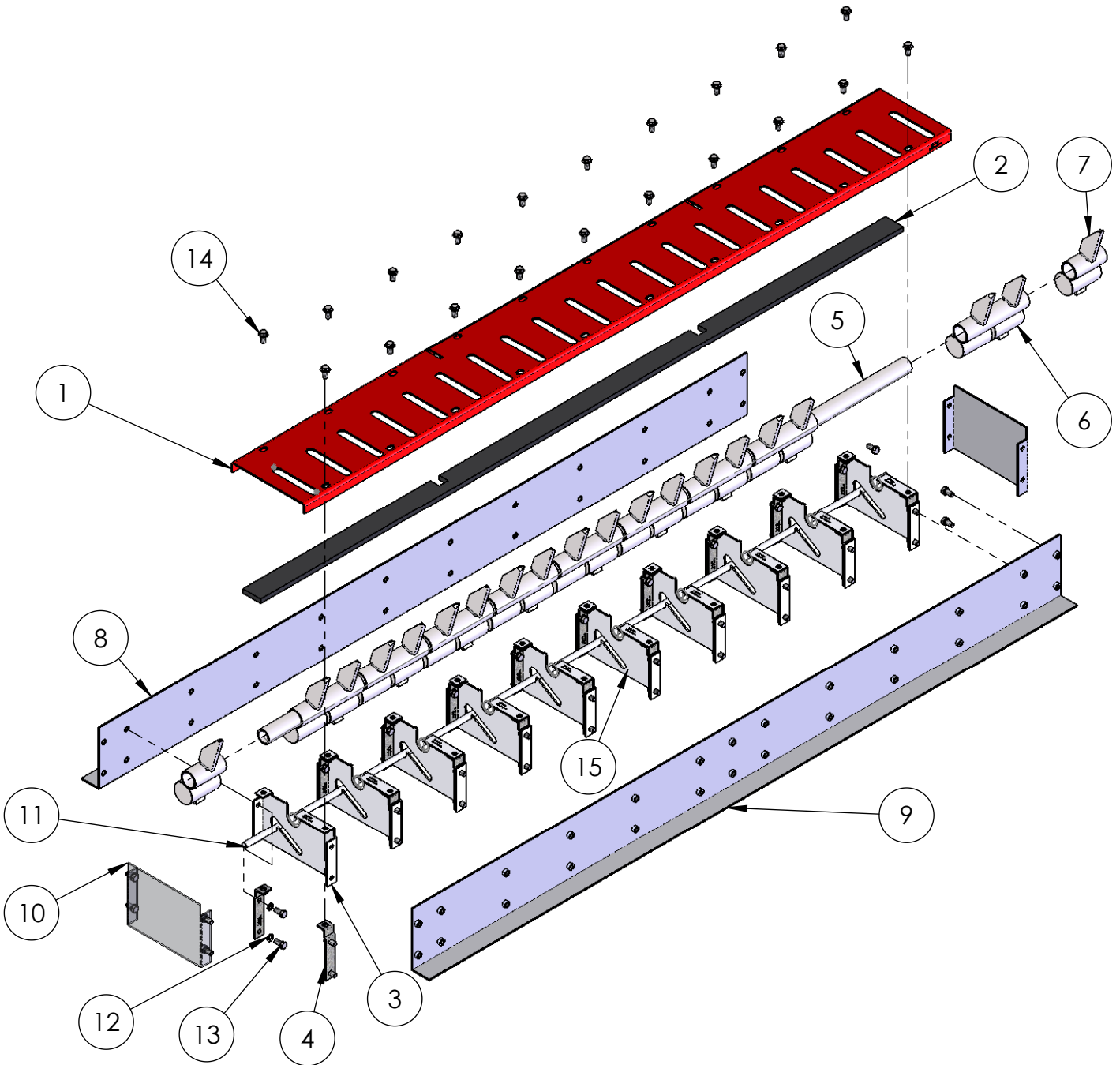


REVISIONS

ZONE	REV.	DESCRIPTION	DATE	APPROVED
	B	Change Qty of 1610-035 Sngl Spike from (20) to (2), add (9) 1610-155 Dual Spike	3/21/2015	DC



ITEM	PART #	DESCRIPTION	QTY.
1	1610-103	Panel Tirespike Top Rev C	1
2	1610-015	Rubber strip	1
3	1610-054	Panel Inner	10
4	1610-056	Bracket Support w/Nut	20
5	1610-032	Spike Tube	1
6	1610-155	Dual Weighted Spike w LD tab	9
7	1610-035	Weighted Spike w LD tab Rev C	2
8	1610-105	Tirespike Right Side Panel	1
9	1610-106	Tirespike Left Side Panel	1
10	1610-051	Tirespike End Panel	2
11	1610-044	Rod Steel 1-2in x 72	1
12	2620-047	Washer Split 3-8-16	48
13	2615-128	Bolt Hex 3-8-16x3-4	48
14	2615-262	SS Bolt Hex Flange Lock 3/8-16 x 3/4"	20

1. Notes: Unless Otherwise Specified.

PROPRIETARY AND CONFIDENTIAL
 THE INFORMATION CONTAINED IN THIS DRAWING IS THE SOLE PROPERTY OF DOORKING. ANY REPRODUCTION IN PART OR AS A WHOLE WITHOUT THE WRITTEN PERMISSION OF DOORKING IS PROHIBITED.

www.doorking.com



IPB-Flush Traffic Spike w/Lockdown

SIZE A	DWG. NO. 1610-083	REV. A
Scale: None		SHEET 1 OF 1