

# QUICKSTART "BASIC" GUIDELINES FOR STANDARD MODEL 6050/6100 - FOR GATES UP TO 10 FEET AND OPENING 90°



120 S. Glasgow Avenue  
Inglewood, California 90301  
U.S.A.

**Models 6050/6100 is intended for installation only on swing gates used for vehicles.**  
Pedestrians must be supplied with a separate access opening.

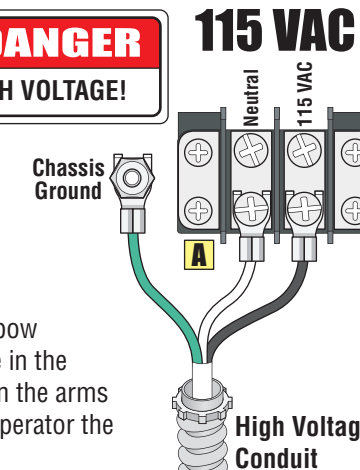
For safety and installation instructions, please refer to the Installation/Owner's manual.

UL 325 August  
2018 Standard

## High Voltage Connection

**GATE OPERATOR MUST BE PROPERLY GROUNDED!!**

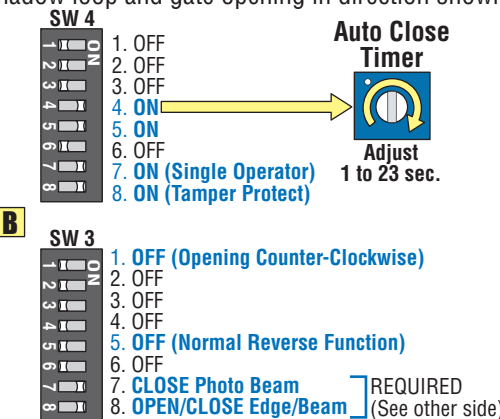
**Tip:** It is recommended that a surge suppressor be installed on the high voltage power lines.



**Important:** The elbow assembly must be in the correct position on the arms **BEFORE** cycling operator the first time.

## DIP-Switch Settings

Using shadow loop and gate opening in direction shown.



## Loop Detectors

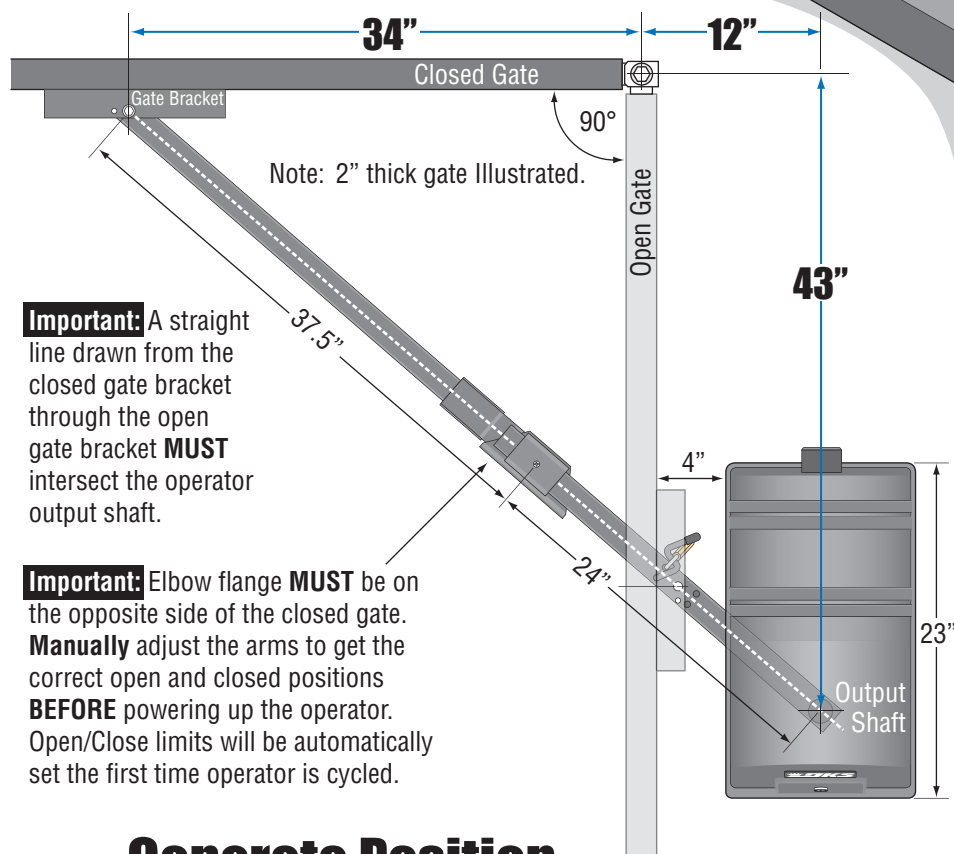
**C** Not included - Refer to the Installation/Owner's manual and Loop Information Manual (available **FREE** from [www.doorking.com](http://www.doorking.com)) for more information on loops and loop detectors.

## Radio Receiver

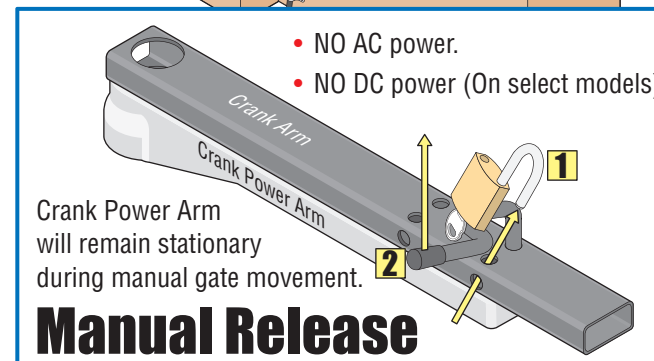
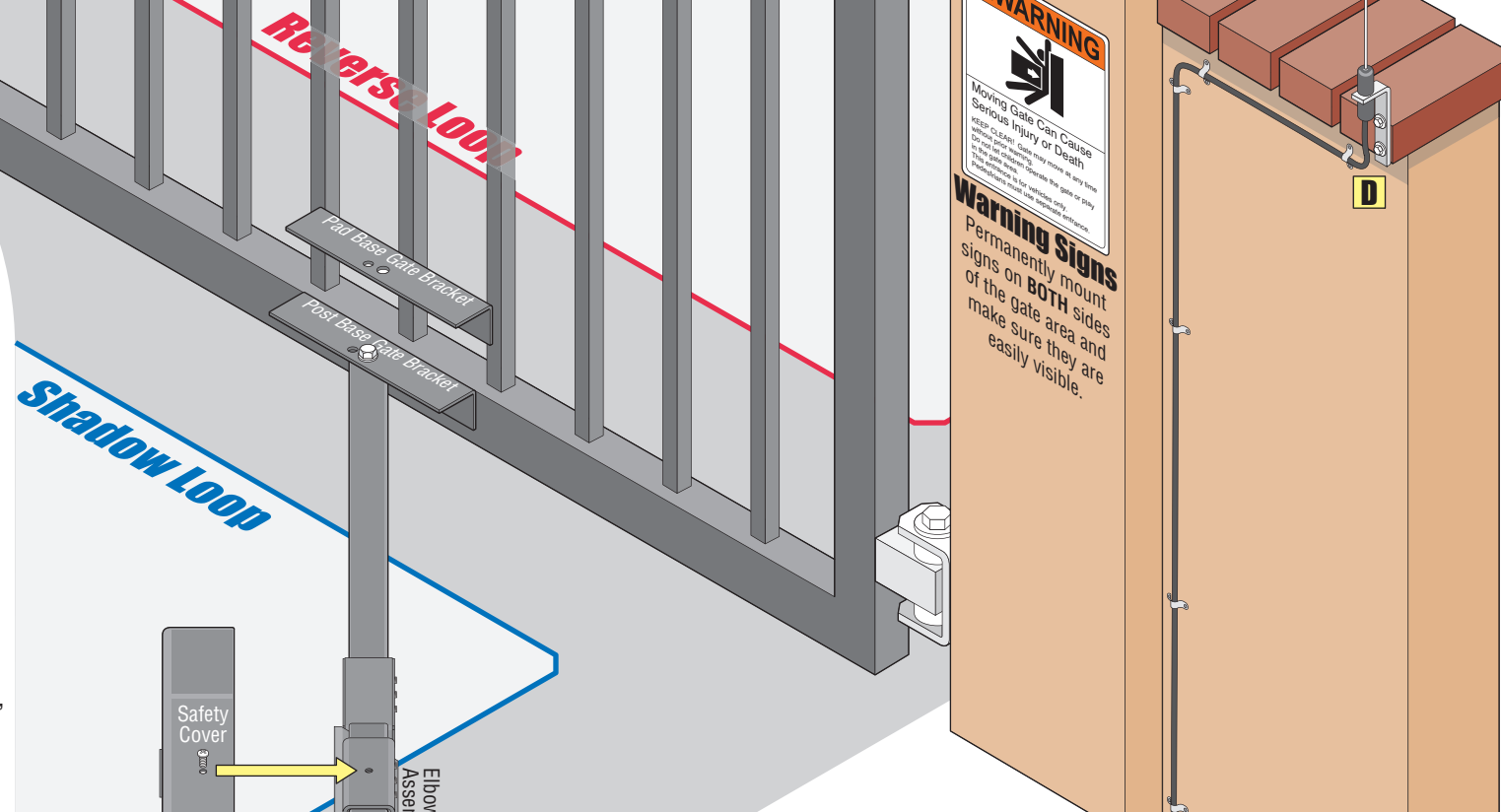
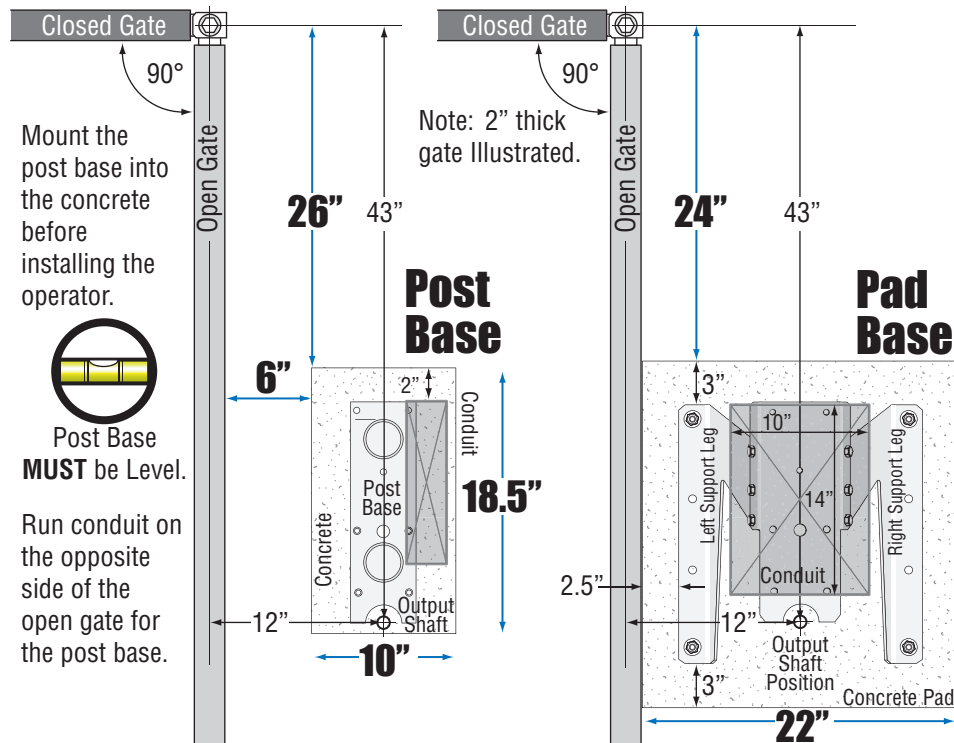
**D** Not included - Refer to a specific Radio Receiver Manual (available from [www.doorking.com](http://www.doorking.com)) for more information on radio receivers and antenna installation. (See reverse side for wiring)

**Entrapment Protection must be provided for the gate system where the risk of entrapment or obstruction exists. The operator will not run without one or more monitored type B1 or B2 entrapment protection devices in EACH entrapment area.**

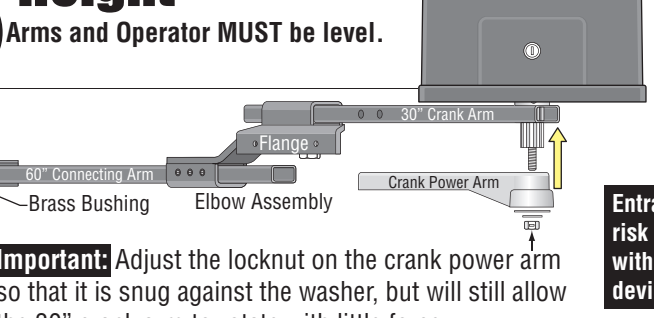
## Operator Position



## Concrete Position



## Arm Assembly and Gate Bracket Height



# QUICKSTART "BASIC" GUIDELINES FOR MODEL 6050/6100 - DIP-SWITCH AND WIRING REFERENCE

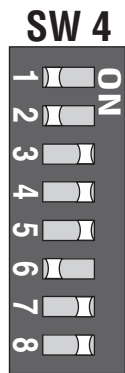
UL 325 August 2018 Standard



120 S. Glasgow Avenue  
Inglewood, California 90301  
U.S.A.

**Model 6050/6100 is intended for installation only on swing gates used for vehicles.** Pedestrians must be supplied with a separate access opening.

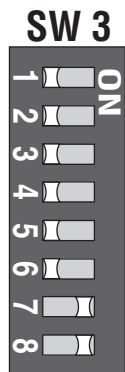
For safety and installation instructions, please refer to the Installation/Owner's manual.



SW 4 (Top 8 Switches)				
Switch	Function	Setting	Description	
1 and 2	Circuit Board Relay	1-OFF 2-OFF	Relay activates when gate is open (Shadow loop setting when used).	
		1-OFF 2-ON	Relay activates when gate is not closed.	
		1-ON 2-OFF	Relay activates when gate is opening and open.	
		1-ON 2-ON	Relay activates when gate is opening and closing.	
3	Exit Loop Port Output	OFF	The output wired to terminal #12 becomes the output from the exit loop detector plugged into the EXIT Loop port.	
	Full Open Input	ON	<b>Normal Setting.</b> Terminal #12 is a normal full open input.	
4	Auto-Close Timer	OFF	Auto-close timer is OFF. Manual input required to close gate.	
		ON	Auto-close timer is ON. Adjustable from 1-23 seconds to close gate.	
5	Slide Operator	OFF	Switch must be OFF for slide gate operator ( <b>DO NOT</b> use for 6050/6100).	
	Swing Operator	ON	<b>Normal Setting.</b> Switch must be ON for swing gate operator.	
6	3-Button	OFF	OFF when using a 3-button station (DoorKing 3-button control stations only).	
	Single Button	ON	ON when using a single button control, terminals 13 & 14 become a STOP input.	
7	Dual Operators	OFF	Switch must be OFF when bi-parting (dual) gates are used.	
	Single Operator	ON	Switch must be ON for single operator.	
8	Tamper Protect	OFF	Tamper protect is OFF.	
		ON	<b>Normal Setting.</b> Tamper protect is ON. Operator will close gate when being forced open.	

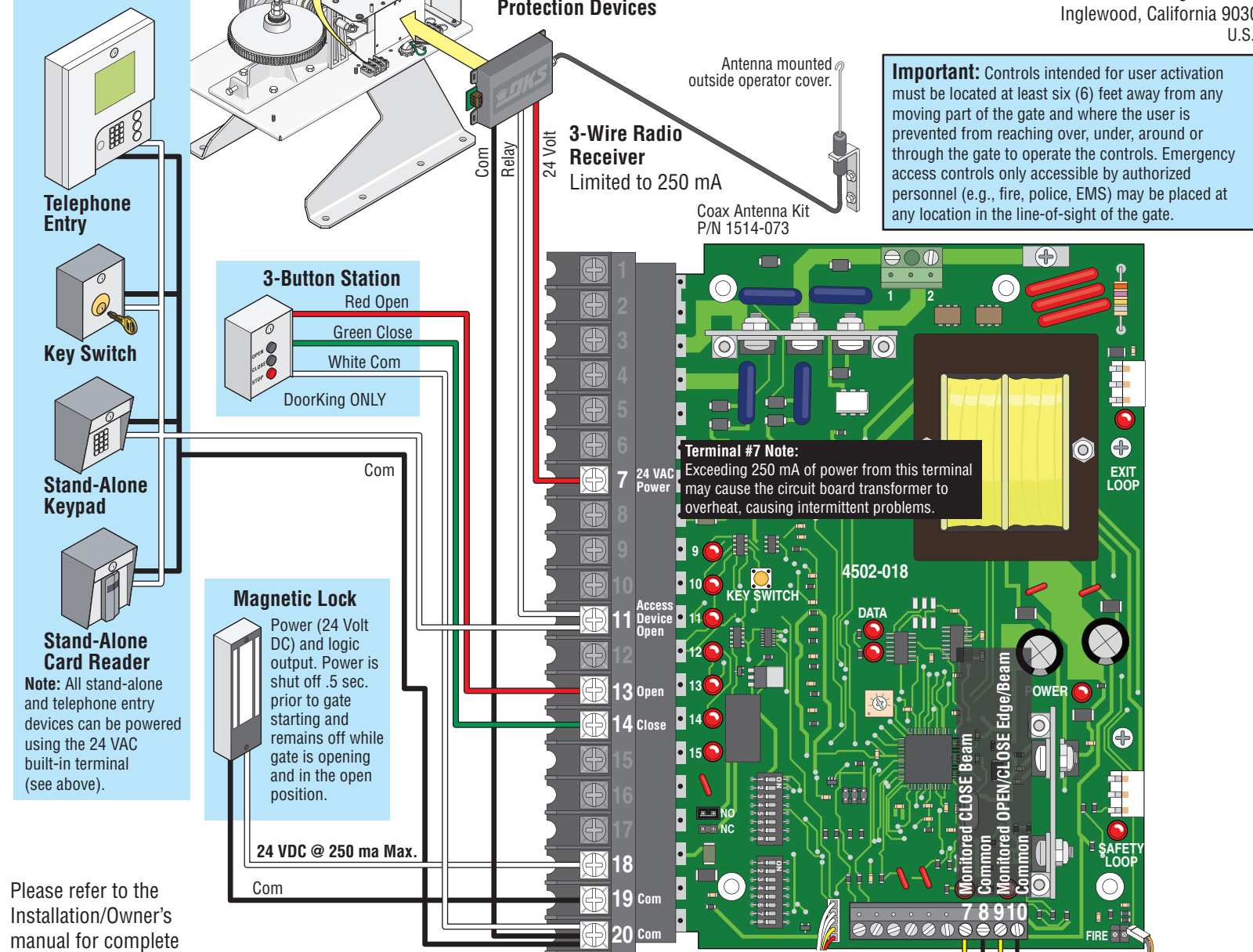
**Every time the operator is powered up, the First open command will automatically set the open and close limits of the gate.**

**Note:** After a DIP-switch setting is changed, power must be turned OFF and then turned back on for the new setting to take affect.



SW 3 (Bottom 8 Switches)				
Switch	Function	Setting	Description	
1	Primary Gate Opening Direction	ON	Opens Clockwise	
		OFF	Opens Counter-Clockwise	
2	Secondary Gate Opening Direction		Same as above, for secondary 6050/6100 ONLY.	
3	Self-Test	OFF	<b>Normal Setting.</b> Normal operation.	
		ON	Self-test mode. Operator <b>MUST</b> be disconnected from gate to run self test.	
4	Motor Control for Secondary Operator	OFF	Switch is OFF when both primary and secondary operator motors are powered from main terminals 4 and 5. Applies to operators originally manufactured with 4501, Rev O boards or lower).	
		ON	Switch is ON when secondary operator motor is powered from the secondary motor terminals. Applies to operators manufactured with 4501, Rev P boards and higher, <b>and all 4502 boards.</b>	
5	Reverse	OFF	Terminal 15 is a STANDARD Reverse input.	
	Shadow Loop	ON	Terminal 15 is a Shadow input. Gate will <b>NOT</b> stop <b>during</b> the close cycle.	
6	Gate Overlap	OFF	Primary and secondary operators start at the same time.	
		ON	Secondary operator starts 1-2 seconds prior to primary operator.	
7	Monitored Close Beam	OFF	No Photo Sensor connected to Aux terminal 7 and 8.	
		ON	Photo sensor is connected to Aux terminal 7 and 8 and monitored. (Close ONLY)	
8	Monitored Edge/Beam	OFF	No Edge or Beam connected to Aux terminal 9 and 10.	
		ON	Edge OR Beam is connected to Aux terminal 9 and 10 and monitored. (Open/Close)	

## #11 - Access Control Devices



Please refer to the Installation/Owner's manual for complete installation instructions for entrapment protection devices.

**Entrapment Protection must be provided for the gate system where the risk of entrapment or obstruction exists. The operator will not run without one or more monitored type B1 or B2 entrapment protection devices in EACH entrapment area.**

**IMPORTANT:** Monitored Photo and Edge sensors must be end-of-line resistive types. See specific manufacturer's wiring manual for more information.

**Note:** Only 1 monitored Device can be connected to each input. An **OPTIONAL** Expansion Kit (sold separately) will allow connection for additional devices.

