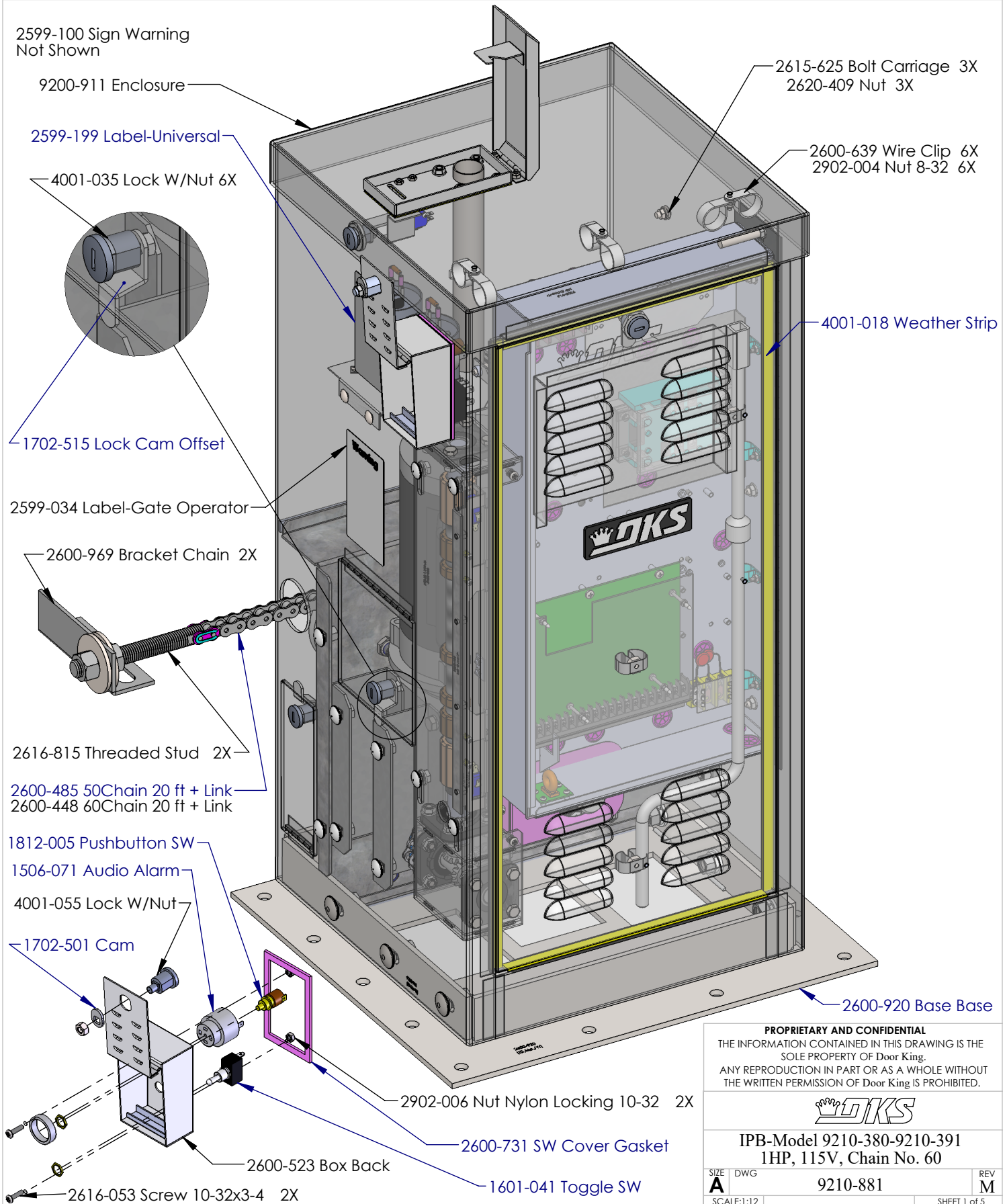



REVISIONS

REV	DESCRIPTION	DRW	APPR
J	G Change 2600-245 to 2600-259 limit Nut 06/30/10, H Change 2600-246 to 2600-254 limit Nut Assy. 07/14/10, I Add 2601-101 Keyway to BOM 09/09/10, J Change Housing 9200-905 to 9200-910, Add (2) 2601-282 Plugs 07/22/11	3/21/14	DC
K	Change 9200-910 to 9200-911, Remove 2600-919 -918 -923 -924 Idler Panels, Add 9210-180 & 9210-185, Remove 2600-971 -972 Gear Box Mtg Bkts, Add 9210-171 -172 & -173, Add (2) Locks 4001-035 & Cam 1702-515	3/23/15	DC
L	Removed all Limit Box parts Add 9200-021 Assy 2/25/16 DC	3/7/16	DC
M	2601-266 Gearbox was 2600-348, 2600-327 Sprocket 19 Tooth was 2600-317 Sprocket 25 Tooth, 2600-380 Sprocket 16 Tooth 60 Chain was 2600-355 Sprocket 21 Tooth, 2600-375 Sprocket 20 Tooth 50 Chain was 2600-395 Sprocket 25 Tooth	1/5/2021	DC

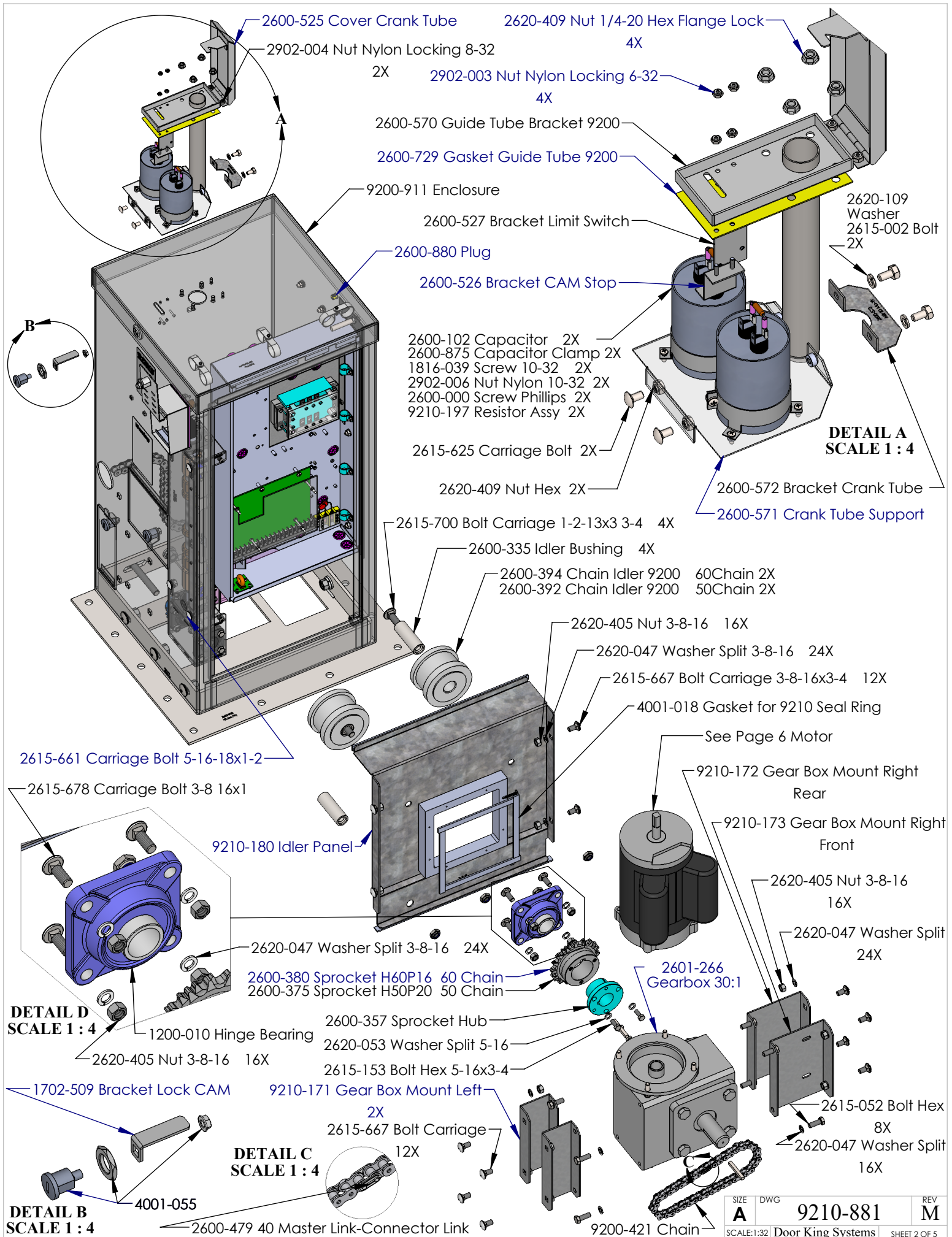


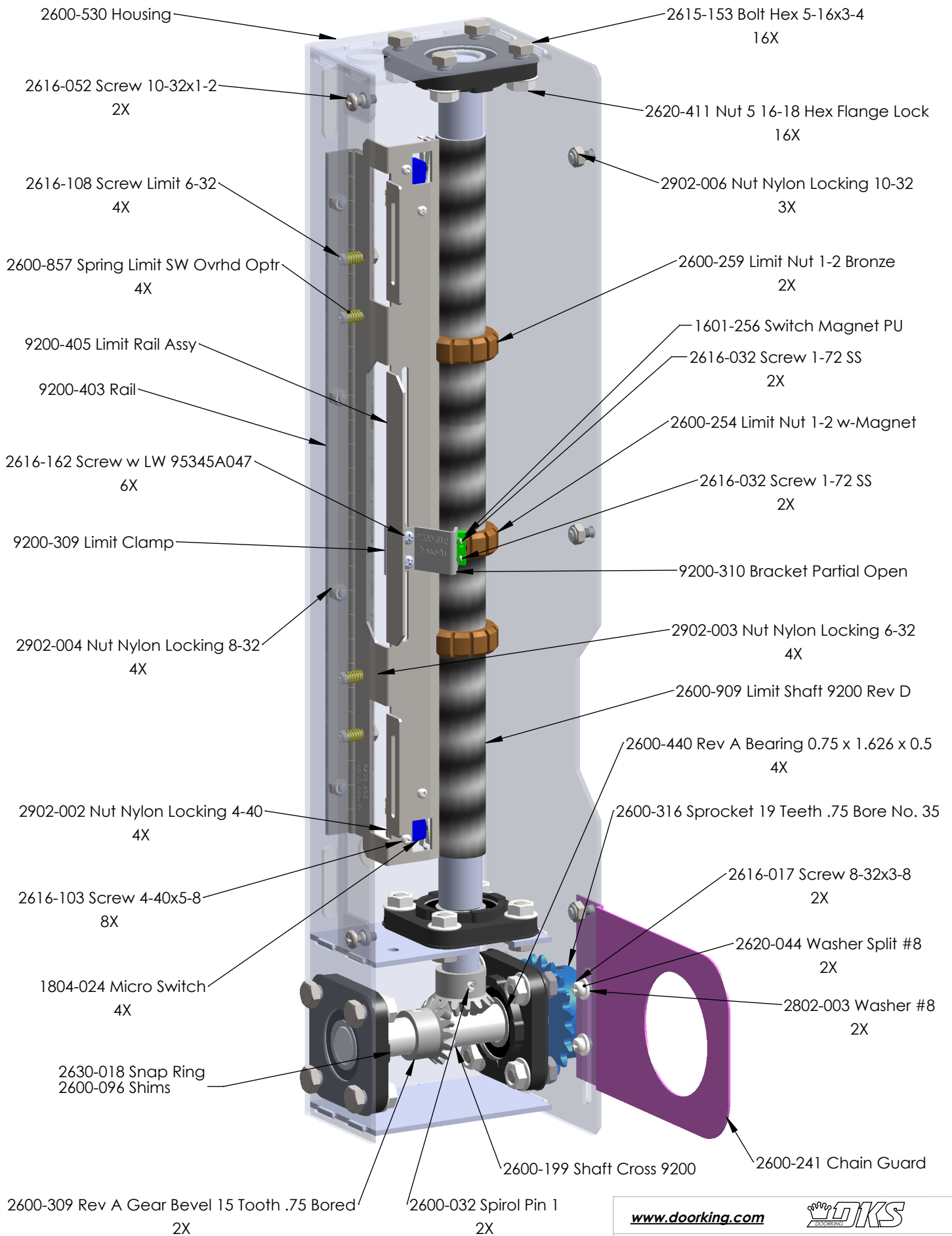
**PROPRIETARY AND CONFIDENTIAL**  
 THE INFORMATION CONTAINED IN THIS DRAWING IS THE  
 SOLE PROPERTY OF Door King.  
 ANY REPRODUCTION IN PART OR AS A WHOLE WITHOUT  
 THE WRITTEN PERMISSION OF Door King IS PROHIBITED.



**IPB-Model 9210-380-9210-391**  
**IHP, 115V, Chain No. 60**

SIZE <b>A</b>	DWG 9210-881	REV <b>M</b>
SCALE: 1:12		SHEET 1 of 5





**9200-005 Clear Cover  
not shown for clarity**

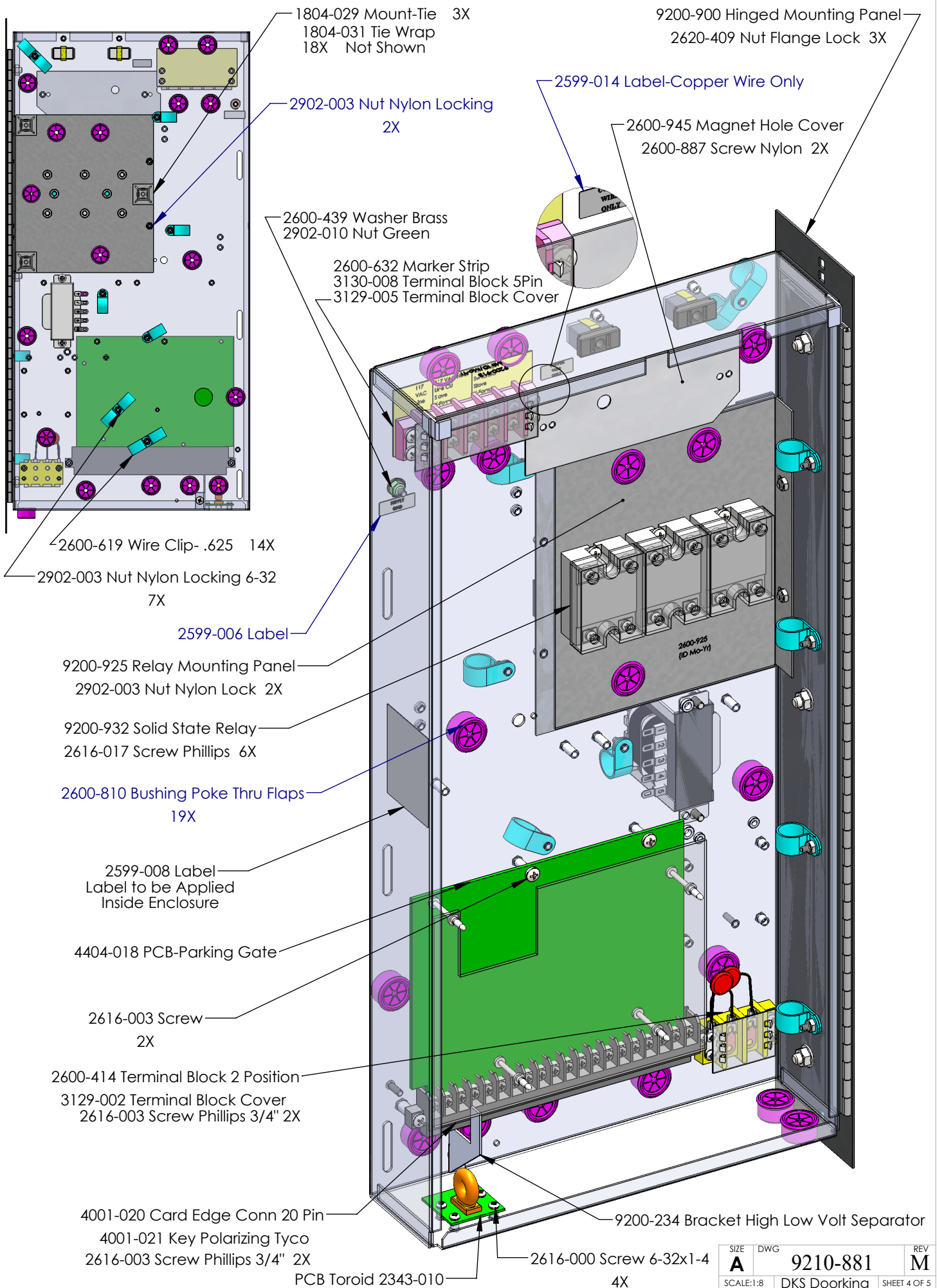
**PROPRIETARY AND CONFIDENTIAL**  
THE INFORMATION CONTAINED IN THIS DRAWING IS THE SOLE PROPERTY  
OF DOOR KING. ANY REPRODUCTION IN PART OR AS A WHOLE  
WITHOUT THE WRITTEN PERMISSION OF DOOR KING IS PROHIBITED.

[www.doorking.com](http://www.doorking.com)

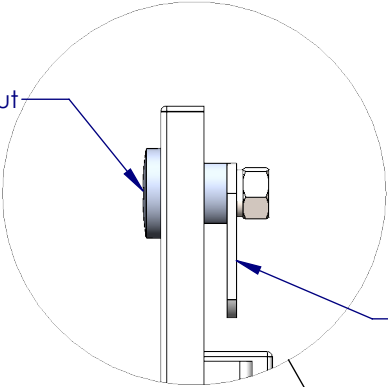


**IPB-Limit Switch Enclosure 1/2" Nut**

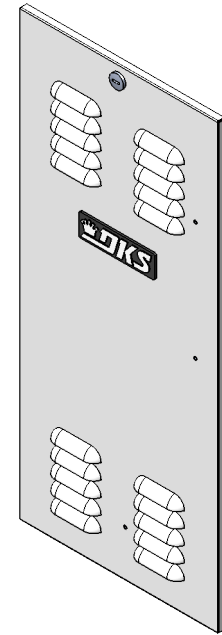
SIZE	DWG. NO.	REV.
A	9200-021	M
Scale: None		SHEET 3 OF 6



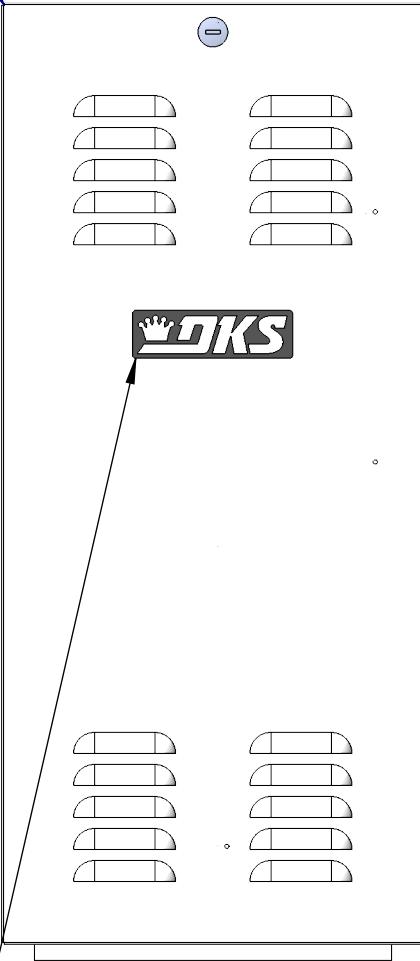
4001-055 Lock w/Nut



1702-503 Cam 1.25

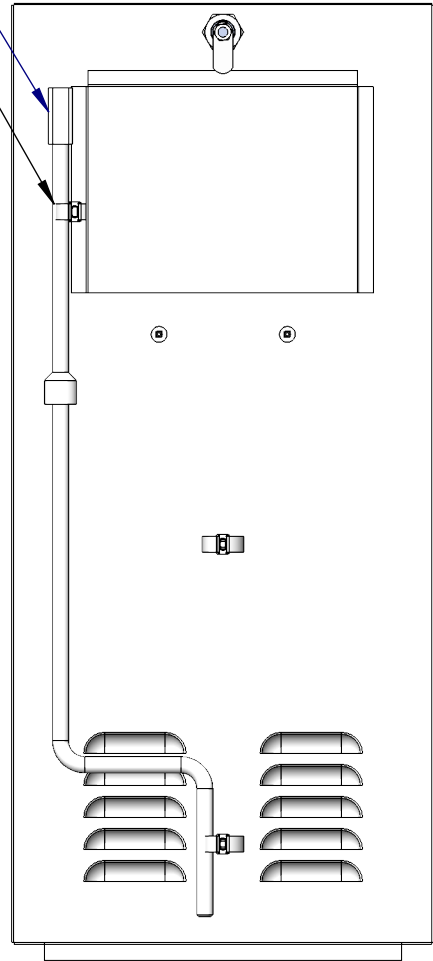
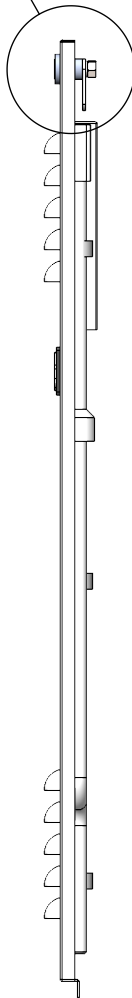


9240-927 Door Enclo Stainless



2600-214 Spring Clip 3X  
2902-003 Nut 3X

2600-193 Crank Square Tube



2600-732 Logo plate  
1897-052 Gasket 2X  
2802-040 Washer Push On 2X

Model	Description	Motor	Capacitor	Marker Strip	Wire Set	Transformer	Solid State Relay
9210-380	1HP 115V 1Phase 50 Chain	2600-278	2600-102	2600-431	9210-143	Not used	9200-932 Qty 3
9210-381	1HP 115V 1Phase 60 Chain	2600-278	2600-102	2600-431	9210-143	Not used	9200-932 Qty 3
9210-382	1HP 208V 1Phase 50 Chain	2600-280	2600-234	2600-434	9210-143	4001-087	9200-932 Qty 3
9210-383	1HP 208V 1Phase 60 Chain	2600-280	2600-234	2600-434	9210-143	4001-087	9200-932 Qty 3
9210-384	1HP 230V 1Phase 50 Chain	2600-280	2600-234	2600-469	9210-143	4001-087	9200-932 Qty 3
9210-385	1HP 230V 1Phase 60 Chain	2600-280	2600-234	2600-469	9210-143	4001-087	9200-932 Qty 3
9210-386	1HP 208V 3Phase 50 Chain	2600-295	Not used	2600-434	9210-145	4001-087	9200-933
9210-387	1HP 208V 3Phase 60 Chain	2600-295	Not used	2600-434	9210-145	4001-087	9200-933
9210-388	1HP 230V 3Phase 50 Chain	2600-295	Not used	2600-472	9210-145	4001-087	9200-933
9210-389	1HP 230V 3Phase 60 Chain	2600-295	Not used	2600-472	9210-145	4001-087	9200-933
9210-390	1HP 460V 3Phase 50 Chain	2600-295	Not used	2600-473	9210-145	4001-087	9200-933
9210-391	1HP 460V 3Phase 60 Chain	2600-295	Not used	2600-473	9210-145	4001-087	9200-933