

DETAIL A
SCALE 1 : 2

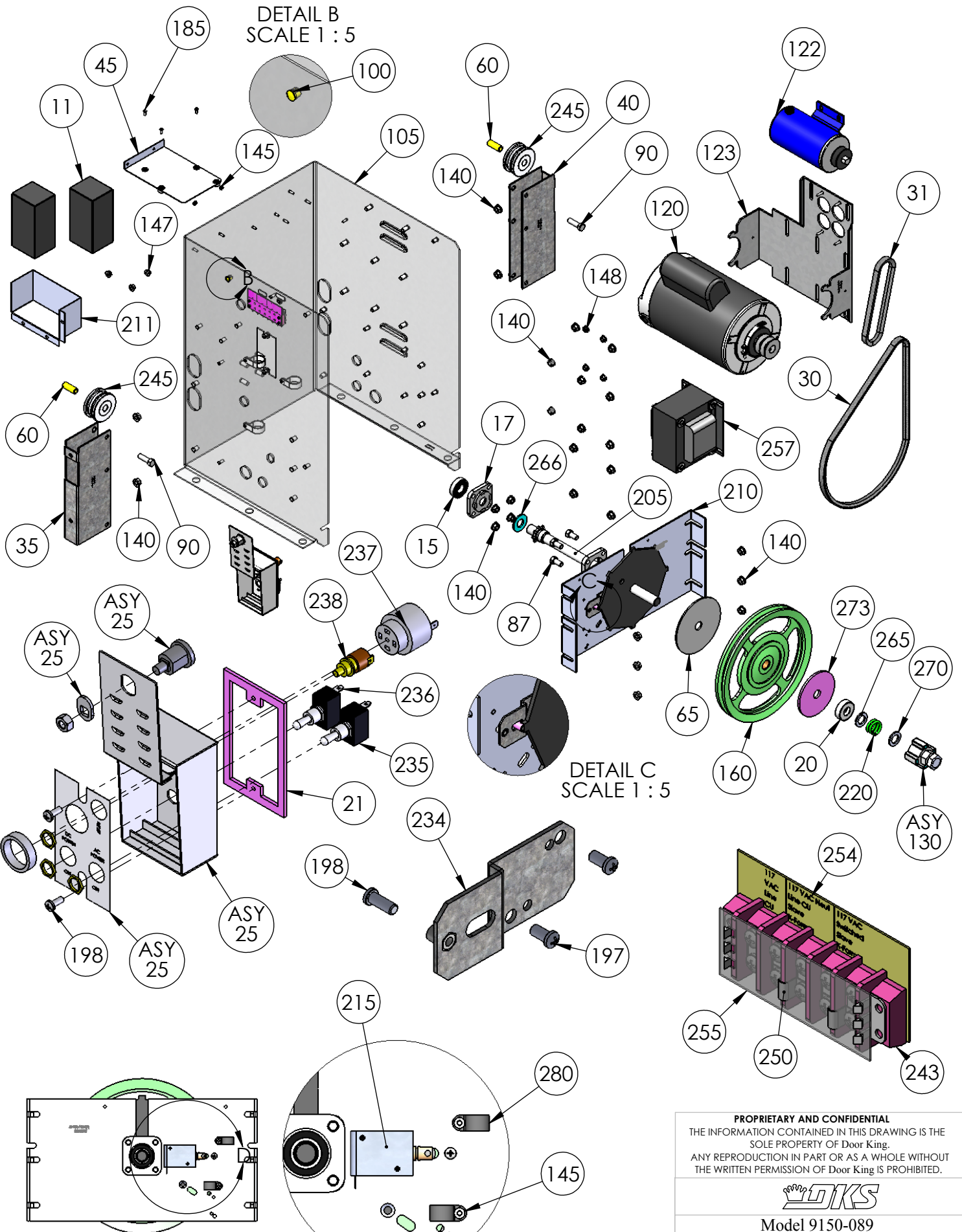
PROPRIETARY AND CONFIDENTIAL
 THE INFORMATION CONTAINED IN THIS DRAWING IS THE
 SOLE PROPERTY OF Door King.
 ANY REPRODUCTION IN PART OR AS A WHOLE WITHOUT
 THE WRITTEN PERMISSION OF Door King IS PROHIBITED.



Model 9150-089
 1HP 460V Batt. Backup

SIZE	DWG	REV
A	9150-889	H
SCALE: 1:1		SHEET 1 of 3

DETAIL B
SCALE 1 : 5



DETAIL C
SCALE 1 : 5

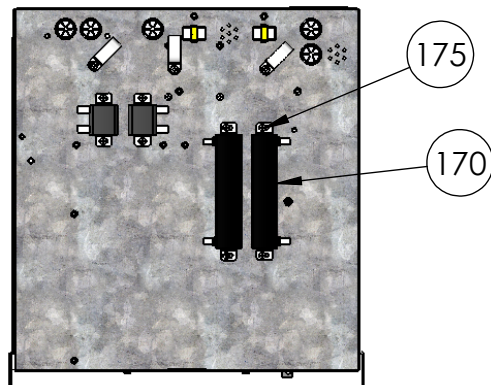
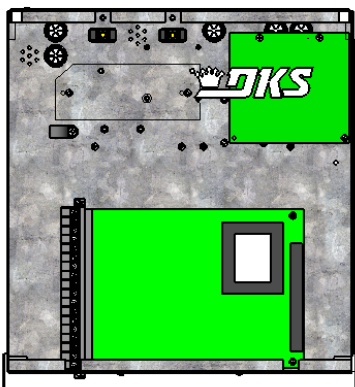
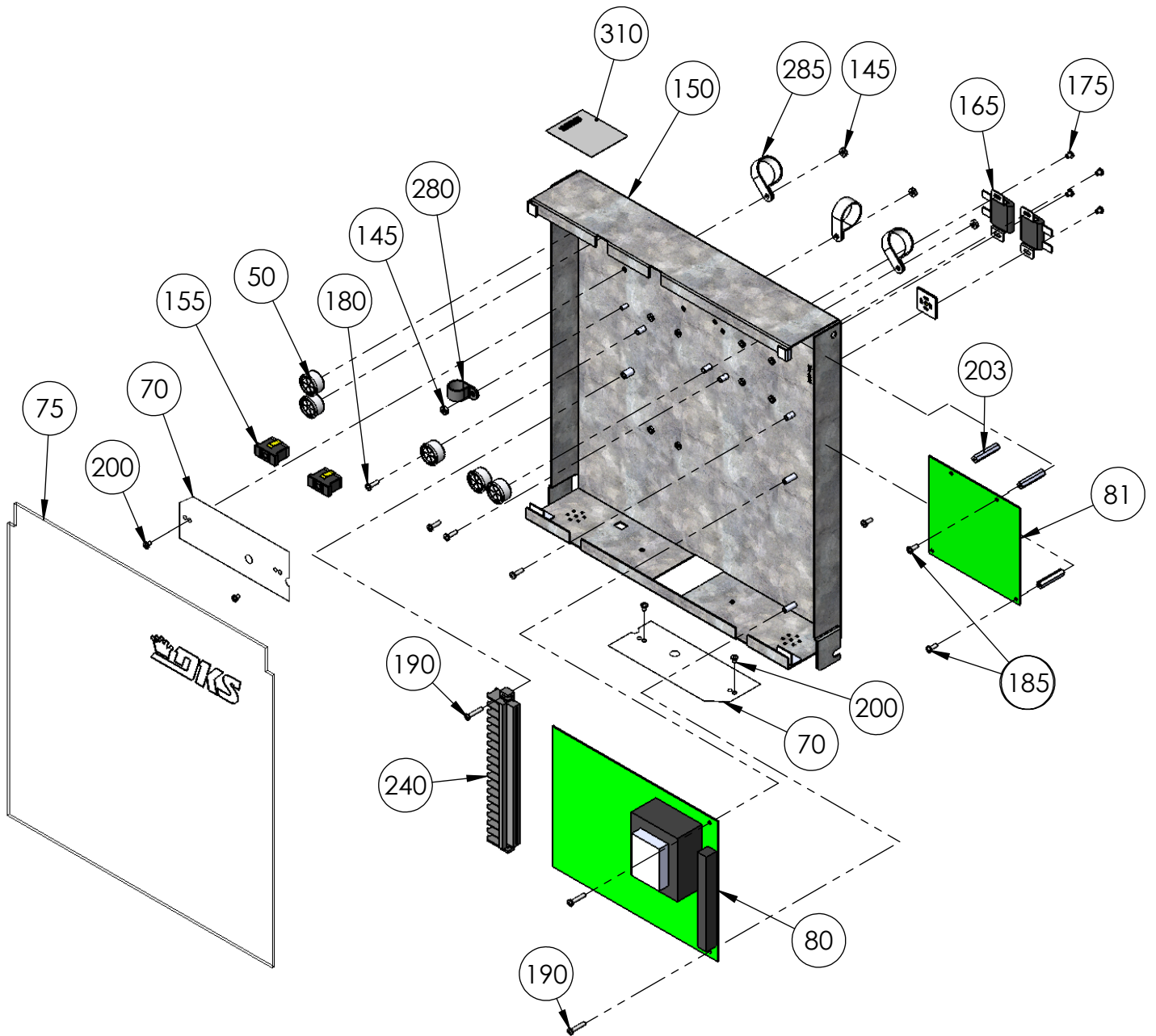
DETAIL D
SCALE 1 : 4

PROPRIETARY AND CONFIDENTIAL
 THE INFORMATION CONTAINED IN THIS DRAWING IS THE
 SOLE PROPERTY OF Door King.
 ANY REPRODUCTION IN PART OR AS A WHOLE WITHOUT
 THE WRITTEN PERMISSION OF Door King IS PROHIBITED.

DKS

Model 9150-089
 1Hp 460Volt Batt Backup

SIZE A	DWG 9150-889	REV H
SCALE: 1:32		SHEET 2 of 3



PROPRIETARY AND CONFIDENTIAL
 THE INFORMATION CONTAINED IN THIS DRAWING IS THE
 SOLE PROPERTY OF Door King.
 ANY REPRODUCTION IN PART OR AS A WHOLE WITHOUT
 THE WRITTEN PERMISSION OF Door King IS PROHIBITED.



Model 9150-089
 1 Hp 460Volt Batt Backup

SIZE	DWG	REV
A		H
SCALE: 1:24	9150-889	SHEET 3 of 3

9150-089	Part #	QT	
	1 9150-066		1 Manual Installation
	7 2600-852		1 Accessory Box 9150 Operator
	8 1897-052		2 Gasket, Microphone Support
	9 2802-040		2 Washer Push on Clamp
	10 2600-732		1 Nameplate Plastic DKS Big
	11 1801-009		2 Battery 12V 3.4 AmpHour
	15 2600-440		1 Bearing Used in Slide Oper
	17 2600-453		1 Bearing Holder Plastic Back
	20 2600-053		1 Bearing - Thrust 3/4 ID
	21 2600-731		1 Gasket Switch Cover
	25 2600-533		1 Switch Cover Doorking Lockable
	30 2600-694		1 Belt - AX36
	31 2600-688		1 Belt - 17" 4L170 Cogged
	35 2600-965		1 Bracket Idler Left 9150
	40 2600-966		1 Bracket Idler Right 9150
	45 2600-938		1 Radio Tray 910
	50 2600-810		5 Bushing 7/8 Poke Thru Flaps
	60 2600-871		2 Bushing 1/2"ODx5/16"IDx1 5/16L
	65 2801-004		1 Clutch Pad 5" OD - 3/4" ID
	70 2600-945		2 Cover Plastic Insulator
	75 9150-006		1 Cover Plastic Model 9150
	80 4602-010		1 PCB Slide Gate Operator
	81 2340-010		1 PCB Battery Backup
	83 2599-034		1 Label Gate Operator
	87 2615-153		4 Bolt Hex Head 5/16-18 x 3/4
	90 2615-155		2 Bolt Hex Head 5/16-18 x 1 3/4
	95 2600-932		1 Door Model 9150
	100 2600-880		1 Hole Plug Plastic for 3/8 Hole
	105 2600-984		1 Housing-Model 9150
	110 4001-035		1 Lock N16058BDxSFx2K Key 16120
	113 1702-503		1 Cam 1.1/4
	120 2600-163		1 Motor Assy 1HP Dual Pulley
	122 2600-197		1 Motor 24VDC For BB
	123 2600-867		1 Bracket Motor Mt Model 915 BBU
	130 2600-917		1 Jam Nut Magnet Subassy 910/915
	135 2902-006		3 Nut Nylon Lock 10-32
	140 2620-411		20 Nut Hex Flange Lock 5/16-18
	145 2902-003		20 Nut Nylon Lock 6-32
	147 2620-409		11 Nut Hex Flange Lock 1/4-20
	148 2620-340		4 Nut Center Lock 1/4-20
	150 2600-962		1 Mount Plate PC Board Mod 9150
	155 1200-028		2 Outlet Snap-In Leviton 1306
	160 2600-957		1 Pulley 10 inch Aluminum Assy
	165 2600-848		2 Resistor Power 1 ohm 30 Watt
	170 2600-847		2 Resistor Power 1 ohm 65 watt
	175 2616-006		8 Screw Phillips Head 6-32x3/16
	180 2616-002		9 Screw Phillips Head 6-32 x 1/2
	185 2616-001		3 Screw Phillips Head 6-32 x 3/8
	190 2616-000		8 Screw Phillips Head 6-32 x 1/4
	195 2616-007		2 Screw Phillips Head 6-32x5/8"

197 2616-051	2 Screw Phillips 10-32x3/8
198 2616-052	1 Screw Phillips Head 10-32 x1/2
200 2600-887	4 Screw Nylon Phillips 6-32x1/4"
203 2900-918	3 Standoff Aluminum 1 1/4" 6-32
205 2600-904	1 Main Shaft Assembly
210 2600-931	1 Bracket Shaft Support 915
211 2600-560	1 Battery Tray 910/1601
215 2600-860	1 Solenoid Lock Assy 91XX
220 2600-446	1 Spring-Compression
234 2600-487	1 Bracket Solenoid Support
235 1601-140	1 Switch Toggle 2 Pole On-Off
236 1601-041	1 Switch Toggle SPST 2POS
237 1506-071	1 Tone Generator Loud
238 1812-005	1 Switch Push Button N.O.
240 2901-002	1 Terminal 18 Pin
243 3130-008	1 Terminal Block 5 pin
245 2600-886	2 Idler Wheel UHMW
250 2600-840	2 Jumper- Ring Tongue #8 Screw
254 2600-473	1 Marker Strip 460V 3Phase
255 3129-005	1 Terminal Block Cover 5 Positio
255 3130-008	1 Terminal Block 5 pin
257 4001-096	1 Transformer 460/230/208-115V
260 2600-439	1 Washer Cup - Brass
265 2600-344	1 Washer 1 1/8"OD x 3/4"ID
266 2600-990	1 Washer Neoprene 1.5"x.725"x125
270 2600-345	1 Washer Hardened 1 1/4 x 3/4 ID
273 2620-035	1 Washer 4"ODx3/4"ID
274 2620-028	6 Washer 5/16" USS
275 2620-053	2 Lockwasher 5/16"
280 2600-619	9 Wire Clip-5/8" Concord 770-1209
285 2600-639	6 Wire Clamp-1"
290 2600-987	1 Wire Set 9150 Operator 1HP
291 2340-164	1 Wire Set BB 6100,6300,9150
292 7082-135	1 Wire 9" Red Stranded 14AWG
293 7082-136	1 Wire 9" Blue Stranded 14AWG
294 7082-137	1 Wire 5" Green Stranded 14AWG
295 1804-031	20 Tie Wrap 4"
296 7082-052	1 Wire 8" Green 16 AWG Stranded
297 2600-749	2 Wire Connector STA-KON RC6
300 4001-018	7 Weather Stripping 50' rolls
306 2340-065	1 Manual
310 2599-008	1 Label Patent
315 2599-006	1 Decal SUPPLY GND
320 2599-199	1 Label Universal
335 2599-014	1 Decal Copper Wire Only
340 2599-100	2 Sign Warning