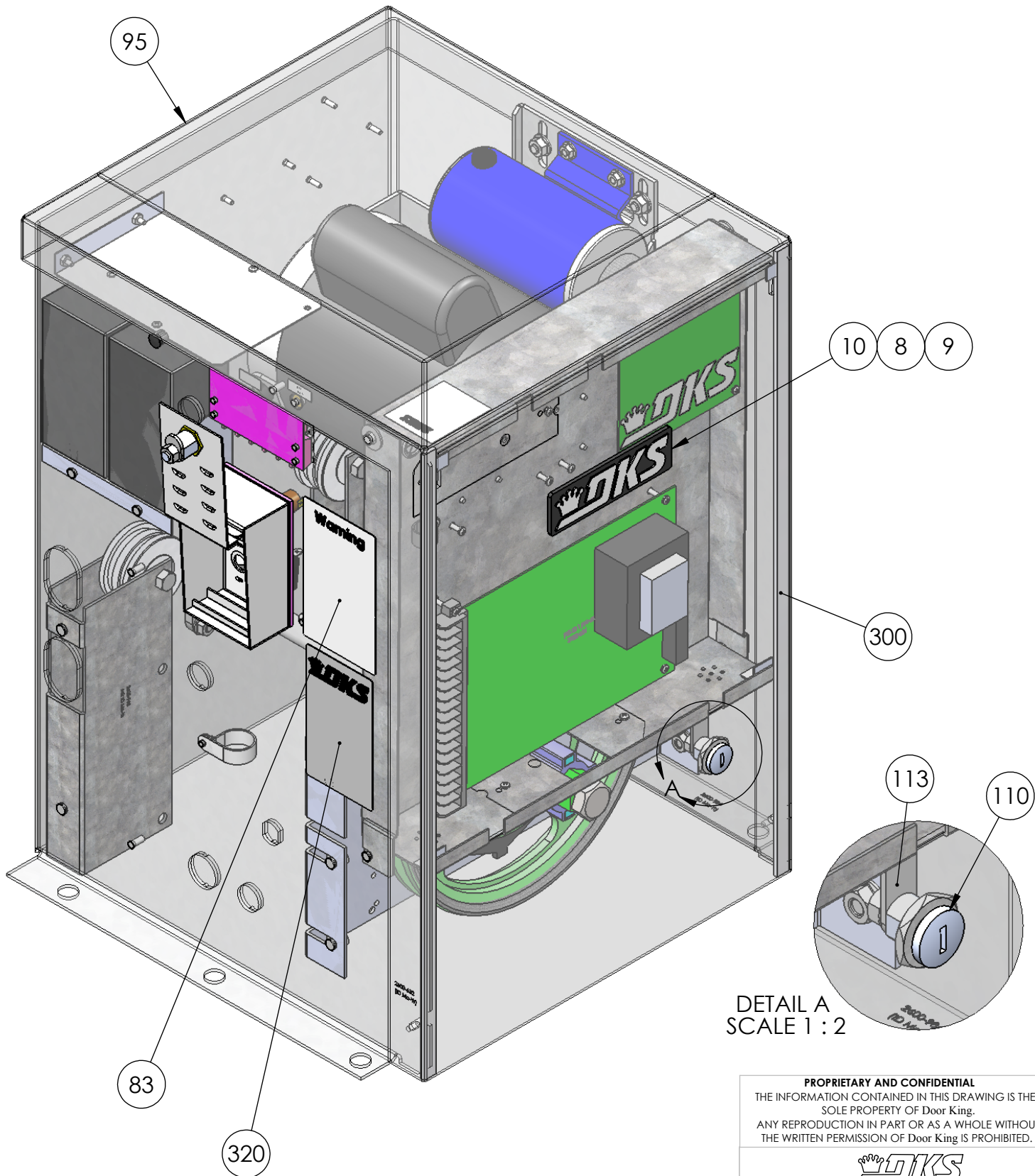



REV	REVISIONS DESCRIPTION	DATE	APPR
L	Remove 2600-440 Bearing and 2600-453 Holder, Replace with Bearing Assy Kit 2600-466	6/15/2012	DC



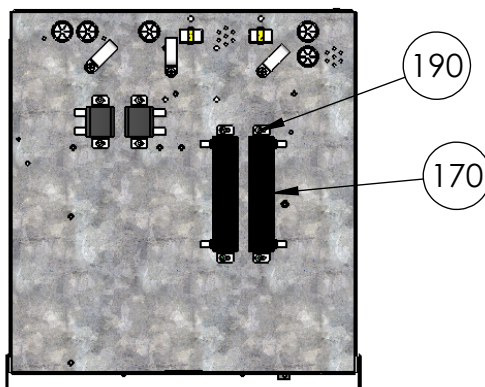
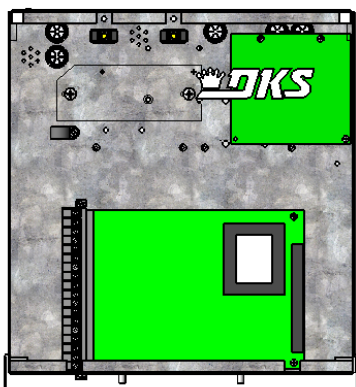
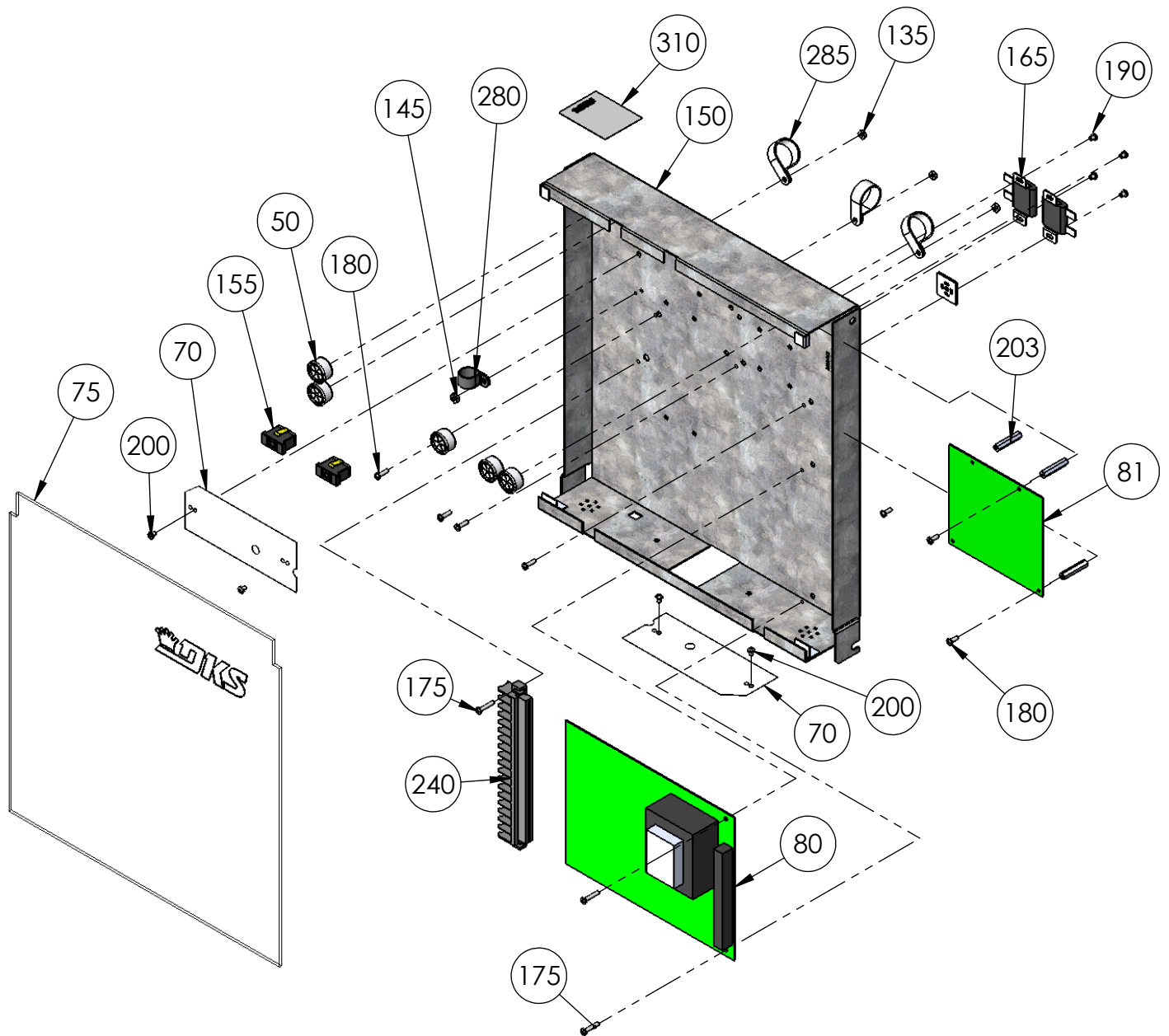
DETAIL A
SCALE 1 : 2

PROPRIETARY AND CONFIDENTIAL
 THE INFORMATION CONTAINED IN THIS DRAWING IS THE
 SOLE PROPERTY OF Door King.
 ANY REPRODUCTION IN PART OR AS A WHOLE WITHOUT
 THE WRITTEN PERMISSION OF Door King IS PROHIBITED.



Model 9150-083
 1Hp 230 Volt Convenience Open

SIZE A	DWG 9150-883	REV L
SCALE: 1:12		SHEET 1 of 5



PROPRIETARY AND CONFIDENTIAL
 THE INFORMATION CONTAINED IN THIS DRAWING IS THE
 SOLE PROPERTY OF Door King.
 ANY REPRODUCTION IN PART OR AS A WHOLE WITHOUT
 THE WRITTEN PERMISSION OF Door King IS PROHIBITED.



Model 9150-083
1Hp 230Volt Convenience Open

SIZE	DWG	REV
A	9150-883	L
SCALE: 1:24		SHEET 3 of 5

ITEM	PART #	U/M	DESCRIPTION	REV. L
1	9150-066	1 EA	Manual Installation	
7	2600-852	1 EA	Accessory Box 9150 Operator	
8	1897-050	2 EA	Gasket Support Thick 1/16"	
9	2802-040	2 EA	Washer Push on Clamp	
10	2600-732	1 EA	Nameplate Plastic DKS Big	
11	1801-009	2 EA	Battery 12V 3.4 AmpHour	
19	2600-466	1 EA	Bearing Assembly Rear 910/915	
20	2600-053	1 EA	Bearing - Thrust 3/4 ID	
21	2600-731	1 EA	Gasket Switch Cover	
25	2600-533	1 EA	Switch Cover Doorking Lockable	
30	2600-694	1 EA	Belt - AX36	
31	2600-688	1 EA	Belt - 17" 4L170 Cogged	
35	2600-965	1 EA	Bracket Idler Left 9150	
40	2600-966	1 EA	Bracket Idler Right 9150	
45	2600-938	1 EA	Radio Tray 910	
50	2600-810	5 EA	Bushing 7/8 Poke Thru Flaps	
60	2600-871	2 EA	Bushing 1/2"ODx5/16"IDx1 5/16L	
65	2801-004	1 EA	Clutch Pad 5" OD - 3/4" ID	
70	2600-945	2 EA	Cover Plastic Insulator	
75	9150-006	1 EA	Cover Plastic Model 9150	
80	4602-010	1 EA	PCB Slide Gate Operator	
81	2340-010	1 EA	PCB Battery Backup	
83	2599-034	1 EA	Label Gate Operator	
87	2615-153	4 EA	Bolt Hex Head 5/16-18 x 3/4	
90	2615-155	2 EA	Bolt Hex Head 5/16-18 x 1 3/4	
95	2600-932	1 EA	Door Model 9150	
100	2600-880	1 EA	Hole Plug Plastic for 3/8 Hole	
105	2600-984	1 EA	Housing-Model 9150	
110	4001-035	1 EA	Lock N16058BDxSFx2K Key 16120	
113	1702-503	1 EA	Cam 1.1/4	
120	2600-163	1 EA	Motor Assy 1HP Dual Pulley	
122	2600-197	1 EA	Motor 24VDC For BB	
123	2600-867	1 EA	Bracket Motor Mt Model 915 BBU	
130	2600-917	1 EA	Jam Nut Magnet Subassy 910/915	
135	2902-006	3 EA	Nut Nylon Lock 10-32	
140	2620-411	20 EA	Nut Hex Flange Lock 5/16-18	
145	2902-003	20 EA	Nut Nylon Lock 6-32	
147	2620-409	11 EA	Nut Hex Flange Lock 1/4-20	
148	2620-340	4 EA	Nut Center Lock 1/4-20	
150	2600-962	1 EA	Mount Plate PC Board Mod 9150	
155	1200-028	2 EA	Outlet Snap-In Leviton 1306	
160	2600-957	1 EA	Pulley 10 inch Aluminum Assy	
165	2600-848	2 EA	Resistor Power 1 ohm 30 Watt	
170	2600-847	2 EA	Resistor Power 1 ohm 65 watt	
173	2616-001	4 EA	Screw Phillips Head 6-32 x 3/8	
175	2616-006	8 EA	Screw Phillips Head 6-32x3/16	
180	2616-002	9 EA	Screw Phillips Head 6-32 x 1/2	
190	2616-000	8 EA	Screw Phillips Head 6-32 x 1/4	
195	2616-007	2 EA	Screw Phillips Head 6-32x5/8"	
197	2616-051	2 EA	Screw Phillips 10-32x3/8	
198	2616-052	1 EA	Screw Phillips Head 10-32 x1/2	
200	2600-887	4 EA	Screw Nylon Phillips 6-32x1/4"	
203	2900-918	3 EA	Standoff Aluminum 1 1/4" 6-32	
205	2600-904	1 EA	Main Shaft Assembly	

			
Model 9150-083 1HP 230Volt Convenience Open			
SIZE A	DWG	9150-883	REV L
SCALE:1:24		SHEET 4 of 5	

ITEM	PART #	U/M	DESCRIPTION	REV. L
210	2600-931	1 EA	Bracket Shaft Support 915	
211	2600-560	1 EA	Battery Tray 9150	
215	2600-860	1 EA	Solenoid Lock Assy 91XX	
220	2600-446	1 EA	Spring-Compression	
234	2600-487	1 EA	Bracket Solenoid Support	
235	1601-140	1 EA	Switch Toggle 2 Pole On-Off	
236	1601-041	1 EA	Switch Toggle SPST 2POS	
237	1506-071	1 EA	Tone Generator Loud	
238	1812-005	1 EA	Switch Push Button N.O.	
240	2901-002	1 EA	Terminal 18 Pin	
245	2600-886	2 EA	Idler Wheel UHMW	
250	2600-840	2 EA	Jumper- Ring Tongue #8 Screw	
254	2600-469	1 EA	Marker Strip 230V 1Phase	
255	3130-008	1 EA	Terminal Block 5 pin	
256	3129-005	1 EA	Terminal Block Cover 5 Positio	
257	4001-096	1 EA	Transformer 460/230/208-115V	
260	2600-439	1 EA	Washer Cup - Brass	
265	2600-344	1 EA	Washer 1 1/8"OD x 3/4"ID	
266	2600-990	1 EA	Washer Neoprene 1.5"x.725"x125	
270	2600-345	1 EA	Washer Hardened 1 1/4 x 3/4 ID	
273	2620-035	1 EA	Washer 4"ODx3/4"ID	
274	2620-028	6 EA	Washer 5/16" USS	
275	2620-053	2 EA	Lockwasher 5/16"	
280	2600-619	9 EA	Wire Clp-5/8" Concord 770-1209	
285	2600-639	6 EA	Wire Clamp-1"	
290	2600-987	1 EA	Wire Set 9150 Operator 1HP	
291	2340-164	1 EA	Wire Set BB 6100,6300,9150	
292	7082-135	1 EA	Wire 9" Red Stranded 14AWG	
293	7082-136	1 EA	Wire 9" Blue Stranded 14AWG	
294	7082-137	1 EA	Wire 5" Green Stranded 14AWG	
295	1804-031	20 EA	Tie Wrap 4"	
296	7082-052	1 EA	Wire 8" Green 16 AWG Stranded	
297	2600-749	2 EA	Wire Connector STA-KON RC6	
300	4001-018	7 FT	Weather Stripping 50' rolls	
306	2340-065	1 EA	Manual	
310	2599-008	1 EA	Label Patent	
315	2599-006	1 EA	Decal SUPPLY GND	
320	2599-199	1 EA	Label Universal	
335	2599-014	1 EA	Decal Copper Wire Only	
340	2599-100	2 EA	Sign Warning	

			
Model 9150-083			
1HP 230Volt Convenience Open			
SIZE	DWG	REV	
A		9150-883	L
SCALE: 1:24		SHEET 5 of 5	