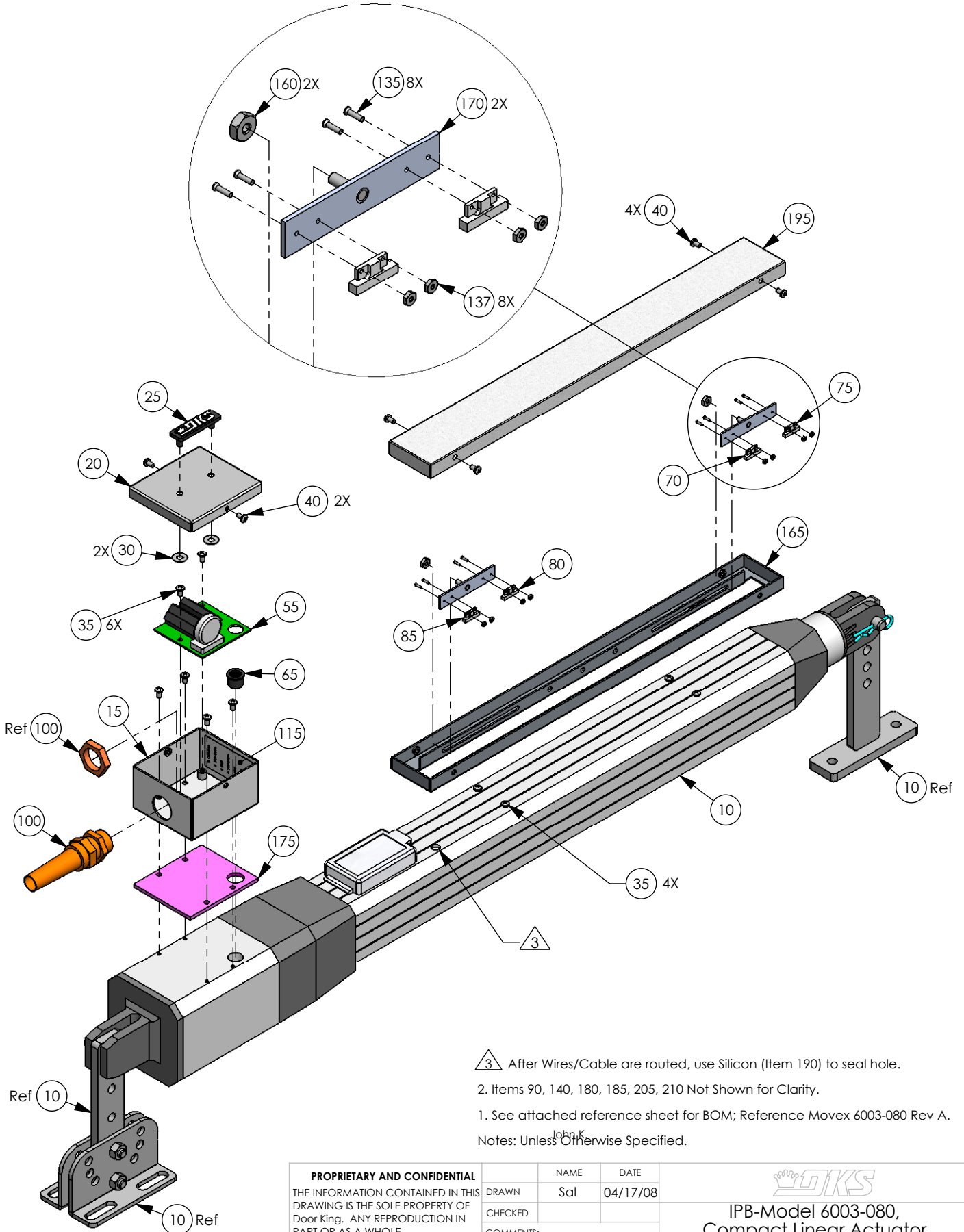



REVISIONS

EO	REV	DESCRIPTION	Drawn	APPR
--	A	Production Release	Sal 06/12/08	D.C. 06/12/08



△ After Wires/Cable are routed, use Silicon (Item 190) to seal hole.
 2. Items 90, 140, 180, 185, 205, 210 Not Shown for Clarity.
 1. See attached reference sheet for BOM; Reference Movex 6003-080 Rev A.
 Notes: Unless Otherwise Specified.

PROPRIETARY AND CONFIDENTIAL THE INFORMATION CONTAINED IN THIS DRAWING IS THE SOLE PROPERTY OF Door King. ANY REPRODUCTION IN PART OR AS A WHOLE WITHOUT THE WRITTEN PERMISSION OF Door King IS PROHIBITED.	NAME	DATE	 IPB-Model 6003-080, Compact Linear Actuator SIZE DWG. NO. 6003-880 REV. A Scale: None SHEET 1 OF 2	
	DRAWN	Sal		04/17/08
	CHECKED			
	COMMENTS:			

ITEM PART NUMBER UNITS DESCRIPTION

1	6003-880	1 EA	Illustrated Parts Breakdown
2	6003-066	1 EA	Manual Install Quick Start
5	2616-575	8 EA	Flat Phil Screw 10-32x1/2"
10	6003-010	1 EA	Actuator Linear Compact 24VDC
15	6010-102	1 EA	Wiring Box 6002 DC Actuator
20	6010-103	1 EA	Box Cover 6002 DC Actuator
25	2600-734	1 EA	Nameplate Plastic DKS Small
30	2802-040	2 EA	Washer Push on Clamp
35	1804-016	10 EA	Screw Truss Head 6-32 x 3/16"
40	2600-288	6 EA	Screw Truss Head SS 6-32 x 3/8
55	1496-010	1 EA	PCB Hash Filter DC Operators
65	2600-820	1 EA	Bushing 1/2
70	1601-251	1 EA	Sensor Magnetic Brown Leads
75	1601-254	1 EA	Sensor Magnetic Wht/Yel Leads
80	1601-257	1 EA	Sensor Magnetic Wht/Vio Leads
85	1601-258	1 EA	Sensor Magnetic Wht/Gry Leads
90	0601-120	4 FT	Wire Control Cable ORCF2007
100	6010-015	1 EA	Strain Relief Liquid Tight
115	2599-612	1 EA	Label Model 6001/6002 Wiring
135	2620-399	8 EA	Nut Hex 00-90 Brass Zinc Plt
137	2616-031	8 EA	Screw Flat Head #0-90x1/4 Slot
140	1804-031	5 EA	Tie Wrap 4"
160	2902-003	2 EA	Nut Nylon Lock 6-32
165	6002-105	1 EA	Box Limit Actuator 6003
170	2600-562	2 EA	Magnet Plate Limit 6010,6020
175	6010-073	1 EA	Gasket Wiring Cover
180	2600-368	2 EA	Magnet .25"dx.1.25"th 30DNE1608
185	9402-053	18 IN	Tubing Flex/slit 1/4OD
190	2601-167	.05 EA	Sealant Silicon Cartridge
195	6002-110	1 EA	Cover Limit Actuator 6003