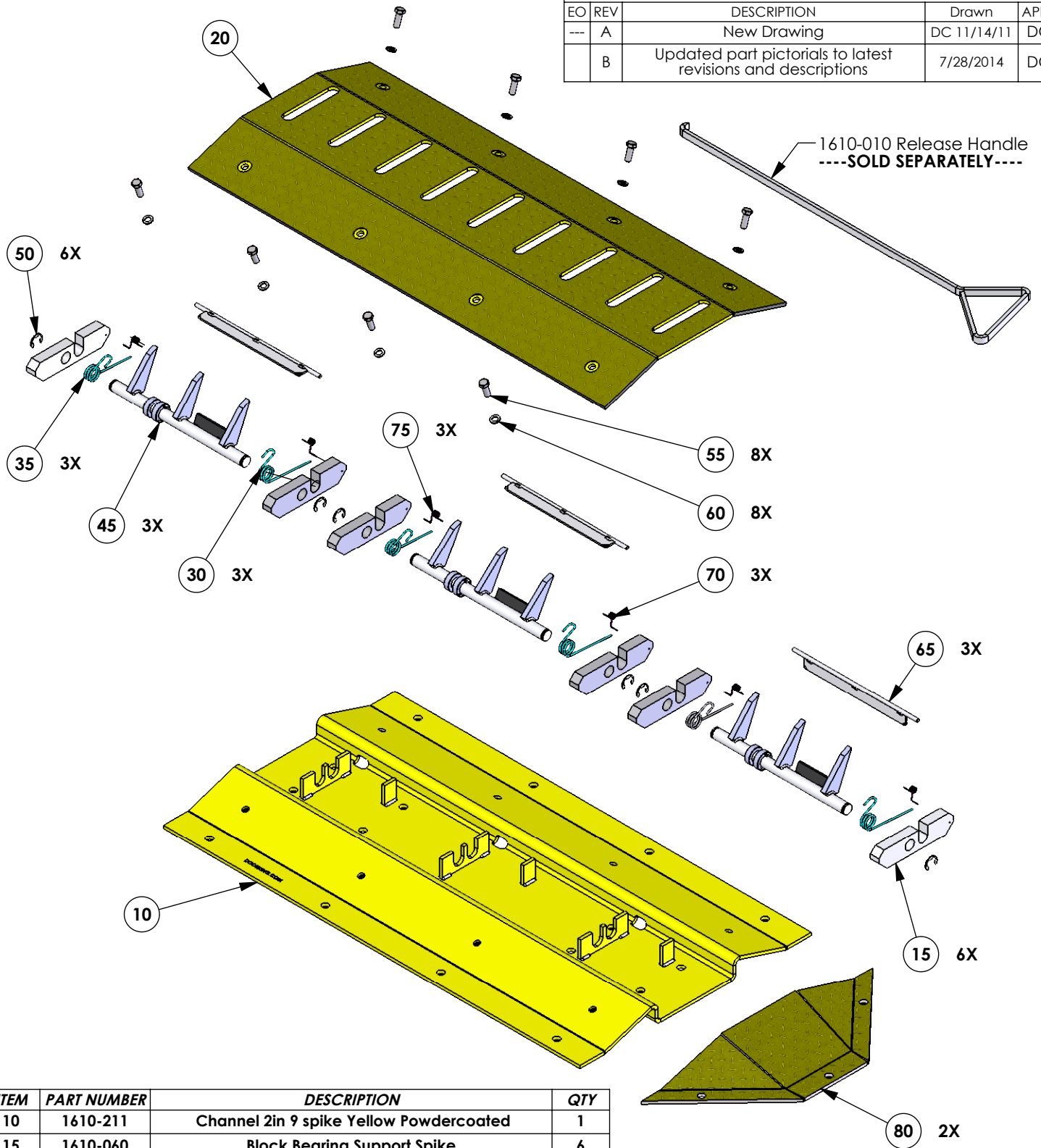



REVISIONS				
EO	REV	DESCRIPTION	Drawn	APPR
---	A	New Drawing	DC 11/14/11	DC
	B	Updated part pictorials to latest revisions and descriptions	7/28/2014	DC



ITEM	PART NUMBER	DESCRIPTION	QTY
10	1610-211	Channel 2in 9 spike Yellow Powdercoated	1
15	1610-060	Block Bearing Support Spike	6
20	1610-220	Spike Cover Slotted Tread Plate Yellow 3ft	1
30	1610-139	Spring Spike (Loop Right) 30 Deg Stainless Steel	3
35	1610-137	Spring Spike (Loop Left) 30 Deg Stainless Steel	3
45	1610-280	Shaft Assy	3
50	2630-030	Snap Ring 625 inch	6
55	2615-070	Bolt Hex 3/8-16 x1 Stainless Steel	8
60	2620-055	Washer Split 3/8-16 Stainless Steel	8
65	1610-216	Side Flap Retractable Spike	3
70	1610-143	Spring Lockdown Left 1/4" Dia Stainless	3
75	1610-141	Spring Lockdown Right 1/4" Dia Stainless	3
80	1610-240	End Cap Assy	2
95	1610-065	Manual-Also Available at www.dkaccess.com	1

1. Manual (Item 95) Not Shown for Clarity.
 Notes: Unless Otherwise Specified.

PROPRIETARY INFORMATION
 THE INFORMATION CONTAINED IN THIS DRAWING IS THE SOLE PROPERTY OF DKS DOORING. ANY REPRODUCTION IN PART OR AS A WHOLE WITHOUT THE WRITTEN PERMISSION OF DOORING IS PROHIBITED.



IPB-Model 1610-088,
Traffic Spike-Surface, 3ft Assembly

SIZE	DWG. NO.	REV.
A	1610-888	B

Scale: None SHEET 1 OF 2