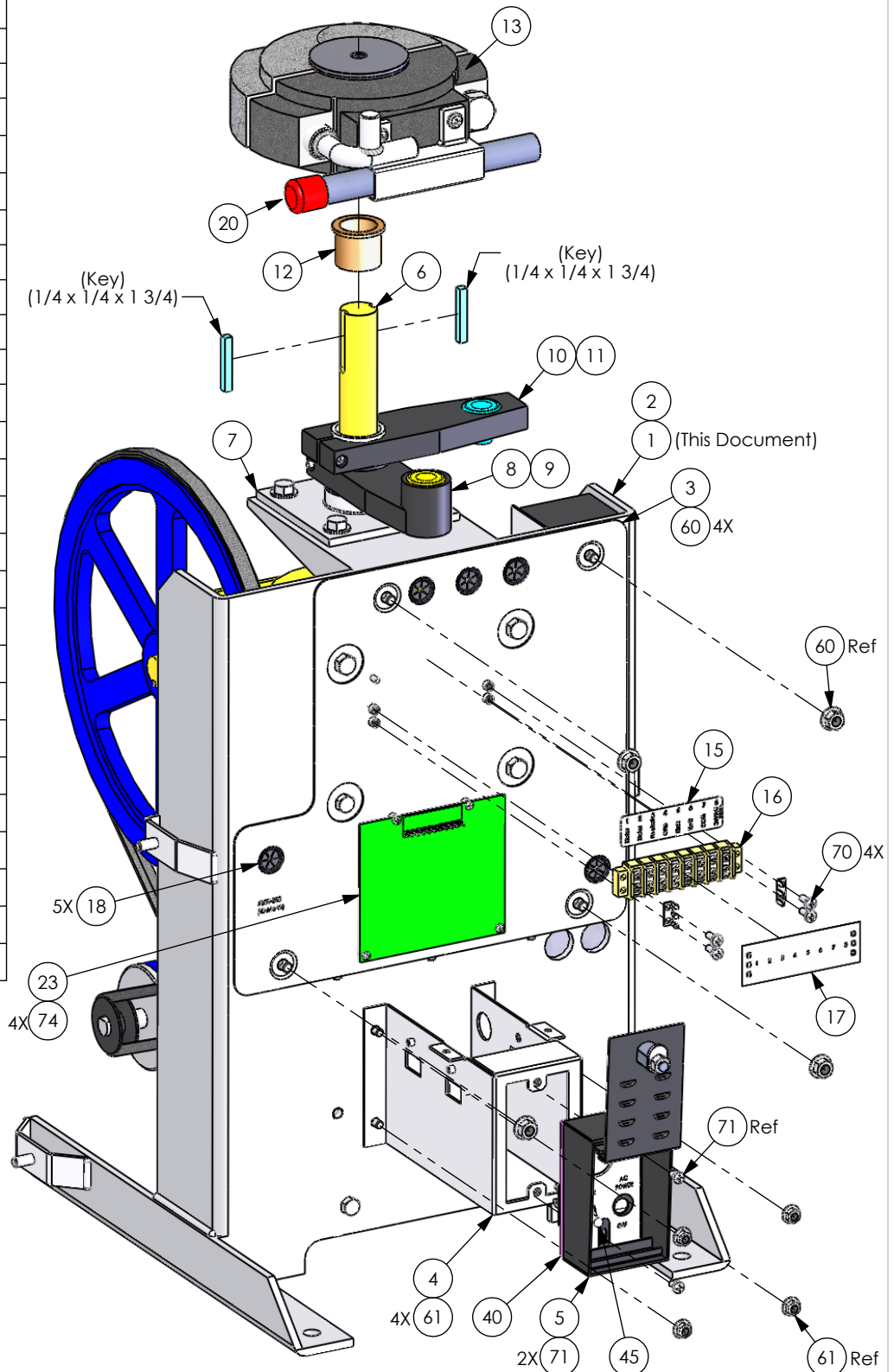


ITEM	P/N	DESCRIPTION	QTY	REVISIONS				
				EO	REV	DESCRIPTION	Drawn	APPR
1	6500-887	IPB-Model 6500-087	1	---	---	---	Sal	D.C.
2	6500-150	Base Stand	1	---	A	Production Release: Added Item 105.	03/06/08	03/06/08
3	6500-230	Mounting Plate-Slave	1	---	B	Revised Item 58 Was: 2600-688 Belt-17" 4L170 Cogged	05/16/08	05/17/08
4	6500-105	Bracket Switch Box	1	---	C	Item 45 Was: 1601-140.	09/12/08	09/12/08
5	2600-533	Sub Assy-Switch Cover	1					
6	2600-706	Gearbox	1					
7	6500-115	Collar Limit Switch Mount	1					
8	6500-030	Bracket-Plastic Limit Switch, Lower	1					
9	1601-263	Switch-Mag Sensor (Yel/Wht or Yel/Slate)	1					
10	6500-032	Bracket-Plastic Limit Switch, Upper	1					
11	1601-261	Switch-Mag Sensor (blu/Wht or Orn/Slate)	1					
12	6500-135	Bushing Bronze 1 1/8 ID	1					
13	6500-410	Sub Assy-Hub 1 HP	1					
15	2599-063	Label-8 Position Term	1					
16	3130-023	Term Strip 8 Row Screw	1					
17	3129-008	Terminal Block Cover 8 Position	1					
18	2600-810	Bushing 7/8 Poke Thru Flaps	6					
20	6500-200	Tool-Hub Clutch Release	1					
23	2340-010	PCB Battery Backup	1					
40	2600-731	Gasket Switch Cover	1					
45	1601-041	Switch Toggle SPST 2POS	1					
60	2620-411	Nut Hex Flange Lock 5/16-18	10					
61	2620-409	Nut Hex Flange Lock 1/4-20	8					
70	2616-018	Screw Phillips Head 8-32 x 1/2	4					
71	2616-051	Screw Phillips Head 10-32 x 3/8	2					
74	2616-000	Screw Phillips Head 6-32 x 1/4	4					
100	9402-053	Tubing Flex/Split 1/4 OD	2'					
101	9402-055	Tubing Flex/Split 1/2 OD	3'					
102	2600-757	Wire 9 Cond Cable	1					
103	6500-045	Wire Set Slave 6500 Operator	1					
104	2340-164	Wire Set BB 6100,6300,9150	1					
105	7082-309	Wire 18" Orange 250 Fast/Diode	1					



2. Flex Tubing, 9 Conductor Cable, & Wire Set Slave 6500 Operator (Items 100-104) not shown for clarity.

1. Reference Movex 6500-087 Rev C when modifying BOM.

Notes: Unless Otherwise Specified.

PROPRIETARY AND CONFIDENTIAL

THE INFORMATION CONTAINED IN THIS DRAWING IS THE SOLE PROPERTY OF Door King. ANY REPRODUCTION IN PART OR AS A WHOLE WITHOUT THE WRITTEN PERMISSION OF Door King IS PROHIBITED.

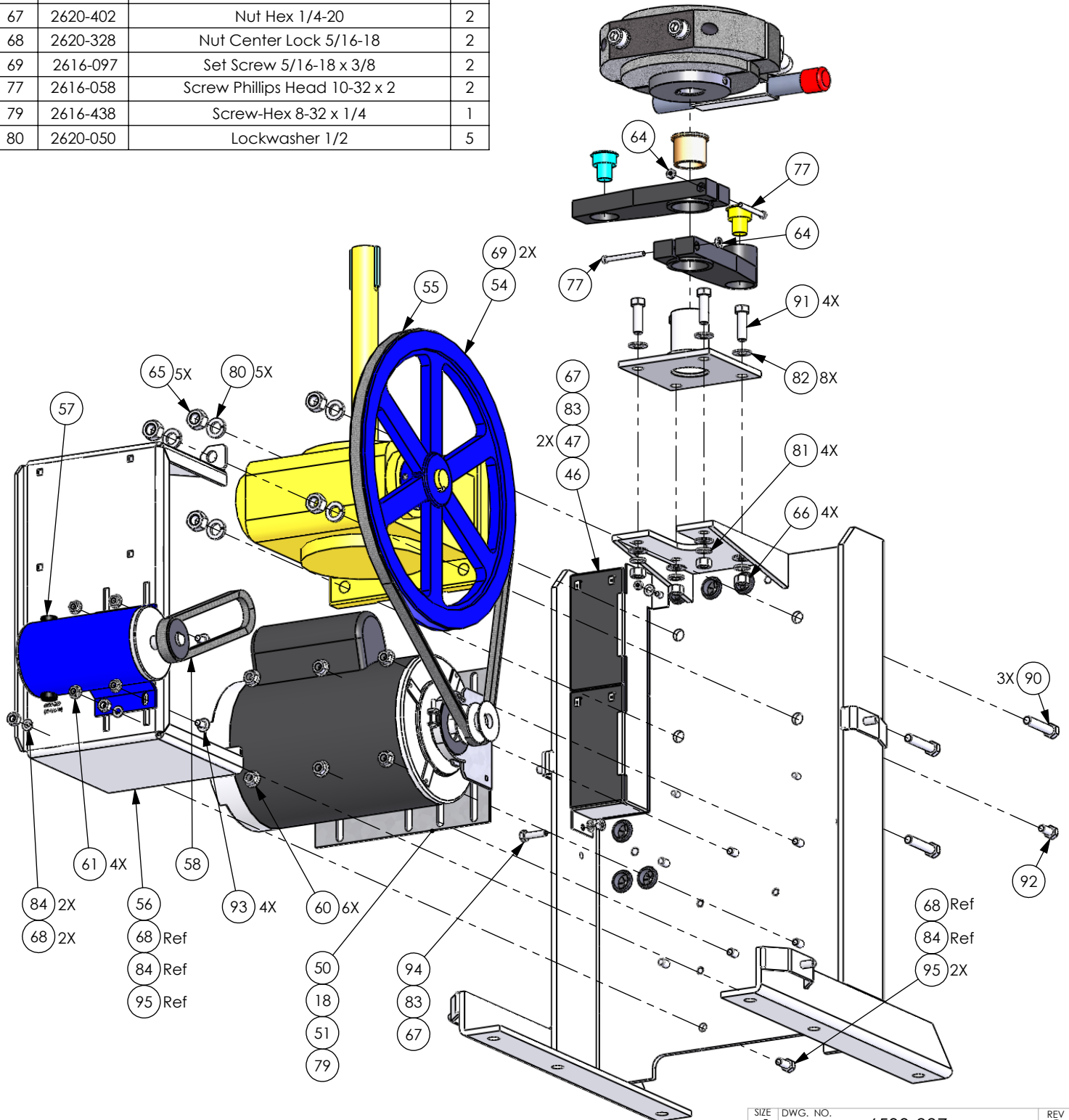


IPB-Model 6500-087, 115V, 1HP, BB, Slave

SIZE	DWG NO	REV
A	6500-887	C
Scale: None		SHEET 1 OF 3

ITEM	P/N	DESCRIPTION	QTY
46	6500-110	Bracket Battery Small	1
47	1801-009	Battery 12V 3.0 AmpHour PS1230	2
50	2600-163	Motor Assy-1 HP	1
51	2600-837	Motor Base 1 HP	1
54	2600-597	Pulley-13" x 7/8 AK134	1
55	6500-047	Belt-47" 4L470	1
56	6500-250	Base Motor Mount BBU	1
57	2600-197	24VDC Motor with Pulley	1
58	6500-018	Belt-18" 4L180	1
64	2902-006	Nut Nylon 10-32	2
65	2620-420	Nut Hex 1/2-13	5
66	2620-405	Nut Hex 3/8-16	4
67	2620-402	Nut Hex 1/4-20	2
68	2620-328	Nut Center Lock 5/16-18	2
69	2616-097	Set Screw 5/16-18 x 3/8	2
77	2616-058	Screw Phillips Head 10-32 x 2	2
79	2616-438	Screw-Hex 8-32 x 1/4	1
80	2620-050	Lockwasher 1/2	5

ITEM	P/N	DESCRIPTION	QTY
81	2620-047	Lockwasher 3/8	4
82	2620-019	Washer 3/8 SAE	8
83	2620-109	Washer 1/4 Split Lock	2
84	2620-053	Lockwasher 5/16	2
90	2615-081	Bolt Hex Head 1/2-13 x 1 3/4	3
91	2615-053	Bolt Hex Head 3/8-16 x 1 1/4	4
92	2615-084	Bolt Hex Head 1/2-13 x 2 1/2	1
93	2615-625	Bolt Carriage 1/4-20 x 1/2	4
94	2615-005	Bolt Hex Head 1/4"x20x1"	1
95	2615-153	Bolt Hex Head 5/16-18 x 3/4	2



ITEM	PART NUMBER	DESCRIPTION	QTY
78	2616-580	Nut Barrel 5/16-18 Thread	4
85	6500-450	Cover Front w/ Handle	1
86	6500-460	Cover Back w/ Labels	1
87	6500-430	Sub Assy-Arm Main	1
88	6500-440	Sub Assy-Cover Turret	1

