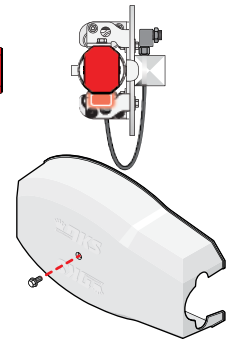
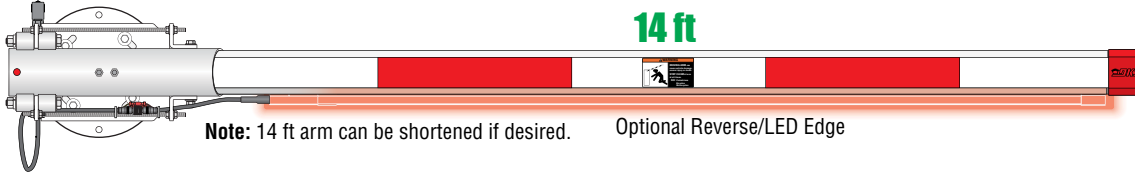


BREAK-AWAY OCTAGON ARM KIT for a 1601 / 1602

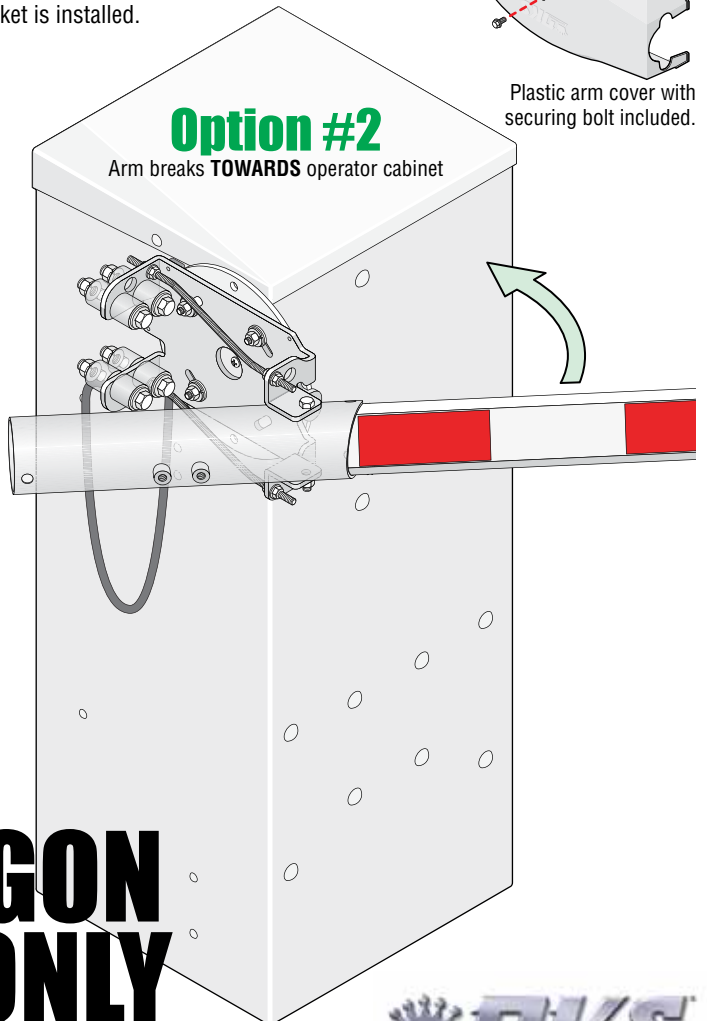
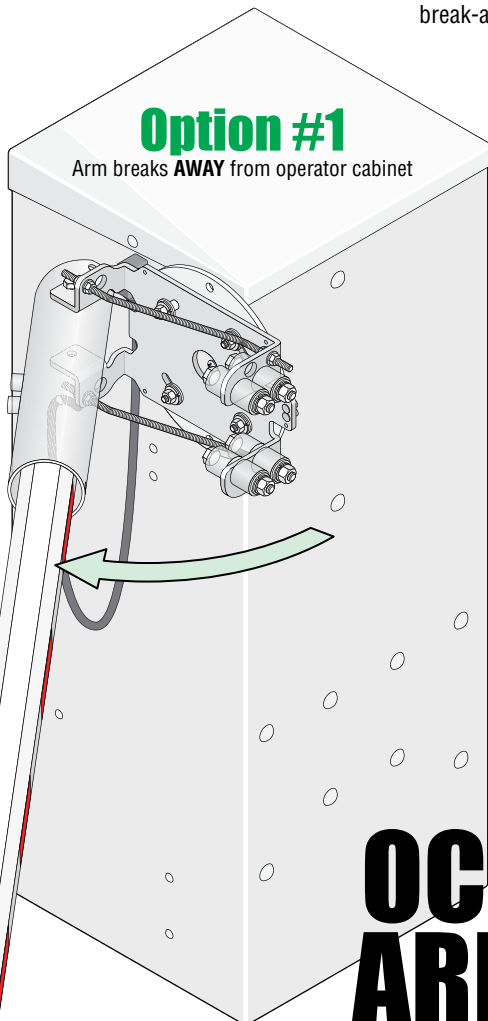
DoorKing Part Number
8080-295

This kit is designed for the 1601 **OR** a 1602 with a 17 ft arm **ONLY** barrier gate operators. It **CANNOT** be used with a 1603 auto-spikes, 1620 lane barrier or 1625 wedge barrier. The kit provides a **break-away bracket assembly** for a **OCTAGON arm** with **OR** without **Reverse/LED edge**, sold separately. Arm will reverse if lowering and an obstruction is encountered. If the arm is struck and breaks away (will pivot in **ONE DIRECTION ONLY**, see below), gate operator will **automatically** shut down. The arm manually snaps back into the release rollers to function normally again. **NO reset** is necessary.



Break-Away OCTAGON Arm Bracket Direction Options

Break-Away arm bracket will only pivot in **ONE DIRECTION** depending on which way the break-away arm bracket is installed.



OCTAGON ARM ONLY



120 S. Glasgow Avenue
Inglewood, California 90301 U.S.A.

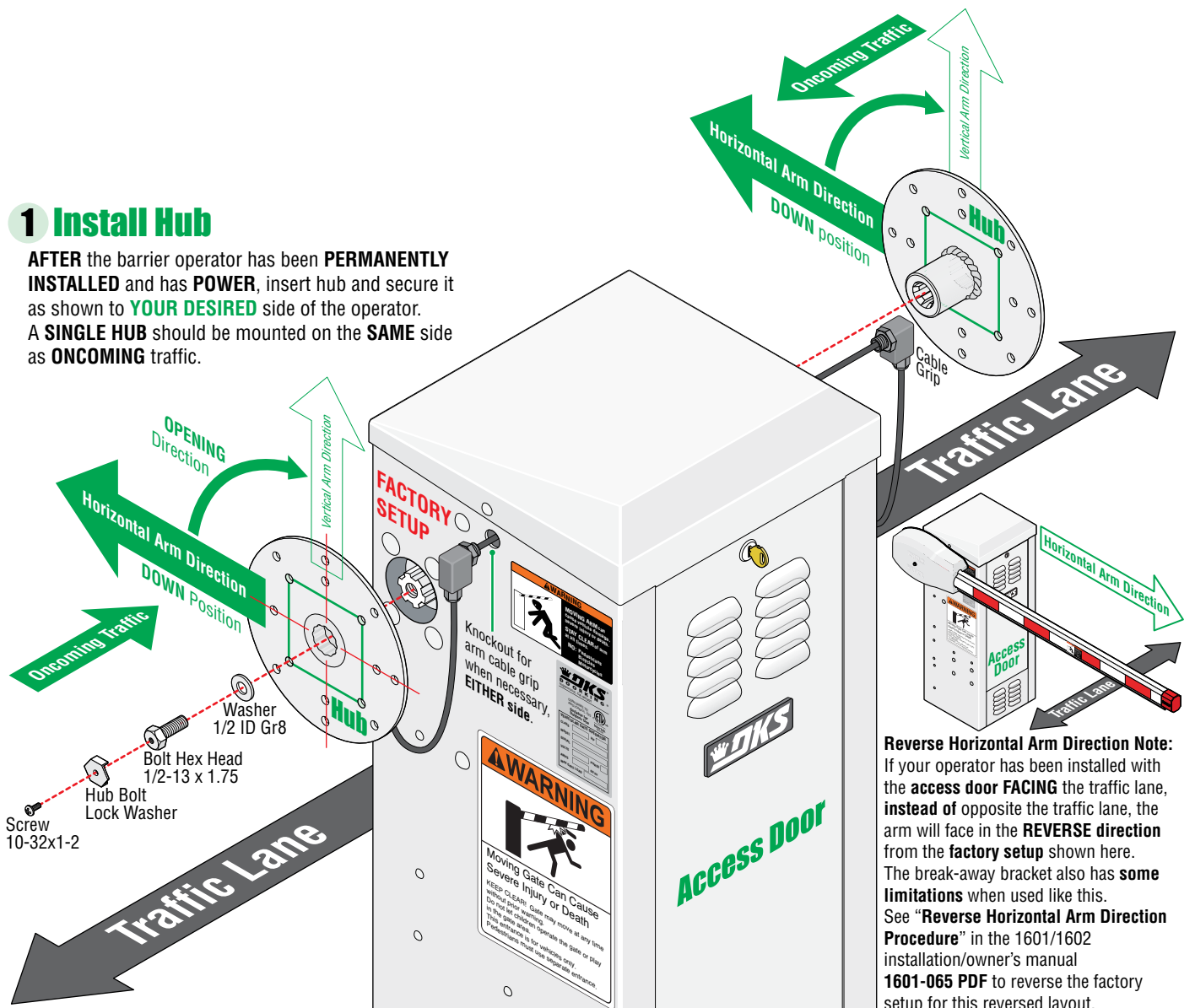
Copyright 2026 DoorKing®, Inc. All rights reserved.

Break-Away OCTAGON Arm Bracket Installation Steps:

1 Install Hub	2
2 Install Break-Away Bracket	3
3 Install Arm (Octagon)	4
4 Install Wire Harness (8080-356)	4
5 Attach Wire Harness to Break-Away Bracket	5
6 Mount Power Supply and Relay	6
7 Connect Wire Harness to Operator . . . and Wiring OPTIONS	7
8 Connect Arm to Wire Harness	8
9 Secure Wires to Break-Away Bracket	8
10 Break-Away Arm Reset Procedure	8
• 14 Ft 2-Piece Arm Assembly (Optional) (Sold Separately)	9
• Reverse Edge or Reverse/LED Edge Installation (Optional) (Sold Separately)	10
• 14 Ft Rubber Bumper Installation (Optional) (Sold Separately)	11
• Shortening a Octagon Arm to 7 Ft, 8 Ft, 11 Ft (If Using Shorter Length Reverse Edge)	12
• 17 Ft Octagon Arm Assembly for a 1602 ONLY (Optional) (Sold Separately)	13
Older Existing Arm Plastic Cover Modification (If Necessary)	14

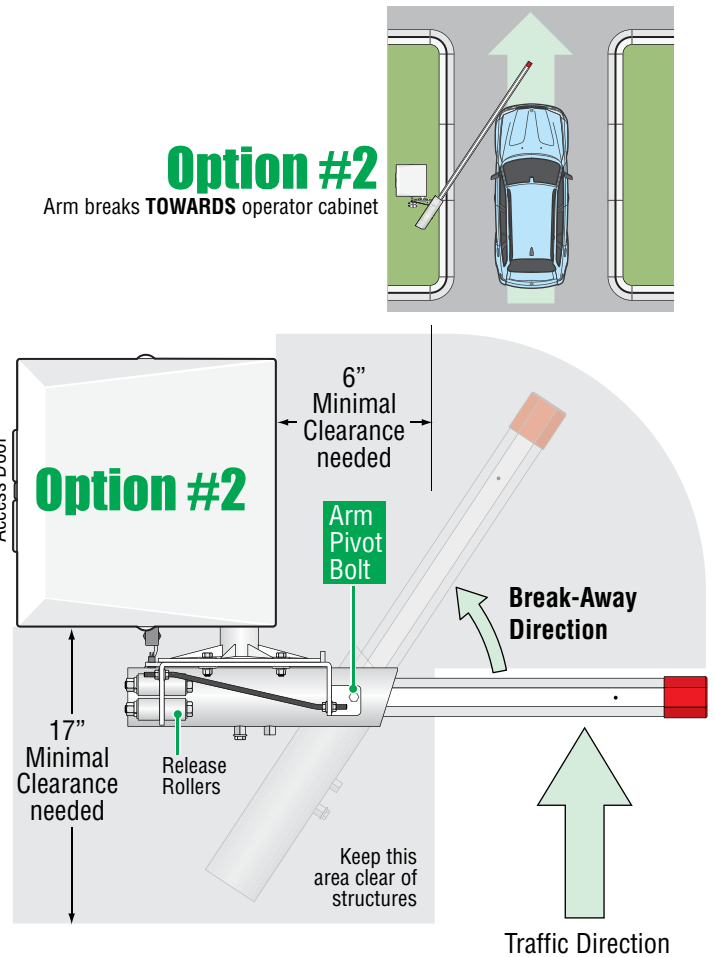
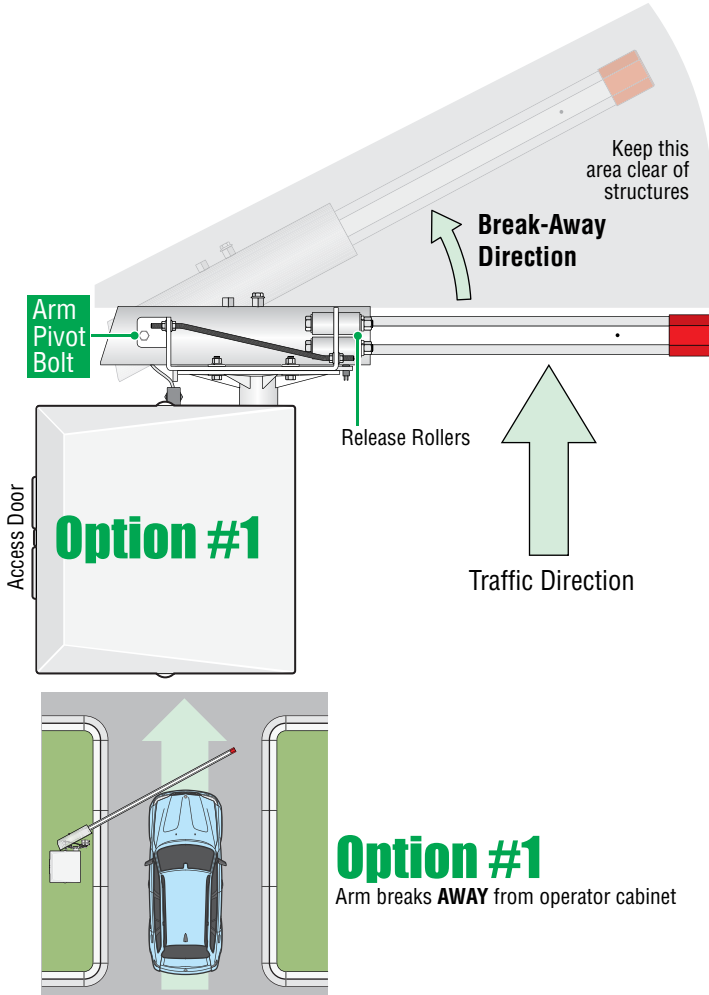
1 Install Hub

AFTER the barrier operator has been **PERMANENTLY INSTALLED** and has **POWER**, insert hub and secure it as shown to **YOUR DESIRED** side of the operator. A **SINGLE HUB** should be mounted on the **SAME** side as **ONCOMING** traffic.

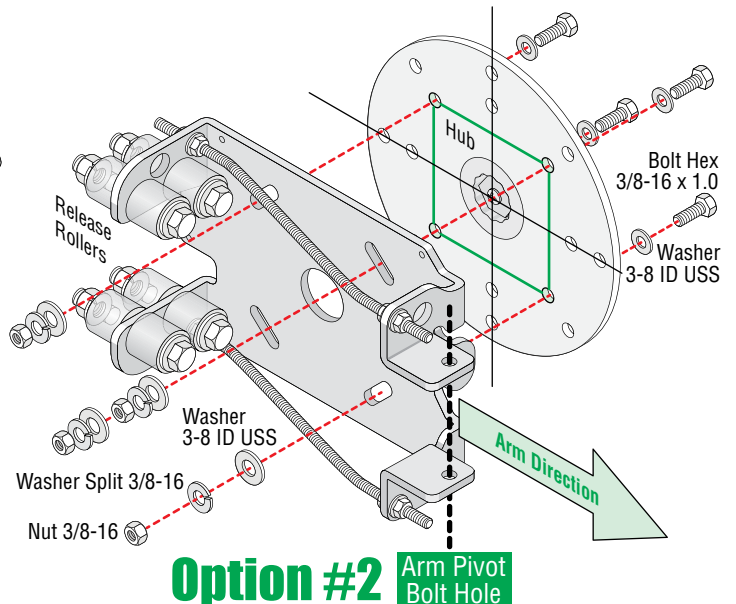
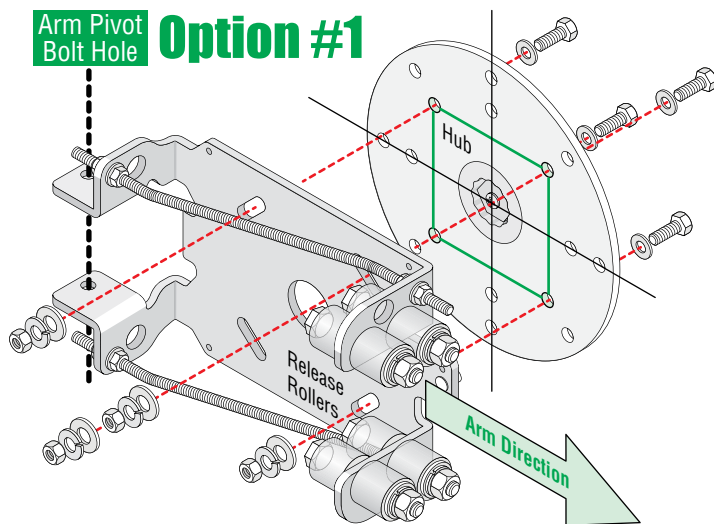


Break-Away Arm Direction Options

Arm will only pivot in **ONE DIRECTION** depending on which way the break-away arm bracket is installed. **Choose the desired break-away direction** and install break-away arm bracket accordingly (note position of **arm pivot bolt** and release rollers).



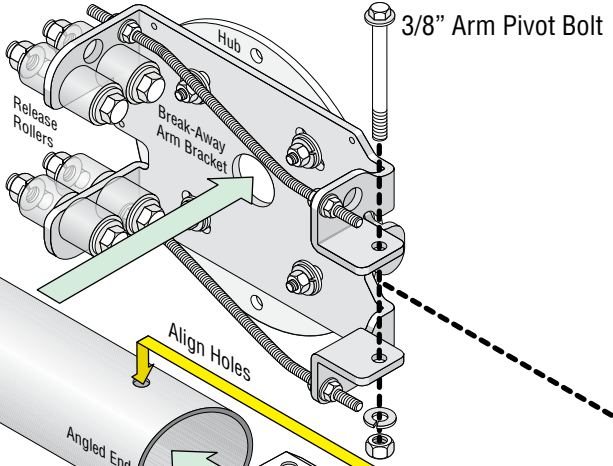
2 Install Break-Away Bracket



IMPORTANT Test the hub's **UP** and **DOWN** positions on the operator **BEFORE** installing arm bracket.
TURN OFF POWER BEFORE INSTALLING BRACKET

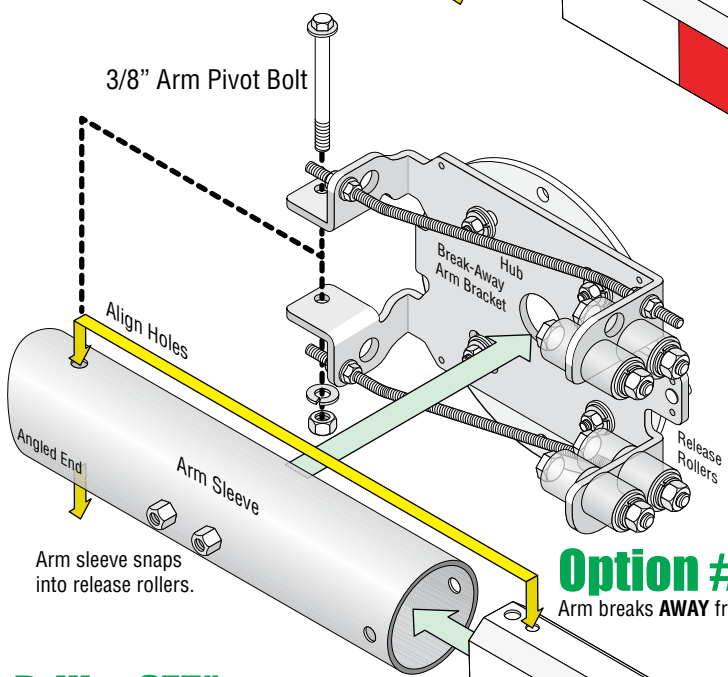
3 Install Arm

Arm sleeve snaps into release rollers.



Option #2 Hole
Arm breaks **TOWARDS** operator cabinet

3/8" Arm Pivot Bolt



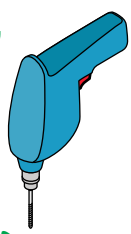
Arm sleeve snaps into release rollers.

Option #1 Hole
Arm breaks **AWAY** from operator cabinet

OCTAGON Arm Options:

- 14 Ft 1-piece arm: Optional Edge See page 10
- 14 Ft 2-piece arm: See page 9
- 17 Ft arm: See page 13

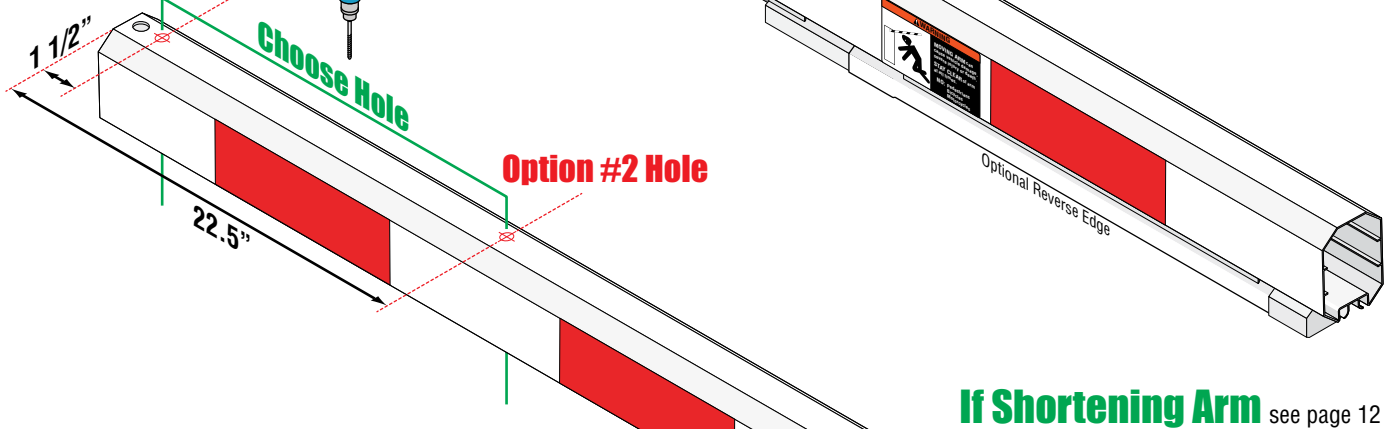
Drill a .375" Pivot Hole in Arm, Top and Bottom



Option #1 Hole

Choose Hole

Option #2 Hole



If Shortening Arm see page 12

4 Install Wire Harness (8080-356)

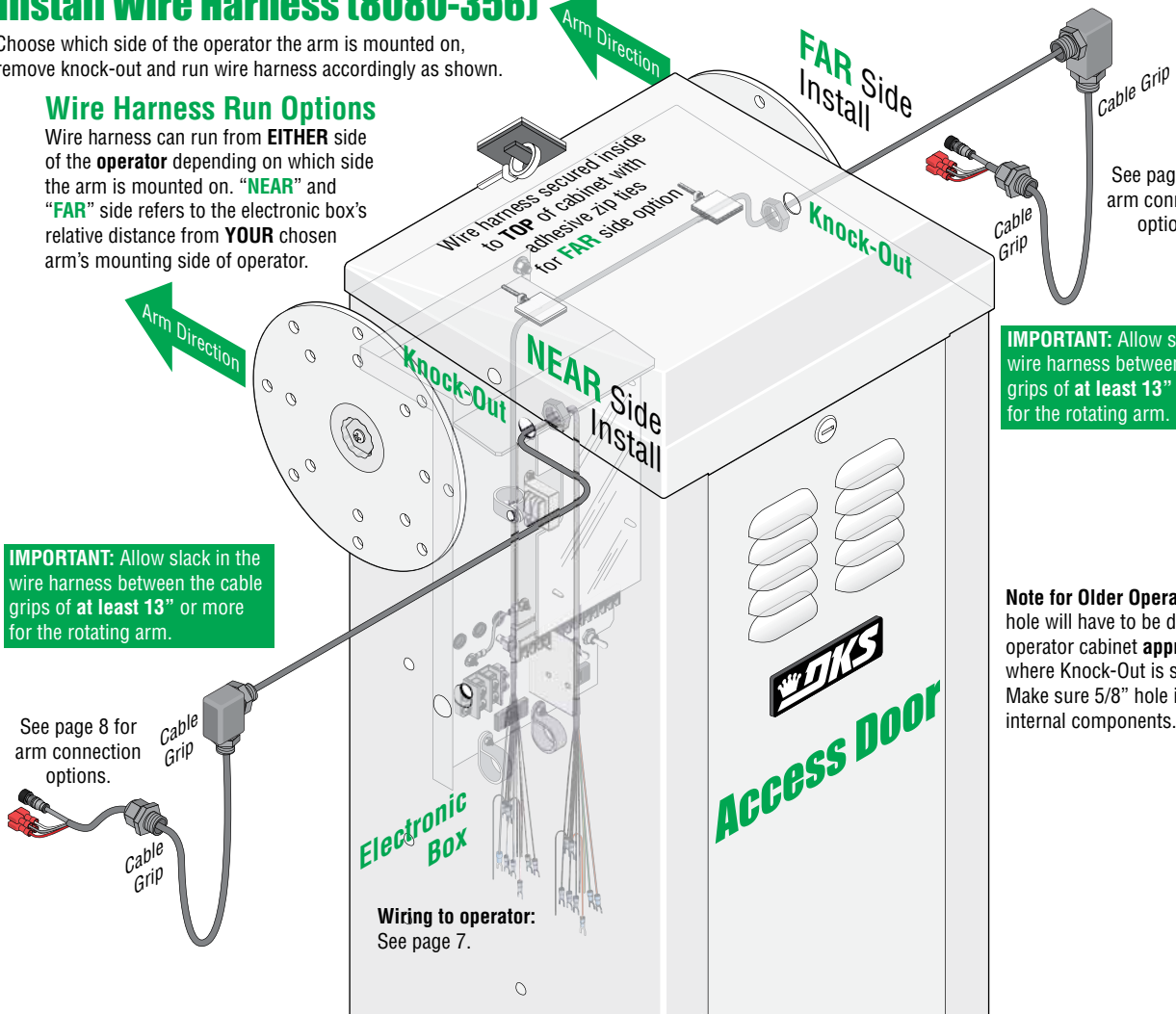
Choose which side of the operator the arm is mounted on, remove knock-out and run wire harness accordingly as shown.

Wire Harness Run Options

Wire harness can run from **EITHER** side of the **operator** depending on which side the arm is mounted on. “**NEAR**” and “**FAR**” side refers to the electronic box’s relative distance from **YOUR** chosen arm’s mounting side of operator.

IMPORTANT: Allow slack in the wire harness between the cable grips of at least 13” or more for the rotating arm.

See page 8 for arm connection options.



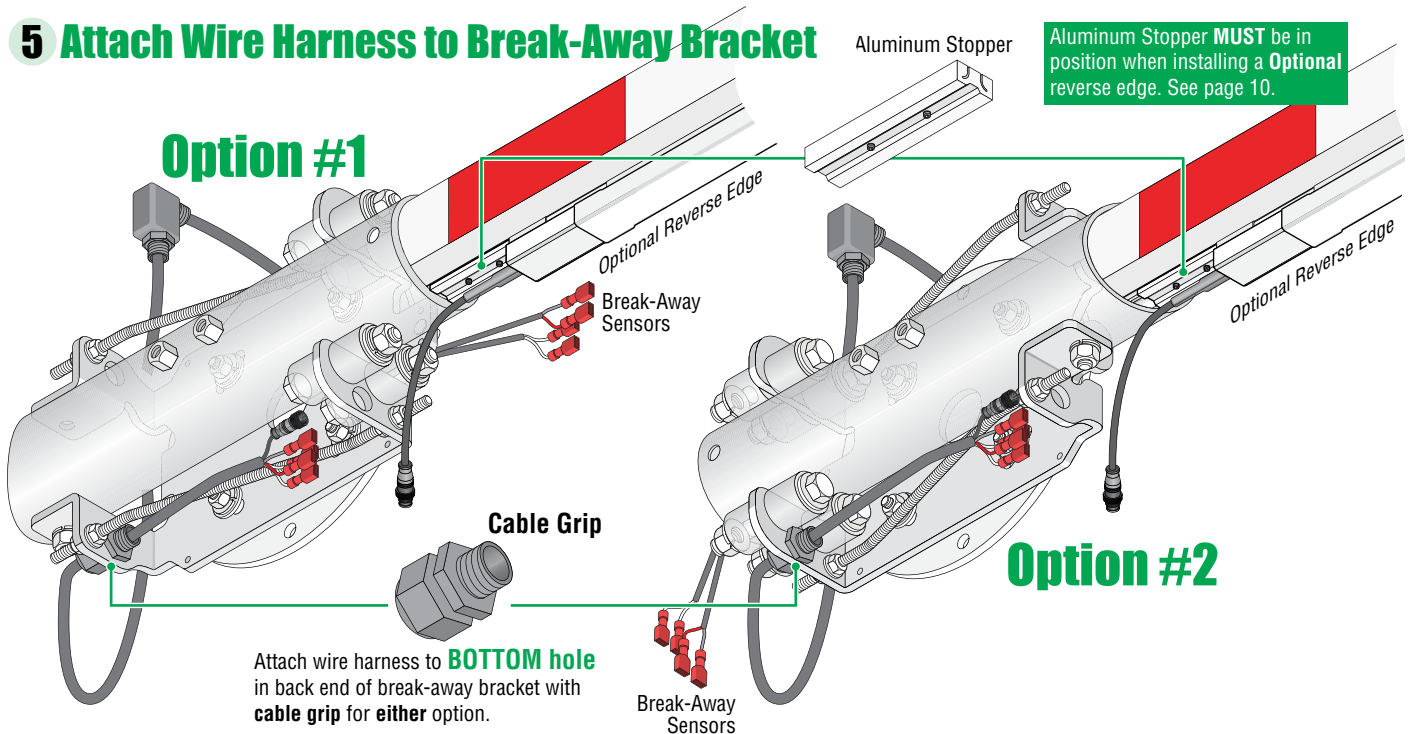
IMPORTANT: Allow slack in the wire harness between the cable grips of at least 13” or more for the rotating arm.

Note for Older Operators: A 5/8” hole will have to be drilled in the operator cabinet **approximately** where Knock-Out is shown. Make sure 5/8” hole is clear of all internal components.

Wiring to operator:
See page 7.

5 Attach Wire Harness to Break-Away Bracket

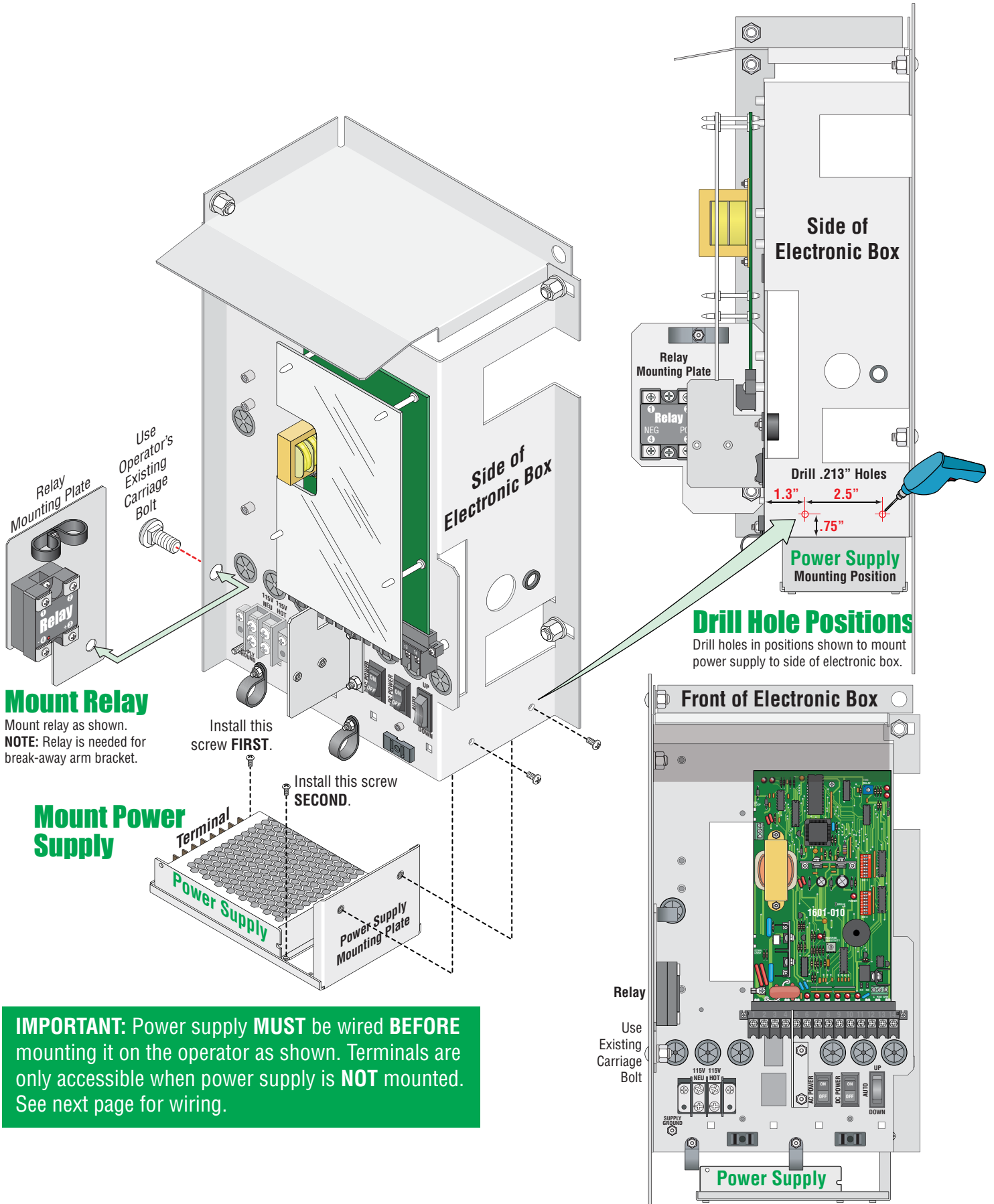
Option #1



Attach wire harness to **BOTTOM** hole in back end of break-away bracket with **cable grip** for **either** option.

See page 8 for arm connection **options** and **securing wires** to break-away bracket.

6 Mount Power Supply and Relay



Mount Relay

Mount relay as shown.
NOTE: Relay is needed for break-away arm bracket.

Mount Power Supply

Install this screw **FIRST.**

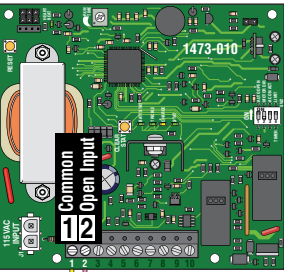
Install this screw **SECOND.**

IMPORTANT: Power supply **MUST** be wired **BEFORE** mounting it on the operator as shown. Terminals are only accessible when power supply is **NOT** mounted. See next page for wiring.

7 Connect Wire Harness to Operator ... and Wiring OPTIONS

MAKE SURE ALL POWER IS TURNED OFF TO OPERATOR!

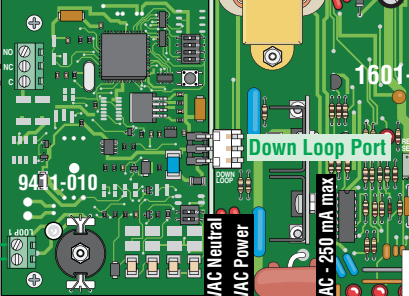
Convenience Open 1473 On SOME Model Operators



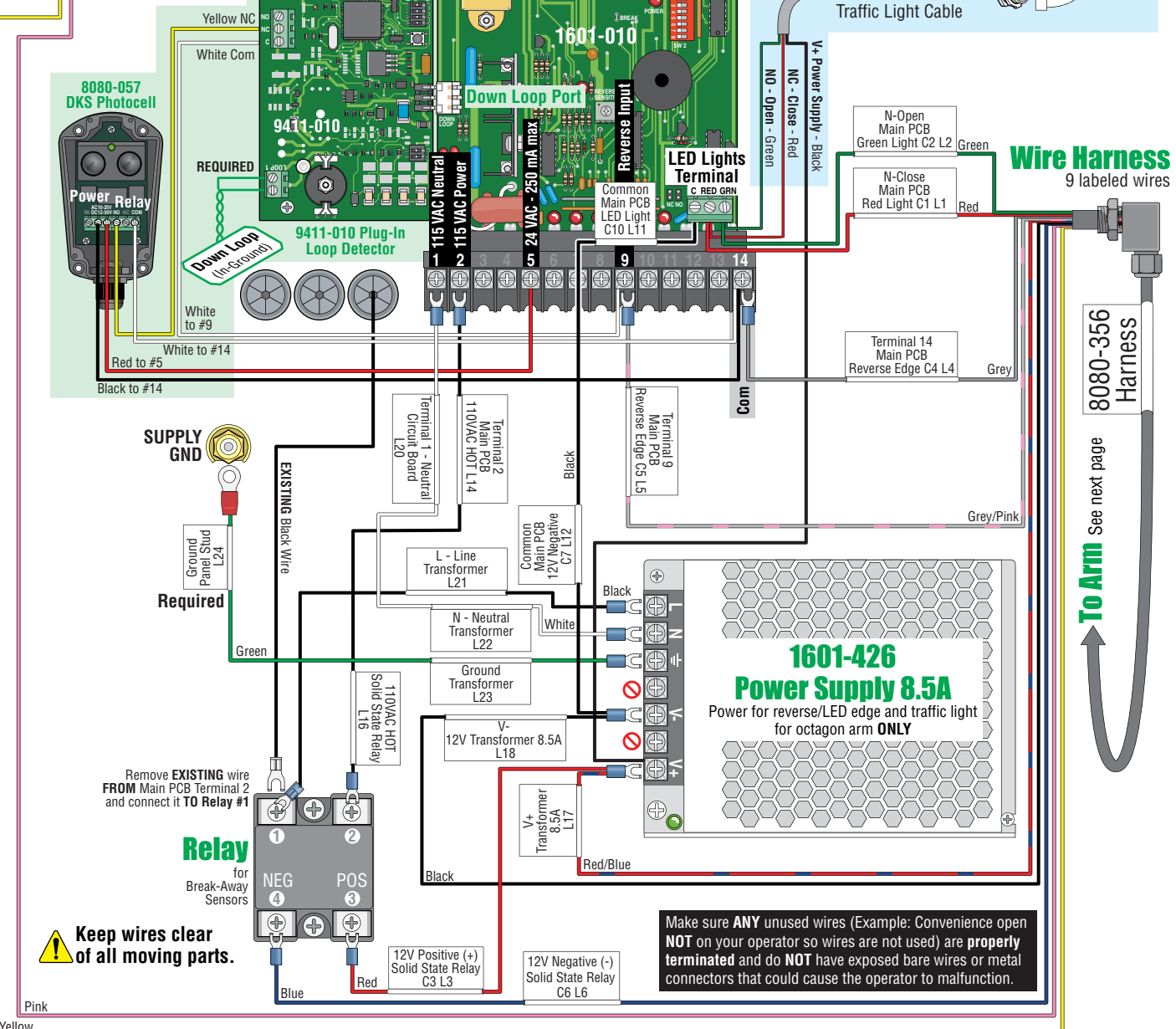
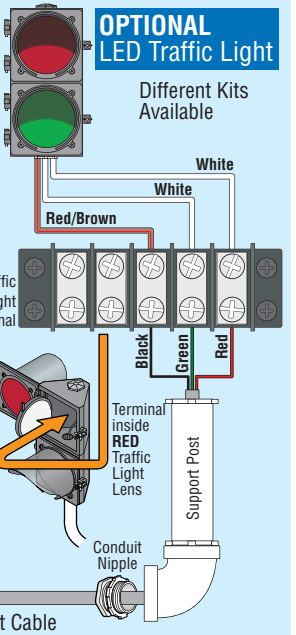
Note: Break-Away arm will NOT allow a tailgating vehicle unauthorized entry, BUT helps protect pedestrians from a lowering arm when they are in the arm's swing path. (Sold Separately)
Devices Required: Plug-in Single Channel Loop Detector with Auxiliary Relay P/N 9411-010
 DKS Photocell P/N 8080-057
 See 1601-065 PDF for more info when used.
HIGHLY Recommended

OPTIONAL DKS Pedestrian Protection System Set-up

Note: The arm will NOT allow a tailgating vehicle unauthorized entry, BUT helps protect pedestrians from a lowering arm when they are in the arm's swing path. (Sold Separately)
Devices Required: Plug-in Single Channel Loop Detector with Auxiliary Relay P/N 9411-010
 DKS Photocell P/N 8080-057
 See 1601-065 PDF for more info when used.
HIGHLY Recommended



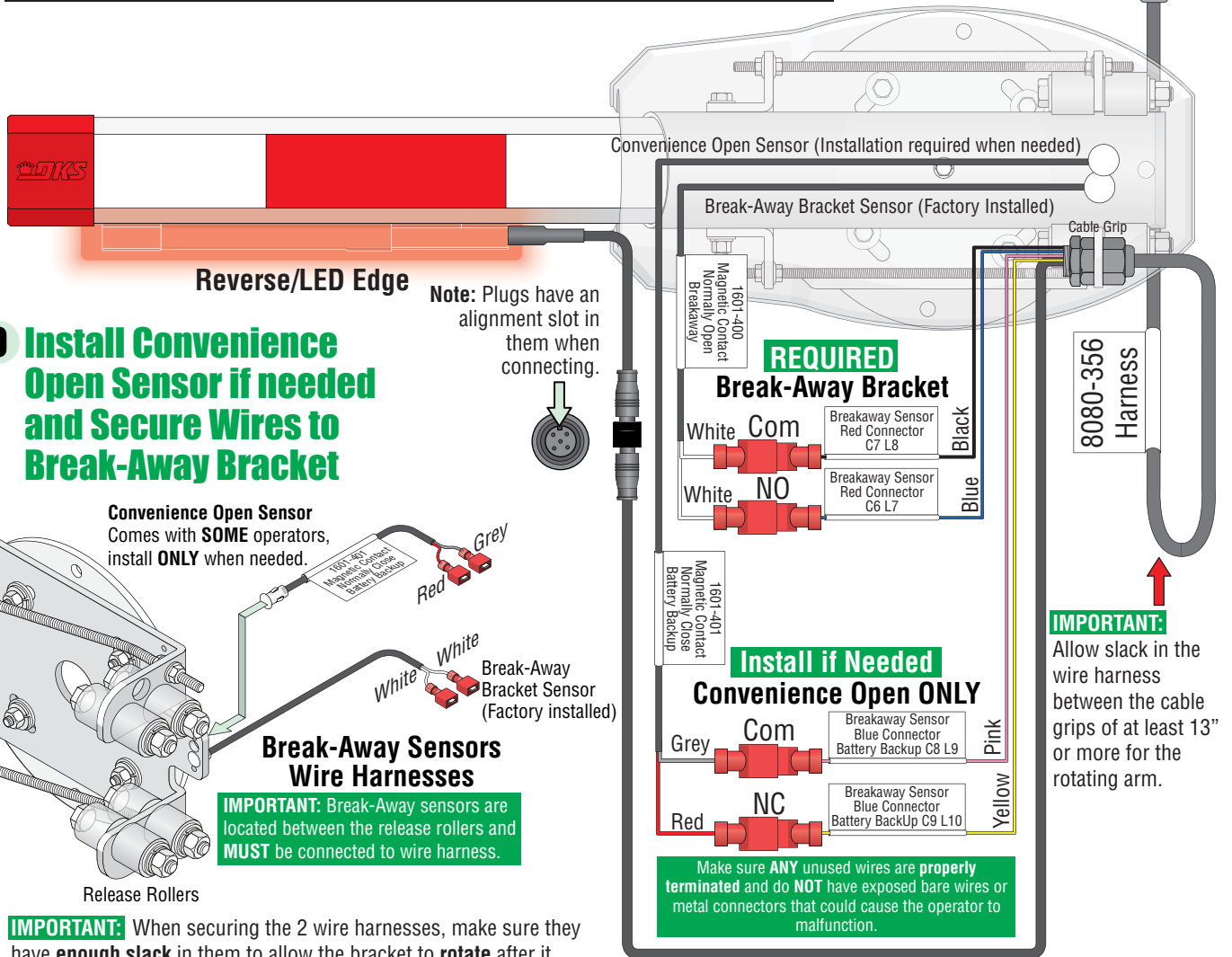
Note: The traffic light is wired together with the break-away arm in some installations when desired, so it's shown here for wiring reference. See Traffic Light 1603-264 PDF for more info when used.
Recommended
 6 Ft Cable / No Post P/N 1603-221
 6 Ft Cable / 35" Post P/N 1603-222
 11 Ft Cable / 95" Post P/N 1603-223



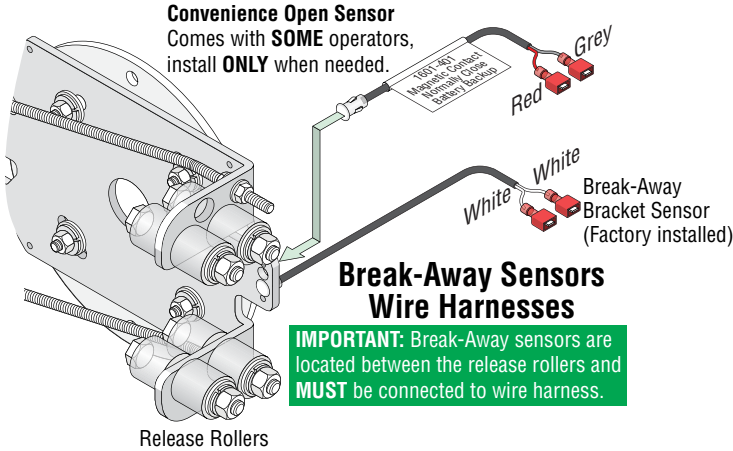
8 Connect Arm to Wire Harness

MAKE SURE ALL POWER IS TURNED OFF TO OPERATOR!

To Operator
See previous page

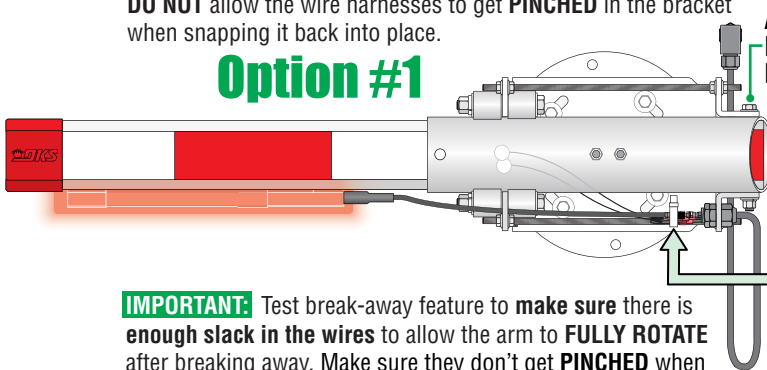


9 Install Convenience Open Sensor if needed and Secure Wires to Break-Away Bracket



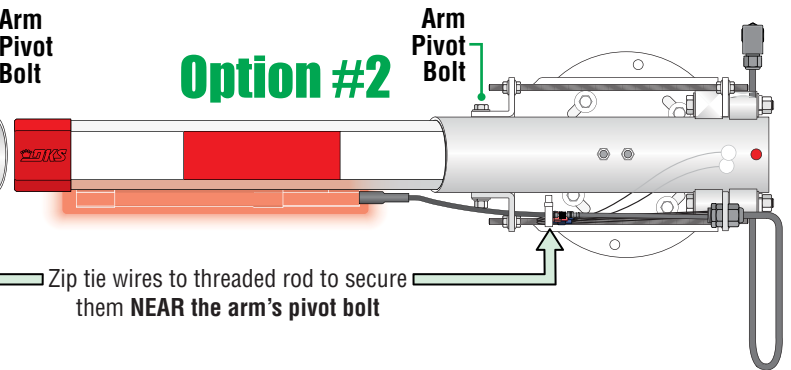
IMPORTANT: When securing the 2 wire harnesses, make sure they have **enough slack** in them to allow the bracket to **rotate** after it breaks away. Don't zip tie them so tightly to the bracket that they **PREVENT** the bracket from **FULLY rotating** when it breaks away. **DO NOT** allow the wire harnesses to get **PINCHED** in the bracket when snapping it back into place.

Option #1



IMPORTANT: Test break-away feature to **make sure** there is **enough slack in the wires** to allow the arm to **FULLY ROTATE** after breaking away. Make sure they don't get **PINCHED** when snapping the arm back in to place. Make sure the **plastic arm cover** fits over the wires and everything operates **smoothly**.

Option #2



10 Break-Away Arm Reset Procedure

If arm gets struck and breaks away, gate operator will automatically **SHUT DOWN** (Break-away sensors are tripped). Snap arm back into the release rollers. Make sure all wires are out of the way of the arm when snapping arm back in position. **NO Reset is necessary.** Normal operation can continue.

DO NOT OPERATE ARM WITHOUT BREAK-AWAY SENSORS FUNCTIONING.

14 Ft 2-Piece Octagon Arm Assembly

DoorKing Part Number

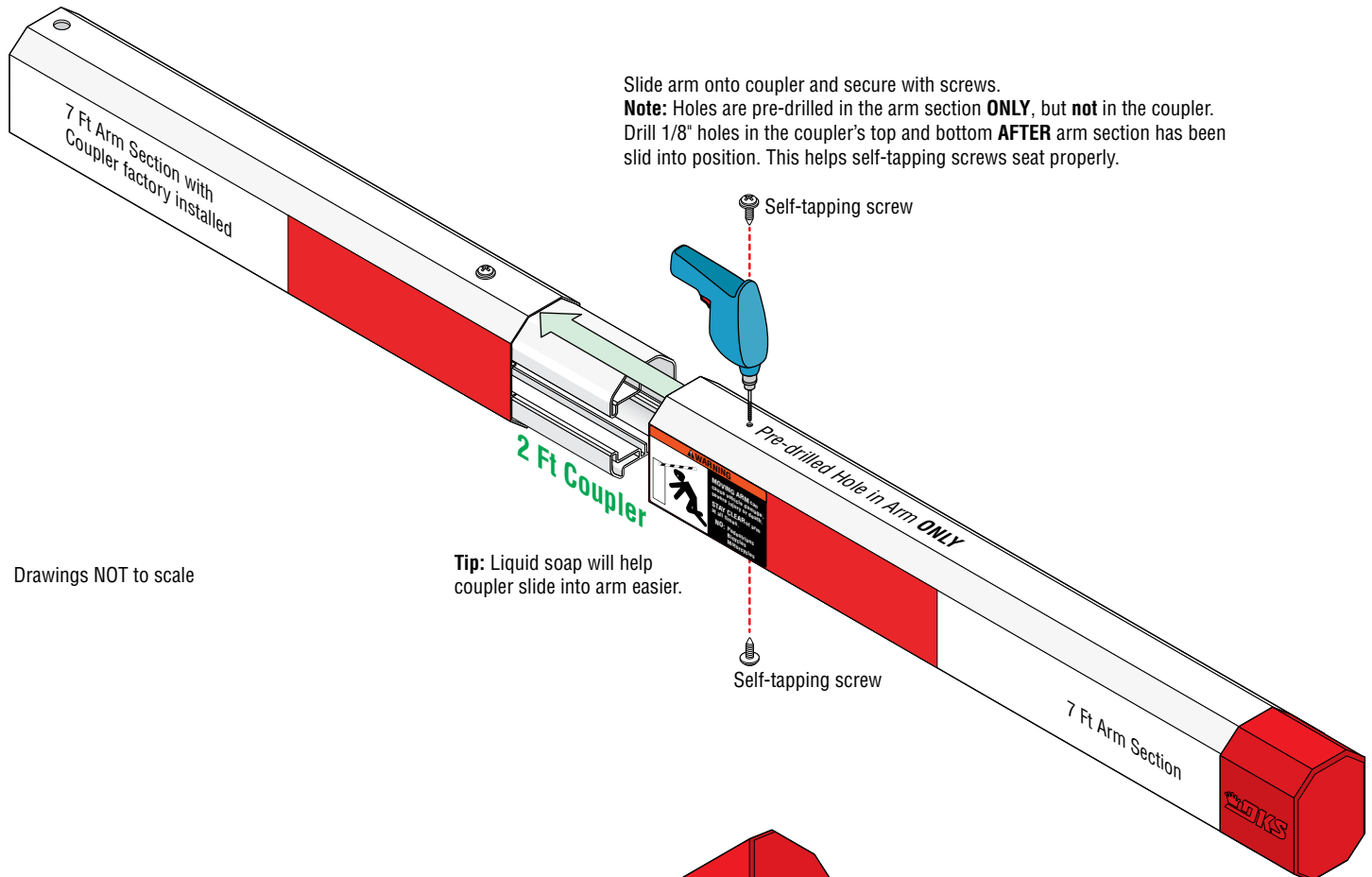
1601-567

14 Ft 2-Piece Octagon Arm Kit

This kit is designed for use on a 1601 barrier gate operator **ONLY**. It has TWO 7 ft arm sections that assemble into a 14 ft arm.

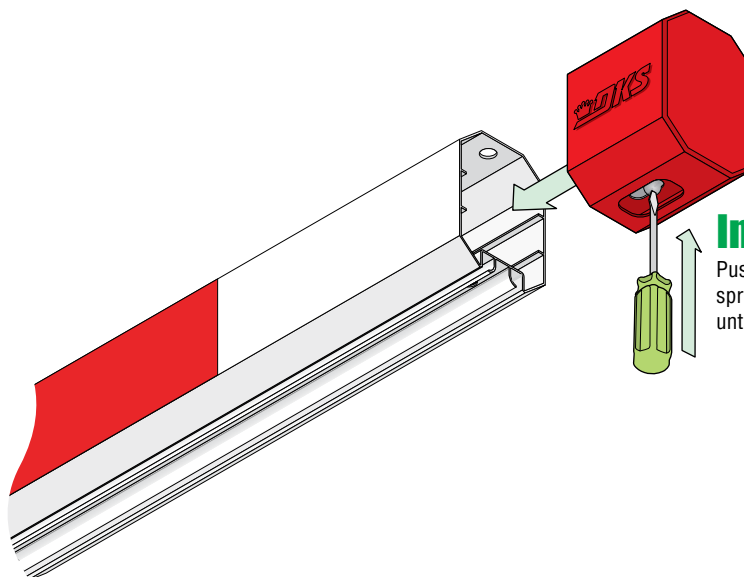
A reverse edge **SHOULD** be installed on this arm. It is sold separately but **highly recommended** for safety, see next page.

Assemble 2-Piece Arm



Drawings NOT to scale

Tip: Liquid soap will help coupler slide into arm easier.



If Shortening Arm see page 12

1601-269-X-4-26

Reverse Edge - Reverse/LED Edge Installation

These kits are designed to install on a **Break-Away** 14 ft 1-piece or 2-piece and a 17 ft **OCTAGON** arm (14 ft arm can be shortened if desired) on a 1601 or 1602 barrier gate operator. They **CANNOT** be used on a 1603 auto-spikes, 1620 lane barrier or 1625 wedge barrier operators.

Note: DO NOT operate arm with a malfunctioning reverse edge.

Reverse Edge

- (14 ft Arm cut to 7 ft) **5 ft Reverse edge** P/N 8080-605
- (14 ft Arm cut to 8 ft) **6 ft Reverse edge** P/N 8080-606
- (14 ft Arm cut to 11 ft) **9 ft Reverse edge** P/N 8080-609
- (14 ft Arm) **12 ft Reverse edge** P/N 8080-612

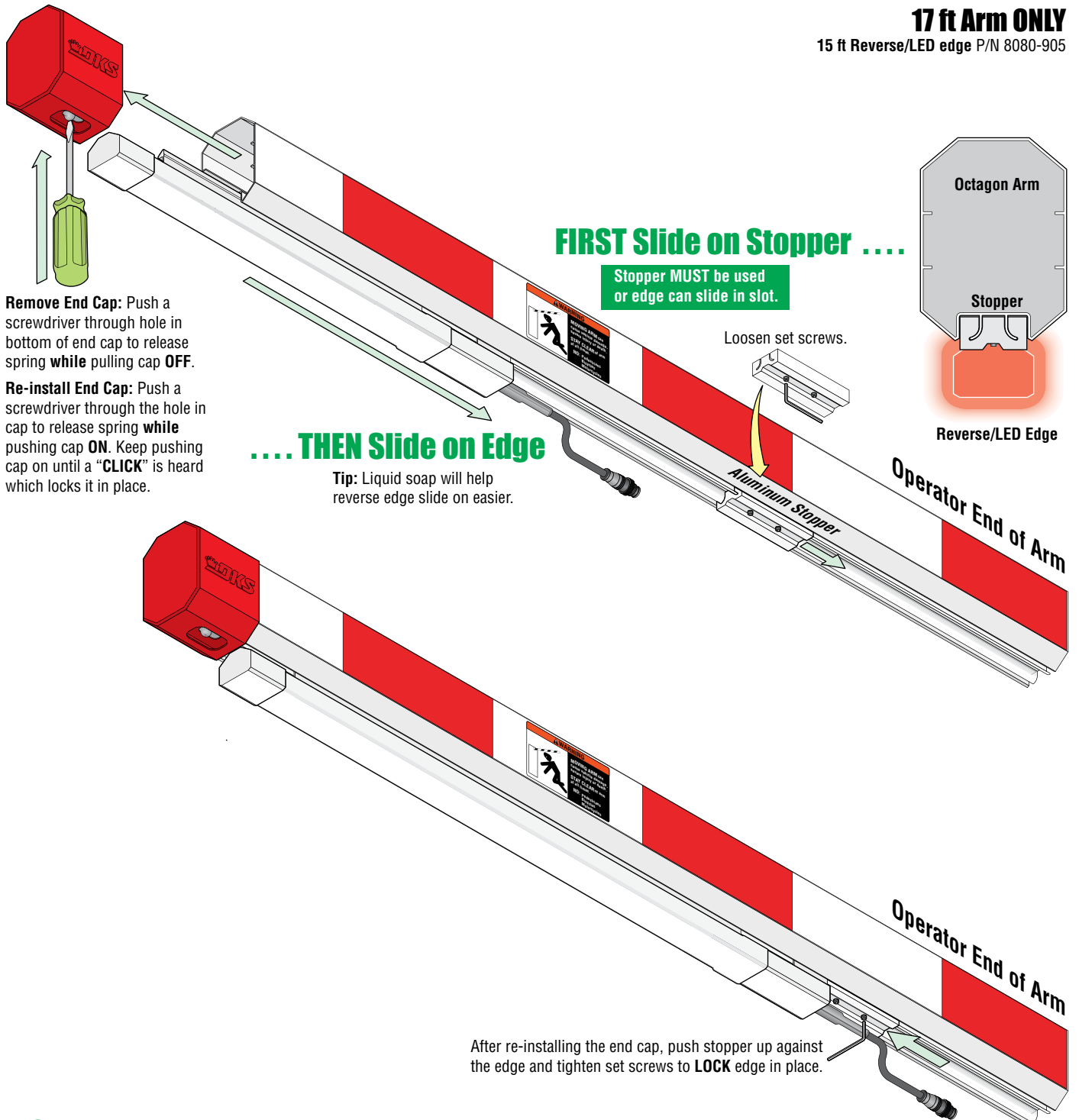
Reverse/LED Edge

- (14 ft Arm cut to 7 ft) **5 ft Reverse/LED edge** P/N 8080-905
- (14 ft Arm cut to 8 ft) **6 ft Reverse/LED edge** P/N 8080-906
- (14 ft Arm cut to 11 ft) **9 ft Reverse/LED edge** P/N 8080-909
- (14 ft Arm) **12 ft Reverse/LED edge** P/N 8080-912

17 ft Arm ONLY

- 15 ft Reverse/LED edge P/N 8080-905

Installation



Remove End Cap: Push a screwdriver through hole in bottom of end cap to release spring **while** pulling cap **OFF**.

Re-install End Cap: Push a screwdriver through the hole in cap to release spring **while** pushing cap **ON**. Keep pushing cap on until a "**CLICK**" is heard which locks it in place.

FIRST Slide on Stopper

Stopper MUST be used or edge can slide in slot.

Loosen set screws.

.... THEN Slide on Edge

Tip: Liquid soap will help reverse edge slide on easier.

Operator End of Arm

Operator End of Arm

After re-installing the end cap, push stopper up against the edge and tighten set screws to **LOCK** edge in place.

MALE Plug connects to the 8080-356 wire harness. see page 8.

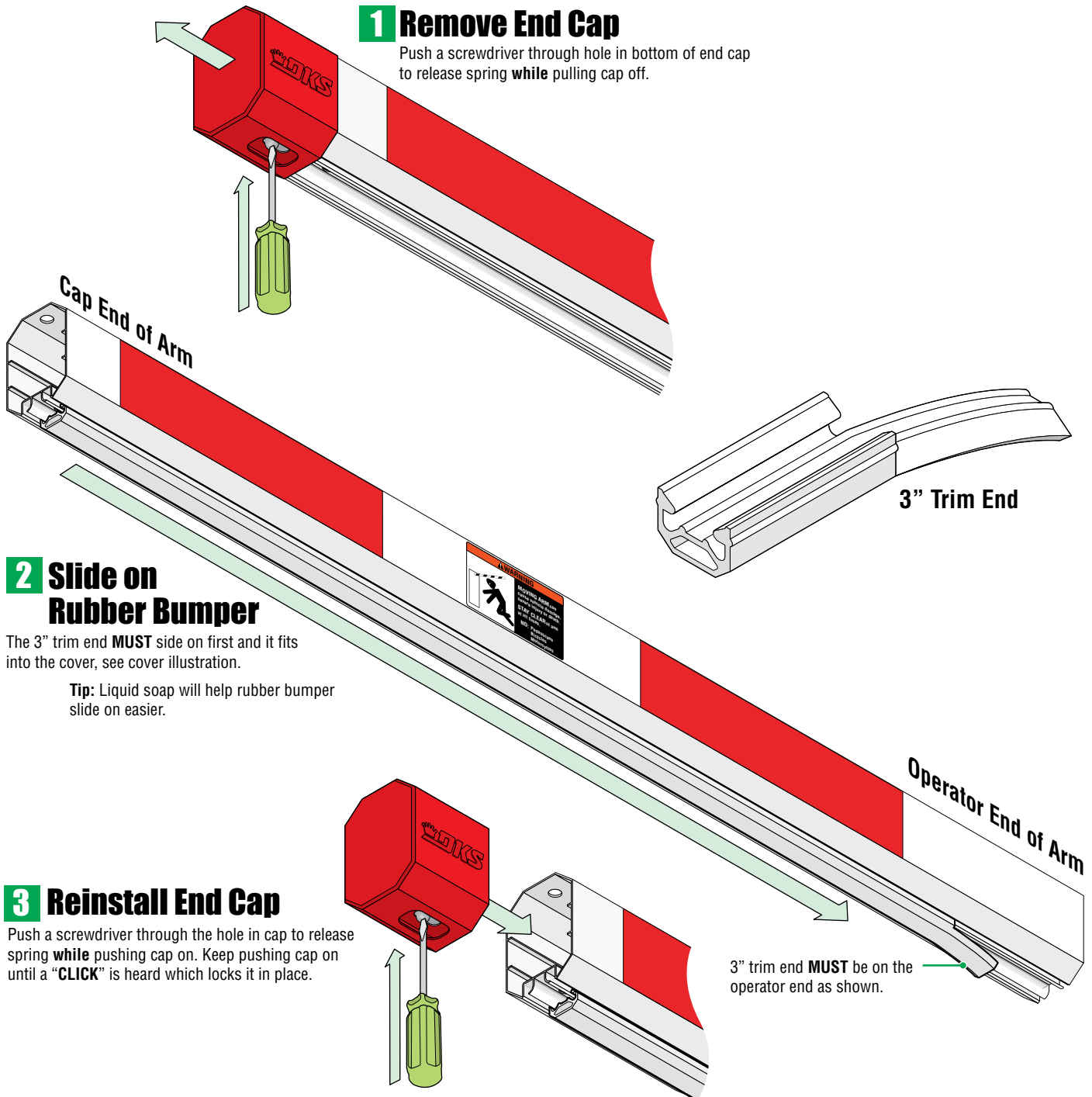
If Shortening a 14-ft Arm see page 12

14 Ft Rubber Bumper Installation

This rubber bumper is designed to install on a 14 ft 1-piece or 2-piece **octagon arm** (not included) for a 1601, 1603 auto-spikes, 1620 lane barrier or a 1625 wedge barrier gate operator. It **CANNOT** be used on a 1602 operator. it offers **MINIMAL** safety protection.

Installation

Drawings NOT to scale



1 Remove End Cap

Push a screwdriver through hole in bottom of end cap to release spring **while** pulling cap off.

2 Slide on Rubber Bumper

The 3" trim end **MUST** side on first and it fits into the cover, see cover illustration.

Tip: Liquid soap will help rubber bumper slide on easier.

3 Reinstall End Cap

Push a screwdriver through the hole in cap to release spring **while** pushing cap on. Keep pushing cap on until a "**CLICK**" is heard which locks it in place.

3" trim end **MUST** be on the operator end as shown.

If using a shortened arm rubber bumper can be cut to length

Reverse Edge

- (Arm cut to 7 ft) **5 ft Reverse edge** P/N 8080-605
- (Arm cut to 8 ft) **6 ft Reverse edge** P/N 8080-606
- (Arm cut to 11 ft) **9 ft Reverse edge** P/N 8080-609
- (14 ft Arm) **12 ft Reverse edge** P/N 8080-612

Reverse/LED Edge

- (Arm cut to 7 ft) **5 Reverse/LED edge** P/N 8080-905
- (Arm cut to 8 ft) **6 ft Reverse/LED edge** P/N 8080-906
- (Arm cut to 11 ft) **9 ft Reverse/LED edge** P/N 8080-909
- (14 ft Arm) **12 ft Reverse/LED edge** P/N 8080-912

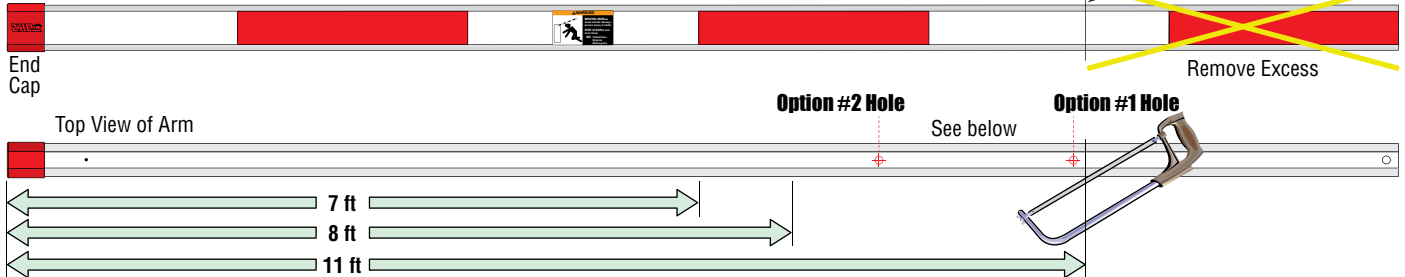
Shortening a 14-Ft Octagon Arm to 7-Ft, 8-Ft, 11-Ft

A 14 ft 1-piece **OR** 2-piece arm can be shortened to fit **different** length reverse edges. The shortened arm lengths are shown **depending on the length of the reverse edge chosen**. Follow the diagrams below depending on which style arm you have selected to shorten.

Note: Reverse edges **CANNOT** be cut down. They **MUST** remain intact.

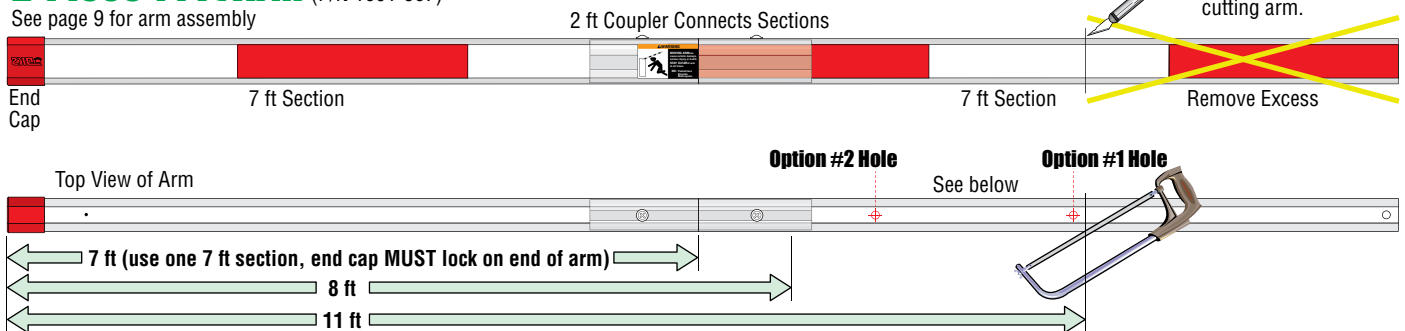
Drawings NOT to scale

1-Piece 14 Ft Arm (P/N 1601-555)



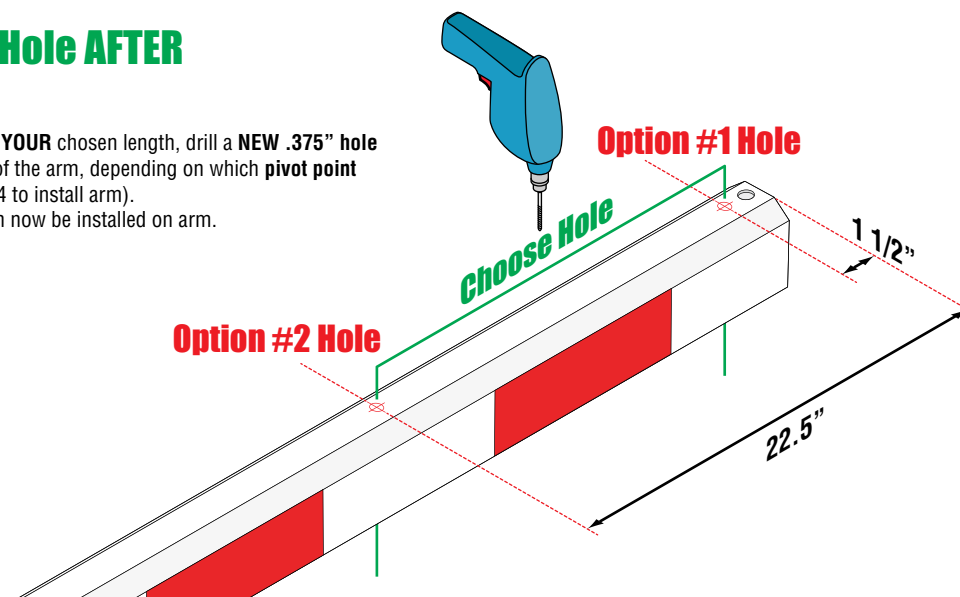
2-Piece 14 Ft Arm (P/N 1601-567)

See page 9 for arm assembly



Drill a .375" Pivot Hole AFTER Shortening Arm

AFTER cutting down arm to **YOUR** chosen length, drill a **NEW .375"** hole thru the **TOP** and **BOTTOM** of the arm, depending on which **pivot point** you have chosen (see page 4 to install arm). Reverse edge or bumper can now be installed on arm.



17 Ft Octagon Arm Assembly for a 1602 ONLY

DoorKing Part Numbers:

1602-303

Octagon Arm 3-ft Extension Kit

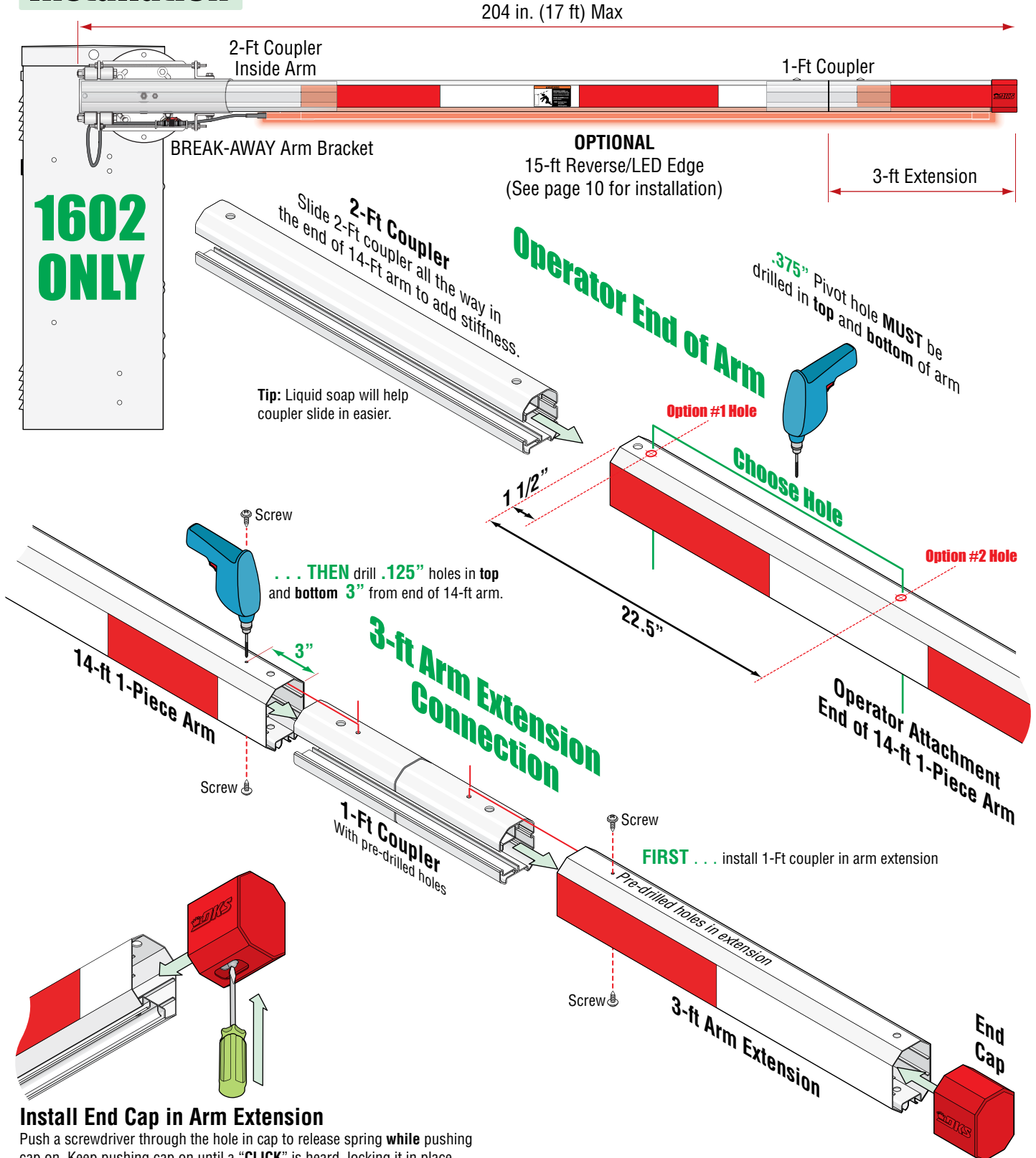
8080-915

15-ft Reverse/LED Edge
(Sold Separately)

See page 10)

This kit is designed for a **1602** barrier gate operator **ONLY**. It **CANNOT** be used on a 1601 **OR** 1603 auto-spikes. It will extend a 14 ft octagonal arm an **extra three feet**. The 15 ft reverse edge is sold separately but **HIGHLY recommended** for safety when lowering this **very long arm**.

Installation

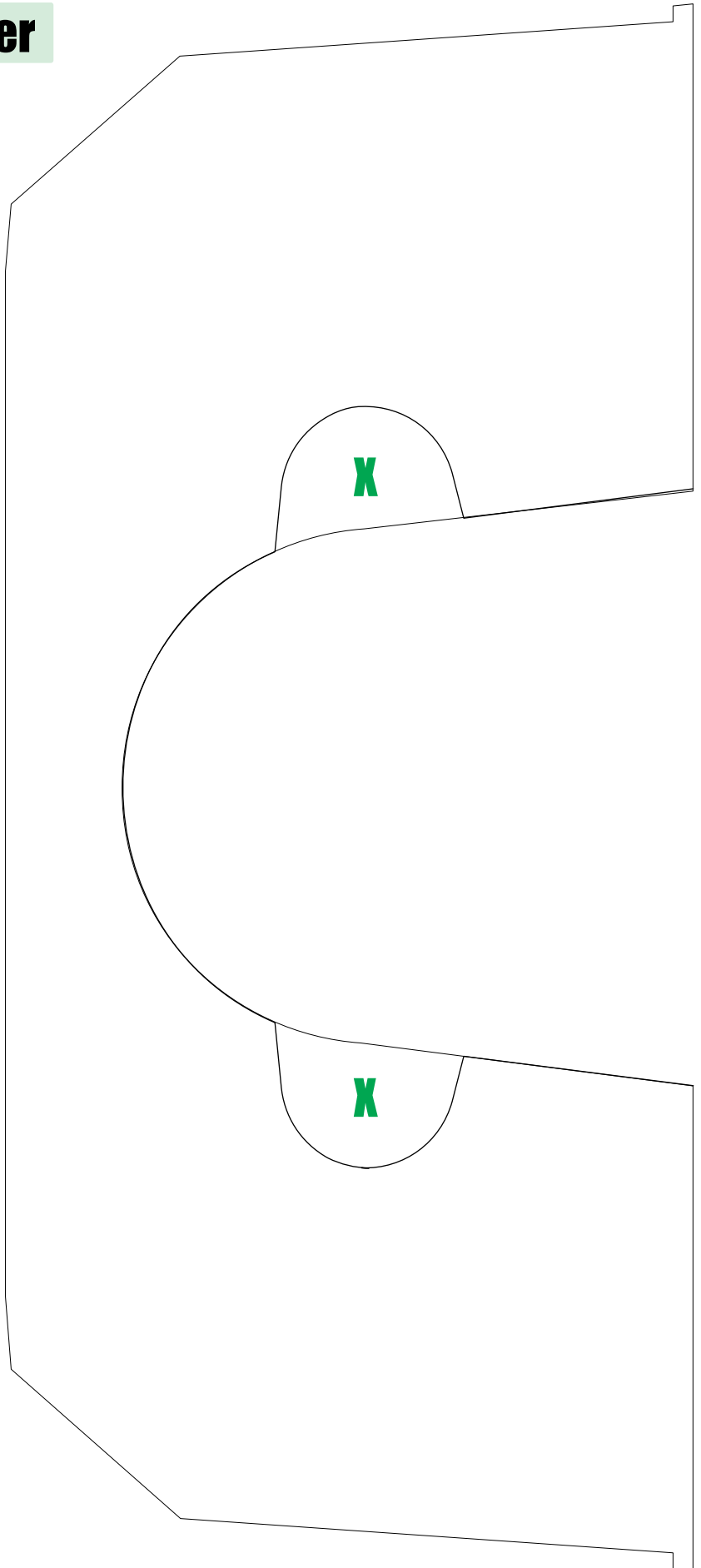
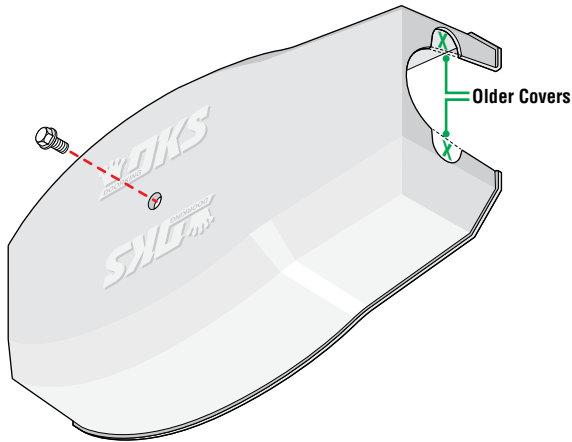


Install End Cap in Arm Extension

Push a screwdriver through the hole in cap to release spring **while** pushing cap on. Keep pushing cap on until a "**CLICK**" is heard, locking it in place.

Older Existing Arm Cover

Older existing plastic arm cover will need to have a notch cut out for a **OCTAGON** Arm's **Reverse Edge**. Only one side of the cover will need to be cut out depending on which side of the operator the arm is mounted on. Use this template as a guide to remove material from the cover.



Make sure your printer is set to 100% (Actual Size)
Drawing to scale