

WOOD FOLDING ARM KIT

DoorKing Part Number

1601-384

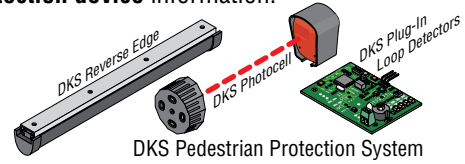
Two Arms and Hardware Kit

This kit is designed for the **1601 barrier gate operator ONLY**. It **CANNOT** be used on a 1602, 1603 auto-spikes, 1620 lane barrier or the 1625 wedge barrier. This arm is recommended for low headroom applications.

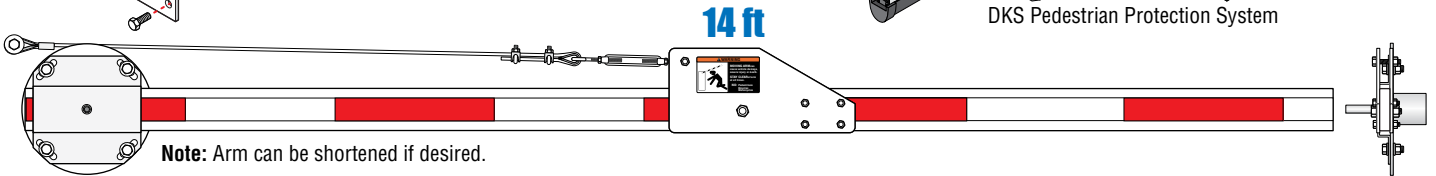
See 1601/1602 Installation/Owners manual (1601-065 PDF) for arm **safety protection device** information.

REVERSE Folding Arm Direction Kit

Reverses arm's horizontal direction from the factory setup.
P/N 1601-545 (sold separately)

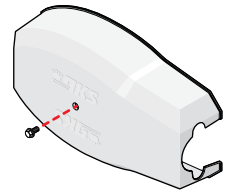


DKS Pedestrian Protection System



Wood Folding Arm Installation Steps:

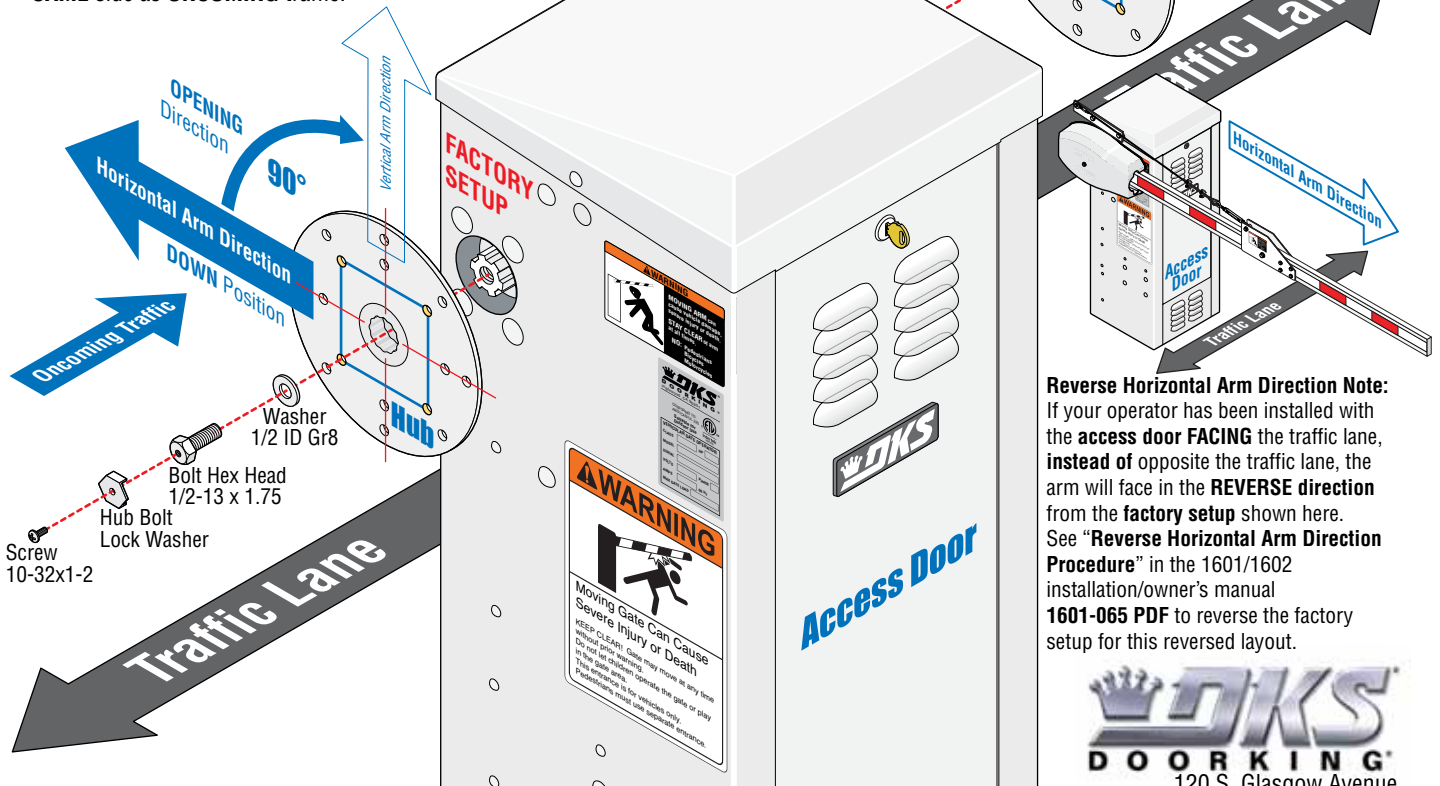
- | | | |
|---|--------------------------------------|---|
| 1 | Install Hub | 1 |
| 2 | 14 Ft Arm Layout or Shorten Arms | 2 |
| 3 | Installing Arms | 3 |
| 4 | Adjusting and Locking Cable Assembly | 3 |



Plastic arm cover with securing bolt included.

1 Install Hub

AFTER the barrier operator has been **PERMANENTLY INSTALLED** and has **POWER**, insert hub and secure it as shown to **YOUR DESIRED** side of the operator. A **SINGLE HUB** should be mounted on the **SAME** side as **ONCOMING** traffic.



Reverse Horizontal Arm Direction Note:

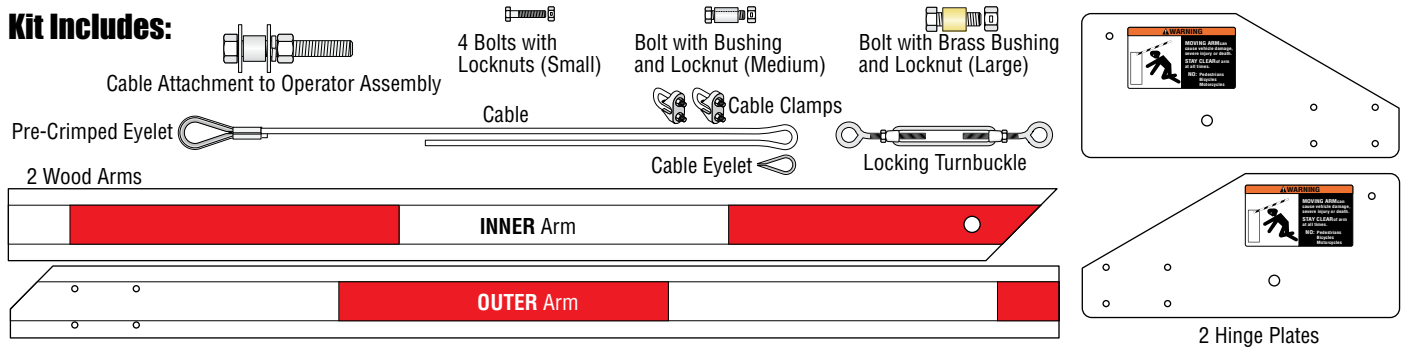
If your operator has been installed with the **access door FACING** the traffic lane, instead of opposite the traffic lane, the arm will face in the **REVERSE** direction from the **factory setup** shown here. See "**Reverse Horizontal Arm Direction Procedure**" in the 1601/1602 installation/owner's manual **1601-065 PDF** to reverse the factory setup for this reversed layout.



120 S. Glasgow Avenue
Inglewood, California 90301 U.S.A.

Copyright 2026 DoorKing®, Inc. All rights reserved.

Kit Includes:

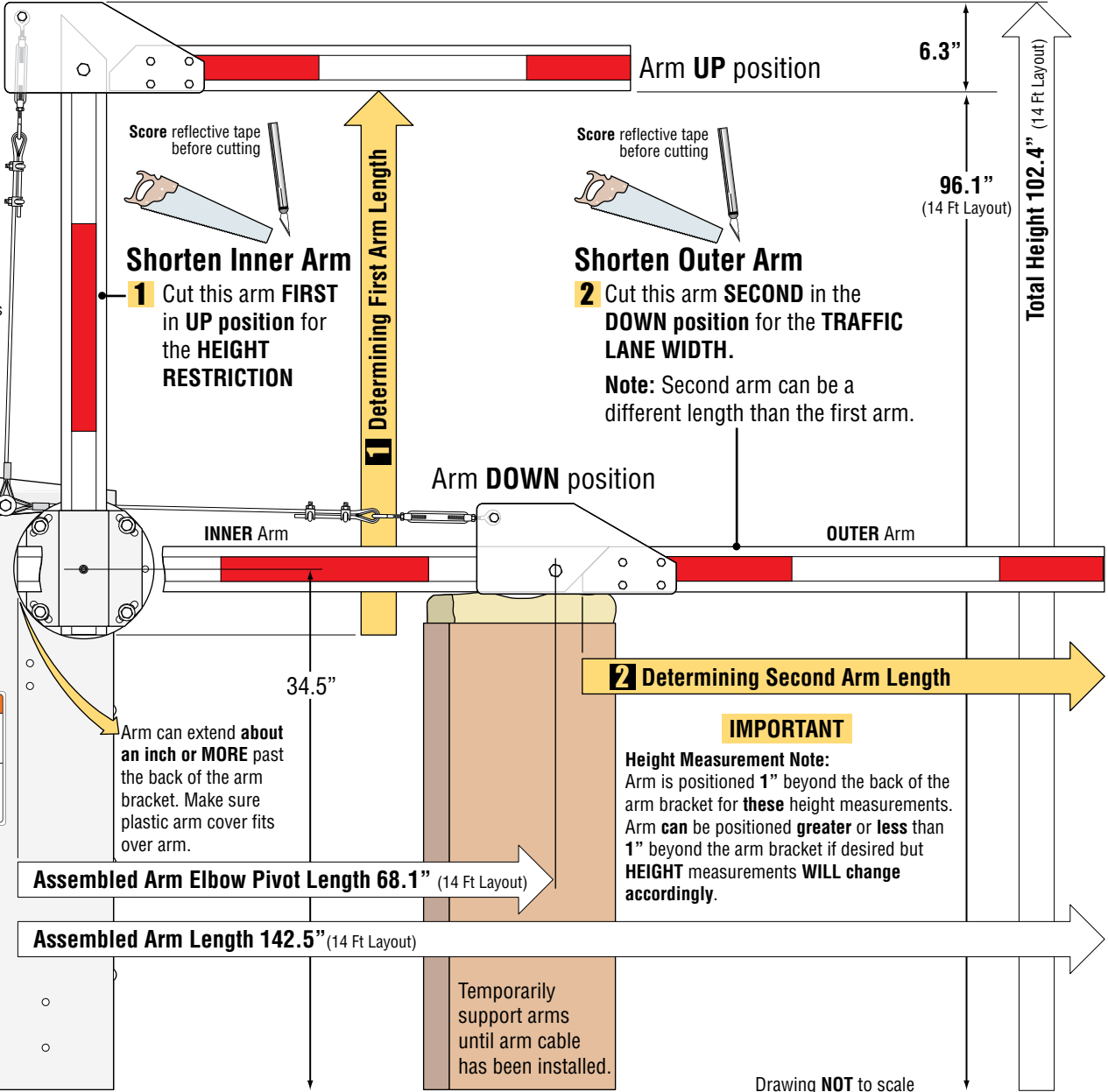
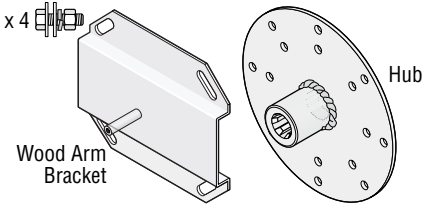
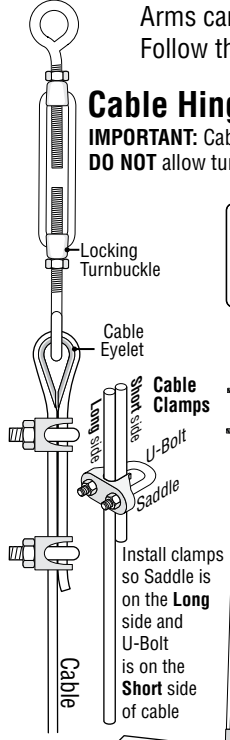


2 14 ft Arm Layout or Shorten Arms

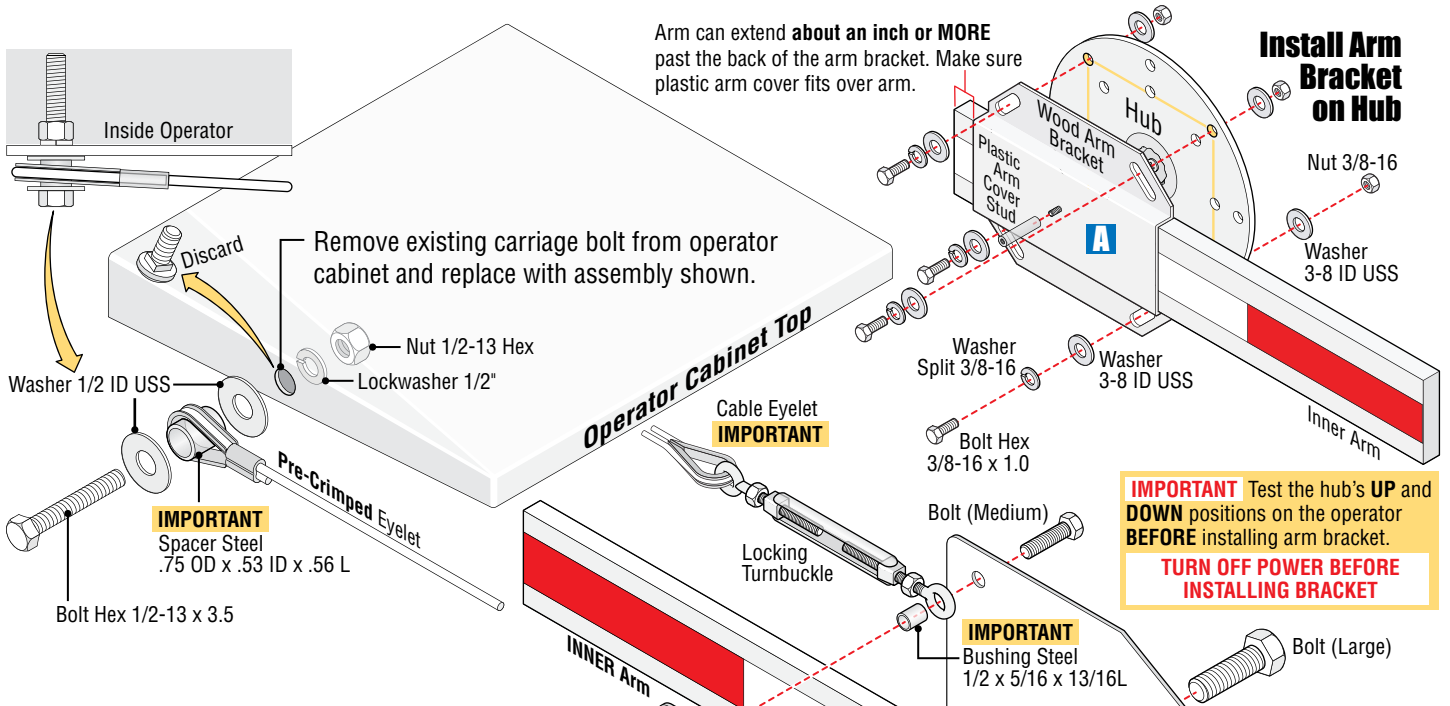
Arms can be **shortened** if desired. Typically because of **height restrictions**. Follow the procedure below.

Cable Hinge Plate Configuration

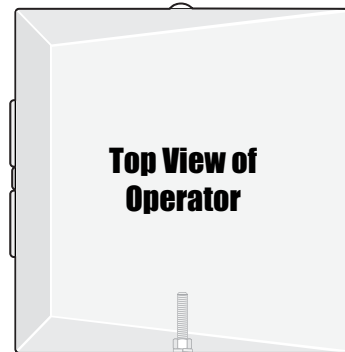
IMPORTANT: Cable **MUST** be assembled using **BOTH** cable clamps as shown. **DO NOT** allow turnbuckle to rub against hinge plates in **UP** position.



Drawing **NOT** to scale



3 Installing Arms



Tip: BEFORE the actual installation begins, layout **ALL** the components **on the ground separately** and walk-thru exactly **how** they will be assembled. This will help you understand what goes where-when and to make sure you have all the hardware needed for the assembly.

C Install cable, see previous page for cable hinge plate configuration.

Drawing **NOT** to scale

A Install **INNER** arm on hub

Cable Clamps

B Install hinge plates.

Cable Eyelet **MUST** be installed in turnbuckle

Allow turnbuckle to **loosen** or **tighten**, see below.

4 Adjusting and Locking Cable Assembly

AFTER adjusting cable tension, **LOCK** turnbuckle with nuts to **prevent** turnbuckle from **twisting** and **rubbing** against hinge plates when the arm is in the **UP** position.

