

PLASTIC FOLDING ARM KIT

DoorKing Part Number

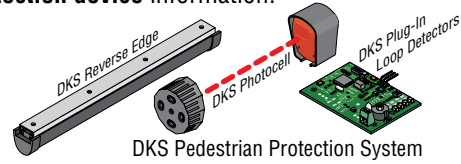
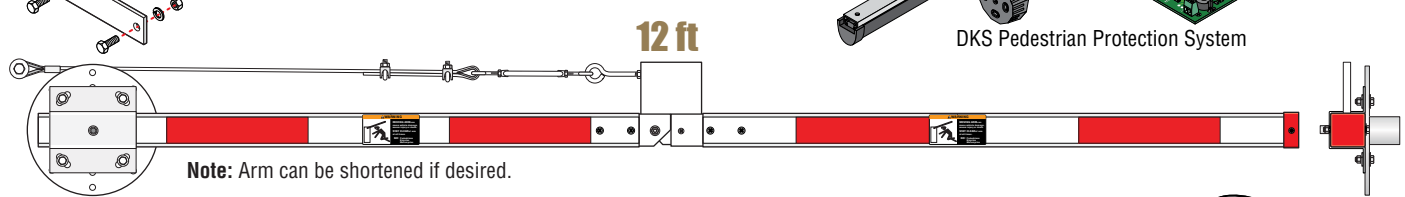
1601-383

Two Arms and Hardware Kit

This kit is designed for the **1601 barrier gate operator ONLY**. It **CANNOT** be used on a 1602, 1603 auto-spikes, 1620 lane barrier or the 1625 wedge barrier. This arm is recommended for low headroom applications.

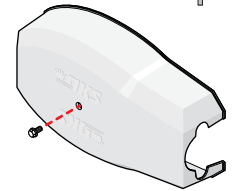
See 1601/1602 Installation/Owners manual (1601-065 PDF) for arm **safety protection device** information.

REVERSE Folding Arm Direction Kit
Reverses arm's horizontal direction from the factory setup.
P/N 1601-545 (sold separately)



Plastic Folding Arm Installation Steps:

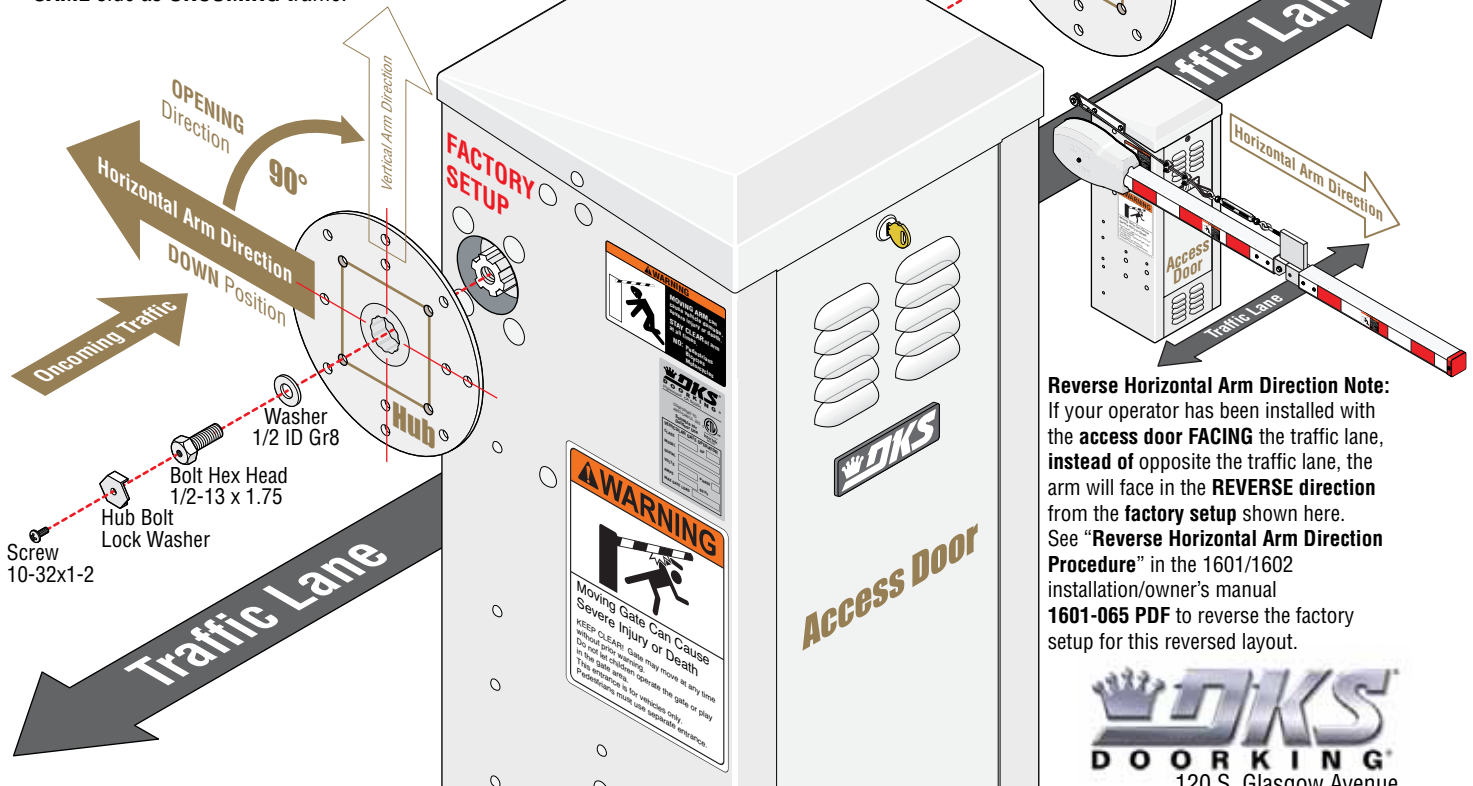
- 1 Install Hub 1
- 2 12 Ft Arm Layout or Shorten Arms 2
- 3 Installing Arms 3
- 4 Adjusting and Locking Cable Assembly 3



Plastic arm cover with securing bolt included.

1 Install Hub

AFTER the barrier operator has been **PERMANENTLY INSTALLED** and has **POWER**, insert hub and secure it as shown to **YOUR DESIRED** side of the operator. A **SINGLE HUB** should be mounted on the **SAME** side as **ONCOMING** traffic.



Reverse Horizontal Arm Direction Note:

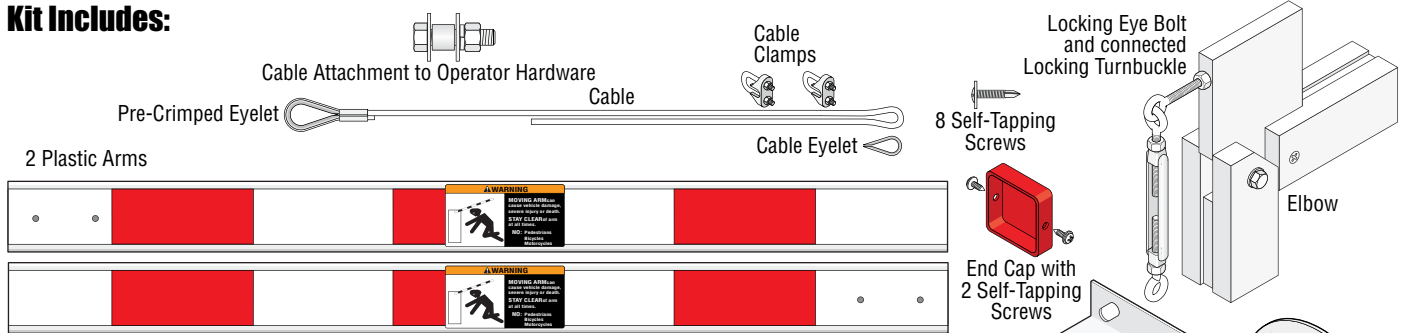
If your operator has been installed with the **access door FACING** the traffic lane, **instead of** opposite the traffic lane, the arm will face in the **REVERSE** direction from the **factory setup** shown here. See "**Reverse Horizontal Arm Direction Procedure**" in the 1601/1602 installation/owner's manual **1601-065 PDF** to reverse the factory setup for this reversed layout.



120 S. Glasgow Avenue
Inglewood, California 90301 U.S.A.

Copyright 2026 DoorKing®, Inc. All rights reserved.

Kit Includes:



2 12 ft Arm Layout or Shorten Arms

Arms can be **shortened** if desired. Typically because of **height restrictions**. Follow the procedure below.

Arm Bracket Attachment Hardware x 4

Cable Elbow Configuration

IMPORTANT: Cable **MUST** be assembled using **BOTH** cable clamps as shown.

