

# ROUND FOLDING ARM KIT

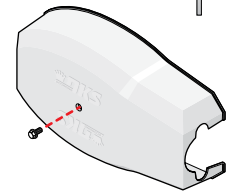
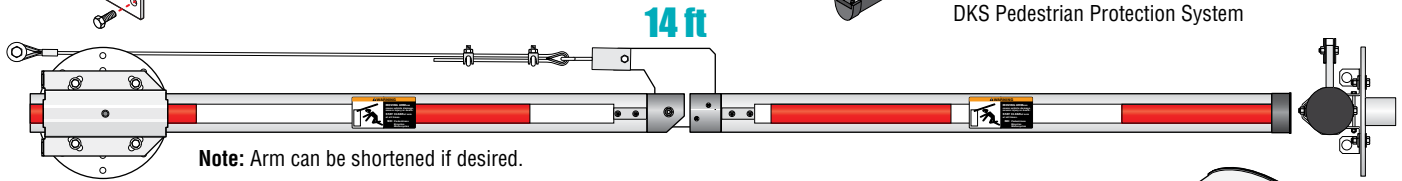
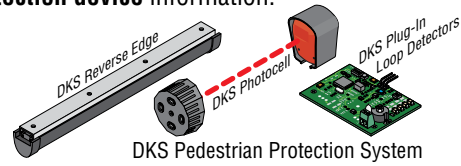
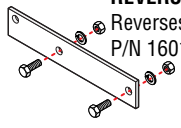
DoorKing Part Number

**1601-610**

Two Arms and Hardware Kit

This kit is designed for a **1601** barrier gate operator and a **1603 auto-spikes system**. It **CANNOT** be used on a 1602, 1620 lane barrier or the 1625 wedge barrier. This arm is recommended for low headroom applications. See 1601/1602 Installation/Owners manual (1601-065 PDF) for arm **safety protection device** information.

**REVERSE** Folding Arm Direction Kit  
Reverses arm's horizontal direction from the factory setup.  
P/N 1601-545 (sold separately)



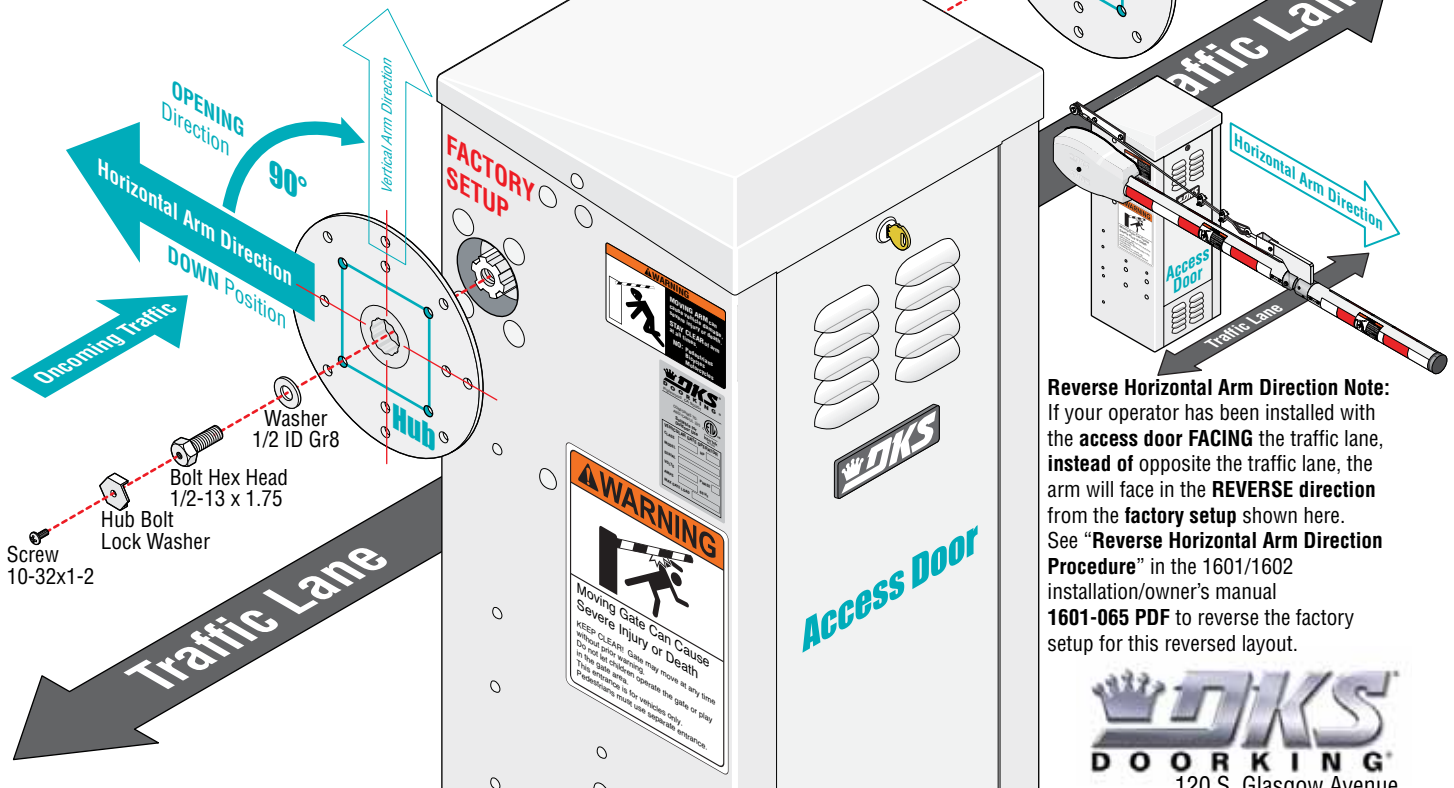
Plastic arm cover with securing bolt included.

## ROUND Folding Arm Installation Steps:

- |   |                                  |   |
|---|----------------------------------|---|
| 1 | Install Hub                      | 1 |
| 2 | 14 Ft Arm Layout or Shorten Arms | 2 |
| 3 | Installing Arms                  | 3 |
| 4 | Adjusting Support Cable          | 3 |

### 1 Install Hub

**AFTER** the barrier operator has been **PERMANENTLY INSTALLED** and has **POWER**, insert hub and secure it as shown to **YOUR DESIRED** side of the operator. A **SINGLE HUB** should be mounted on the **SAME** side as **ONCOMING** traffic.



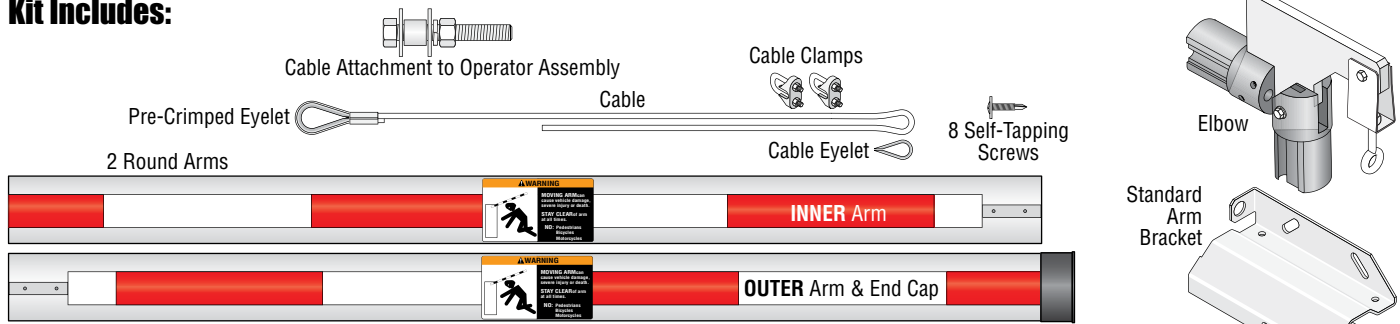
**Reverse Horizontal Arm Direction Note:**  
If your operator has been installed with the **access door FACING** the traffic lane, **instead of** opposite the traffic lane, the arm will face in the **REVERSE** direction from the **factory setup** shown here. See **"Reverse Horizontal Arm Direction Procedure"** in the 1601/1602 installation/owner's manual **1601-065 PDF** to reverse the factory setup for this reversed layout.



120 S. Glasgow Avenue  
Inglewood, California 90301 U.S.A.

Copyright 2026 DoorKing®, Inc. All rights reserved.

**Kit Includes:**

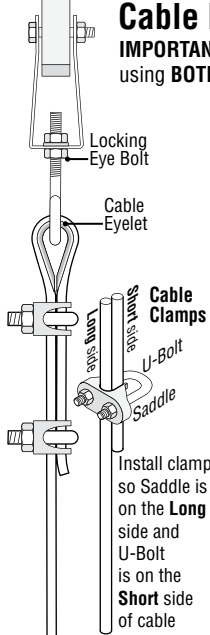


**2 14 ft Arm Layout or Shorten Arms**

Arms can be **shortened** if desired. Typically because of **height restrictions**. Follow the procedure below.

**Cable Elbow Configuration**

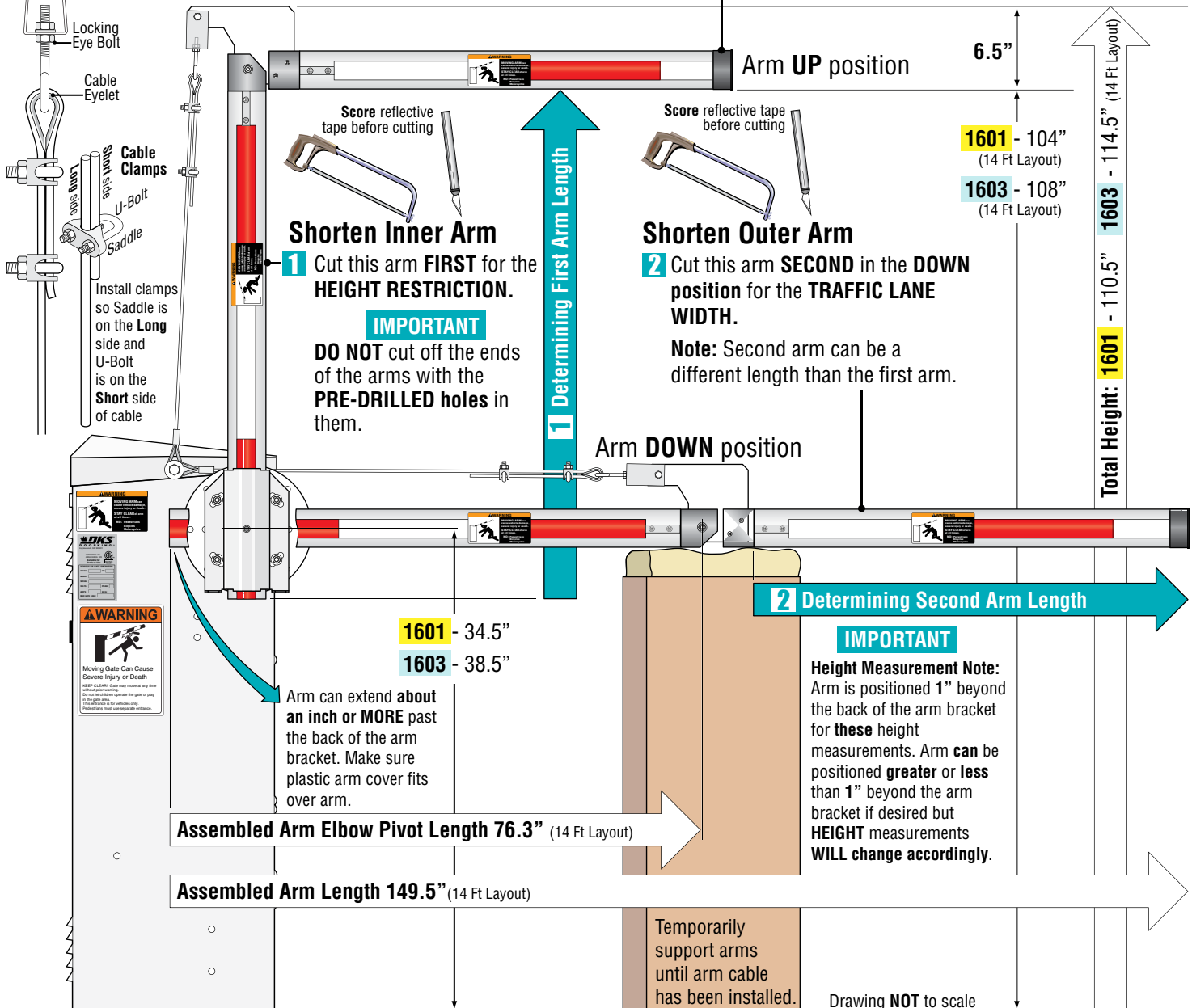
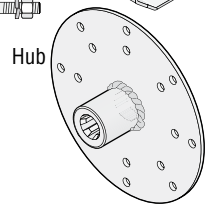
**IMPORTANT:** Cable **MUST** be assembled using **BOTH** cable clamps as shown.

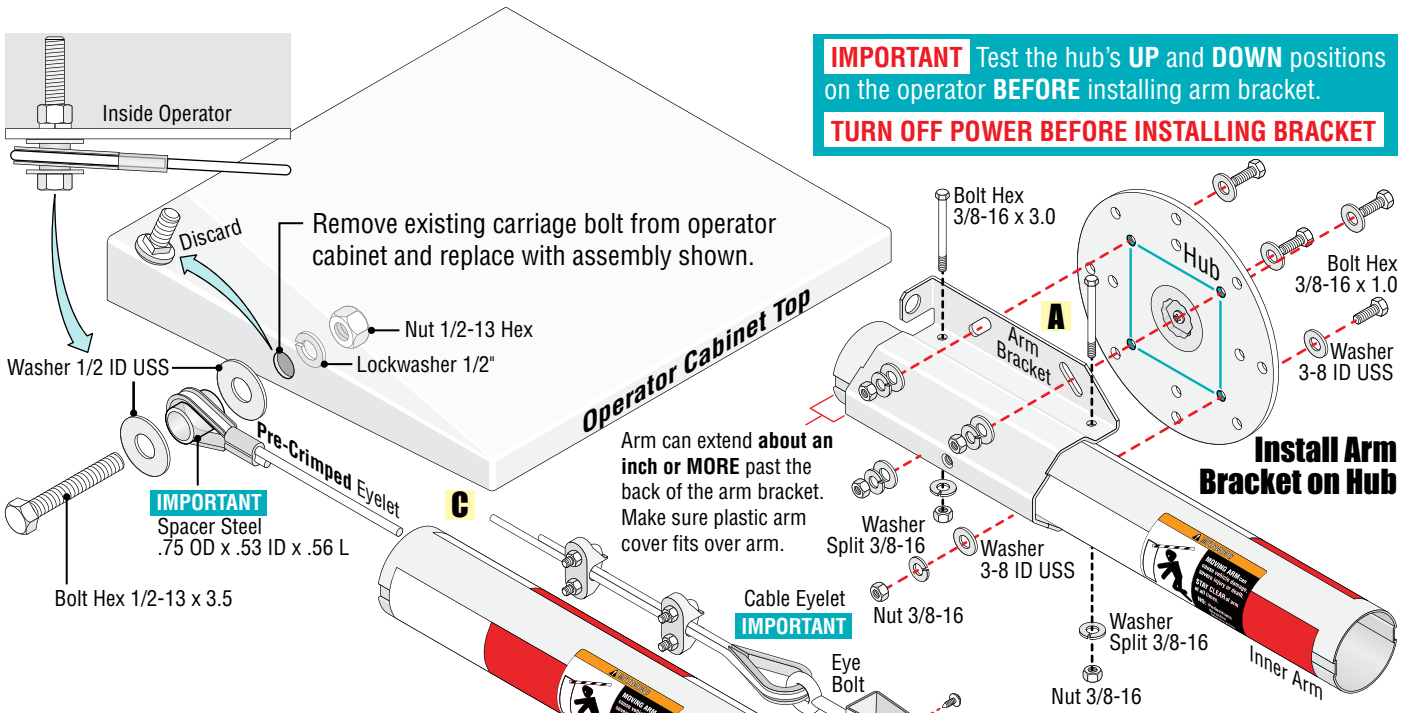


Install clamps so Saddle is on the **Long** side and U-Bolt is on the **Short** side of cable

Plastic end cap **PULLS** off

Arm Bracket Attachment Hardware x 4  
Arm Bracket Attachment Hardware x 2

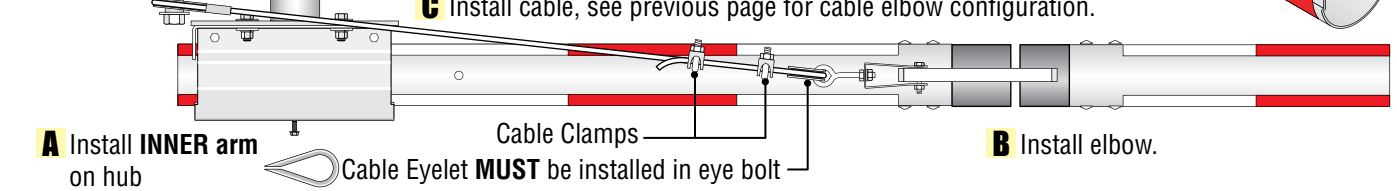




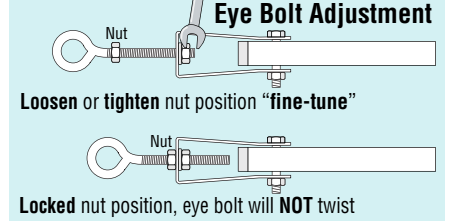
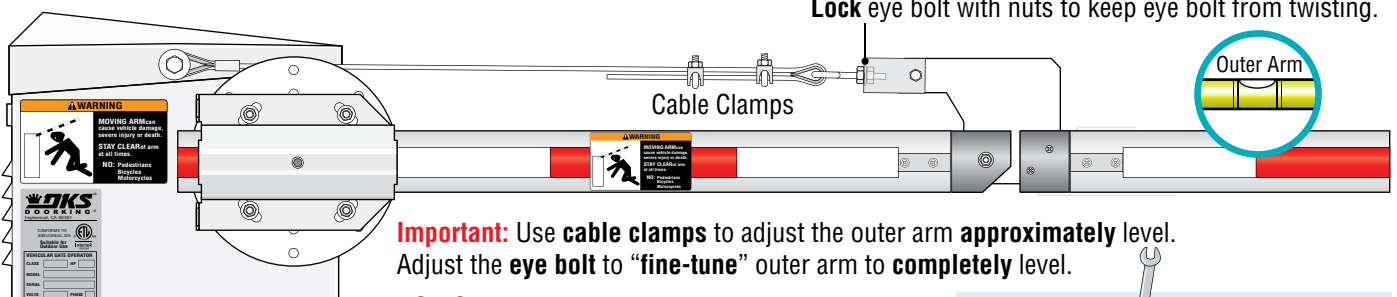
### 3 Installing Arms



**Tip:** BEFORE the actual installation begins, layout ALL the components on the ground separately and walk-thru exactly how they will be assembled. This will help you understand what goes where-when and to make sure you have all the hardware needed for the assembly.



### 4 Adjusting Support Cable



Rotate arm up and down a few times. Re-adjust cable tension with eye bolt to re-level OUTER arm if necessary. Make sure that cable assembly is not binding or twisting and everything moves freely while cycling.