



Access Control *Solutions*

## **DoorKing IM Server™**



### **What exactly is the IM Server™?**

Connection alternatives for programming your DoorKing Telephone Entry and Access Control systems

DoorKing, Inc.®  
info@doorking.com  
www.doorking.com

# Telephone Entry / Access Control



- DoorKing 1830 Series Telephone Entry Systems and Access Controllers are PC Programmable
- There is no charge to program your Entry Systems
- Software is Free



- The important question is – *how will you transfer the Programming and Database from your computer to the system that is installed in the field?*



# Telephone Entry / Access Control

- **Most brands of Entry Systems offer only 1 or 2 methods of connection.**
- **DoorKing offers 7 different methods of connection.**
  - ✓ Modem to Modem (free)
  - ✓ RS-232 Direct Connection (free)
  - ✓ RS-422 – USB connection (free)
  - ✓ Wireless Connection (free)
  - ✓ TCP/IP LAN (free)
  - ✓ TCP/IP WAN or Internet (free)
  - ✓ DK Internet Modem Server (nominal monthly subscription)
- **Are these methods really “Free”? Each connection method has some cost factors to consider.**

# 7 Methods of Connectivity



## PC Programmable Connection Options

Connection Method	DKS	Notes
<b>Modem to Modem</b>		Uses Phone Line at Entry System for Voice and Modem connection. Requires Phone at programming PC. Requires Modem at Programming PC. May incur service labor for Modem Set Up.
<b>RS-232</b>		Wire run limited to 100 feet. Requires running cable out to Entry System. Local connection, no programming available from off site location.
<b>RS-422</b>		Wire runs up to 4,000 feet. Requires RS-422 adapters. Requires running cable out to Entry System. Local connection, no programming available from off site location.
<b>Wireless</b>		Up to 1,000+ foot range, line-of-sight. Requires wireless adapters and external antennas for best performance. Service costs to add Additional Power supply at entry system. Local connection, no programming available from off site location.
<b>LAN</b>		Requires TCP/IP adapter. Cat-5 cable limited to 325 feet, and cost of running cable to Entry System. Service costs to add power supply at entry system. Local connection, no programming available from off site location.
<b>WAN / Internet</b>		Requires TCP/IP adapter and DDNS service. Cat-5 cable limited to 325 feet. Costs of running cable to Entry System. Internet Connection (DSL) service must be provided to Entry System. Possible Static IP or DDNS Host costs.
<b>DK Internet-Modem Server</b>		No extra hardware or wire runs to make. Just use the existing Phone line already installed at the system and your existing PC internet connection.

**No Fees**

**No Fees**

**No Fees**

**No Fees**

**No Fees**

**No Fees**

**No Fees**

**Subscription Plan**

# DoorKing Has A Better Way!

DKS

## DKS Internet Modem Server™



Program  
Online  
24/7



# Advantage - DoorKing®

## DKS Internet Modem Server™

- **The DoorKing IM Server is a subscription based website that will simplify programming connections between your PC and your Entry Systems**
- **Subscribing to the IM Server site combines the best of both worlds:**
  - ✓ An Internet connection at the PC is the easiest and most cost effect method for data transfer at the PC.
  - ✓ A Modem connection at the Entry System is the easiest and most cost effect method for data transfer at the Entry System.
- **The DoorKing IM Server links your computers Internet connection to the Modem inside the entry system**
- **This offers a simple, reliable and easy to use method to Send and Receive data from your systems**



# Advantage - DoorKing®

## DKS Internet Modem Server™

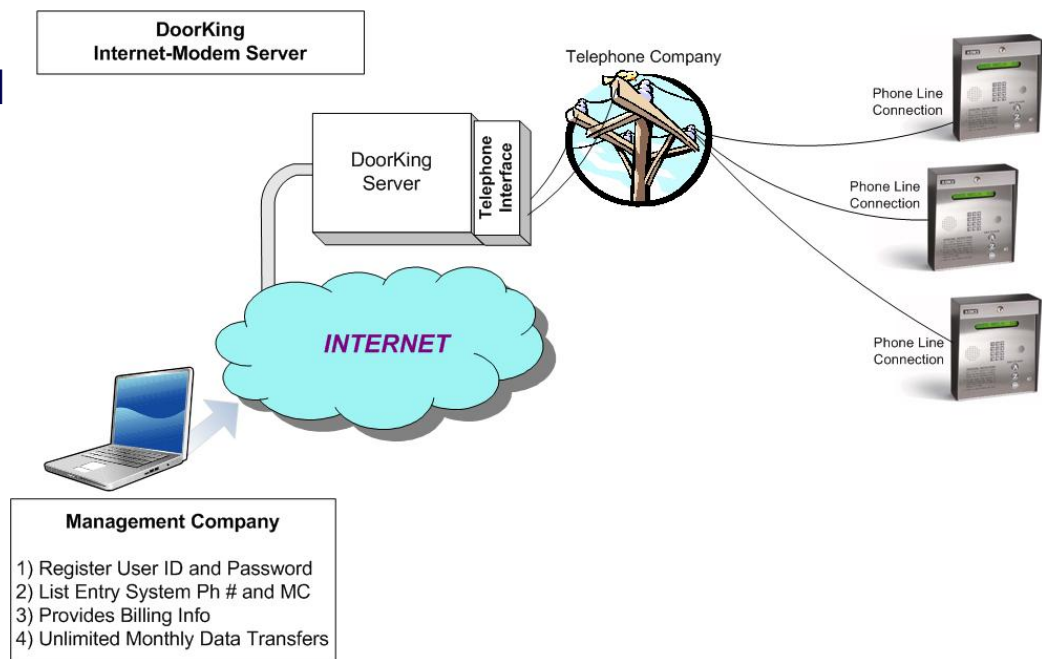
- ✓ No Modem Needed at the PC
- ✓ No Modem Software
- ✓ No Modem Setup Strings
- ✓ No Distance Limitations
- ✓ No Trenching to Run Wires
- ✓ No New Hardware to Install
- ✓ No Site Visit Required
- ✓ No hardware power requirements
- ✓ No Internet connection needed at Entry System
- ✓ Connect to Unlimited Systems



# Advantage - DoorKing®

## DKS Internet Modem Server™

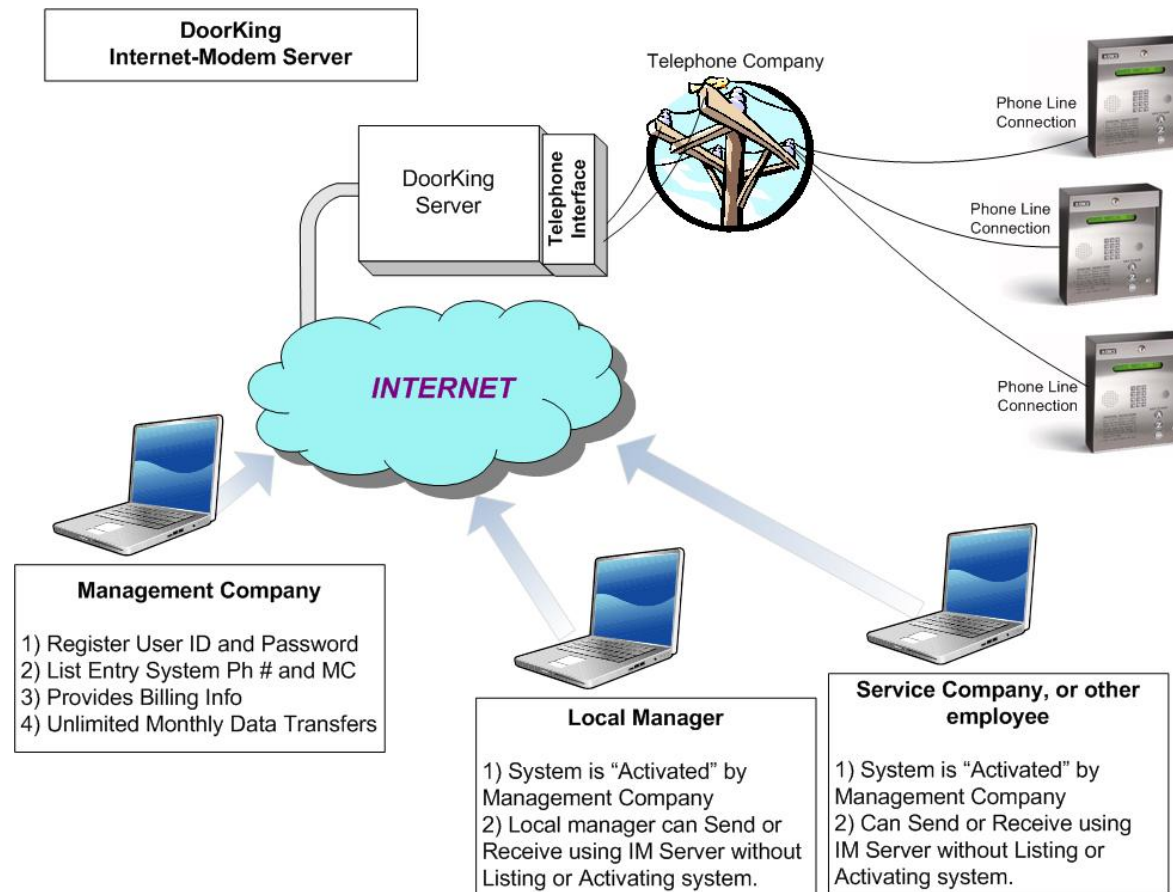
1. PC sends the Database to the DK IM Server
2. The IM Server converts the database to a Modem package.
3. The IM Server dials the entry system and sends the database via modem to the Entry System.
4. PC can send data to multiple systems in one programming step.





# Advantage - DoorKing®

- Each system only needs to be activated one time, by one person. Once activated, other staff members or offices can connect through the IM Server



# Data Transfer Options



- **Lets consider the options available for connecting to the Entry System Controller**



# 7 Methods of Connectivity



## PC Programmable Connection Options

Connection Method	DKS	Notes
<b>Modem to Modem</b>		Uses Phone Line at Entry System for Voice and Modem connection. Requires Phone at programming PC. Requires Modem at Programming PC. May incur service labor for Modem Set Up.
<b>RS-232</b>		Wire run limited to 100 feet. Requires running cable out to Entry System. Local connection, no programming available from off site location.
<b>RS-422</b>		Wire runs up to 4,000 feet. Requires RS-422 adapters. Requires running cable out to Entry System. Local connection, no programming available from off site location.
<b>Wireless</b>		Up to 1,000+ foot range, line-of-sight. Requires wireless adapters and external antennas for best performance. Service costs to add Additional Power supply at entry system. Local connection, no programming available from off site location.
<b>LAN</b>		Requires TCP/IP adapter. Cat-5 cable limited to 325 feet, and cost of running cable to Entry System. Service costs to add power supply at entry system. Local connection, no programming available from off site location.
<b>WAN / Internet</b>		Requires TCP/IP adapter and DDNS service. Cat-5 cable limited to 325 feet. Costs of running cable to Entry System. Internet Connection (DSL) service must be provided to Entry System. Possible Static IP or DDNS Host costs.
<b>DK Internet-Modem Server</b>		No extra hardware or wire runs to make. Just use the existing Phone line already installed at the system and your existing PC internet connection.

**No Fees**

**No Fees**

**No Fees**

**No Fees**

**No Fees**

**No Fees**

**No Fees**

**Subscription Plan**

## FAQ's on the DK IM Server...

- **Is DoorKing charging to program their systems? Should I change to another connection method that offers free programming?**
  - Remember, programming and software are free. The real issue is ***how will you connect to the system in the field*** when you are transferring the information?
  - The IM Server, in some instances, may be the most cost effective method of connecting to the system.
  - As mentioned, DoorKing offers 7 different methods of connection. But are these really “Free”?

# FAQ's on the DK IM Server...

- **What are the advantages of using the IM Server?**
  - The DK IM Server may be the *least expensive* method of connecting.
  - No additional hardware required at entry system or PC (which means no service call). Just use your existing PC internet connection.
  - No additional wiring needed (no trenching).
  - No distance limitations.
  - Program multiple systems simultaneously (impossible with a modem).
  - Backwards compatible. Works with DKS systems that are 10+ years old with no modifications required.

## FAQ's on the DK IM Server...

- **Why don't other brands of Telephone Entry Systems charge for this service?**
  - The IM Server is a unique program that is only available from DoorKing, for use with DoorKing Telephone Entry & Access Control systems.
  - Other brand Entry Systems require Modem to Modem or direct wired connection for programming.
  - DoorKing systems can also use a Modem to Modem or direct wired connection. However, the IM Server offers a much more simple connection alternative.
  - The IM Server has been proven to be more reliable than Modem to Modem connections and may be the most cost effective method of connecting to your entry systems.

# FAQ's on the DK IM Server...




## What is the next step I need to take?

- ✓ Consider how you would like to send data from your Computer to your Entry Systems.
- ✓ Visit [www.doorking.com/IMserver](http://www.doorking.com/IMserver) View the presentations available on the DoorKing IM Server Program.
- ✓ If you think the server program is for you, then you will need to register on the Server Website:  
<http://dksdb.dksoftware.com/UserLogin.aspx>
- ✓ You will need to list each entry system you want to register, then set up the billing page for your subscription.
- ✓ Contact your DoorKing Dealer for more details on the IM Server program.

# Making Your Life Easier!

## Questions?

- [www.doorking.com/IMserver](http://www.doorking.com/IMserver)
- Free software download
- FAQ's & Subscription Pricing plans
- How to Register video
- "7 Methods of Connectivity" presentation
- [www.facebook.com/doorking](http://www.facebook.com/doorking) 
- IM Server website:  
<http://dksdb.dksoftware.com/UserLogin.aspx>

