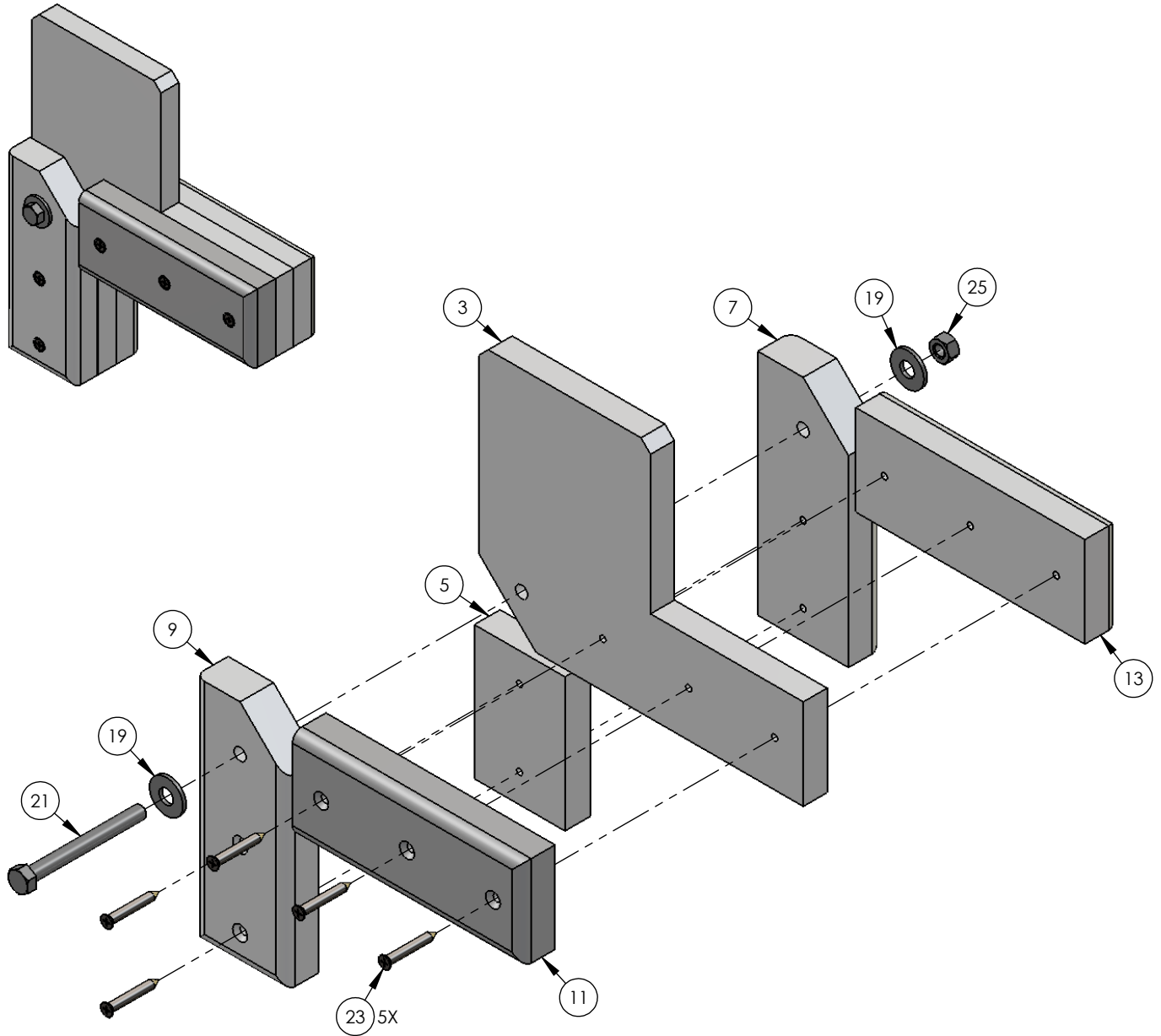


REVISIONS

REV	DESCRIPTION	DATE	APPR
C	Revised & Redrawn on SolidWorks.	Sal 11/12/08	D.C. 11/12/08



Item	Part Number	Qty	UM	Description
1	1601-849	1	EA	IPB-Model 1601-049 Plastic Elbow Assy
3	1601-136	1	EA	Hinge Pivot UHMW
5	1601-135	1	EA	Hinge Plate Center UHMW
7	1601-131	1	EA	Hinge Plate Left UHMW
9	1601-130	1	EA	Hinge Plate Right UHMW
11	1601-132	1	EA	Plate Right UHMW
13	1601-133	1	EA	Plate Left UHMW
19	2620-028	2	EA	Washer 5/16" USS
21	2615-159	1	EA	Bolt Hex Head 5/16-18 x 3"
23	2616-157	5	EA	Screw Flat Head 10-16 x 2"
25	2620-328	1	EA	Nut Center Lock 5/16-18

PROPRIETARY AND CONFIDENTIAL
 THE INFORMATION CONTAINED IN THIS DRAWING IS THE
 SOLE PROPERTY OF Door King.
 ANY REPRODUCTION IN PART OR AS A WHOLE WITHOUT
 THE WRITTEN PERMISSION OF Door King IS PROHIBITED.



**IPB-Plastic Elbow Assembly
 Model 1601-049**

SIZE A	DWG 1601-849	REV C
SCALE: 1:1	SHEET 1 of 1	