

LED TRAFFIC LIGHT AND MOUNTING KIT

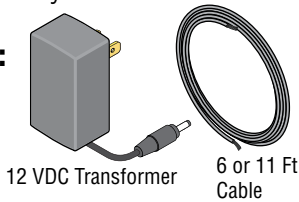
1603-221
6 Ft Cable/No Post

1603-222
6 Ft Cable/35" Post

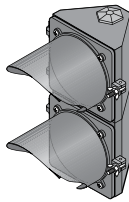
1603-223
11 Ft Cable/95" Post

These kits are designed for the 1600 model barrier gate operators. Recommended for the 1603 auto spike system. The traffic signal is synchronized with the gate operator's up/down cycle. The red LED light stays on and only changes to the green LED when the operator's arm is fully raised.

Kits Include:



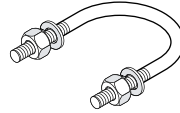
12 VDC Transformer
6 or 11 Ft Cable



Traffic Light Assembly

Support Post Hardware:

Kit P/Ns 1603-222 & 1603-223



U-Bolt Clamp with lockwashers and nuts (2 sets)



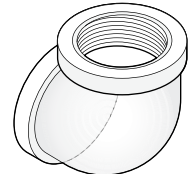
3/4" Conduit Nipple and Conduit Nut



5/8" Cover Bracket bolt and lockwasher (2 sets)



2" Conduit Nut (3)



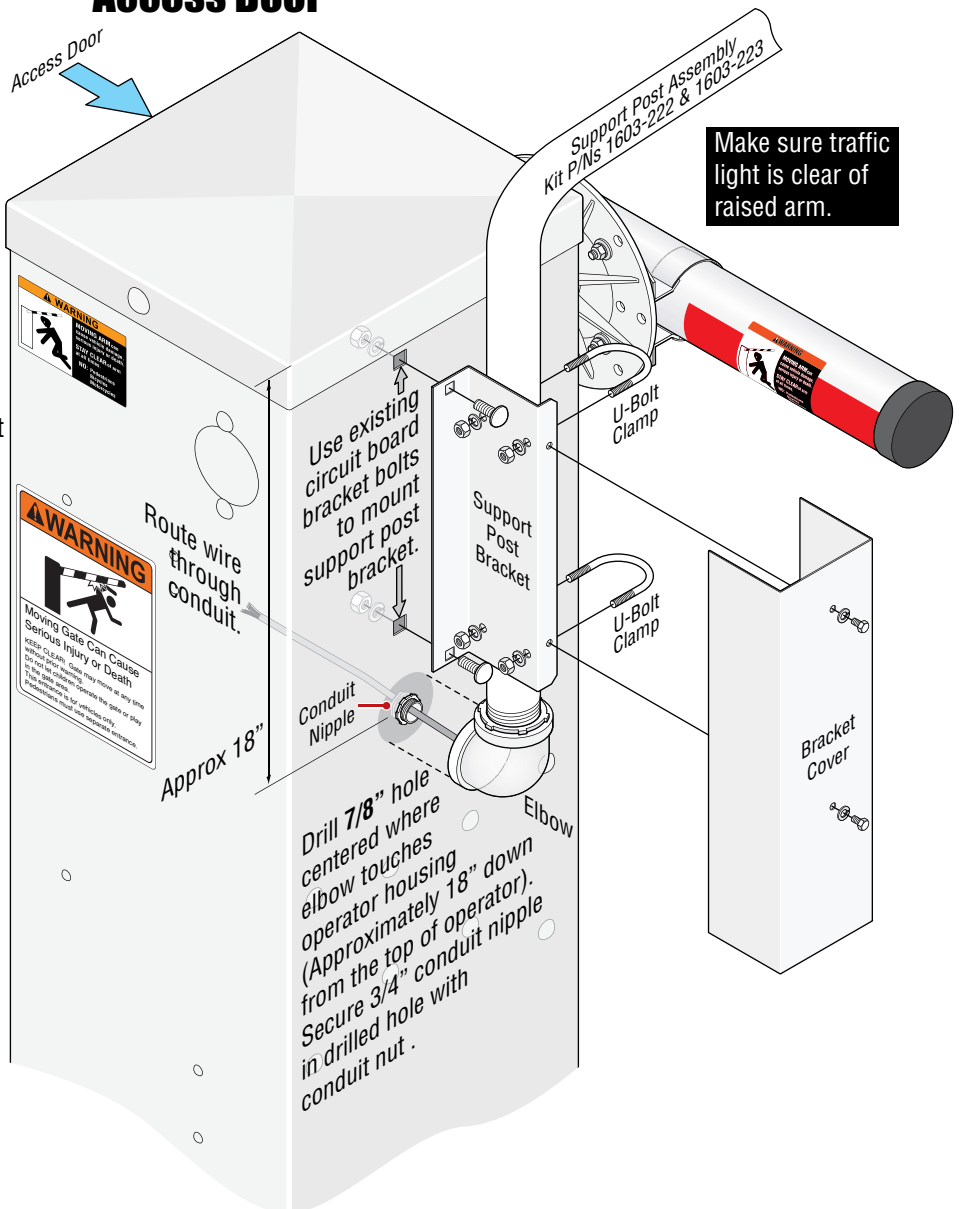
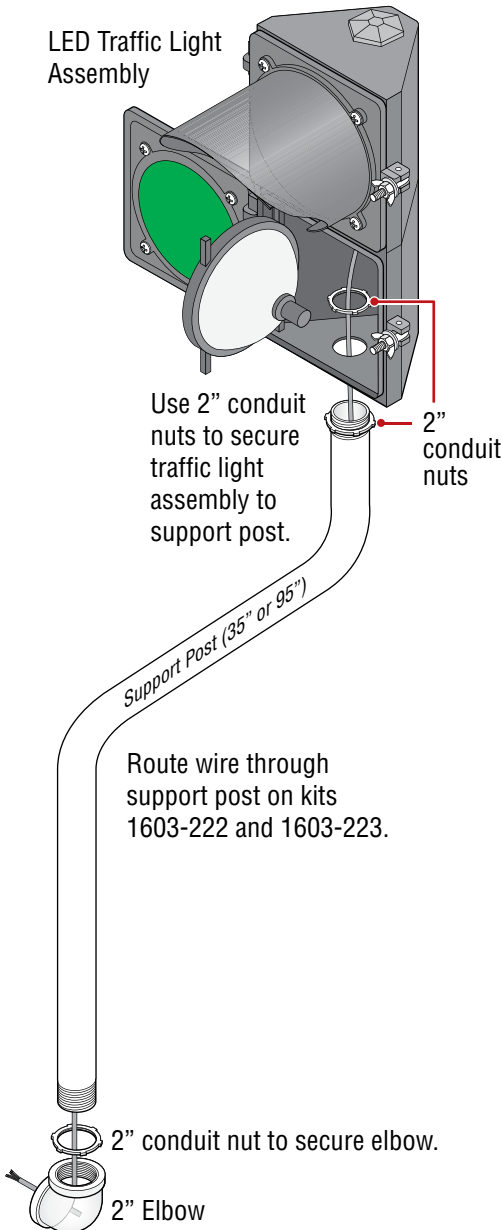
2" Threaded Elbow

Installation

⚠ Shut off AC power to operator.
Turn off DC power switch on certain models.

1 Assemble Support Post

2 Mount Support Post on OPPOSITE Side of Access Door



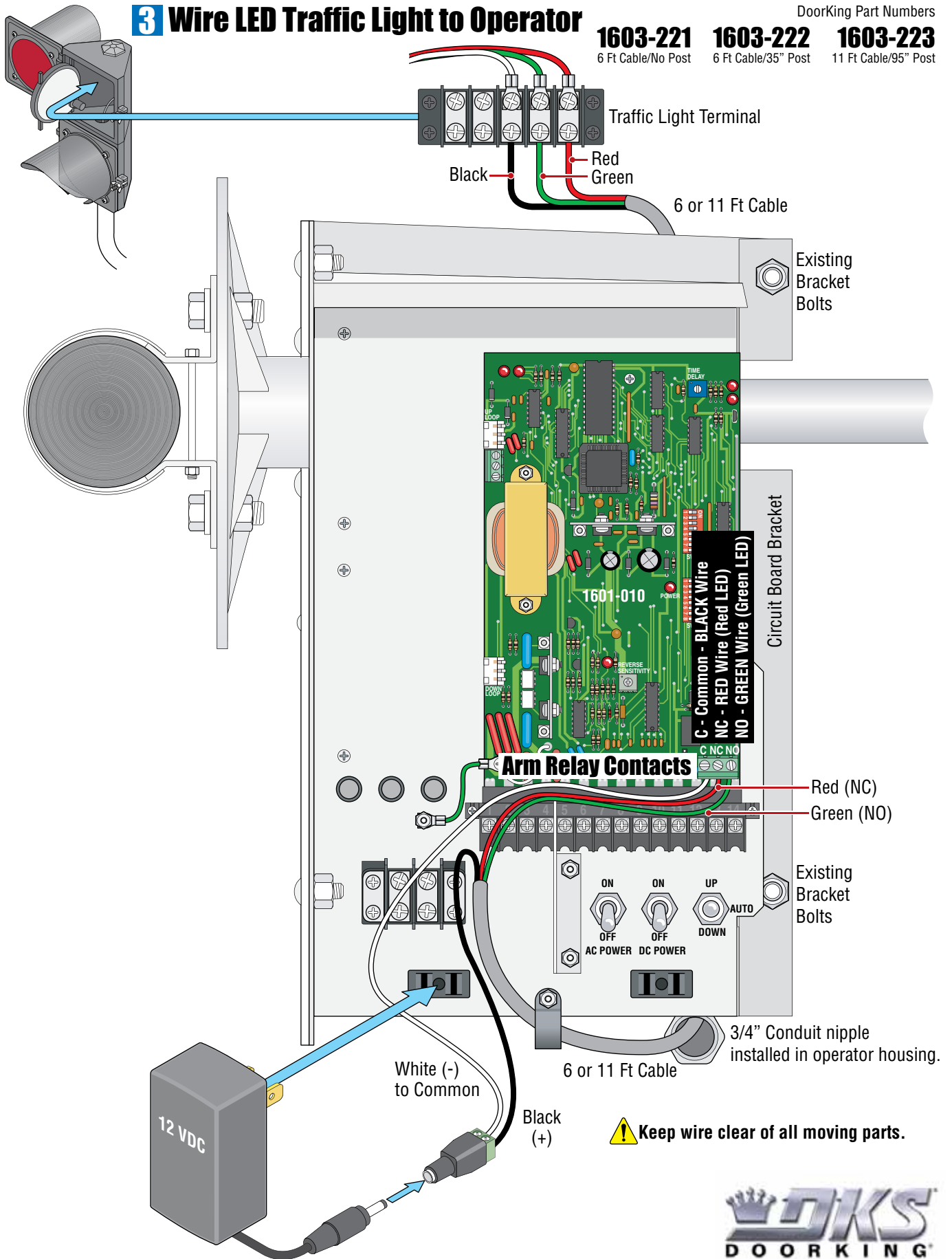
3 Wire LED Traffic Light to Operator

DoorKing Part Numbers

1603-221
6 Ft Cable/No Post

1603-222
6 Ft Cable/35" Post

1603-223
11 Ft Cable/95" Post



⚠ Keep wire clear of all moving parts.

