

3-PIECE OCTAGON ARM WITH LED/REVERSE EDGE KIT INSTALL

These LED/Reverse Edge kits are designed **ONLY** for the 1602 model barrier gate operator.

IMPORTANT NOTE: Installation of arms without LED/Reverse Edge kit see pages 7-9.

DoorKing Part Numbers:

1602-282

20 ft Arm Only

AND

1602-292

20 ft LED/Reverse Edge Kit
(Optional for 1602-282 Arm)

1602-284

24 ft Arm Only

AND

1602-294

24 ft LED/Reverse Edge Kit
(Optional for 1602-284 Arm)

1602-287

27 ft Arm Only

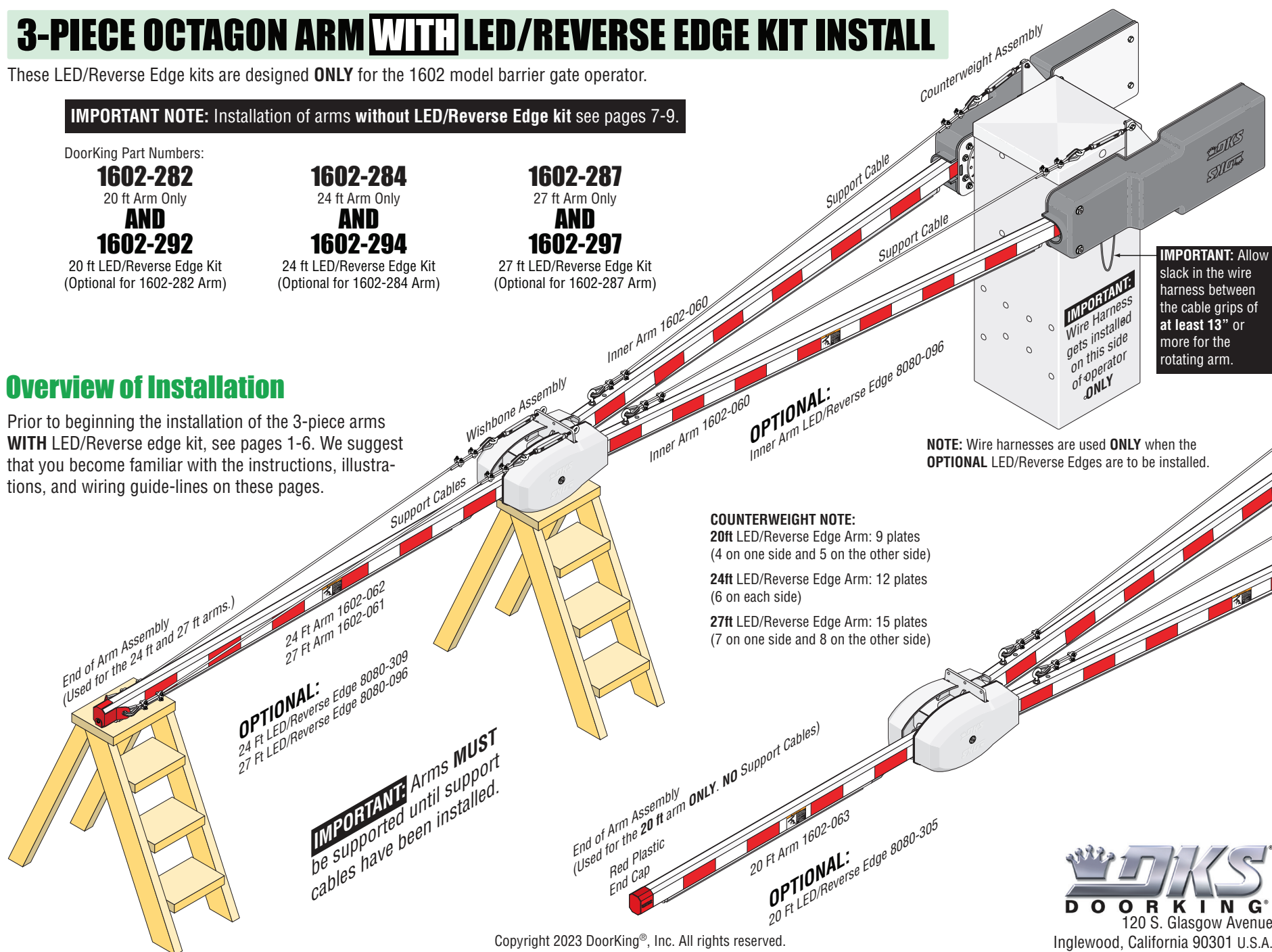
AND

1602-297

27 ft LED/Reverse Edge Kit
(Optional for 1602-287 Arm)

Overview of Installation

Prior to beginning the installation of the 3-piece arms **WITH** LED/Reverse edge kit, see pages 1-6. We suggest that you become familiar with the instructions, illustrations, and wiring guide-lines on these pages.






Copyright 2023 DoorKing®, Inc. All rights reserved.

Mount hubs on operator **FIRST** Test hubs
UP and **DOWN** positions **BEFORE** installing
counterweight mounting plates, then
assemble arms, cables and wire harness on
LED/Reverse Edge models.

Mount hubs on operator **FIRST** Test hubs
UP and **DOWN** positions **BEFORE** installing
counterweight mounting plates, then
assemble arms, cables and wire harness on
LED/Reverse Edge models.

Additional Counterweight Mounting Plates **MUST** be added to **EACH** side of counterweights when using the **Reverse Edge kit**. (number varies, see page 1)

**Counterweight
Mounting Plate
Hardware x 4**

Hex Nut 3/8" 
Lockwasher 3/8" 
Washer 3/8" 

Hex Bolt 1/2" x 1"-3/4" Tap
Locking Plate Washer
Phillips Screw 10-32

Washer 3/8" Hex Bolt 3/8" x 1"
Counterweight Mounting Plate
Hardware x 4
Counterweight
MUST be

Additional Counterweight,
Mounting Plates **MUST** be
added to **EACH** side of
counterweights when
using the **Reverse Edge kit**.
(number varies,
see page 1)

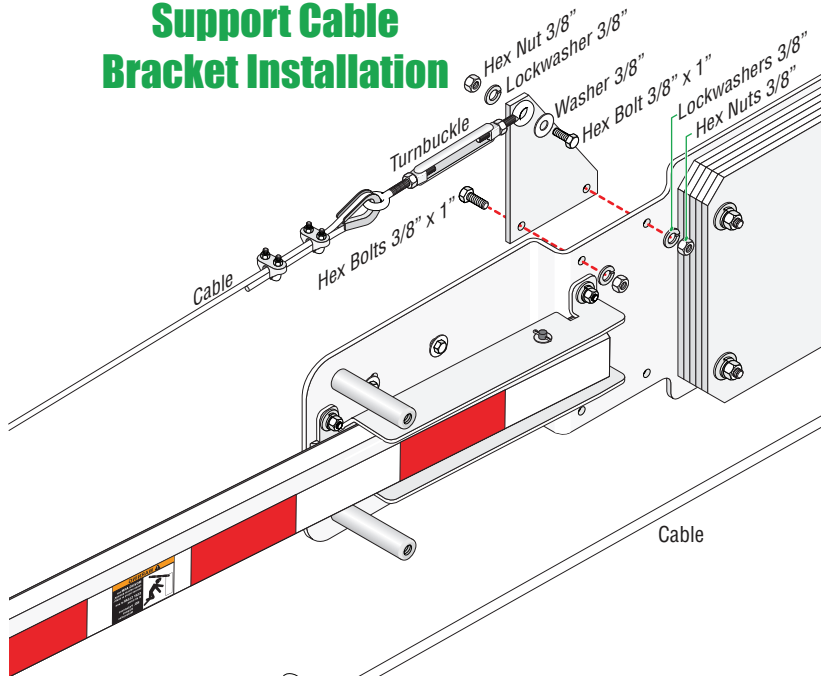
LED/Reverse Edge Arms ONLY Note:
See page 6 for wiring.

Support arms during assembly until all cables have been installed and adjusted for level.

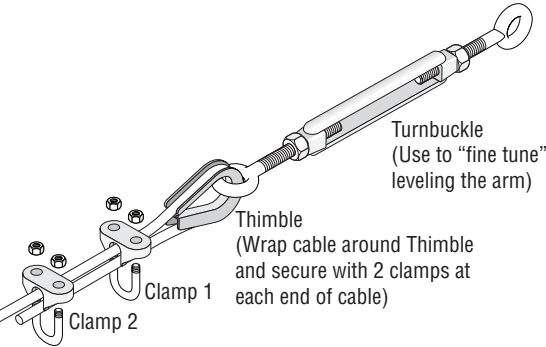
Test hub **UP** and **DOWN** position before installing arms.

1602-158-C-10-23

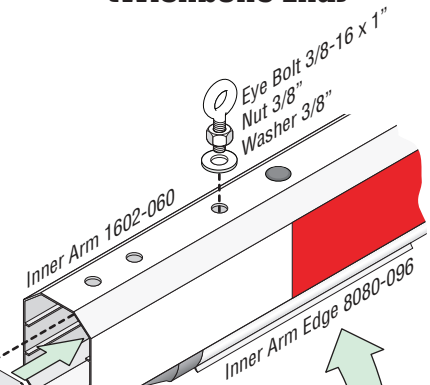
Support Cable Bracket Installation



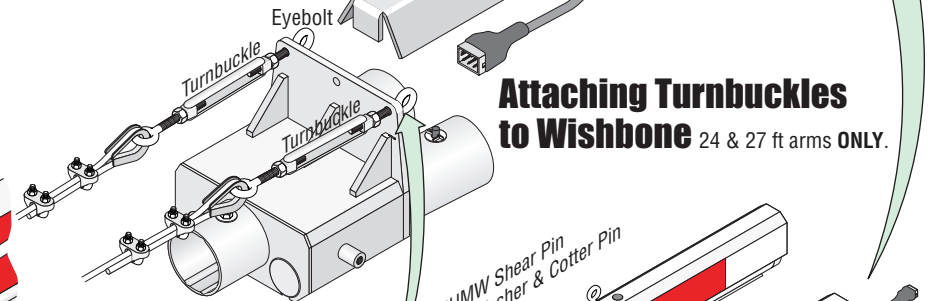
Typical Support Cable Installation



Inner Arms Assembly (Wishbone End)

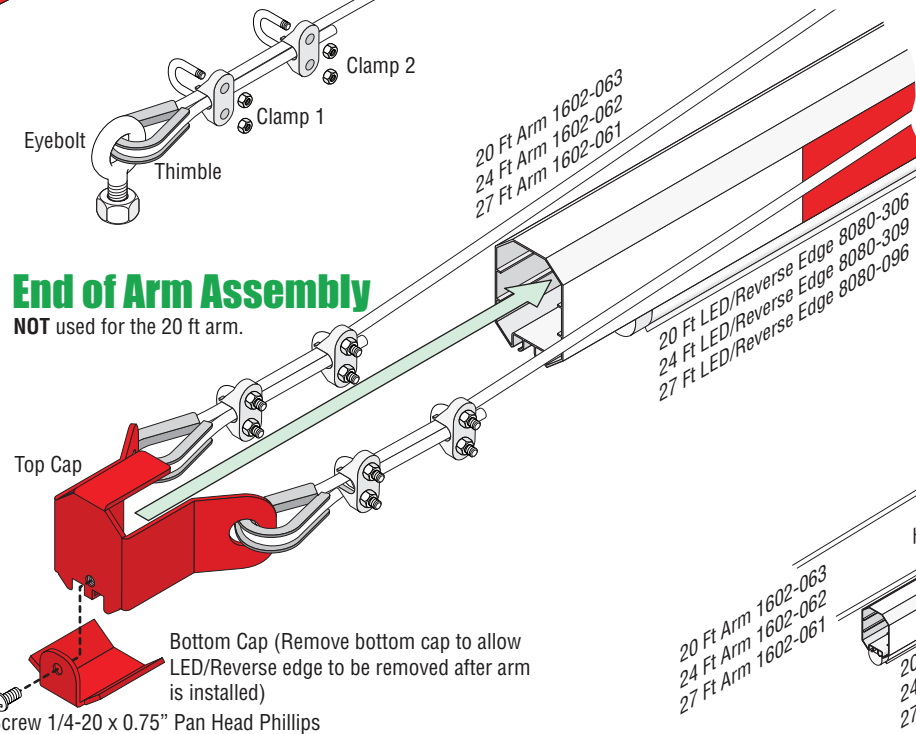


Attaching Turnbuckles to Wishbone 24 & 27 ft arms ONLY.



End of Arm Assembly

NOT used for the 20 ft arm.

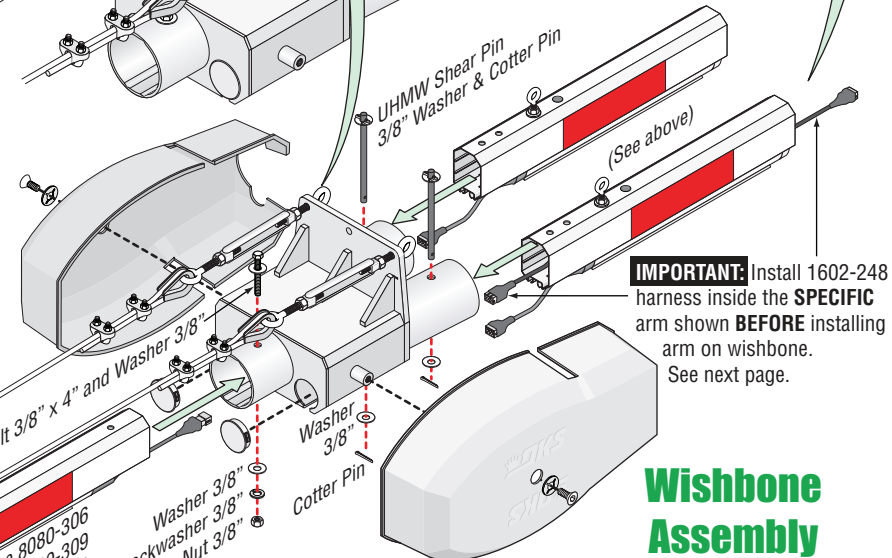


1602-158-C-10-23

20 Ft Arm 1602-063
24 Ft Arm 1602-062
27 Ft Arm 1602-061

20 Ft LED/Reverse Edge 8080-306
24 Ft LED/Reverse Edge 8080-309
27 Ft LED/Reverse Edge 8080-096

20 Ft Edge 8080-306
24 Ft Edge 8080-309
27 Ft Edge 8080-096

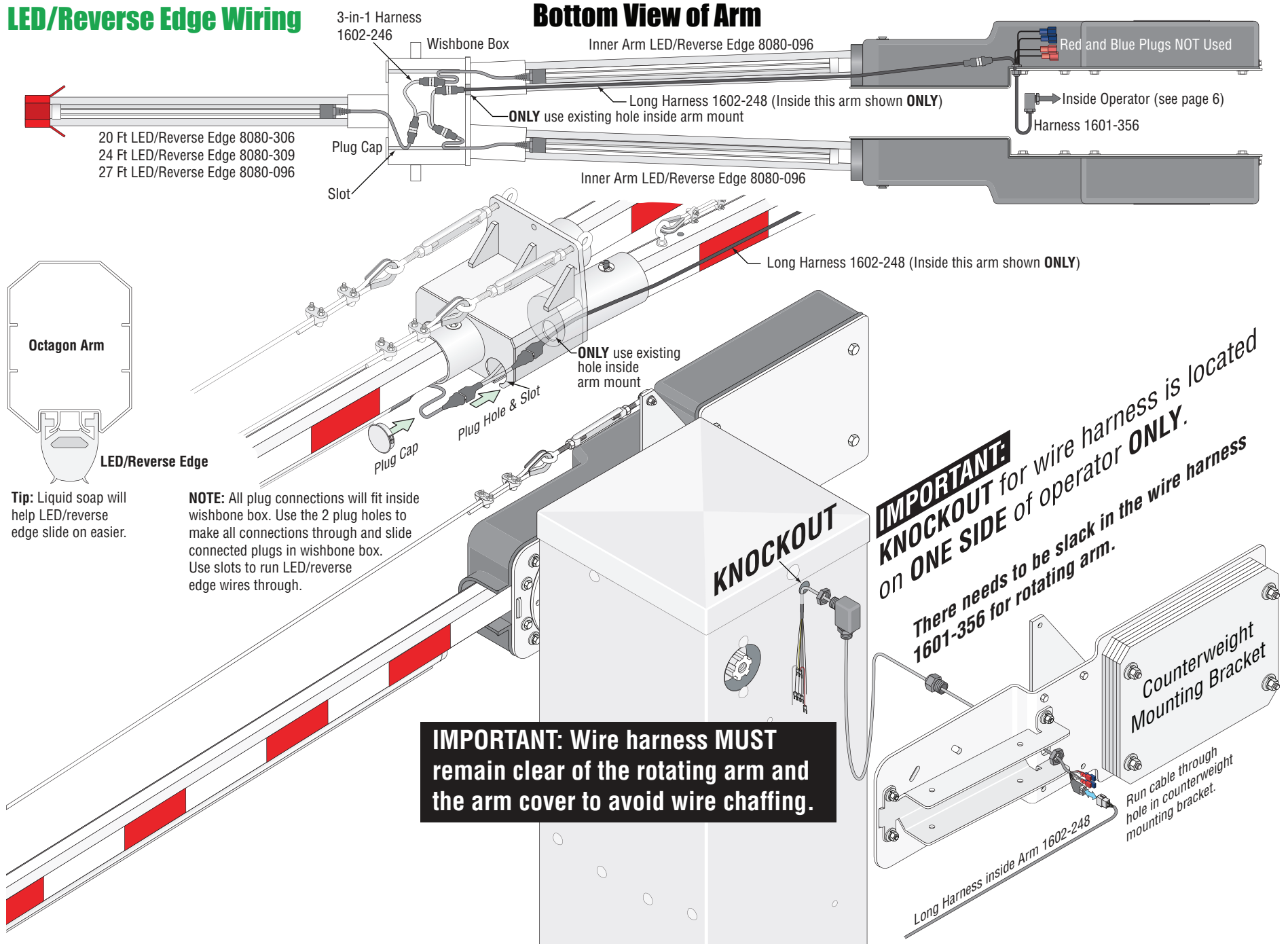


IMPORTANT: Install 1602-248 harness inside the **SPECIFIC** arm shown **BEFORE** installing arm on wishbone. See next page.

Wishbone Assembly

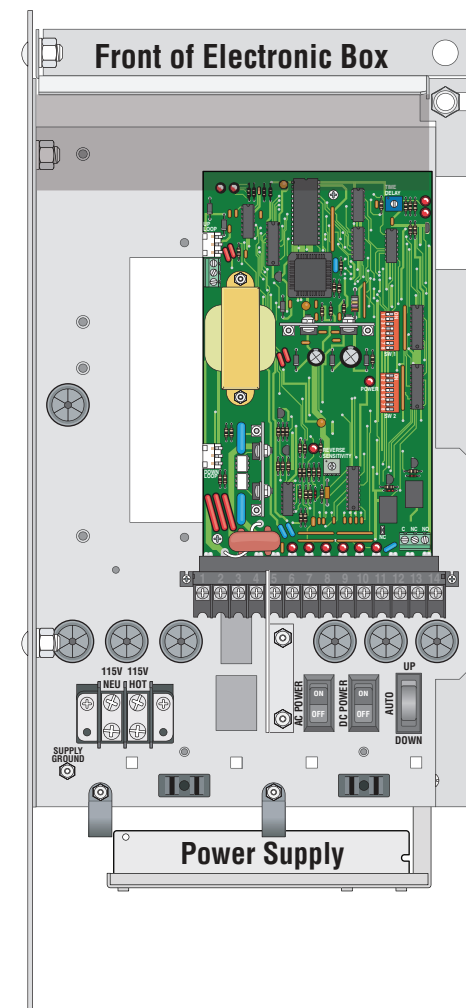
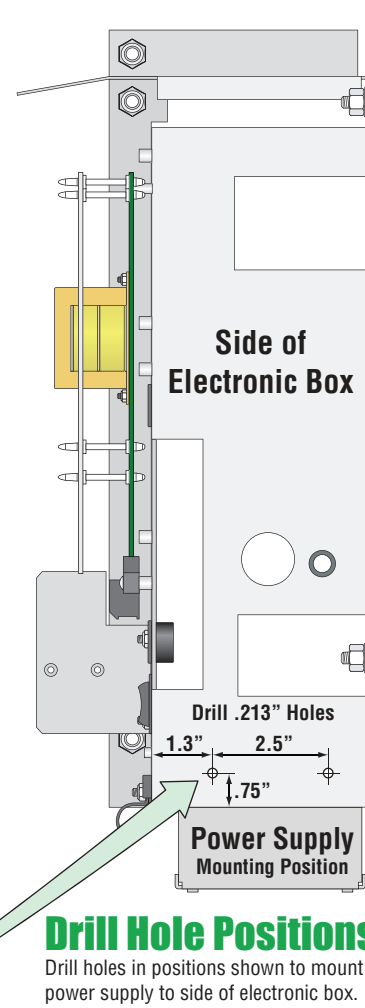
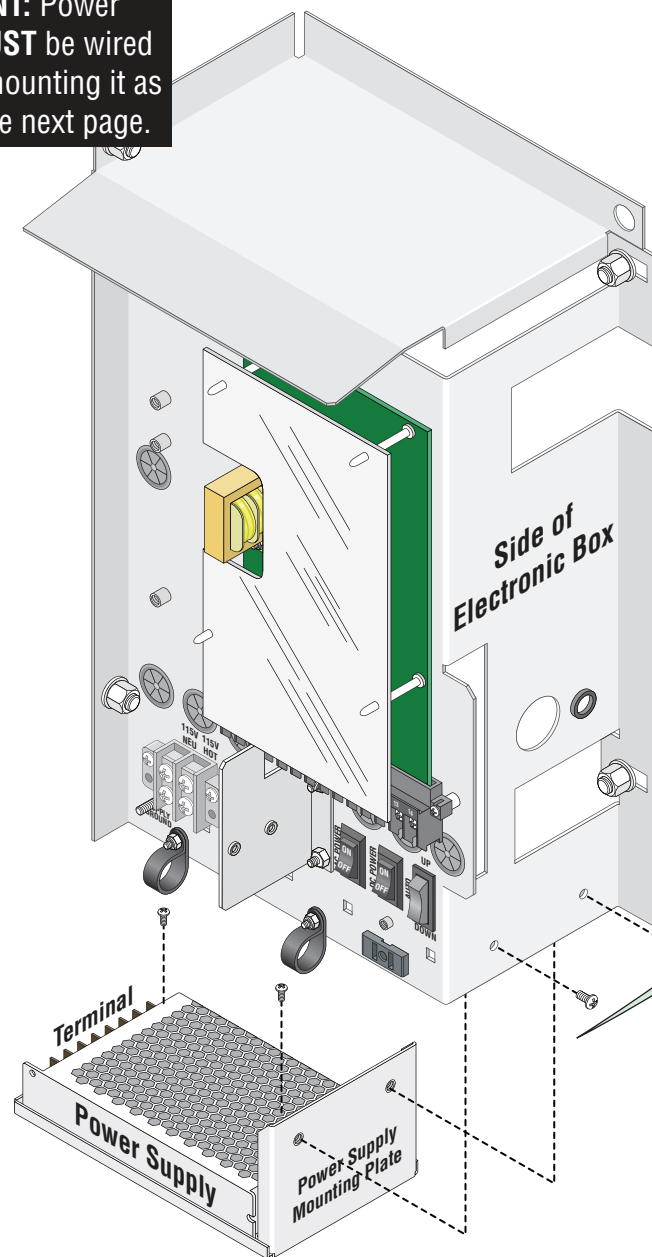
IMPORTANT: Reverse/LED Edges **MUST** be slid in place on arms **BEFORE** installing arms on wishbone. See next page.

LED/Reverse Edge Wiring

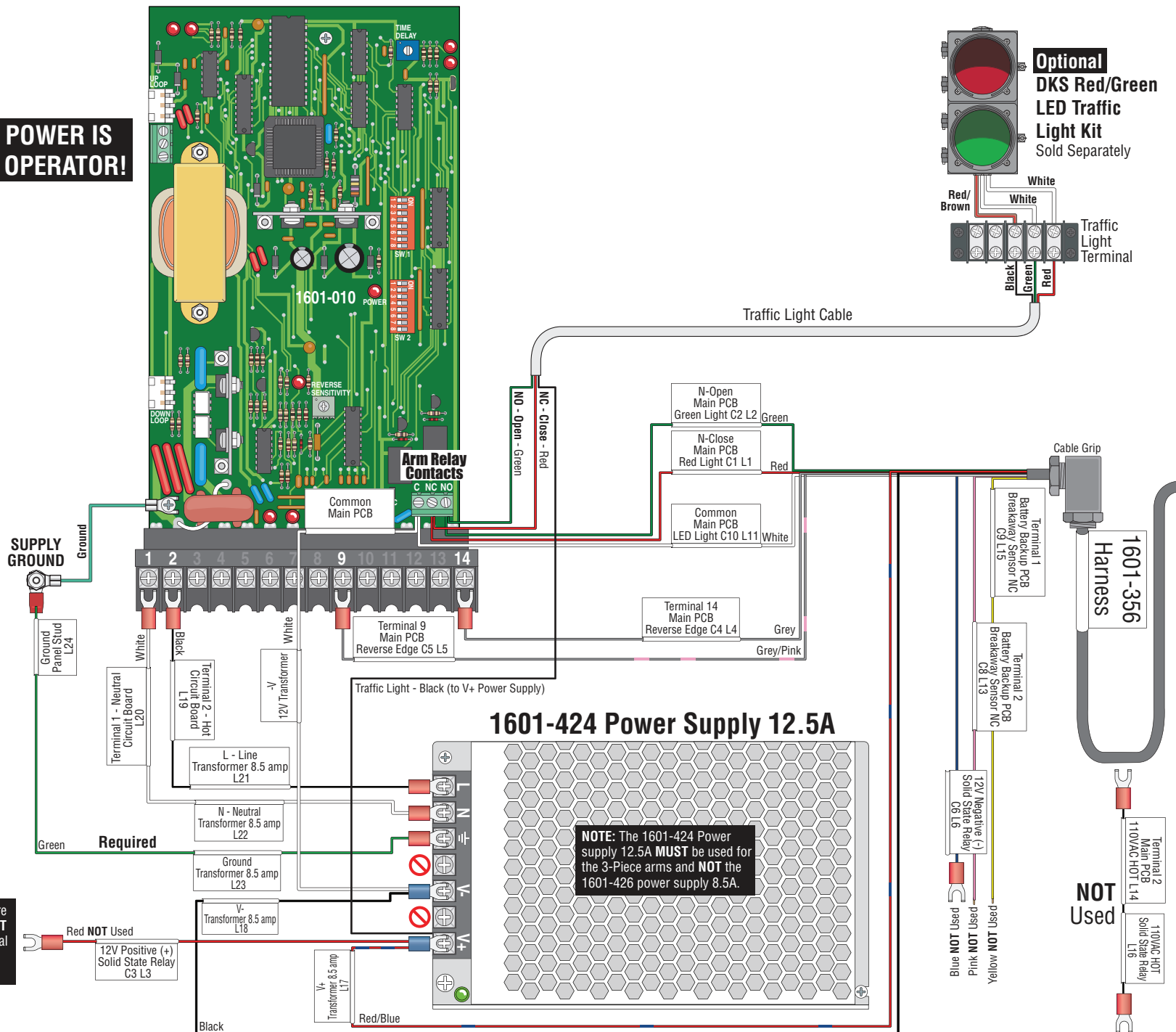


Mount Power Supply

IMPORTANT: Power supply **MUST** be wired **BEFORE** mounting it as shown. See next page.



**MAKE SURE ALL POWER IS
TURNED OFF TO OPERATOR!**



3-PIECE OCTAGON ARM ONLY INSTALL

These 3-Piece Arm ONLY are designed **ONLY** for the 1602 model barrier gate operator.

IMPORTANT NOTE: Installation of arms WITH LED/Reverse Edge kit see pages 1-6.

DoorKing Part Numbers:

1602-282

20 ft Arm Only

1602-284

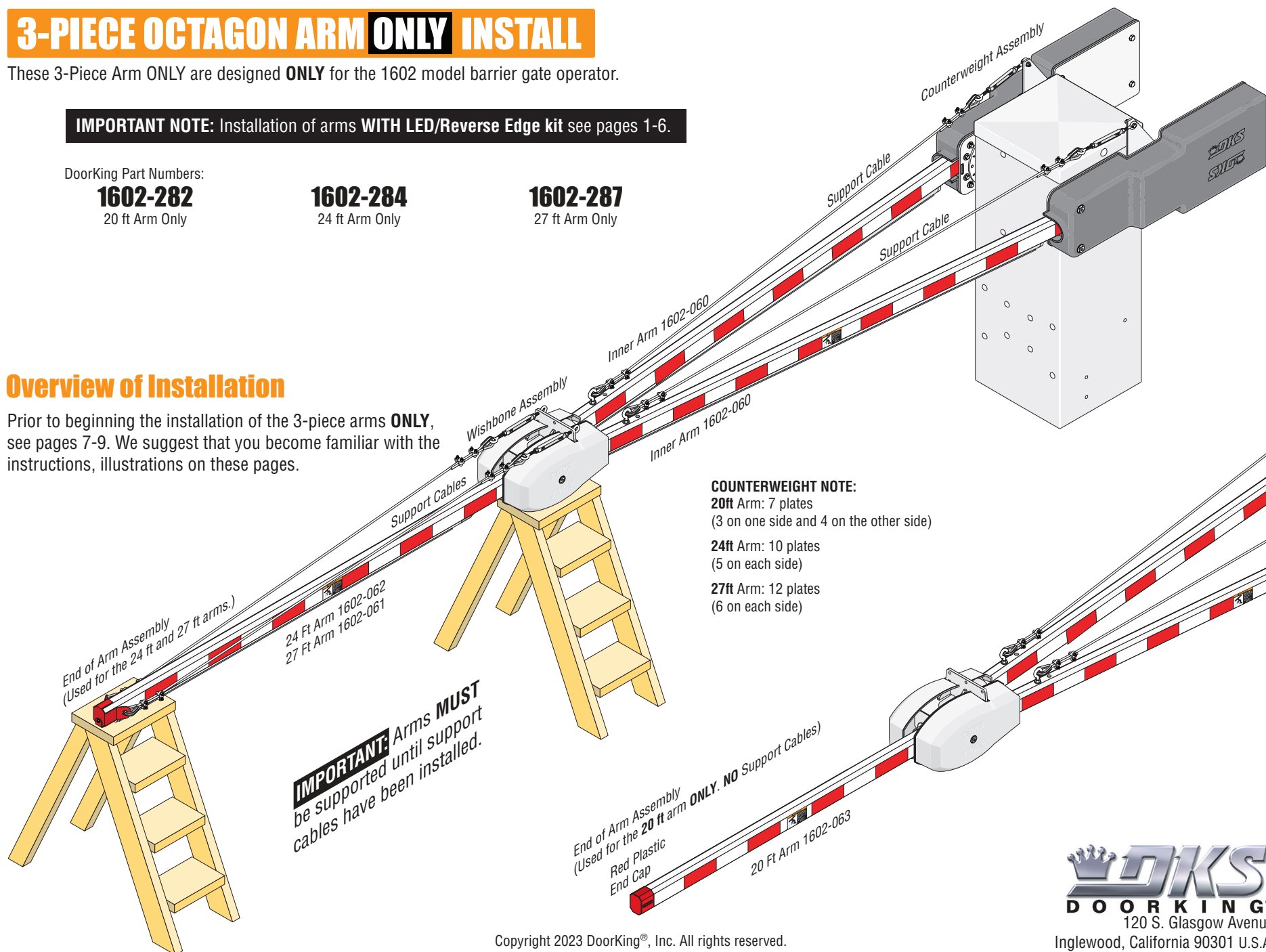
24 ft Arm Only

1602-287

27 ft Arm Only

Overview of Installation

Prior to beginning the installation of the 3-piece arms **ONLY**, see pages 7-9. We suggest that you become familiar with the instructions, illustrations on these pages.



COUNTERWEIGHT NOTE:

20ft Arm: 7 plates
(3 on one side and 4 on the other side)

24ft Arm: 10 plates
(5 on each side)

27ft Arm: 12 plates
(6 on each side)

IMPORTANT: Arms **MUST**
be supported until support
cables have been installed.

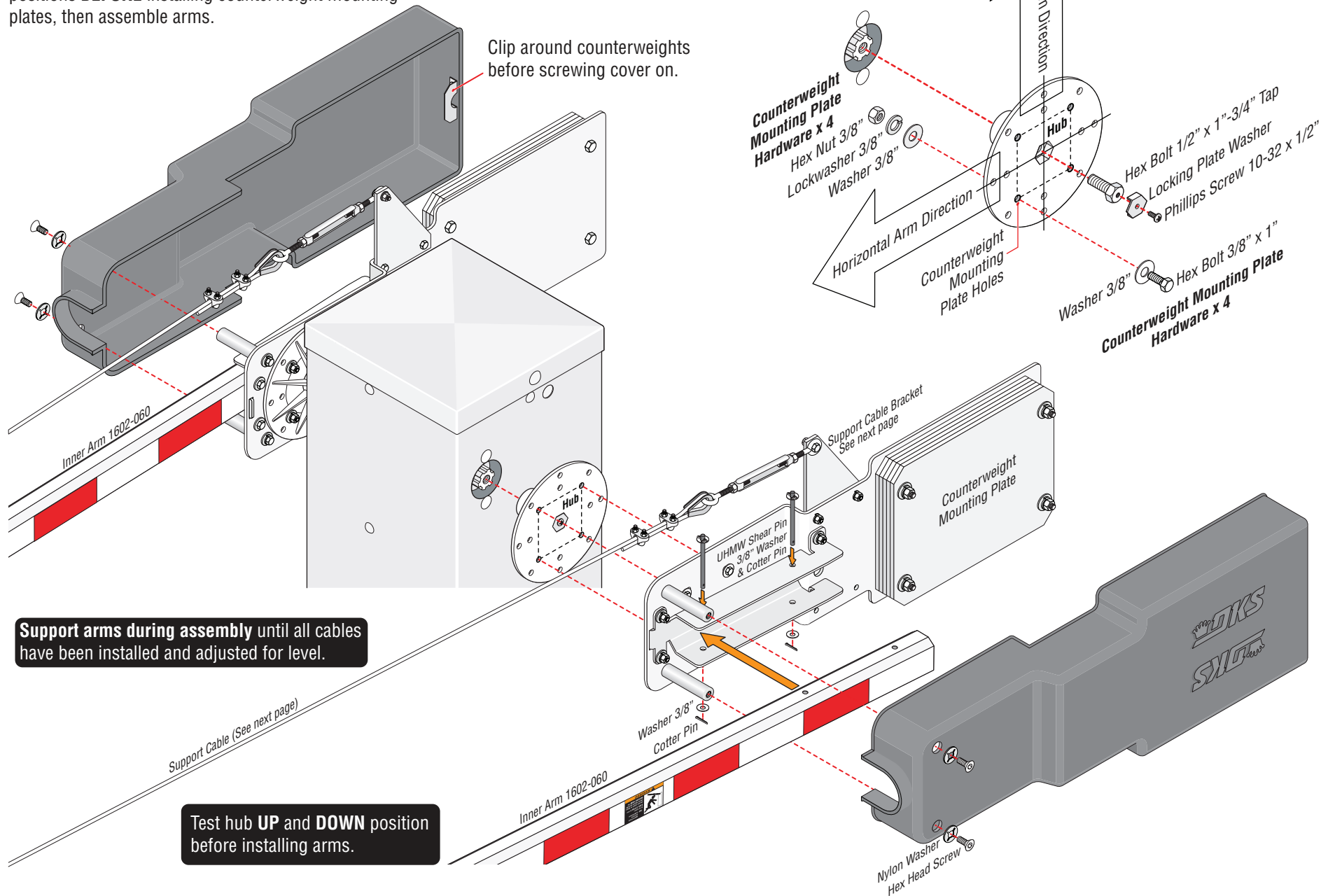
End of Arm Assembly
(Used for the 20 ft arm **ONLY**. NO Support Cables)
Red Plastic
End Cap
20 Ft Arm 1602-063

Copyright 2023 DoorKing®, Inc. All rights reserved.

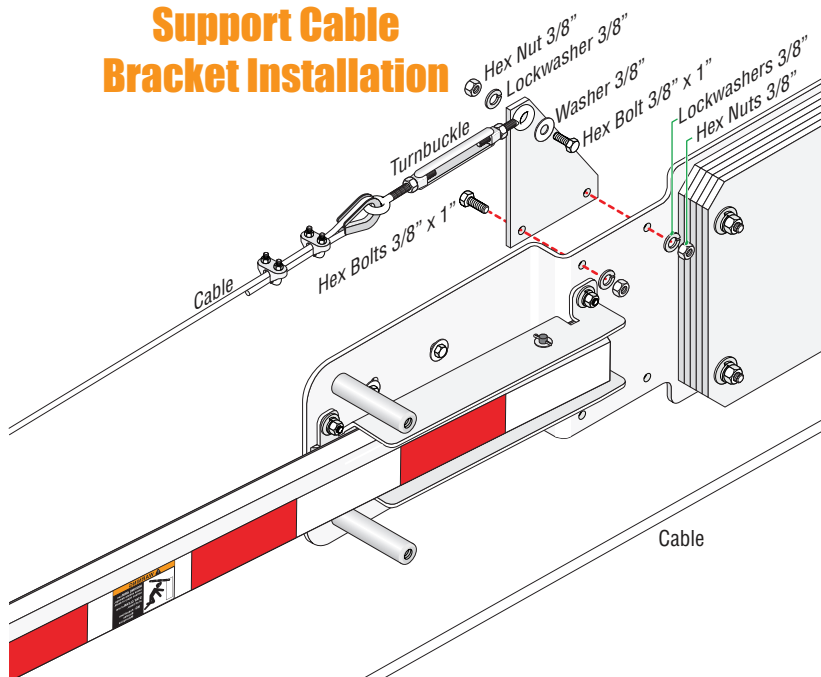
DOOR KING®
120 S. Glasgow Avenue
Inglewood, California 90301 U.S.A.

Counterweight Assembly

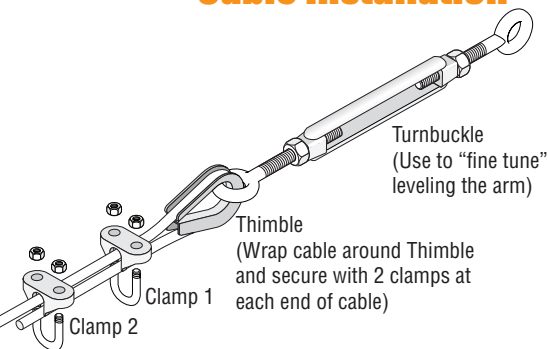
Mount hubs on operator **FIRST** Test hubs **UP** and **DOWN** positions **BEFORE** installing counterweight mounting plates, then assemble arms.



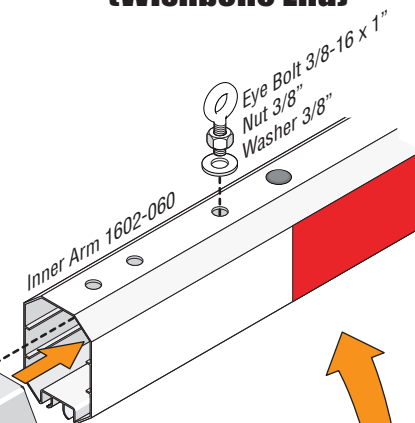
Support Cable Bracket Installation



Typical Support Cable Installation

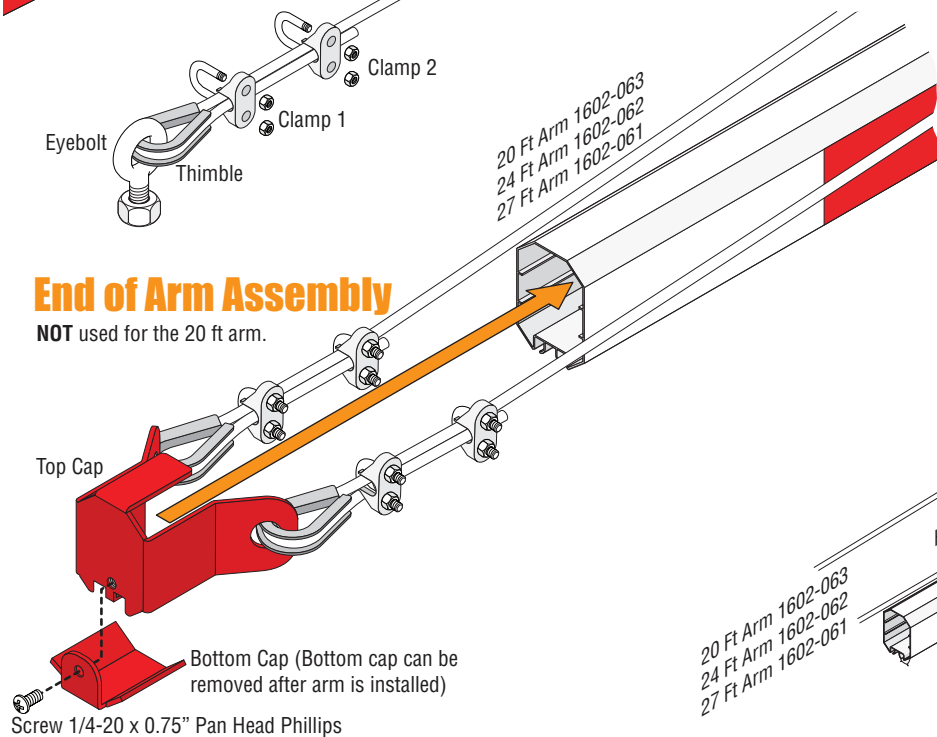


Inner Arms Assembly (Wishbone End)

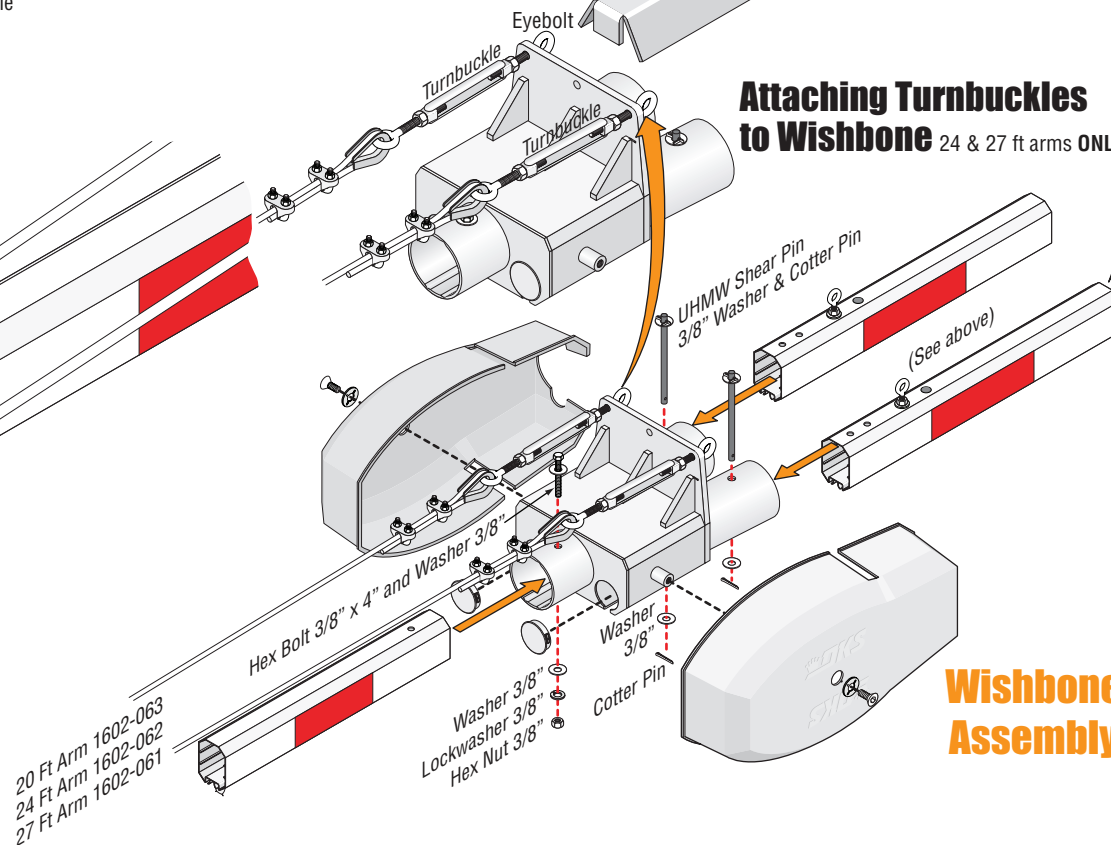


End of Arm Assembly

NOT used for the 20 ft arm.



Attaching Turnbuckles to Wishbone 24 & 27 ft arms ONLY.



Wishbone Assembly