

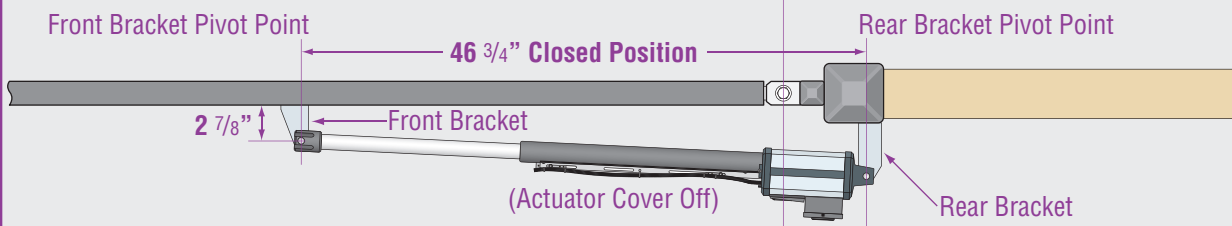
QUICKSTART "BASIC" GUIDELINES FOR MODEL 6002 - FOR A GATE UP TO 14 FEET, 500LBS AND "OPENING TO THE INSIDE"



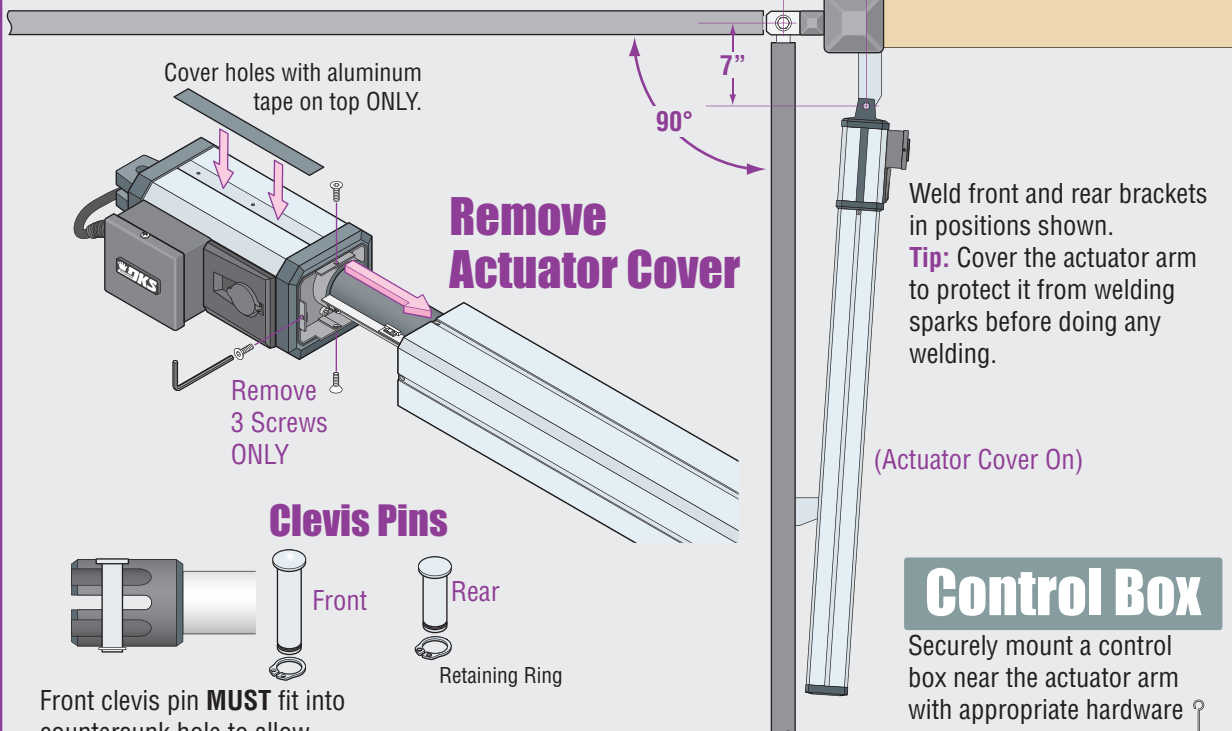
120 S. Glasgow Avenue
Inglewood, California 90301
U.S.A.

Installation

Arm in Closed Position



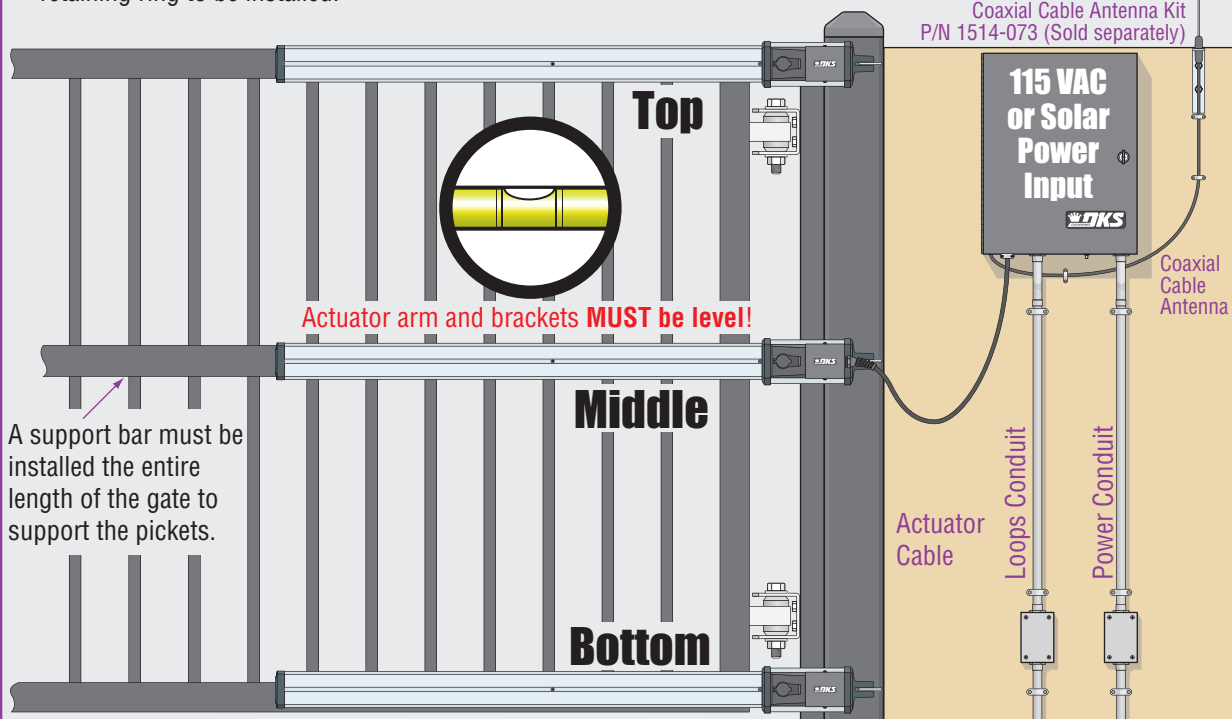
Arm in "Open to the Inside" Position



Control Box

Securely mount a control box near the actuator arm with appropriate hardware (not included).

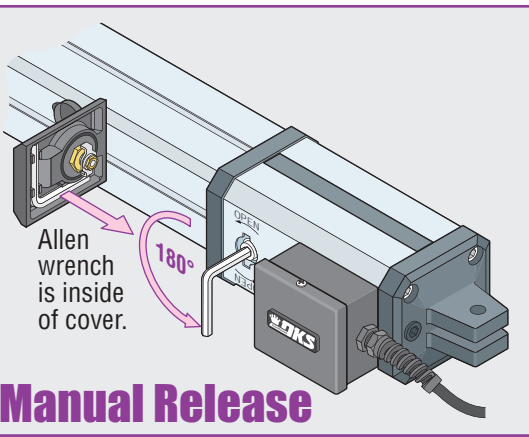
Coaxial Cable Antenna Kit
P/N 1514-073 (Sold separately)



THIS PRODUCT IS TO BE INSTALLED AND SERVICED BY A TRAINED GATE SYSTEMS TECHNICIAN ONLY. Visit www.dkslocator.com to find a professional installing and servicing dealer in your area.

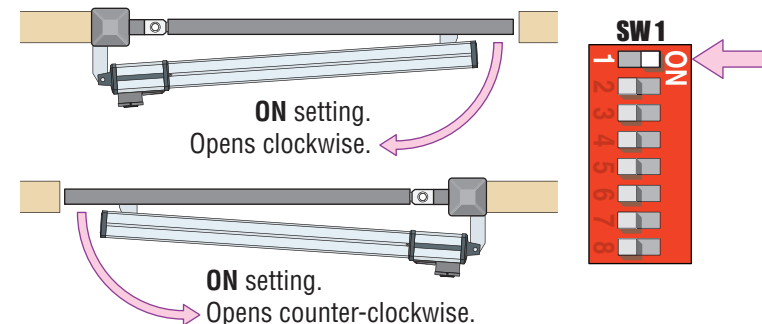
The 6002 is intended for installation only on swing gates used for vehicles.

Pedestrians must be supplied with a separate access opening. For safety and installation instructions, please refer to 6002 Actuator Arm and Control Box Mounting manual, 115 VAC or Solar Control Box Wiring/Owner's manuals.

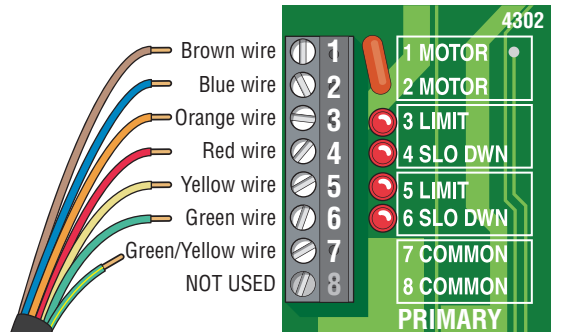


Opening Direction DIP-Switch 1 (SW 1)

Refer to YOUR chosen 115 VAC OR Solar powered control box manuals for complete DIP-switch settings.



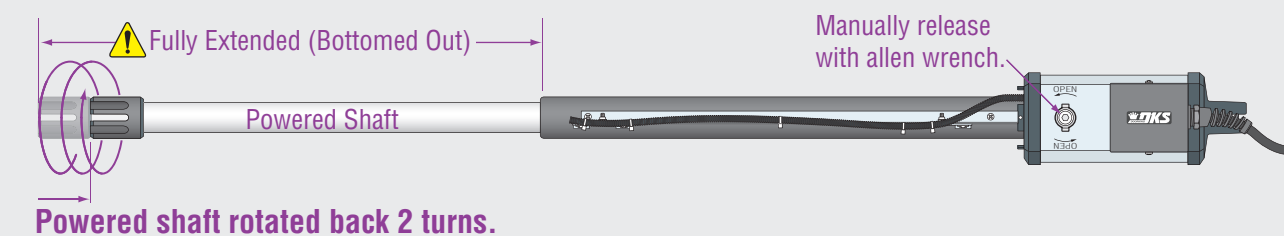
Wiring to Circuit Board



Single operator connects to PRIMARY connection ONLY on the 115 VAC OR Solar control box circuit board.

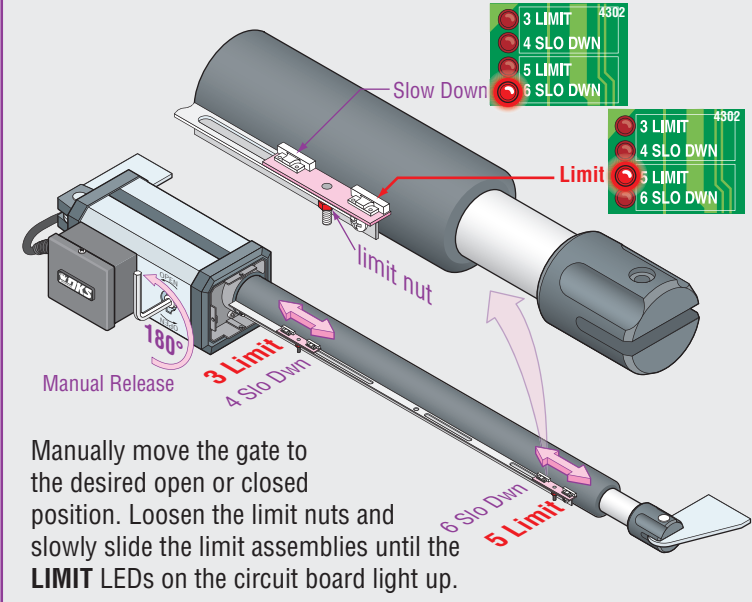
Prevent Powered Shaft from Bottoming Out

Manually release the arm and fully extend the powered shaft. Rotate it back two full turns before installing the arm.



Limit Sensors Adjustment

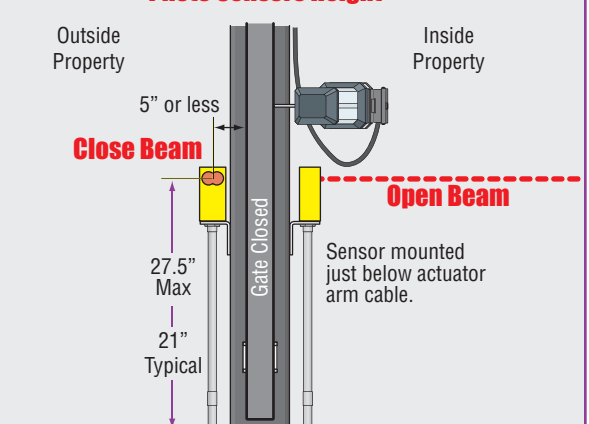
Circuit board power MUST be ON to adjust limit sensors, LEDs will light.



Manually move the gate to the desired open or closed position. Loosen the limit nuts and slowly slide the limit assemblies until the LIMIT LEDs on the circuit board light up.

DO NOT cycle operator before limit sensors and DIP-switches have been adjusted, damage could occur to gate and operator.

Photo Sensors Height



Note: Refer to YOUR chosen 115 VAC OR Solar powered control box manuals to wire entrapment protection devices.

