



6002 **VEHICULAR**

SWING GATE 24 Volt DC ACTUATOR



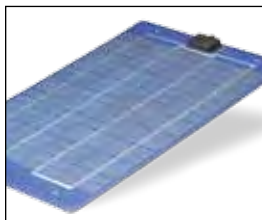
reliability
in a compact and simple to install design



smooth operation
no slamming when gate closes



fully enclosed
screw drive for added safety



solar powered
options available



115 VAC Deluxe Control Box



115 VAC Standard Control Box



Solar Control Box Basic



Solar Control Box Single Gate



Solar Control Box Dual Gates

- Mounts directly on gate and gate-post – simplifying installation and eliminating the need for concrete pads
- The powerful screw drive connects directly to the gate eliminating weak mechanical connections
- Actuators are designed for gates up to 14-feet wide and are ideal for farms, ranches, and residential applications
- Built in limit switches precisely control the start/stop speed, and travel of the gate
- Fully enclosed screw
- Actuator operates on 24 VDC power with built-in battery backup
- Plug-in loop detectors simplify wiring and make installation easy
- Bi-parting gate system controlled from single board
- 115 VAC or 24 VDC Solar powered control box options
- 0.0 A SBPD Circuit (Pat Pend)

FEATURES

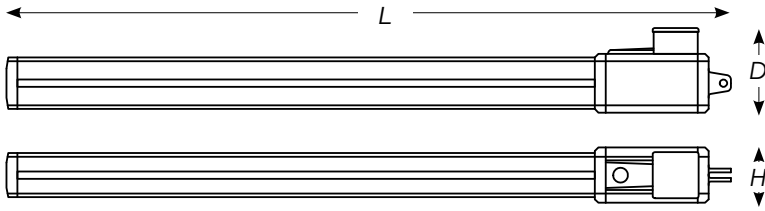
ACCESS CONTROL SOLUTIONS





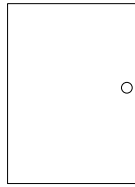
6002 VEHICULAR SWING GATE ACTUATOR

The Model 6002 swing gate actuator offers convenience and reliability in a compact design. It mounts directly on your gate and pilaster, simplifying installation and eliminating the need for concrete pads. The powerful screw driven piston connects directly to the gate eliminating weak mechanical connections and it is fully enclosed to prevent dirt and other airborne corrosives from contaminating the screw threads. And there is no need to worry about hydraulic leaks, check valves or pumps.

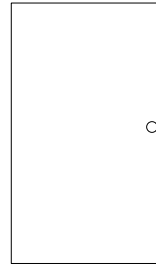


6002 Actuator

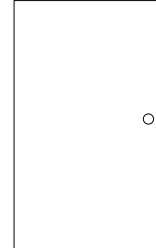
49.25" L x 3.75" H x 5.75" D
1251mm W x 95.3mm H x 146mm D



Standard Control Box
12.5" W x 16.5" H x 4.25" D
(318mm W x 419mm H x 108mm D)



Deluxe Control Box
14.5" W x 24" H x 4.25" D
(368mm W x 610mm H x 108mm D)



Solar Control Box
13" W x 21" H x 8" D
(330mm W x 533mm H x 203mm D)

6002 Specs

Class of operation	Max Gate Length *	Max Gate Weight *
I, II	14 Ft 4.3 m	500 Lbs. 227 kg

*Assumes gate and hardware to be in good condition and swinging in a level plane

Solar Control Box

24 VDC Input and output power

Single gate control box has two (2) 18 Ah batteries

Dual gate control box has two (2) 35 Ah batteries

(Note: dual gate control box can also be used to power a single actuator)

Standard & Deluxe Control Box

120 VAC Input power,

24 VDC Output to actuator

Two (2) 3.5 Ah batteries provided for backup

Solar Panel

24 Volt, 10 Watt panel

One (1) required for control box with 18 Ah batteries
two (2) required for control box with 35 Ah batteries

General Specs

Mechanical

Primary reduction: worm gear 1:27

Speed: 90° in approximately 12 seconds

Case: extruded aluminum

Useable rod stroke: 14.75"

Fully enclosed piston prevents dust, dirt and other airborne corrosives from contaminating the screw threads

Manual Release

Keyed release provided

Fail-secure mechanical

Safety

External obstruction sensing devices must be used with this operator

Safety Standards

Complies with the UL 325 and UL 991 safety standards

ETL listed

DOORKING, INC.

120 Glasgow Avenue, Inglewood, California 90301 U.S.A. Tel: 310-645-0023 FAX: 310-641-1586 www.doorking.com

© 2011 All Rights Reserved. Product specifications may change without notice. Rev. 10/11

Advanced Features

Fully enclosed drive mechanism

Adjustable built in limit switches precisely control the start / stop speed, and travel of gate for smooth operation

Built-in battery charger

Ports for Exit and Reverse plug-in loop detectors

90° in approximately 12 seconds

110° maximum gate opening

Gate overlap feature for dual gate operation

Magnetic lock power circuit

Built-in reset and test buttons

Maximum run timer

Built-in high current warning

0.0 A SBPD Circuit (Pat Pend)

Operating Temp

32°F to 145°F

0°C to 62°C

Shipping Weight

Actuator: Approx 25 Lbs. (11.3 kg)

Std Control Box: Approx 30 Lbs. (13.6 kg)

Deluxe Control Box: Approx 40 Lbs. (18.14 kg)

Solar Control Box Sgl: Approx 60 Lbs (27.22 kg)

Solar Control Box Dual: Approx 90 Lbs (40.82 kg)

Solar Control Box Basic (No Batteries):
Approx 30 Lbs (13.6 kg)

Warranty

2-year limited factory warranty

Distributed by:

MEMBER:

